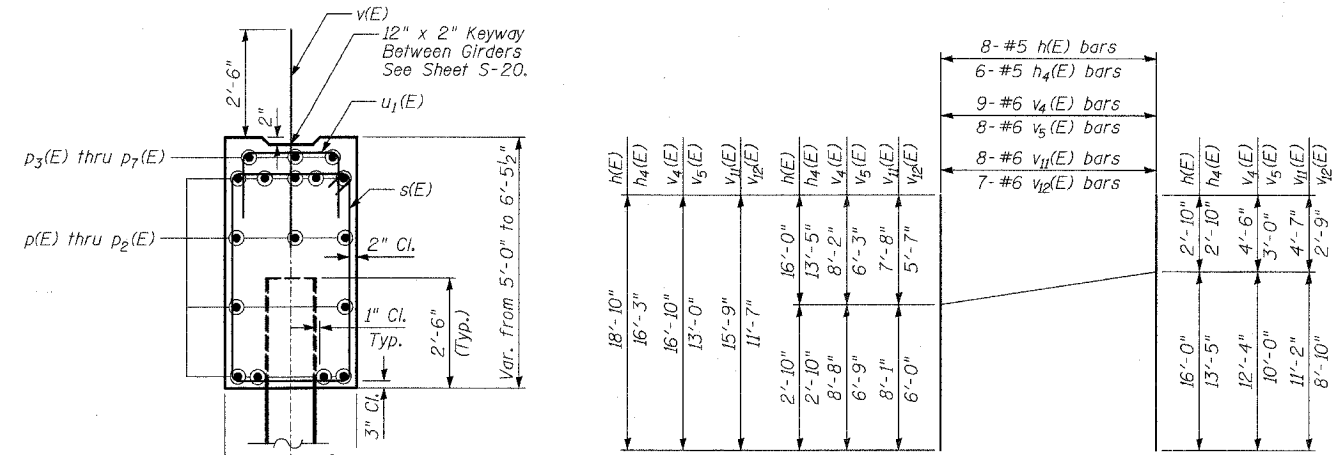


F.A.P. RTE.	SECTION	COUNTY	TOTAL SHEETS	SHEET NO.
335	119R-2	LAKE	439	276
STA. 432+83.12		TO STA. 470+56.84		
FED. ROAD DIST. NO.	ILLINOIS	FED. AID PROJECT		

60B01

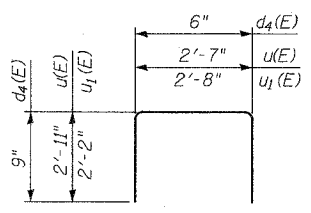
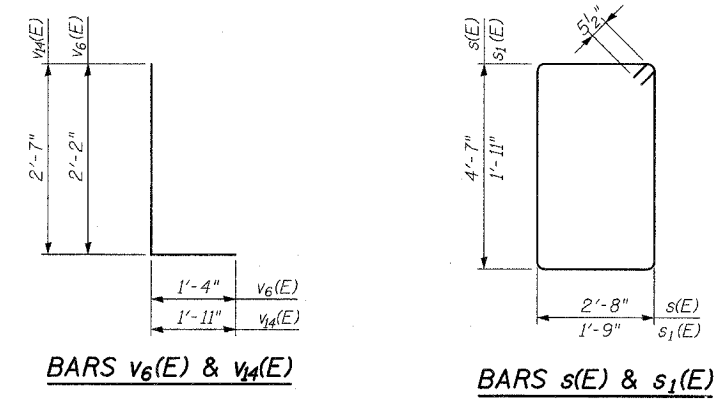
BILL OF MATERIAL

Bar	No.	Size	Length	Shape
d ₄ (E)	12	#5	2'-0"	U
d ₆ (E)	6	#6	7'-2"	U
h(E)	8	#5	18'-10"	—
h ₁ (E)	12	#5	18'-2"	—
h ₂ (E)	12	#5	7'-4"	—
h ₃ (E)	2	#6	17'-3"	—
h ₄ (E)	6	#5	16'-3"	—
h ₅ (E)	12	#5	15'-8"	—
h ₆ (E)	2	#6	14'-6"	—
p(E)	28	#7	31'-9"	—
p ₁ (E)	14	#7	20'-8"	—
p ₂ (E)	28	#7	37'-0"	—
p ₃ (E)	6	#5	23'-8"	—
p ₄ (E)	3	#5	7'-0"	—
p ₅ (E)	3	#5	20'-8"	—
p ₆ (E)	3	#5	20'-0"	—
p ₇ (E)	3	#5	22'-8"	—
s(E)	132	#5	15'-5"	—
s ₁ (E)	19	#5	8'-3"	—
u(E)	4	#5	8'-5"	—
u ₂ (E)	115	#5	7'-0"	—
v(E)	128	#8	5'-0"	—
v ₁ (E)	3	#6	12'-4"	—
v ₂ (E)	3	#6	10'-0"	—
v ₃ (E)	39	#6	5'-3"	—
v ₄ (E)	9	#6	16'-10"	—
v ₅ (E)	8	#6	13'-0"	—
v ₆ (E)	39	#6	3'-6"	—
v ₇ (E)	4	#5	6'-4"	—
v ₈ (E)	8	#5	3'-0"	—
v ₉ (E)	3	#6	11'-2"	—
v ₁₀ (E)	3	#6	8'-10"	—
v ₁₁ (E)	8	#6	15'-9"	—
v ₁₂ (E)	7	#6	11'-7"	—
v ₁₃ (E)	4	#5	5'-10"	—
v ₁₄ (E)	3	#6	4'-6"	—
v ₁₅ (E)	4	#10	4'-0"	—
Porous Granular Embankment, Special			Cu Yd	367
Structure Excavation			Cu Yd	188
Concrete Structures			Cu Yd	112
Reinforcement Bars, Epoxy Coated			Pound	12,290
Furnishing Steel Piles, HP14x73			Foot	1,529
Driving Piles			Foot	1,529
Test Pile Steel HP14x73			Each	1
Pile Shoes			Each	30
Geocomposite Wall Drain			Sq Yd	143
Bar Splicers			Each	14
Permanent Steel Sheet Piling			Sq Ft	264
Concrete Encasement			Cu Yd	16

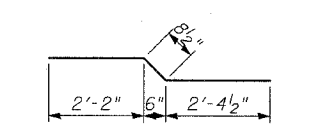


FIELD CUTTING DIAGRAM

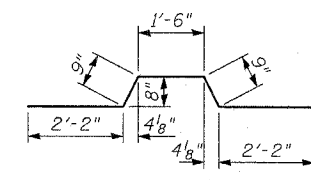
Order all bars full length. Cut h(E) and h₄(E) bars as shown and use remainder of bars in opposite face. Cut v₄(E), v₅(E), v₁₁(E) & v₁₂(E) bars as shown and use remainder of bars in opposite end.



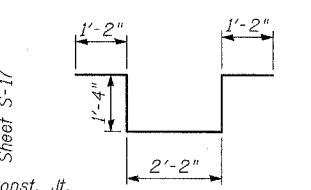
BARS u(E), u₁(E) & d₄(E)



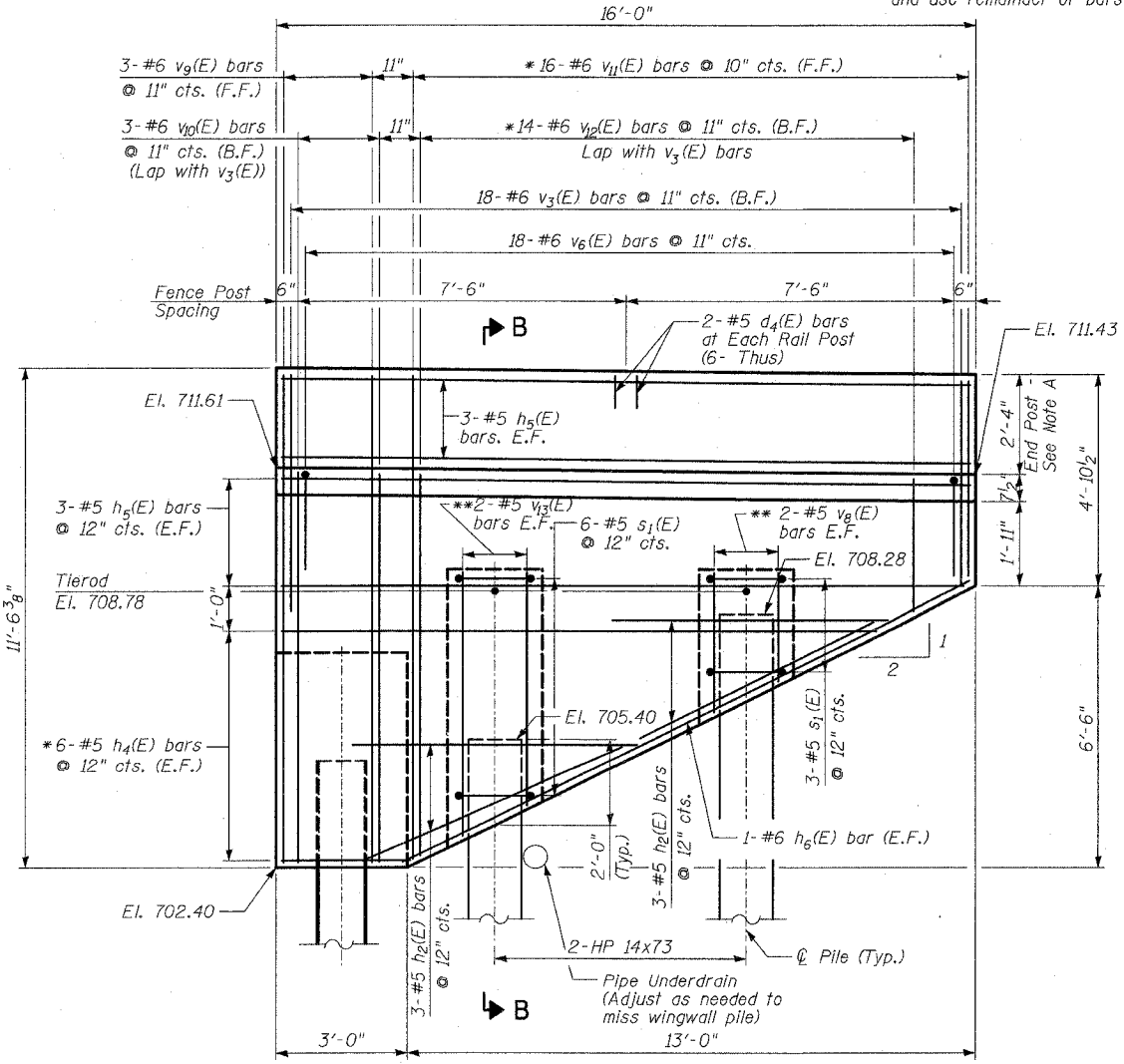
BAR v₃(E)



BAR h₂(E)



BAR d₆(E)

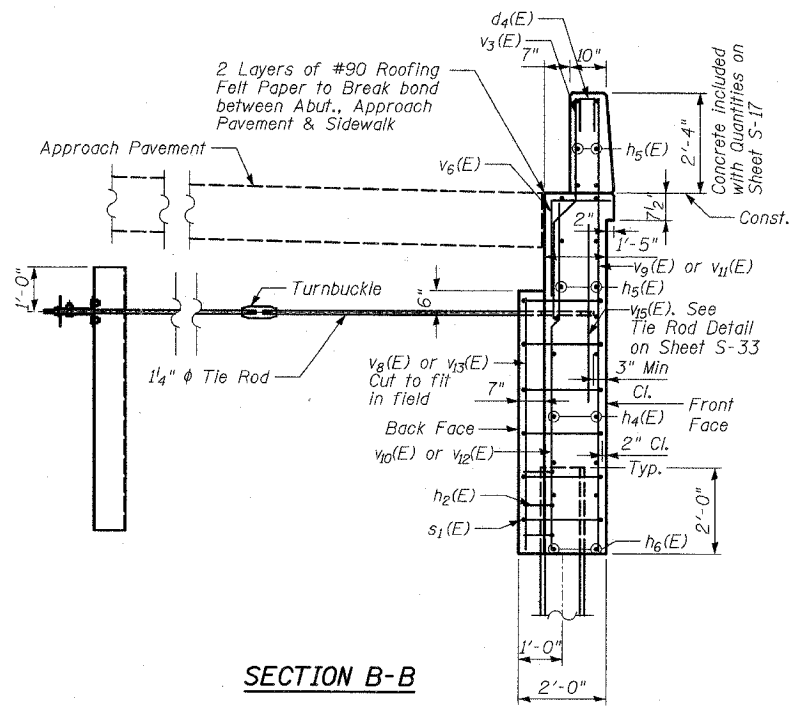


NORTH WINGWALL ELEVATION

(Looking South)

* See Field Cutting Diagram
** Cut to Fit

Note A: End Post shall be poured after Bridge Parapet is in place. Form top surface to match Parapet grade.



SECTION B-B

LEGEND

- E.F. - Denotes Each Face.
- B.F. - Denotes Back Face.
- F.F. - Denotes Front Face.

NOTES

- Quantity of Concrete in End Post included with Concrete Superstructure on Sheet S-17.
- For Details on Bar Splicers, See Sheet S-38.
- For Details on Piles and Concrete Encasement, See Sheet S-39. Concrete Encasement shall be used on each Abutment and Wingwall Pile.

REVISIONS	
NAME	DATE

ILLINOIS DEPARTMENT OF TRANSPORTATION
WEST ABUTMENT DETAILS - II
 ILLINOIS 60 OVER I-94
 F.A.P. RTE. 335 SECTION 119R-2
 LAKE COUNTY STA. 445+54.14
 S.N. 049-2012 ISTHA BRIDGE NO. 407
 DESIGNED BY: TB
 DRAWN BY: TB
 SCALE: DATE: MAY 8, 2007
 CHECKED BY: SP

TYLIN INTERNATIONAL

P:\602458\11-60\Structural\TIN\60B01.dwg 04:30:44 PM 05/03/2007