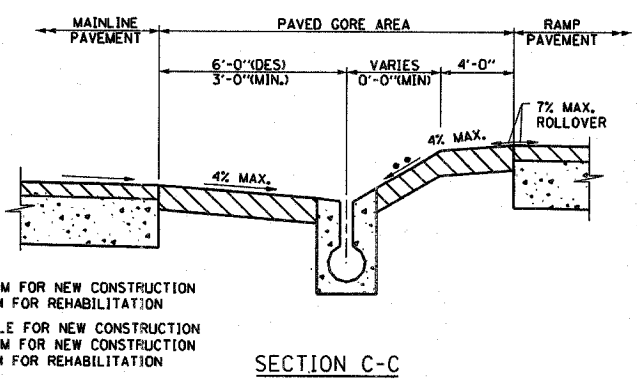
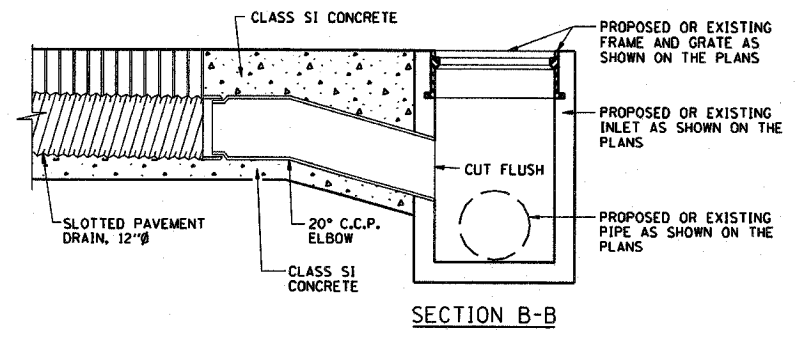
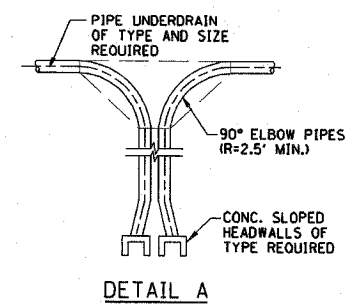
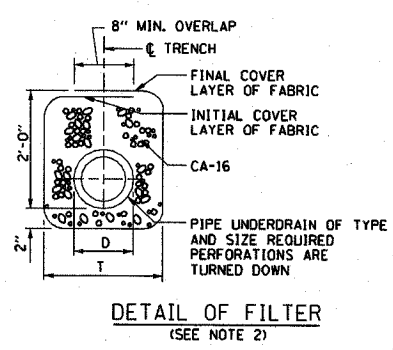
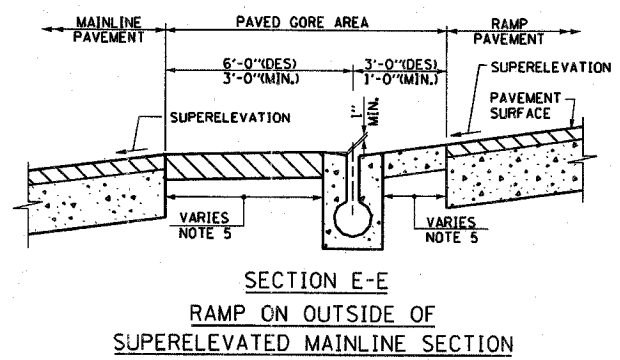
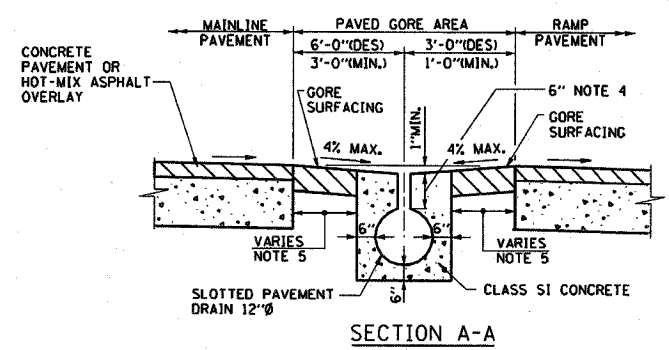


PIPE UNDERDRAIN		
PIPE DIA. "D"	SINGLE PIPE TRENCH WIDTH "T"	DOUBLE PIPE TRENCH WIDTH "T"
4"	12"	20"
6"	14"	24"
8"	16"	28"



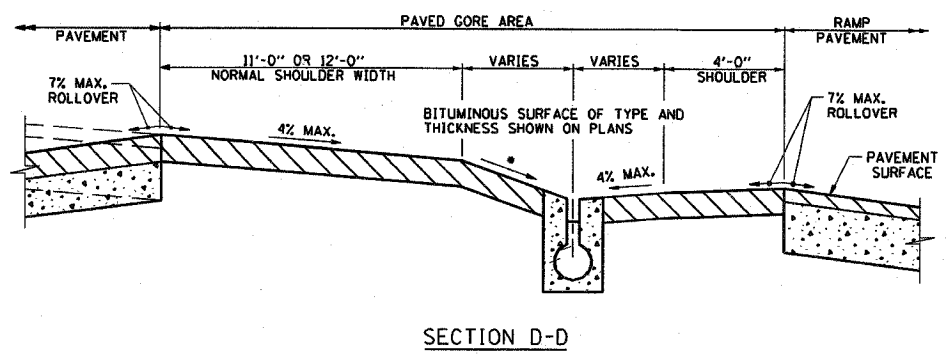
**NOTES FOR PIPE UNDERDRAIN (FILTER FABRIC):**

1. WHEN LOCATED ALONG EXISTING PAVEMENT THE CENTERLINE OF THE PROPOSED PIPE UNDERDRAIN SHALL NOT BE CLOSER THAN 2'-9" TO THE EDGE OF EXISTING PAVEMENT.
2. AT OUTLET LOCATIONS, PIPE UNDERDRAINS SHALL SEPARATE SUFFICIENTLY TO PROVIDE SPACE FOR TWO END SECTIONS TO BE CONNECTED SEE DETAIL A. ADDITIONAL GRANULAR BACKFILL AND FILTER FABRIC SHALL BE INCIDENTAL TO PIPE UNDERDRAIN, (SPECIAL) OF TYPE AND SIZE REQUIRED.
3. SUBGRADE AGGREGATE SHALL CONSIST OF A 3" AND VARIES CA-6 CAP ABOVE A PGE BASE, THICKNESS AS NOTED IN THE PLANS.

- \* 10% MAXIMUM FOR NEW CONSTRUCTION  
4% MAXIMUM FOR REHABILITATION
- \*\* 4% DESIRABLE FOR NEW CONSTRUCTION  
10% MAXIMUM FOR NEW CONSTRUCTION  
4% MAXIMUM FOR REHABILITATION

**NOTES FOR SLOTTED PAVEMENT DRAIN:**

1. SLOTTED PAVEMENT DRAINS SHALL BE 12" DIA. 16 GAUGE, FULL BITUMINOUS COATED WITH PAVED INVERT UNLESS OTHERWISE SPECIFIED.
2. SLOTTED PAVEMENT DRAINS SHALL BE INSTALLED IN A CONTOURED TRENCH AND BACKFILLED WITH CLASS S1 CONCRETE.
3. THE UPSTREAM END OF EACH SLOTTED PAVEMENT DRAIN, 12" DIA. INSTALLATION SHALL BE SEALED WITH A WELDED END PLATE IN ACCORDANCE WITH MANUFACTURERS SPECIFICATIONS, UNLESS CONNECTED TO A DRAINAGE STRUCTURE.
4. DEPTH OF SLOT CAN BE VARIED FROM 6" MINIMUM TO 12" MAXIMUM TO INCREASE SLOPE OF PIPE AS DETAILED FOR EACH SITE.
5. WHEN THE CONCRETE ENCASEMENT FOR SLOTTED PAVEMENT DRAIN IS WITHIN 3 FEET OF THE PAVEMENT, REPLACE THE GORE SURFACING WITH CLASS S1 CONCRETE 9 IN. DEPTH.



**DETAIL OF SLOTTED PAVEMENT DRAIN**

APPROVED *Jeff Daley* CHIEF ENGINEER DATE 1-1-2007



DATE	REVISIONS

PIPE UNDERDRAINS (FILTER FABRIC) AND SLOTTED PAVEMENT DRAIN  
STANDARD B12-00