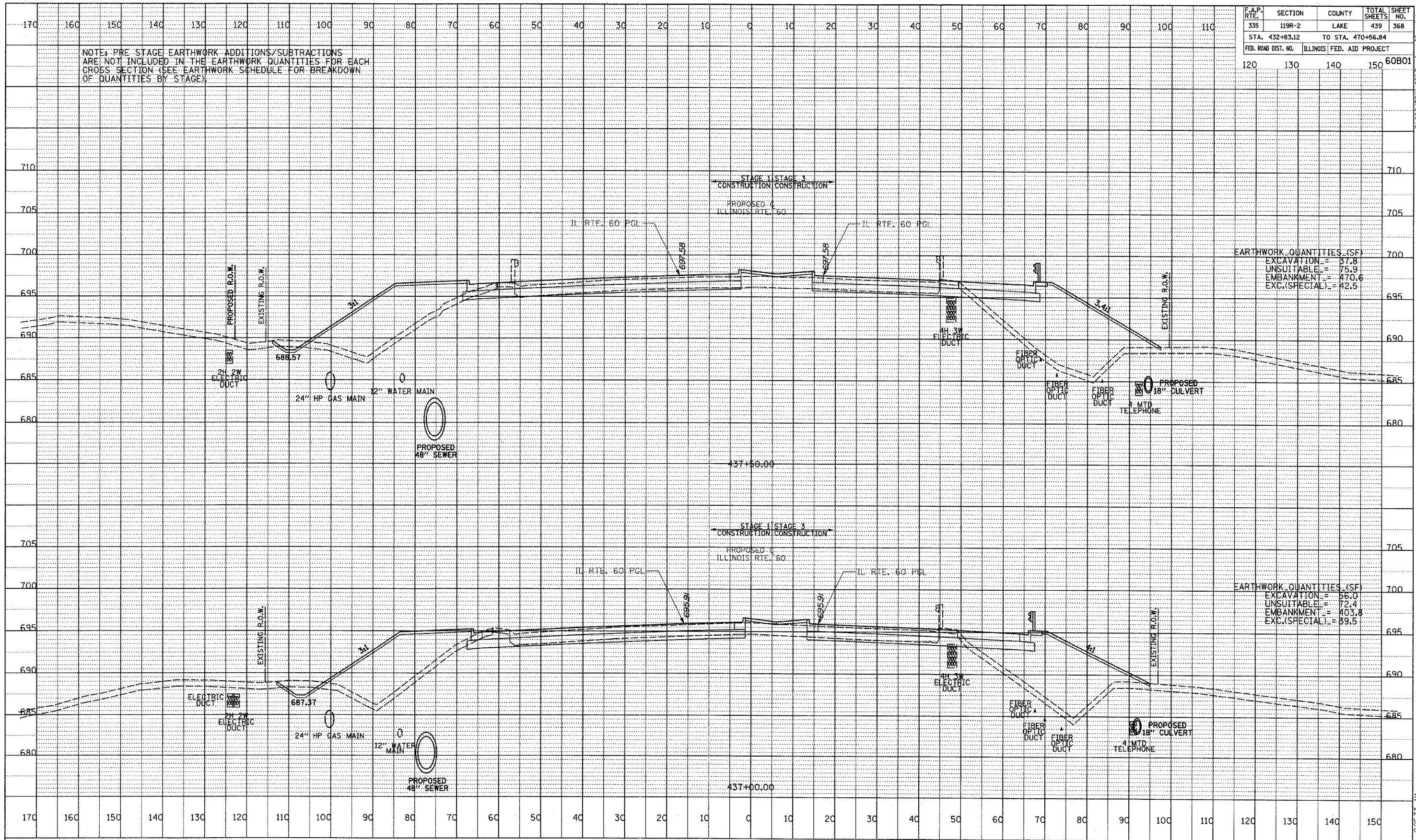


F.A.P. RTE.	SECTION	COUNTY	TOTAL SHEETS	SHEET NO.
335	119R-2	LAKE	439	368
STA. 432+83.12		TO STA. 470+56.84		
FED. ROAD DIST. NO.		ILLINOIS	FED. AID PROJECT	
120	130	140	150	60B01

NOTE: PRE-STAGE EARTHWORK ADDITIONS/SUBTRACTIONS ARE NOT INCLUDED IN THE EARTHWORK QUANTITIES FOR EACH CROSS SECTION (SEE EARTHWORK SCHEDULE FOR BREAKDOWN OF QUANTITIES BY STAGE).



EARTHWORK QUANTITIES (SF)

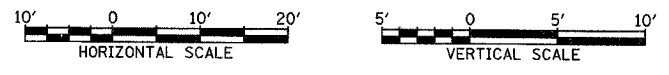
EXCAVATION	= 57.8
UNSUITABLE	= 75.9
EMBANKMENT	= 170.6
EXC.(SPECIAL)	= 42.5

EARTHWORK QUANTITIES (SF)

EXCAVATION	= 56.0
UNSUITABLE	= 72.4
EMBANKMENT	= 403.8
EXC.(SPECIAL)	= 39.5

DATE	
BY	
PROFILER	
REVISED	
GRADES CHECKED	
STRUCTURE NOTATIONS CIPVD	
NO.	

TYLIN INTERNATIONAL



ILLINOIS RTE. 60 (TOWNLIN RD)  
STA. 437+00 TO STA. 437+50

PAGE 02 OF 05 (IL 60) ROAD VAP 60 03 01 07 9:25:33 AM 5/17/2007