

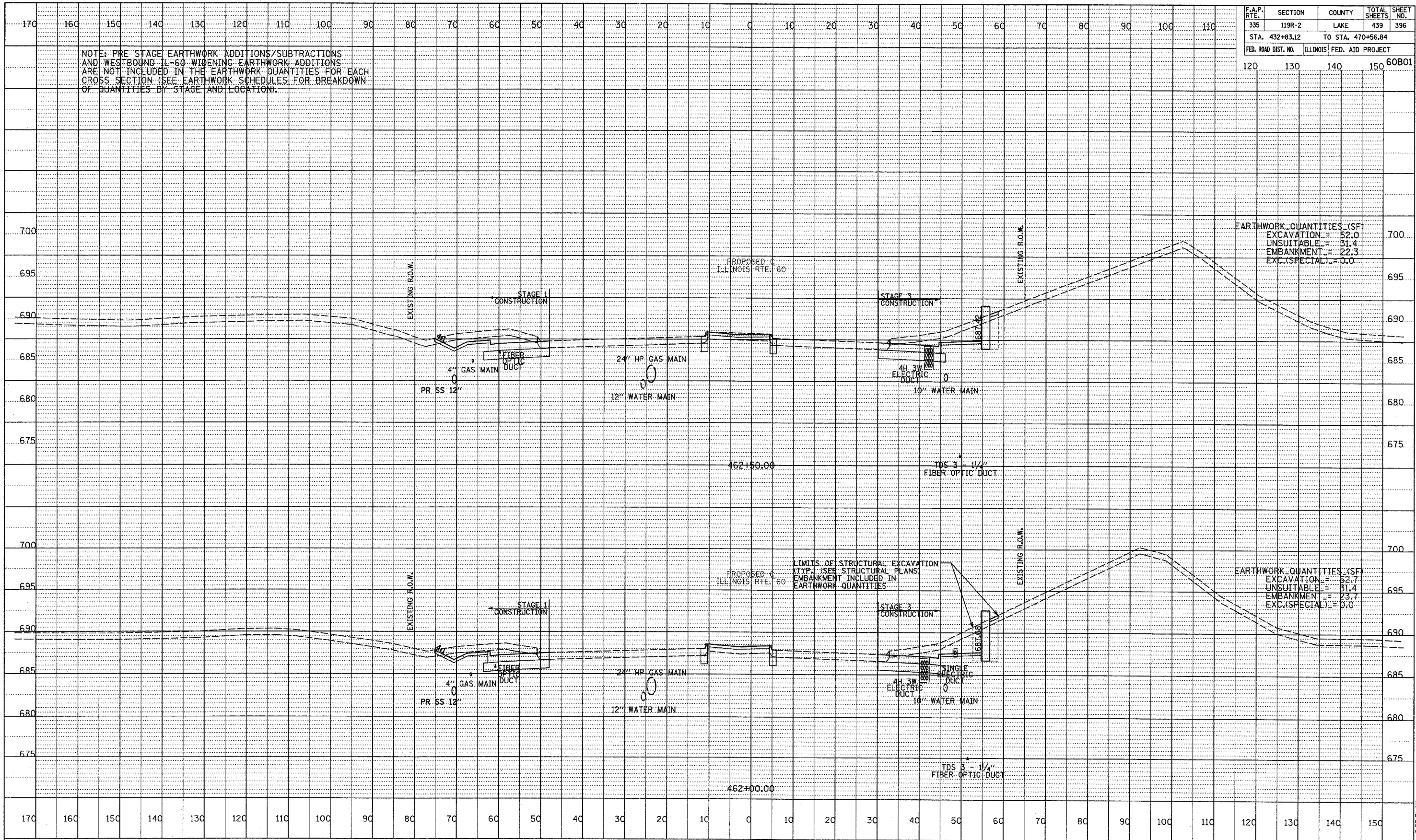
F.A.P. RTE.	SECTION	COUNTY	TOTAL SHEETS	SHEET NO.
335	119R-2	LAKE	439	396
STA. 432+83.12		TO STA. 470+56.84		
FED. ROAD DIST. NO.	ILLINOIS	FED. AID PROJECT		
	120	130	140	150
				60B01

NOTE: PRE-STAGE EARTHWORK ADDITIONS/SUBTRACTIONS AND WESTBOUND IL-60 WIDENING EARTHWORK ADDITIONS ARE NOT INCLUDED IN THE EARTHWORK QUANTITIES FOR EACH CROSS SECTION (SEE EARTHWORK SCHEDULES FOR BREAKDOWN OF QUANTITIES BY STAGE AND LOCATION).

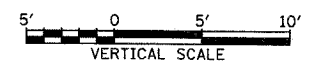
EARTHWORK QUANTITIES (SF)
 EXCAVATION = 52.0
 UNSUITABLE = 31.4
 EMBANKMENT = 22.3
 EXC.(SPECIAL) = 0.0

EARTHWORK QUANTITIES (SF)
 EXCAVATION = 52.7
 UNSUITABLE = 31.4
 EMBANKMENT = 23.7
 EXC.(SPECIAL) = 0.0

DATE	
BY	
REVISION	
NO.	
DESCRIPTION	
DATE	
BY	
REVISION	
NO.	
DESCRIPTION	



TYLIN INTERNATIONAL



ILLINOIS RTE. 60 (TOWNLIN RD)
 STA. 462+00 TO STA. 462+50

5/7/2007 9:25:31 AM