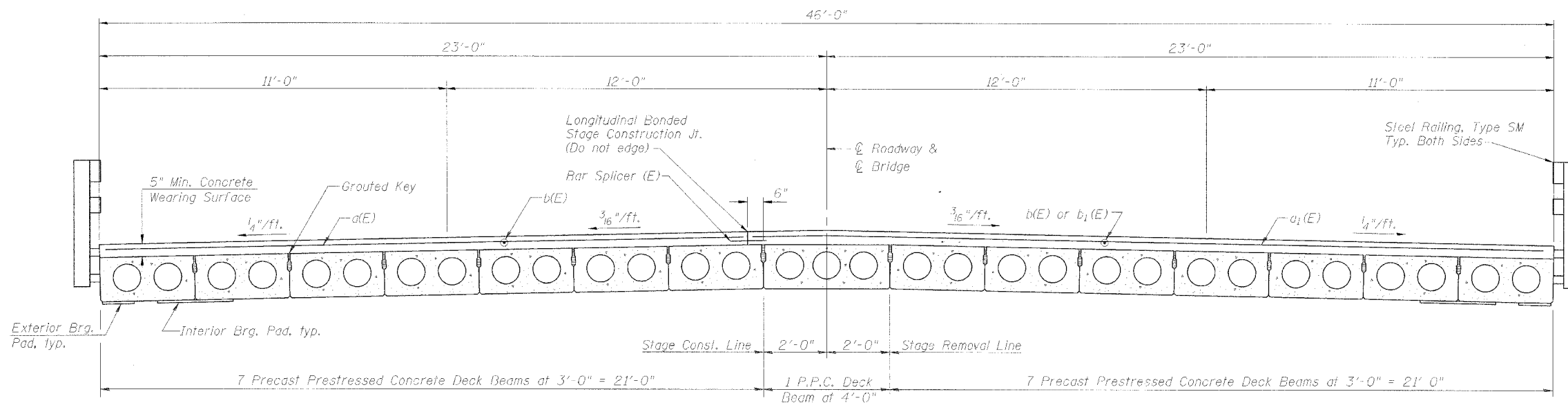


STATE OF ILLINOIS
DEPARTMENT OF TRANSPORTATION

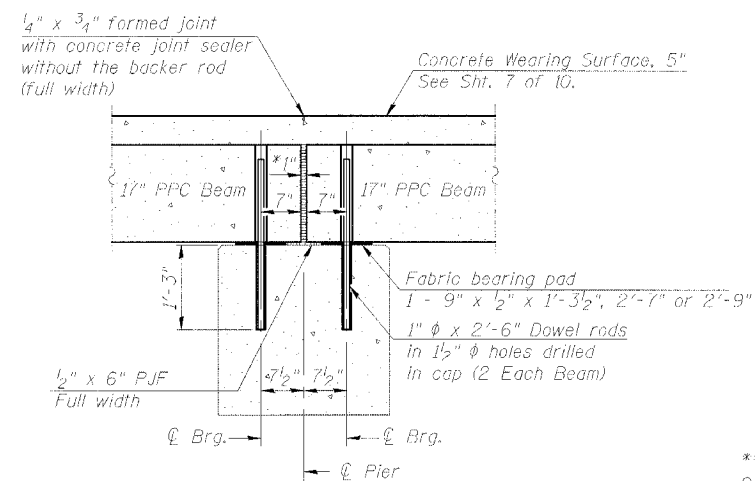
| | | | | |
|-----------------------|----------|------------------|--------------|-----------|
| ROUTE NO. | SECTION | COUNTY | TOTAL SHEETS | SHEET NO. |
| SA 13 | | Kane | 27 | 12 |
| FED. ROAD DIST. NO. 7 | ILLINOIS | FED. AID PROJECT | | |

Contract # 60B81

SHEET NO. 6
10 SHEETS

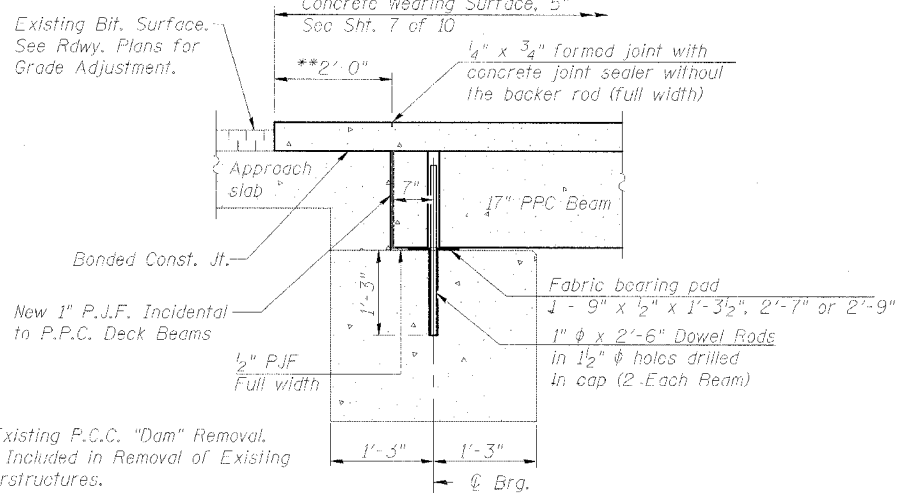


CROSS SECTION
(Looking South)



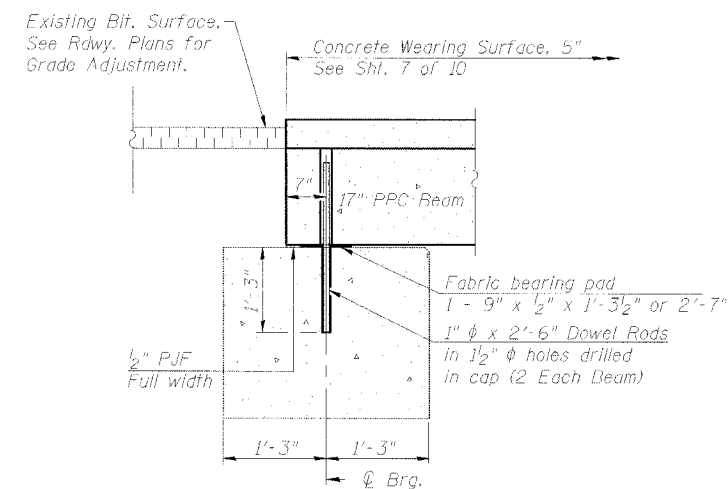
SECTION THRU FIXED PIER

*1" Jt. shall be filled with non-shrink grout. 1" dimension may vary to accommodate tolerance in beam lengths.



**SECTION THRU ABUTMENT
AT APPROACH SLAB**

** Existing P.C.C. "Dam" Removal. Cost Included in Removal of Existing Superstructures.



**SECTION THRU ABUTMENT
AT SHOULDERS**

**SUPERSTRUCTURE DETAILS
SECTIONS AND JOINT DETAILS**
S.A. 13 (IL RTE. 25)
OVER NORTON CREEK
S.A. RTE. 13 (F.A.S. 106)
KANE COUNTY, STA. 61+92.50
STRUCTURE NO. 045-0045

Notes:

1. After beams have been erected, holes shall be drilled into substructure and anchor dowels placed. Dowel holes shall be filled with non-shrink grout to top of beam and allowed to cure min. 24 hrs. prior to grouting the shear keys.
2. All horizontal dimensions are at right angles to beam ends.
3. See Sht. 5 of 10 for bearing pad details.
4. Existing dowel rods shall be burned off flush with the top of the abutment or pier.

| | |
|---------------------|------------------------------------|
| DESIGNED <i>DDB</i> | 200 |
| CHECKED <i>LLV</i> | EXAMINED |
| DRAWN <i>MGM</i> | PASSED |
| CHECKED <i>DDB</i> | ENGINEER OF BRIDGES AND STRUCTURES |

STS Consultants
111 NE Jefferson Ave.
Peoria, Illinois 61602
Ph(309)678-8464
FAX(309)676-5445
IL Design Firm Reg. No. 184-001518