

F.A.I. RTE.	SECTION	COUNTY	TOTAL SHEETS	SHEET NO.
55	2007-003 I	WILL	44	1

STATE OF ILLINOIS
DEPARTMENT OF TRANSPORTATION
DIVISION OF HIGHWAYS

**PROPOSED
HIGHWAY PLANS**

F.A.I. ROUTE 55 (INTERSTATE 55)
PARK AND RIDE LOTS AT
1) US ROUTE 6
2) US ROUTE 52
3) US ROUTE 30

SECTION: 2007-003 I
PROJECT NO.: CMI-055-6(230) 252

WILL COUNTY
C-91-168-07

FOR INDEX OF SHEETS, SEE SHEET NO. 2

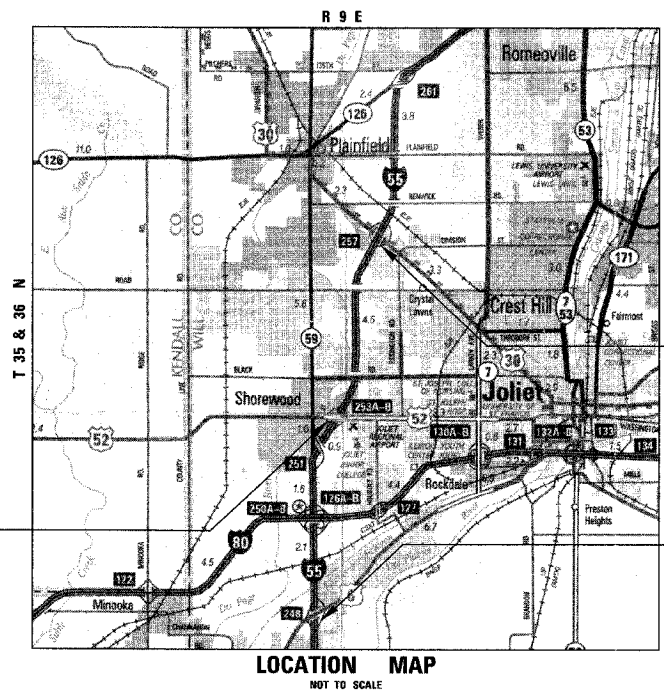
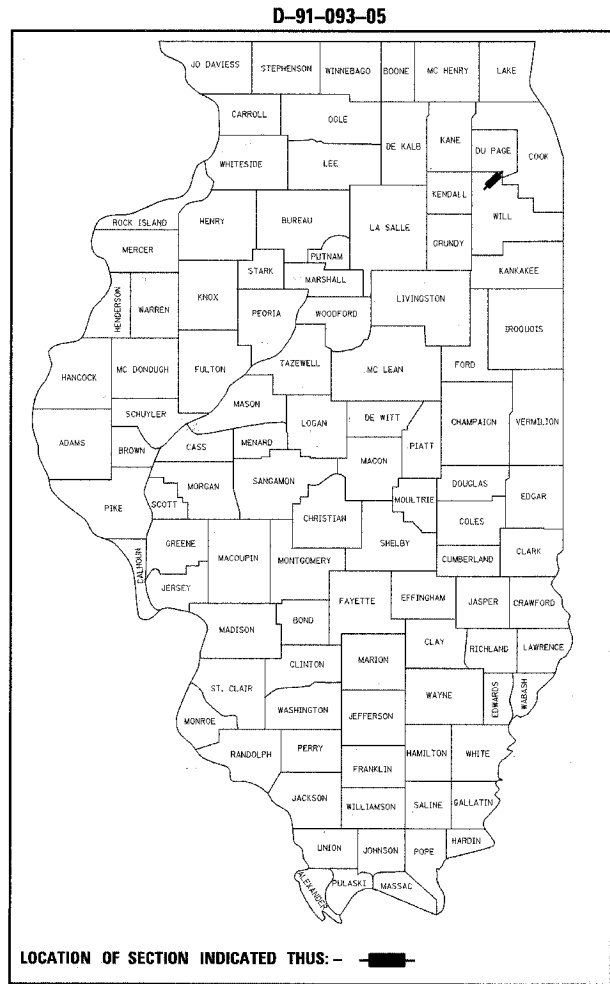
TRAFFIC DATA

ADT (2030) :
US 6 to I-80 = 64,000
I-80 to IL 59 = 83,000
IL 59 to U.S. 52 = 56,000
U.S. 52 to U.S. 30 = 60,000

POSTED SPEED :
I-55 = 65 mph

DESIGN DESIGNATION :
N/A

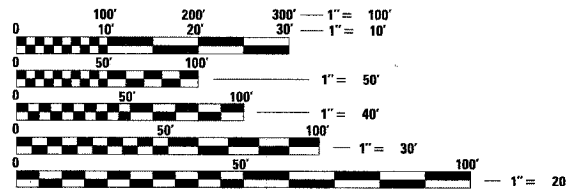
MICROFILMED _____
REEL NUMBER _____
AWARDED _____
RESIDENT ENGINEER _____
AS BUILT CHANGES WERE MADE
ON THE FOLLOWING SHEETS _____



PARK AND RIDE LOT
SW OF I-55 /
US ROUTE 52

PARK AND RIDE LOT
SE OF I-55 /
US ROUTE 30

PARK AND RIDE LOT
SE OF I-55 /
US ROUTE 6



FULL SIZE PLANS HAVE BEEN PREPARED USING STANDARD
ENGINEERING SCALES. REDUCED SIZED PLANS WILL NOT
CONFORM TO STANDARD SCALES. IN MAKING MEASUREMENTS
ON REDUCED PLANS, THE ABOVE SCALES MAY BE USED.

J.U.L.I.E.
JOINT UTILITY LOCATION INFORMATION FOR EXCAVATION
1-800-892-0123

CONTRACT NO. 60C22

DISTRICT 1 - DESIGN /CONSULTANT SERVICES
PROJECT MANAGER: RAJENDRA SHAH 847-705-4555



DOUGLAS D. HANSEN, P.E.
IL. REG. NO. 062-45293
EXPIRES: 11/30/2007
DATE: 5/8/2007

TENG
TENG & ASSOCIATES, INC.
ENGINEERS/ARCHITECTS/PLANNERS
205 N. MICHIGAN AVE. CHICAGO, IL 60601

STATE OF ILLINOIS
DEPARTMENT OF TRANSPORTATION
DIVISION OF HIGHWAYS

SUBMITTED April 19 2007

Diane O'Keefe /cal
DEPUTY DIRECTOR OF HIGHWAYS, REGION ENGINEER

June 29, 2007
Eric S. Haran /RD
INTERIM ENGINEER OF DESIGN AND ENVIRONMENT

June 29, 2007
Melton R. Sues P.E. /RD
DIRECTOR OF HIGHWAYS, CHIEF ENGINEER

**PRINTED BY THE AUTHORITY
OF THE STATE OF ILLINOIS**