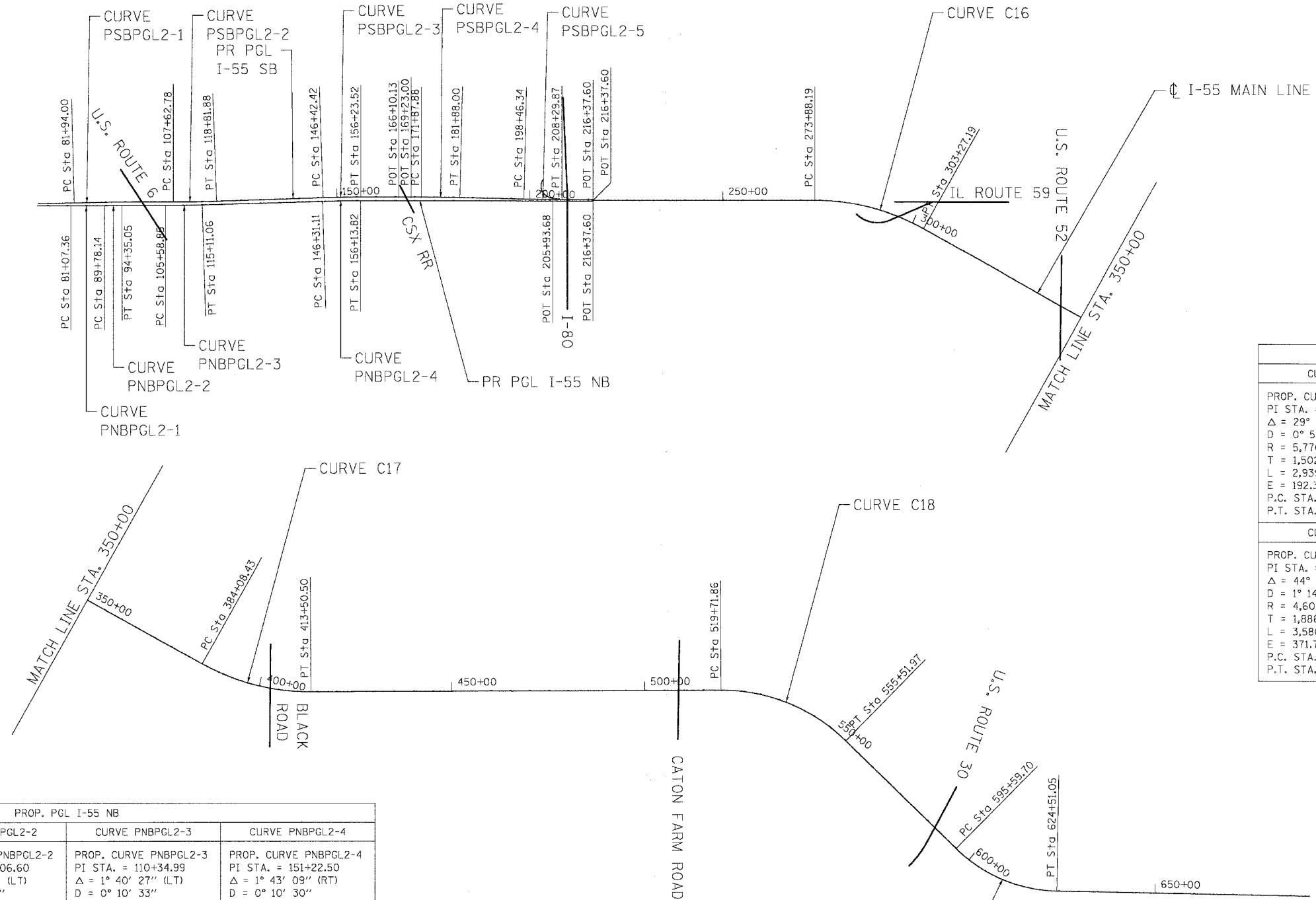


F.A.I. RTE.	SECTION	COUNTY	TOTAL SHEETS	SHEET NO.
55	2007-003 I	WILL	44	7
STA. TO STA.		FED. AID PROJECT		
FED. ROAD DIST. NO.		ILLINOIS		



PROP. CL I-55	
CURVE C16	CURVE C17
PROP. CURVE C16 PI STA. = 288+90.31 Δ = 29° 11' 03" (RT) D = 0° 59' 35" R = 5,770.00' T = 1,502.12' L = 2,939.00' E = 192.32' P.C. STA. = 273+88.19 P.T. STA. = 303+27.19	PROP. CURVE C17 PI STA. = 399+12.72 Δ = 29° 26' 39" (LT) D = 1° 00' 03" R = 5,725.00' T = 1,504.28' L = 2,942.06' E = 194.33' P.C. STA. = 384+08.43 P.T. STA. = 413+50.50
CURVE C18	CURVE C19
PROP. CURVE C18 PI STA. = 538+58.11 Δ = 44° 35' 33" (RT) D = 1° 14' 44" R = 4,600.00' T = 1,886.24' L = 3,580.11' E = 371.71' P.C. STA. = 519+71.86 P.T. STA. = 555+51.97	PROP. CURVE C19 PI STA. = 610+78.59 Δ = 43° 22' 01" (LT) D = 1° 30' 00" R = 3,820.00' T = 1,518.89' L = 2,891.35' E = 290.89' P.C. STA. = 595+59.70 P.T. STA. = 624+51.05

PROP. PCL I-55 NB			
CURVE PNBPGL2-1	CURVE PNBPGL2-2	CURVE PNBPGL2-3	CURVE PNBPGL2-4
PROP. CURVE PNBPGL2-1 PI STA. = 85+42.75 Δ = 0° 44' 30" (LT) D = 0° 05' 07" R = 67,264.42' T = 435.40' L = 870.78' E = 1.41' P.C. STA. = 81+07.36 P.T. STA. = 89+78.14	PROP. CURVE PNBPGL2-2 PI STA. = 92+06.60 Δ = 0° 41' 19" (LT) D = 0° 09' 03" R = 38,011.97' T = 228.46' L = 456.91' E = 0.69' P.C. STA. = 89+78.14 P.T. STA. = 94+35.05	PROP. CURVE PNBPGL2-3 PI STA. = 110+34.99 Δ = 1° 40' 27" (LT) D = 0° 10' 33" R = 32,588.00' T = 476.14' L = 952.21' E = 3.48' P.C. STA. = 105+58.85 P.T. STA. = 115+11.06	PROP. CURVE PNBPGL2-4 PI STA. = 151+22.50 Δ = 1° 43' 09" (RT) D = 0° 10' 30" R = 32,752.45' T = 491.39' L = 982.71' E = 3.69' P.C. STA. = 146+31.11 P.T. STA. = 156+13.82

PROP. PGL I-55 SB				
CURVE PSBPGL2-1	CURVE PSBPGL2-2	CURVE PSBPGL2-3	CURVE PSBPGL2-4	CURVE PSBPGL2-5
PROP. CURVE PSBPGL2-1 PI STA. = 94+78.49 Δ = 1° 43' 55" (RT) D = 0° 04' 03" R = 84,981.50' T = 1,284.49' L = 2,568.78' E = 9.71' P.C. STA. = 81+94.00 P.T. STA. = 107+62.78	PROP. CURVE PSBPGL2-2 PI STA. = 113+22.40 Δ = 2° 16' 06" (LT) D = 0° 12' 10" R = 28,268.14' T = 559.62' L = 1,119.03' E = 5.54' P.C. STA. = 107+62.78 P.T. STA. = 118+81.88	PROP. CURVE PSBPGL2-3 PI STA. = 151+33.02 Δ = 1° 57' 47" (RT) D = 0° 12' 00" R = 28,635.89' T = 490.60' L = 981.10' E = 4.20' P.C. STA. = 146+42.42 P.T. STA. = 156+23.52	PROP. CURVE PSBPGL2-4 PI STA. = 176+87.96 Δ = 1° 18' 02" (RT) D = 0° 07' 48" R = 44,060.28' T = 500.08' L = 1,000.13' E = 2.84' P.C. STA. = 171+87.88 P.T. STA. = 181+88.00	PROP. CURVE PSBPGL2-5 PI STA. = 203+38.12 Δ = 1° 16' 39" (LT) D = 0° 07' 48" R = 44,113.27' T = 491.78' L = 983.53' E = 2.74' P.C. STA. = 198+46.34 P.T. STA. = 208+29.87

REVISIONS	
NAME	DATE

ILLINOIS DEPARTMENT OF TRANSPORTATION
 FAI ROUTE 55 (U.S. 6 TO U.S. 30)
 PARK AND RIDE LOTS

ALIGNMENT, TIES AND BENCHMARKS
 I

SCALE: 1"=1500'
 DATE 05/10/07

DRAWN BY RJS
 CHECKED BY DDH

TENG
 TENG & ASSOCIATES, INC.
 ENGINEERS/ARCHITECTS/PLANNERS
 CHICAGO, ILLINOIS

PLOT DATE = 05/10/07
 FILE NAME = I:\PROJECTS\60C22\DRAWING\60C22-007.DWG
 PLOT SCALE = 1"=1500'
 USER NAME = RJS