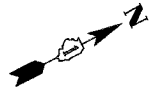
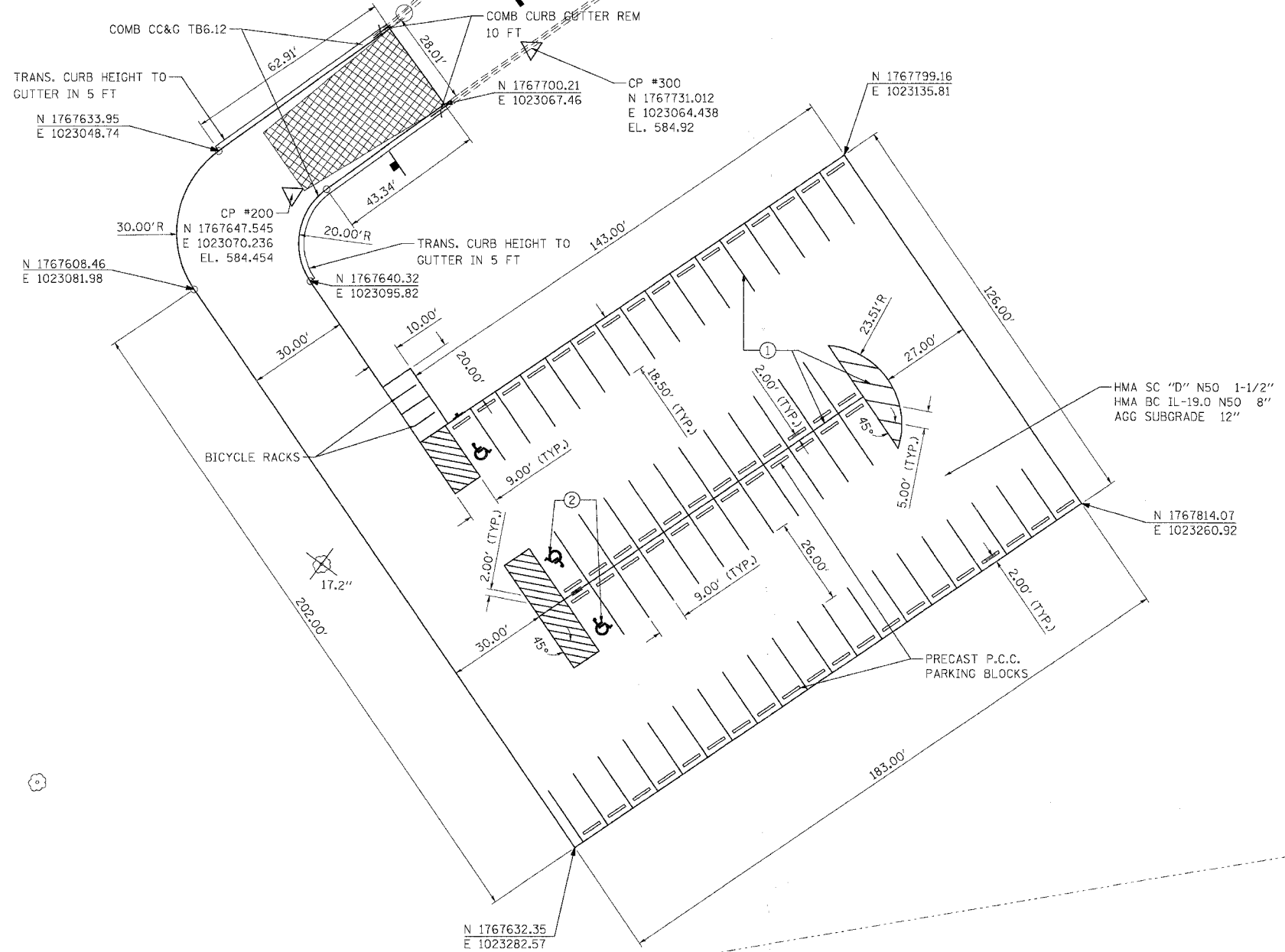


F.A.I. RTE.	SECTION	COUNTY	TOTAL SHEETS	SHEET NO.
55	2007-003 I	WILL	44	13
STA.	TO STA.			
FED. ROAD DIST. NO.	ILLINOIS	FED. AID PROJECT		



FRONTAGE ROAD

CP #301
N 1768052.045
E 1023017.786
EL. 586.56
(OFF SHEET)



CONTROL POINT INFORMATION

CP #	DESCRIPTION
200	SET PK NAIL AT SE'LY CORNER AT THE END OF BITUMINOUS ROADWAY FOR CHRYSLER CAR DEALERSHIP ±500' OFF ROUTE 52 ON THE WEST SIDE OF I-55.
300	SET CUT CROSS ON TOP OF CONCRETE CURB, ± 36.5' OFF END OF CURB AND GUTTER.
301	SET CUT CROSS ON TOP OF CONCRETE CURB, ± 38.5' NW CORNER OF INLET RIM.

NOTES:

1) GRADES ARE SHOWN ON SHEET 24

REMOVAL LEGEND



PAVEMENT MARKING LEGEND

- ① THERMOPLASTIC PAVEMENT MARKING LINE 4" (WHITE)
- ② THERMOPLASTIC PAVEMENT MARKING LETTERS & SYMBOLS (WHITE)
- ③ THERMOPLASTIC PAVEMENT MARKING LINE 6" (WHITE)
- ④ THERMOPLASTIC PAVEMENT MARKING LINE 24" (WHITE)

I-55 SB ENTRANCE RAMP FROM U.S. ROUTE 52

REVISIONS	
NAME	DATE

ILLINOIS DEPARTMENT OF TRANSPORTATION
FAI ROUTE 55 (U.S. 6 TO U.S. 30)
PARK AND RIDE LOTS

**ROADWAY & PAVEMENT MARKING PLAN
US ROUTE 52 LOCATION**

SCALE: 1"=20'
DATE: 05/10/07

DRAWN BY: RJS
CHECKED BY: DDH

TENG
TENG & ASSOCIATES, INC.
ENGINEERS/ARCHITECTS/PLANNERS
CHICAGO, ILLINOIS

PLOT DATE = #DATE#
 FILE NAME = #FILE#
 PLOT SCALE = #SCALE#
 USER NAME = #USER#
 \\P111A001.DGN, \\P111A002.DGN, \\P111A003.DGN, \\P111A004.DGN, \\P111A005.DGN, \\P111A006.DGN, \\P111A007.DGN, \\P111A008.DGN, \\P111A009.DGN, \\P111A010.DGN, \\P111A011.DGN, \\P111A012.DGN, \\P111A013.DGN, \\P111A014.DGN, \\P111A015.DGN, \\P111A016.DGN, \\P111A017.DGN, \\P111A018.DGN, \\P111A019.DGN, \\P111A020.DGN, \\P111A021.DGN, \\P111A022.DGN, \\P111A023.DGN, \\P111A024.DGN, \\P111A025.DGN, \\P111A026.DGN, \\P111A027.DGN, \\P111A028.DGN, \\P111A029.DGN, \\P111A030.DGN, \\P111A031.DGN, \\P111A032.DGN, \\P111A033.DGN, \\P111A034.DGN, \\P111A035.DGN, \\P111A036.DGN, \\P111A037.DGN, \\P111A038.DGN, \\P111A039.DGN, \\P111A040.DGN, \\P111A041.DGN, \\P111A042.DGN, \\P111A043.DGN, \\P111A044.DGN, \\P111A045.DGN, \\P111A046.DGN, \\P111A047.DGN, \\P111A048.DGN, \\P111A049.DGN, \\P111A050.DGN, \\P111A051.DGN, \\P111A052.DGN, \\P111A053.DGN, \\P111A054.DGN, \\P111A055.DGN, \\P111A056.DGN, \\P111A057.DGN, \\P111A058.DGN, \\P111A059.DGN, \\P111A060.DGN, \\P111A061.DGN, \\P111A062.DGN, \\P111A063.DGN, \\P111A064.DGN, \\P111A065.DGN, \\P111A066.DGN, \\P111A067.DGN, \\P111A068.DGN, \\P111A069.DGN, \\P111A070.DGN, \\P111A071.DGN, \\P111A072.DGN, \\P111A073.DGN, \\P111A074.DGN, \\P111A075.DGN, \\P111A076.DGN, \\P111A077.DGN, \\P111A078.DGN, \\P111A079.DGN, \\P111A080.DGN, \\P111A081.DGN, \\P111A082.DGN, \\P111A083.DGN, \\P111A084.DGN, \\P111A085.DGN, \\P111A086.DGN, \\P111A087.DGN, \\P111A088.DGN, \\P111A089.DGN, \\P111A090.DGN, \\P111A091.DGN, \\P111A092.DGN, \\P111A093.DGN, \\P111A094.DGN, \\P111A095.DGN, \\P111A096.DGN, \\P111A097.DGN, \\P111A098.DGN, \\P111A099.DGN, \\P111A100.DGN