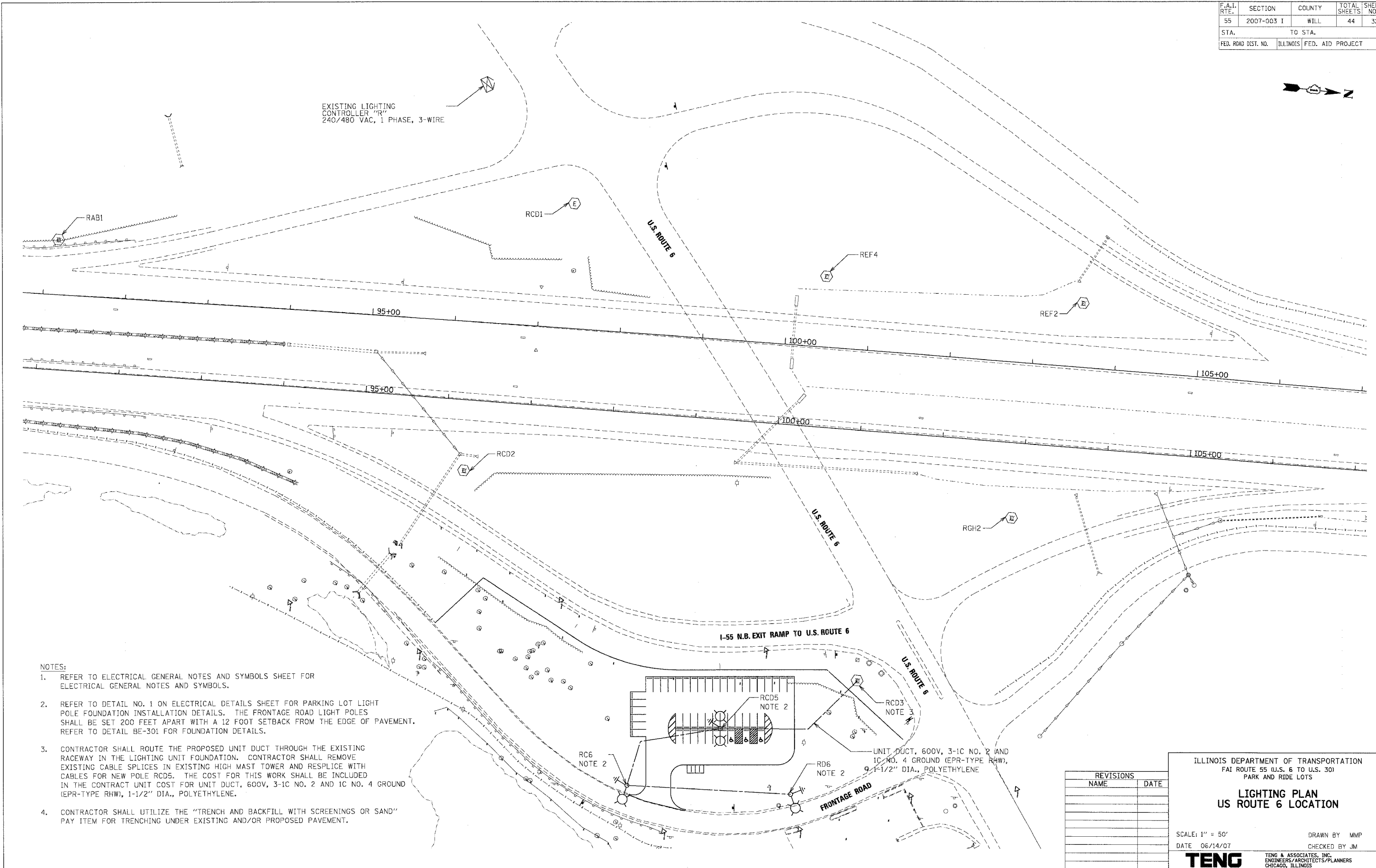
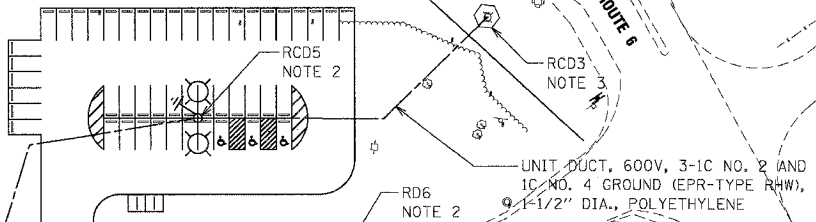


F.A.I. RTE.	SECTION	COUNTY	TOTAL SHEETS	SHEET NO.
55	2007-003 I	WILL	44	32
STA.	TO STA.			
FED. ROAD DIST. NO.	ILLINOIS FED. AID PROJECT			



NOTES:

- REFER TO ELECTRICAL GENERAL NOTES AND SYMBOLS SHEET FOR ELECTRICAL GENERAL NOTES AND SYMBOLS.
- REFER TO DETAIL NO. 1 ON ELECTRICAL DETAILS SHEET FOR PARKING LOT LIGHT POLE FOUNDATION INSTALLATION DETAILS. THE FRONTAGE ROAD LIGHT POLES SHALL BE SET 200 FEET APART WITH A 12 FOOT SETBACK FROM THE EDGE OF PAVEMENT. REFER TO DETAIL BE-301 FOR FOUNDATION DETAILS.
- CONTRACTOR SHALL ROUTE THE PROPOSED UNIT DUCT THROUGH THE EXISTING RACEWAY IN THE LIGHTING UNIT FOUNDATION. CONTRACTOR SHALL REMOVE EXISTING CABLE SPLICES IN EXISTING HIGH MAST TOWER AND RESPLICE WITH CABLES FOR NEW POLE RCD5. THE COST FOR THIS WORK SHALL BE INCLUDED IN THE CONTRACT UNIT COST FOR UNIT DUCT, 600V, 3-1C NO. 2 AND 1C NO. 4 GROUND (EPR-TYPE RHW), 1-1/2" DIA., POLYETHYLENE.
- CONTRACTOR SHALL UTILIZE THE "TRENCH AND BACKFILL WITH SCREENINGS OR SAND" PAY ITEM FOR TRENCHING UNDER EXISTING AND/OR PROPOSED PAVEMENT.



REVISIONS	
NAME	DATE

ILLINOIS DEPARTMENT OF TRANSPORTATION  
 FAI ROUTE 55 (U.S. 6 TO U.S. 30)  
 PARK AND RIDE LOTS

**LIGHTING PLAN  
 US ROUTE 6 LOCATION**

SCALE: 1" = 50'  
 DATE 06/14/07

DRAWN BY MMP  
 CHECKED BY JM

**TENG**  
 TENG & ASSOCIATES, INC.  
 ENGINEERS/ARCHITECTS/PLANNERS  
 CHICAGO, ILLINOIS

PLOT DATE = 06/14/07  
 FILE NAME = 60C22.DWG  
 PLOT SCALE = 1/4" = 1'-0"  
 USER NAME = MUSER