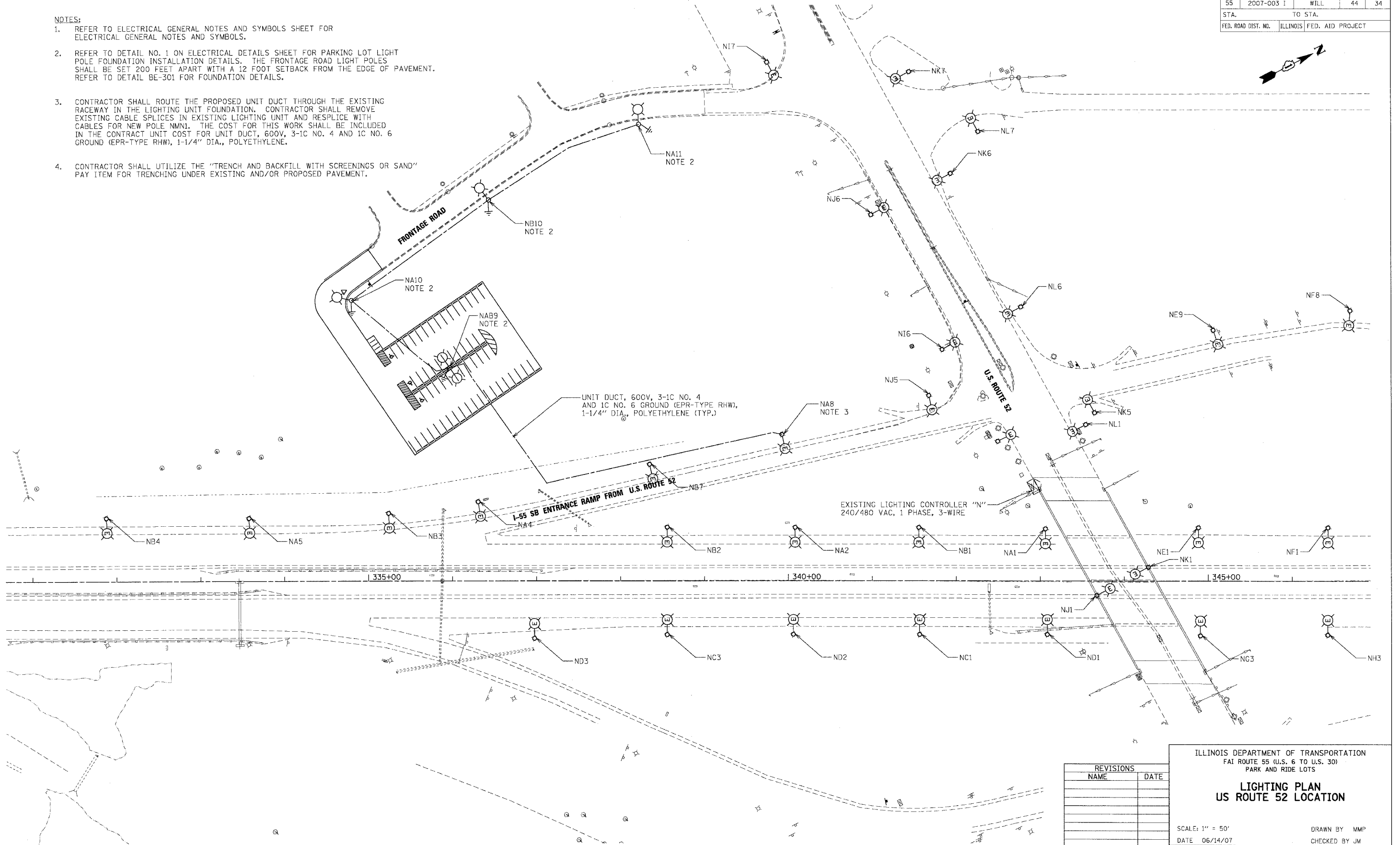


F.A.I. RTE.	SECTION	COUNTY	TOTAL SHEETS	SHEET NO.
55	2007-003 I	WILL	44	34
STA.	TO STA.			
FED. ROAD DIST. NO.	ILLINOIS FED. AID PROJECT			

- NOTES:
- REFER TO ELECTRICAL GENERAL NOTES AND SYMBOLS SHEET FOR ELECTRICAL GENERAL NOTES AND SYMBOLS.
 - REFER TO DETAIL NO. 1 ON ELECTRICAL DETAILS SHEET FOR PARKING LOT LIGHT POLE FOUNDATION INSTALLATION DETAILS. THE FRONTAGE ROAD LIGHT POLES SHALL BE SET 200 FEET APART WITH A 12 FOOT SETBACK FROM THE EDGE OF PAVEMENT. REFER TO DETAIL BE-301 FOR FOUNDATION DETAILS.
 - CONTRACTOR SHALL ROUTE THE PROPOSED UNIT DUCT THROUGH THE EXISTING RACEWAY IN THE LIGHTING UNIT FOUNDATION. CONTRACTOR SHALL REMOVE EXISTING CABLE SPLICES IN EXISTING LIGHTING UNIT AND RESPLICE WITH CABLES FOR NEW POLE NMN1. THE COST FOR THIS WORK SHALL BE INCLUDED IN THE CONTRACT UNIT COST FOR UNIT DUCT, 600V, 3-1C NO. 4 AND 1C NO. 6 GROUND (EPR-TYPE RHW), 1-1/4" DIA., POLYETHYLENE.
 - CONTRACTOR SHALL UTILIZE THE "TRENCH AND BACKFILL WITH SCREENINGS OR SAND" PAY ITEM FOR TRENCHING UNDER EXISTING AND/OR PROPOSED PAVEMENT.



PLOT DATE = #DATE#
 FILE NAME = #FILE#
 PLOT SCALE = #SCALE#
 USER NAME = #USER#

REVISIONS	
NAME	DATE

ILLINOIS DEPARTMENT OF TRANSPORTATION
 FAI ROUTE 55 (U.S. 6 TO U.S. 30)
 PARK AND RIDE LOTS

**LIGHTING PLAN
 US ROUTE 52 LOCATION**

SCALE: 1" = 50'
 DATE: 06/14/07

DRAWN BY: MMP
 CHECKED BY: JM

TENG
 TENG & ASSOCIATES, INC.
 ENGINEERS/ARCHITECTS/PLANNERS
 CHICAGO, ILLINOIS