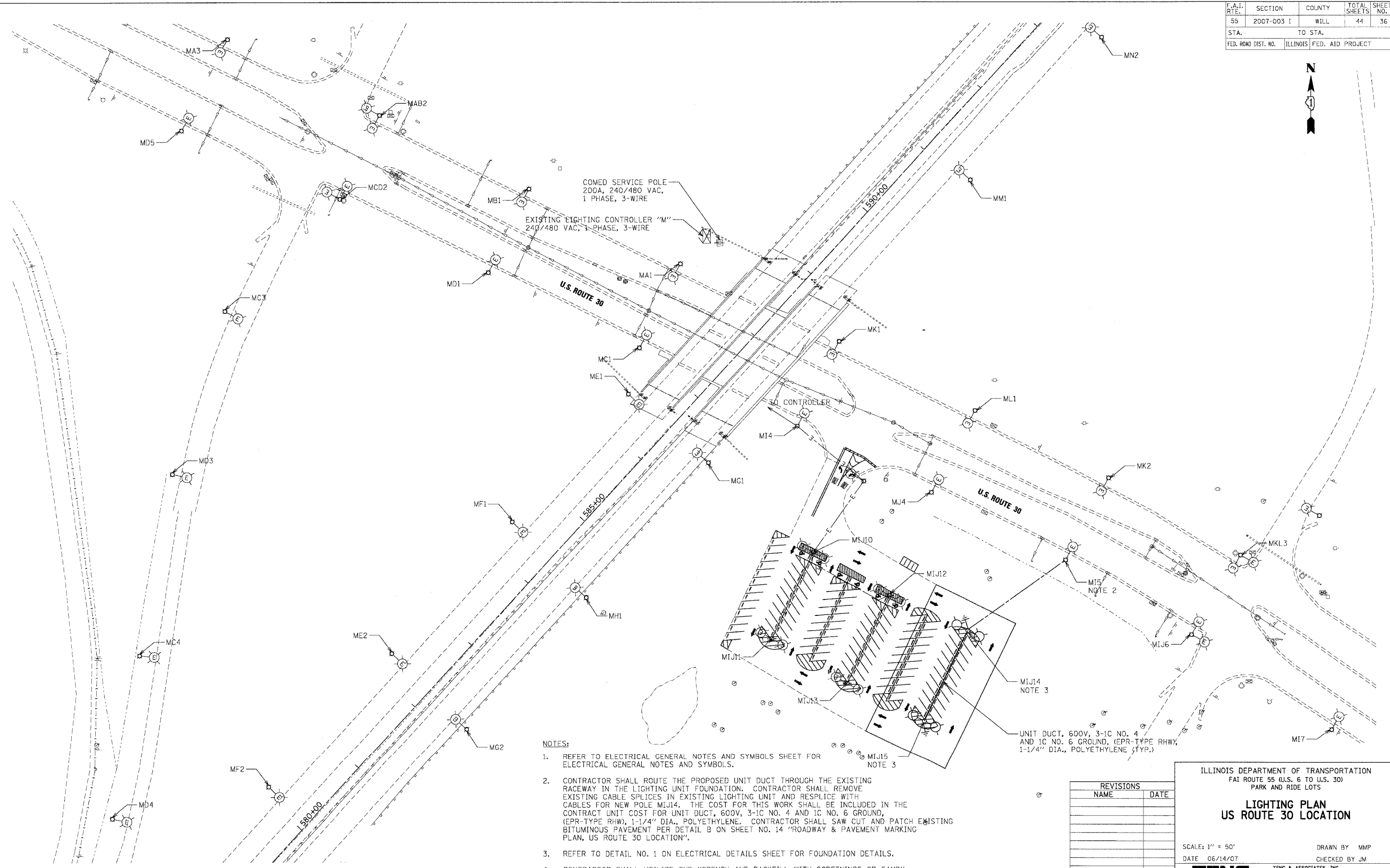


F.A.I. RTE.	SECTION	COUNTY	TOTAL SHEETS	SHEET NO.
55	2007-003 I	WILL	44	36
STA.		TO STA.		
FED. ROAD DIST. NO.		ILLINOIS FED. AID PROJECT		



NOTES:

1. REFER TO ELECTRICAL GENERAL NOTES AND SYMBOLS SHEET FOR ELECTRICAL GENERAL NOTES AND SYMBOLS.
2. CONTRACTOR SHALL ROUTE THE PROPOSED UNIT DUCT THROUGH THE EXISTING RACEWAY IN THE LIGHTING UNIT FOUNDATION. CONTRACTOR SHALL REMOVE EXISTING CABLE SPLICES IN EXISTING LIGHTING UNIT AND RESPLICE WITH CABLES FOR NEW POLE MIJ14. THE COST FOR THIS WORK SHALL BE INCLUDED IN THE CONTRACT UNIT COST FOR UNIT DUCT, 600V, 3-1C NO. 4 AND 1C NO. 6 GROUND, (EPR-TYPE RHW), 1-1/4" DIA., POLYETHYLENE. CONTRACTOR SHALL SAW CUT AND PATCH EXISTING BITUMINOUS PAVEMENT PER DETAIL 'B' ON SHEET NO. 14 "ROADWAY & PAVEMENT MARKING PLAN, US ROUTE 30 LOCATION".
3. REFER TO DETAIL NO. 1 ON ELECTRICAL DETAILS SHEET FOR FOUNDATION DETAILS.
4. CONTRACTOR SHALL UTILIZE THE "TRENCH AND BACKFILL WITH SCREENINGS OR SAND" PAY ITEM FOR TRENCHING UNDER EXISTING AND/OR PROPOSED PAVEMENT.

UNIT DUCT, 600V, 3-1C NO. 4 AND 1C NO. 6 GROUND, (EPR-TYPE RHW), 1-1/4" DIA., POLYETHYLENE (TYP.)

REVISIONS	
NAME	DATE

ILLINOIS DEPARTMENT OF TRANSPORTATION
 FAI ROUTE 55 (U.S. 6 TO U.S. 30)
 PARK AND RIDE LOTS

**LIGHTING PLAN
 US ROUTE 30 LOCATION**

SCALE: 1" = 50'
 DATE 06/14/07

DRAWN BY MMP
 CHECKED BY JM



TENG & ASSOCIATES, INC.
 ENGINEERS/ARCHITECTS/PLANNERS
 CHICAGO, ILLINOIS

PLOT DATE = #DATE#
 FILE NAME = #FILE#
 PLOT SCALE = #SCALE#
 USER NAME = #USER#