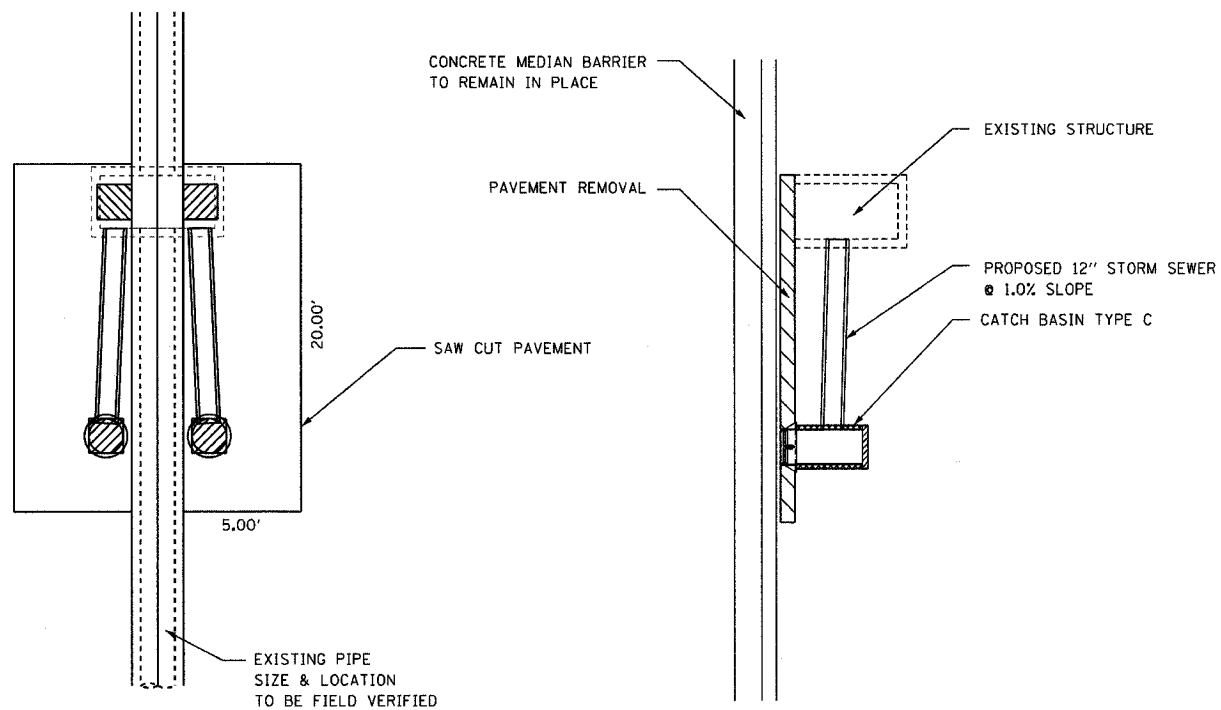


F.A.I. RTE.	SECTION	COUNTY	TOTAL SHEETS	SHEET NO.
94	2003-071 RS	COOK	91	55
STA.	TO STA.			
FED. ROAD DIST. NO. 1 ILLINOIS FED. AID PROJECT				

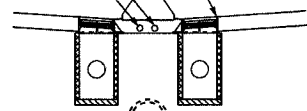


PLAN

22.22 50 YD OF PAVEMENT REMOVAL
 2 X 10 LIN FT OF 12" STORM SEWER
 2 EACH CATCH BASIN TYPE C 2' DIA.
 2 EACH TYPE 24 F & G
 THE CONCRETE MEDIAN BARRIER AND BASE ARE TO REMAIN IN PLACE.
 (THE EXISTING ELECTRICAL DUCTS ARE TO REMAIN IN PLACE)
 SUB-BASE GRANULAR MATERIAL
 10 INCH BITUMINOUS SHOULDER

RIM ELEVATION = EXISTING PAVEMENT ELEV.

EXISTING CONDUITS TO REMAIN IN PLACE



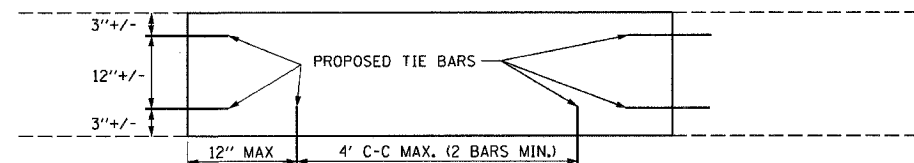
EXISTING PIPE SIZE & LOCATION TO BE FIELD VERIFIED

SECTION

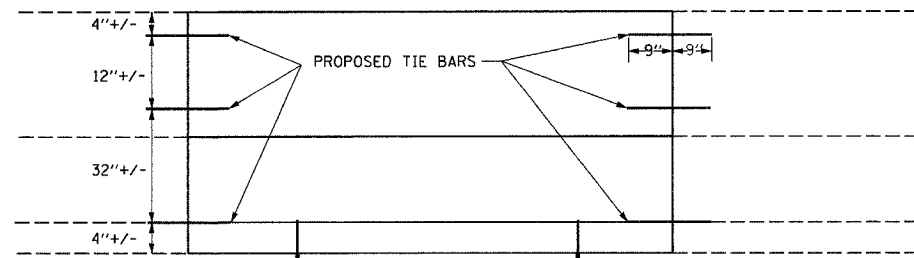
NOTE:

THE CONTRACTOR SHALL EXERCISE EXTREME CARE WITH THE EXISTING CONDUITS IN THE BARRIER WALL AND WALL FOUNDATIONS. THE CONTRACTOR WILL BE REQUIRED TO REPAIR ANY DAMAGE DONE TO THE CONDUIT TO THE SATISFACTION OF THE ENGINEER. NO SPLICING WILL BE ALLOWED TO ANY CABLE DAMAGED RESULTING FROM THIS WORK. INSTEAD THE CONTRACTOR WILL BE REQUIRED TO REPLACE THE ENTIRE SPAN OF ANY DAMAGED CABLE.

CATCH BASIN DETAIL



HALF DEPTH REPAIR



FULL DEPTH REPAIR

NOTE: ALL BARRIER WALL REPAIR SHALL BE COMPLETED IN ACCORDANCE WITH STATE STANDARD 637001-02 AND SECTION 637 OF THE STANDARD SPECIFICATIONS AND AS SHOWN ON THE PLANS. ALL PROPOSED DOWEL BARS AND TIE BARS SHALL BE DRILLED AND GROUTED IN PLACE. REINFORCEMENT SHALL BE INCLUDED AS SHOWN IN STANDARD 637001-02 AND DESCRIBED IN SECTION 637 OF THE STANDARD SPECIFICATIONS EXCEPT WHEN A REINFORCEMENT CAGE IS ENCOUNTERED. IN SUCH A CASE THE CONTRACTOR SHALL REMOVE THE DAMAGED PORTIONS OF THE CAGE AND SHALL REPLACE IT WITH BARS OF THE SAME SIZE AND SPACING. THE SCOPE OF REPAIR AT EACH LOCATION SHALL BE AS SHOWN ON THE PLANS AND APPROVED BY THE ENGINEER PRIOR TO CONSTRUCTION.

CONCRETE BARRIER REPAIR DETAIL

PLOT DATE = 06/18/2007
 PLOT SCALE = 1/8"=1'-0"
 USER NAME = 087041

REVISIONS		ILLINOIS DEPARTMENT OF TRANSPORTATION
NAME	DATE	
		CATCH BASIN DETAIL AND CONCRETE BARRIER REPAIR
SCALE: N.T.S.		DRAWN BY DP
DATE JUNE 2007		CHECKED BY

Edens I 94 Resurfacing Project