

F.A.P. RTE.	SECTION	COUNTY	TOTAL SHEETS	SHEET NO.
316	*	LEE	28	1

PROJECT ENGINEER: BOB WAGNER

STATE OF ILLINOIS  
 DEPARTMENT OF TRANSPORTATION  
 DIVISION OF HIGHWAYS

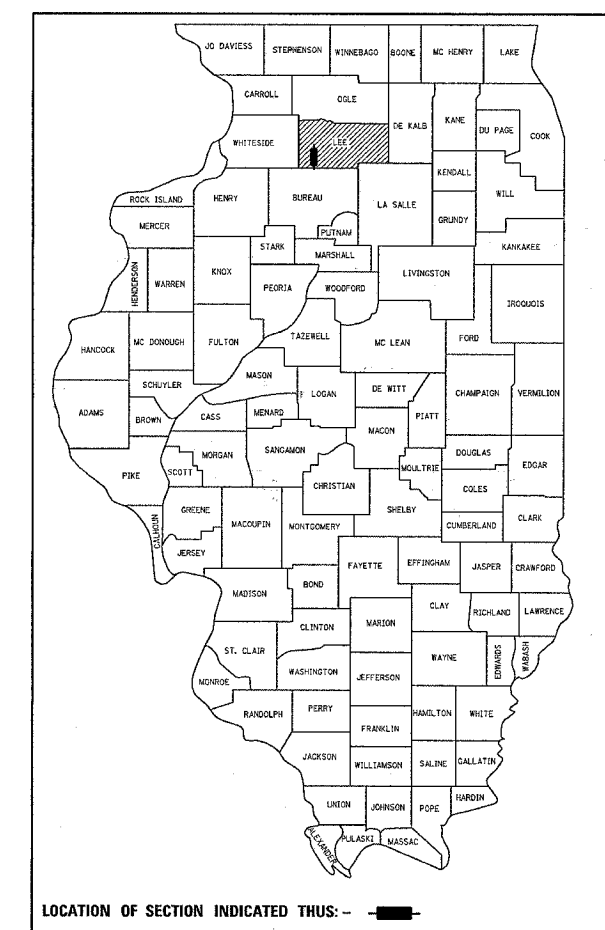
**PROPOSED  
 HIGHWAY PLANS**

FAP ROUTE 316 (IL26)  
 SECTION (102BR)M & (102BR-1)M-1

LEE COUNTY  
 C-92-015-06

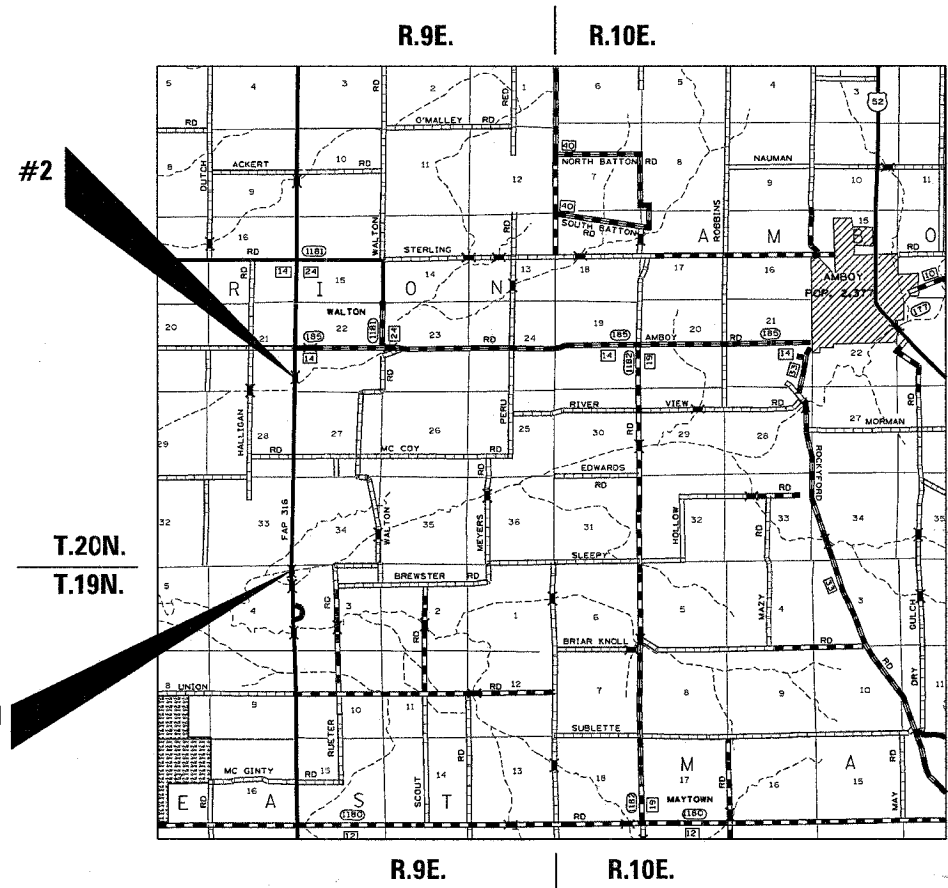
FOR INDEX OF SHEETS, SEE SHEET NO. 2  
 FOR STATE STANDARDS, SEE SHEET NO. 2

D-92-091-05

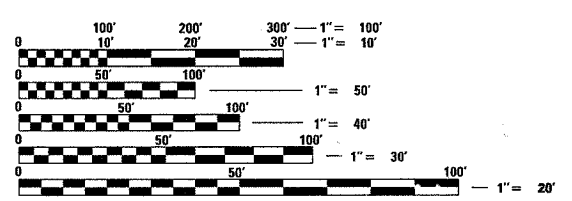


PROJECT LOCATION #2  
 STR. NO. 052-0025

PROJECT LOCATION #1  
 STR. NO. 052-0026



MARION TOWNSHIP SECTION - 21 & 22  
 EAST GROVE SECTION - 3 & 4



FULL SIZE PLANS HAVE BEEN PREPARED USING STANDARD ENGINEERING SCALES. REDUCED SIZED PLANS WILL NOT CONFORM TO STANDARD SCALES. IN MAKING MEASUREMENTS ON REDUCED PLANS, THE ABOVE SCALES MAY BE USED.

J.U.L.I.E.  
 JOINT UTILITY LOCATION INFORMATION FOR EXCAVATION  
 1-800-892-0123

SQUAD TECHNICIAN: LUCAS MEGLI (815) 284-5362

CONTRACT NO. 64B28

FAP ROUTE 316 (IL 26) SECTION 102BR-5 LEE COUNTY

STATE OF ILLINOIS  
 DEPARTMENT OF TRANSPORTATION  
 DIVISION OF HIGHWAYS

SUBMITTED 6-1 2007

*James F. Brown*  
 DEPUTY DIRECTOR OF HIGHWAYS, REGION ENGINEER

June 29, 2007  
*Eric E. Horn*  
 INTERIM ENGINEER OF DESIGN AND ENVIRONMENT

June 29, 2007  
*William R. See*  
 DIRECTOR OF HIGHWAYS, CHIEF ENGINEER

**PRINTED BY THE AUTHORITY  
 OF THE STATE OF ILLINOIS**