

B.M. Chiseled square on S.W. wingwall of bridge 15' Rt. Sta. 602+56 Elev. 695.49
 Existing Structure #052-0026 Built as S.B.I. Rt. 26, Sec. 102 B+C, at Sta. 598+65
 in the year 1927. The existing 120'-0" long by 23'-2" wide steel truss shall
 be removed and the existing R.C. closed Abuts. rebuilt and two new concrete
 enclosed pile bent piers built to accommodate a new P.P.C. Deck Beam
 Superstructure. Traffic shall be detoured.

STATE OF ILLINOIS
 DEPARTMENT OF TRANSPORTATION

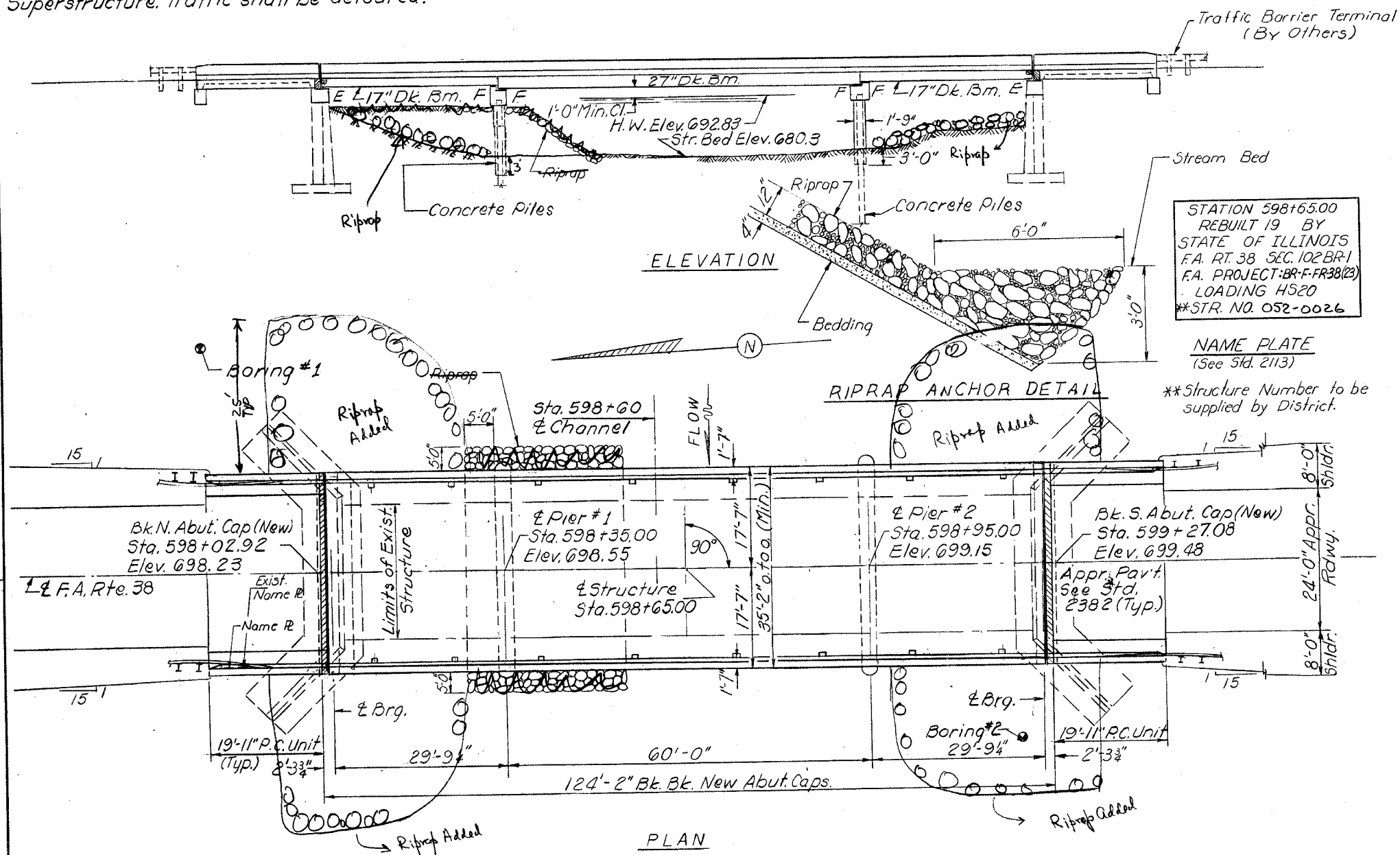
FOR INFORMATIONAL
 PURPOSES ONLY

PROJECT NO.	SECTION	SHEET NO.	TOTAL SHEETS
052-0026	BRIDGE	13	13

SHEET NO. 1
 13 SHEETS

GENERAL NOTES

Reinforcement bars shall conform to the requirements of AASHTO M-31 or M-53 Grade 60.
 See Proposal for Boring Data.
 All structural steel shall be shop painted with two coats of basic lead silico chromate paint.
 Expansion guards which are not cast in the precast unit shall be fabricated and erected in accordance with Article 503.07(c) of the Standard Specifications and are included in quantity of structural steel.
 The contractor shall drive one concrete test pile in a permanent location at Pier 1 as directed by the Engineer before ordering the remainder of piles.
 Plan dimensions and details relative to existing structure have been taken from existing plans and are subject to nominal construction variations. It shall be the Contractor's responsibility to verify such dimensions and details in the field and make necessary approved adjustments prior to construction or ordering of materials. Such variations shall not be cause for additional compensation for a change in the scope of the work, however, the Contractor will be paid for the quantity actually furnished at the unit price bid for the work.
 The top surface of the beams shall be finished in accordance with Article 505.06 of the Standard Specifications except that the surface shall not be roughened by brooming. The finished surface shall be free of depressions or high spots with sharp corners, and the top edge of keys shall be rounded or chamfered a minimum of 4".
 Limits of Waterproofing Membrane System shall be from toe to toe of parapets and end to end of deck beams.
 Protective Coat shall not be applied to surfaces to which Waterproofing Membrane System is applied.
 Shoulder transition to wingwall shall be shaped with broken concrete. Cost incidental.



STATION 598+65.00
 REBUILT BY
 STATE OF ILLINOIS
 F.A. RT. 38 SEC. 102 BR-1
 F.A. PROJECT BR-F-FR38(23)
 LOADING HS20
 **STR. NO. 052-0026

NAME PLATE
 (See Std. 2113)
 **Structure Number to be supplied by District.

TOTAL BILL OF MATERIAL

Item	Unit	Super	Sub	Total
Bituminous Concrete Surface Course, Class I	Tons	50		50
Removal of Existing Superstructures	Each	1		1
Concrete Removal	Cu. Yd.		18	18
Structure Excavation	Cu. Yd.		83	83
Stone Riprap	Sq. Yd.	130		130
Protective Coat	Sq. Yd.	42.4	110.9	153.3
Class X Concrete	Cu. Yd.	299		299
Precast Concrete Bridge Slab	Sq. Ft.	2122		2122
Precast Prestressed Concrete Deck Beams (17" Depth)	Sq. Ft.	2097		2097
Precast Prestressed Concrete Deck Beams (27" Depth)	Sq. Ft.	4620		4620
Structural Steel	Pound	4200	9150	13350
Reinforcement Bars	Pound	1480		1480
Reinforcement Bars (Epoxy Coated)	Pound		563	563
Concrete Piles	Lin. Ft.		1	1
Test Piles Concrete	Each	1		1
Name Plates	Lin. Ft.	70		70
Preformed Joint Seal 2 1/2"	Lin. Ft.	1085		1085
Portland Cement Mortar Faring Course	Sq. Yd.	429		429
Waterproofing Membrane System				

WATERWAY INFORMATION

Drainage Area 235 Sq. Mi. Low Grade Elev. @ Sta.

Flood	Freq. Yrs.	Q C.F.S.	Opening Sq. Ft. Exist.	Prop.	Nat. H.W.E.	Head Ft. Exist.	Prop.	Headwater El. Exist.	Prop.
Design	50	6400	990	990	692.83	0	0	692.83	692.83
Base	100	7250	990	990	693.3	0	0	693.3	693.3
Max. Calc.	500	9135	990	990	693.3	0	0	693.3	693.3

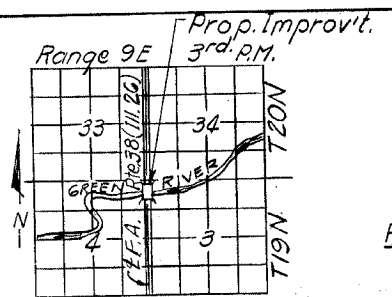
*Estimated Discharges
 Note: Proposed Opening over the Green River is one opening of a total of (3) located in the Green River floodplain. A total opening 1328 Sq. Ft. is provided below design Highwater.

DESIGN STRESSES

FIELD UNITS PRECAST UNITS
 $f'_c = 3500 \text{ p.s.i.}$ $f'_c = 4500 \text{ p.s.i.}$
 $f_y = 60,000 \text{ p.s.i. (Reinf.)}$ $f'_c = 1800 \text{ p.s.i.}$
 $f_s = 20,000 \text{ p.s.i. (Struct.)}$ $f_s = 20,000 \text{ p.s.i.}$

PRECAST PRESTRESSED UNITS

$f'_c = 5000 \text{ p.s.i.}$
 $f_{ci} = 4000 \text{ p.s.i.}$
 $f_s = 270,000 \text{ p.s.i. (2" Strands)}$
 $f_{si} = 189,000 \text{ p.s.i. (2" Strands)}$
 Design Specifications 1977 AASHTO 1978, 1979 & 1980 Interim Specs. as applicable
 Allow 25#/sq. ft. for future Wearing Surface
 LOADING HS20-44 (New Structure)



GENERAL PLAN
 F.A. RTE. 38 OVER GREEN RIVER
 F.A. RTE. 38 (ILL. RT. 26) SEC. 102 BR-1
 LEE COUNTY
 STA. 598+65.00

PROPOSED PROFILE GRADE

DESIGNED	EXAMINED	DATE
CHECKED	PASSED	FEBRUARY 24 1981
DRAWN	APPROVED	
CHECKED		

+0.99% Grade
 Sta. Increase