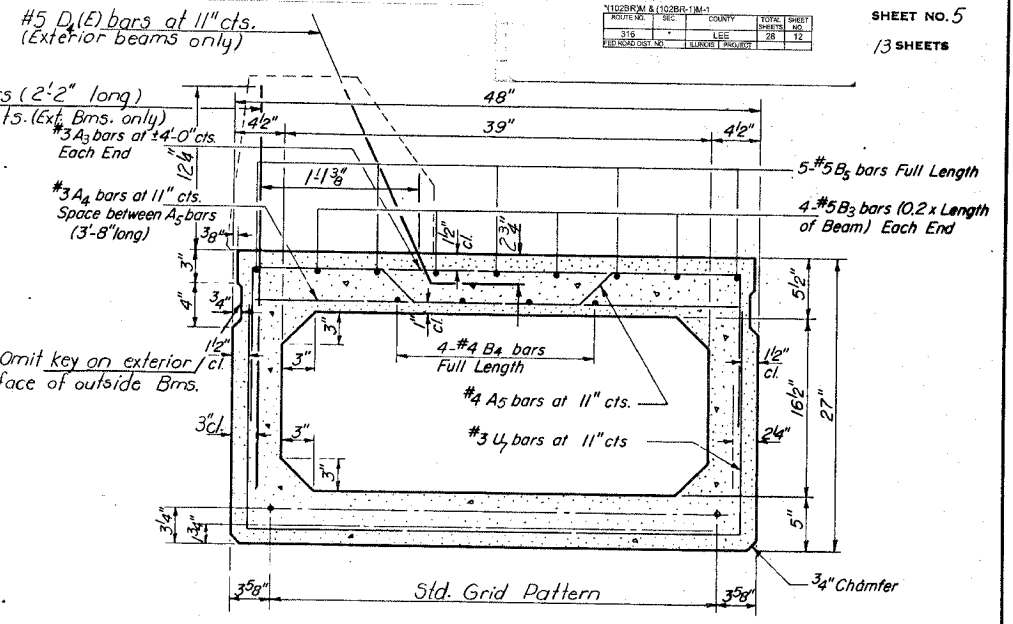
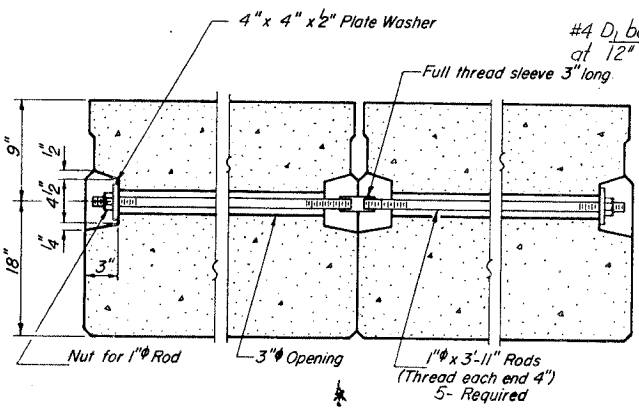
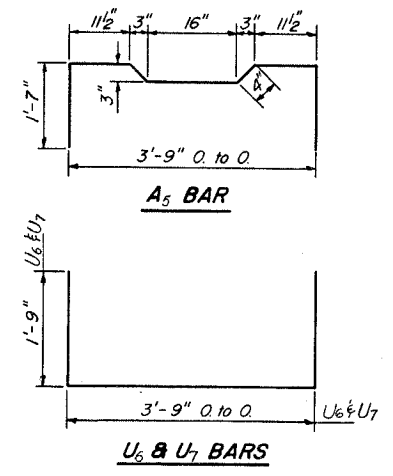
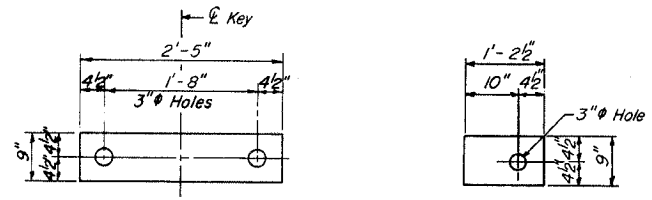


STATE OF ILLINOIS  
DEPARTMENT OF TRANSPORTATION

FOR INFORMATIONAL  
PURPOSES ONLY

PROJECT NO. 102BR-1  
COUNTY LEE  
SHEET NO. 5  
13 SHEETS

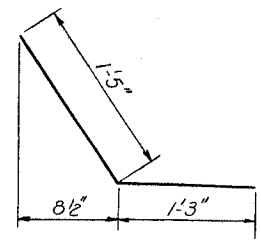
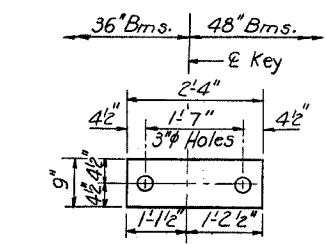


**FABRIC BEARING PAD (Interior)**  
(48" Beams)

**FABRIC BEARING PAD (Exterior)**  
(48" Beams)

**TYPICAL TRANSVERSE TIE ASSEMBLY**  
(48" Beams)

**TYPICAL SECTION**

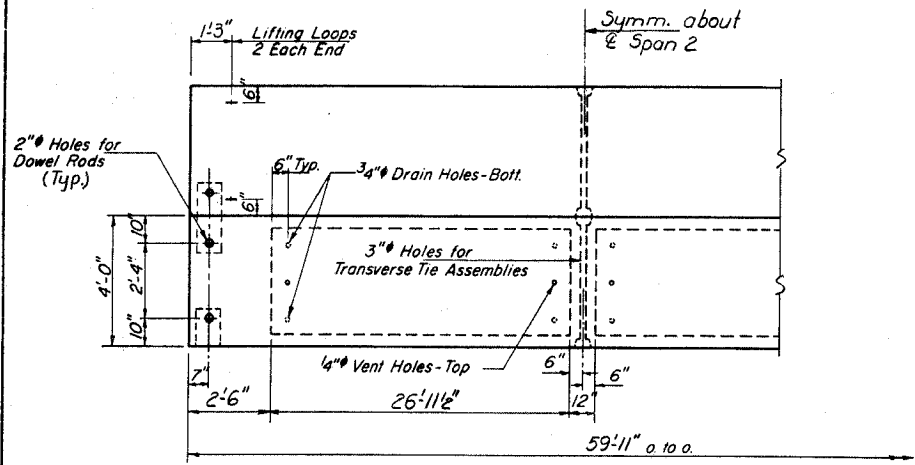


**SPECIAL FABRIC BRG. PAD**

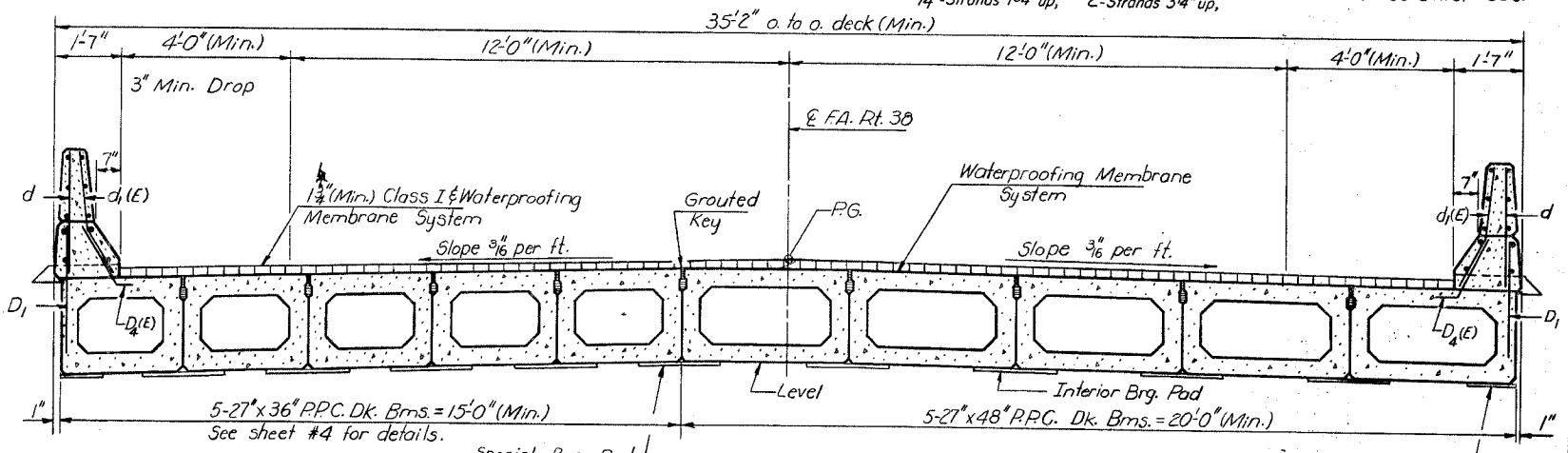
**D1(E) BAR**

16-1/2" Strands Each Strand Stressed to 28,900 Lbs.  
14-Strands 1 3/4" up, 2-Strands 3/4" up.

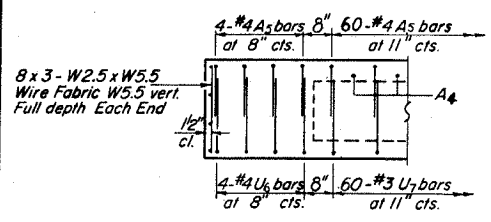
Note: Place strands symmetrically about center beam. Place to miss dowel rods.



**HALF PLAN**  
(48" Bms.)



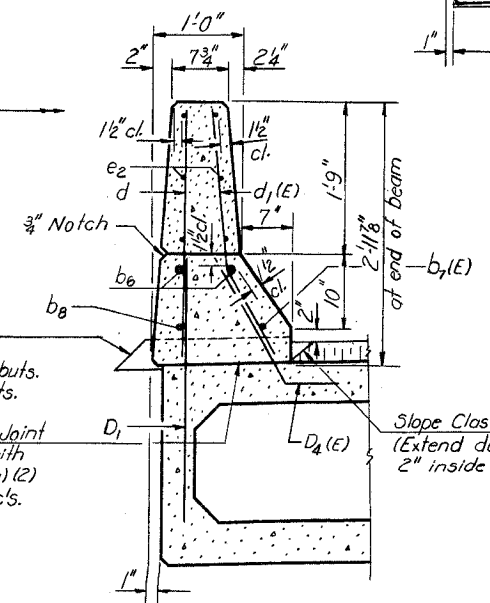
**CROSS SECTION**  
(Looking South)



**END ELEVATION**  
(48" Bms.)

4" x 8" x 3/8" Galvanized Drain Tubes located 10'-0" from Bk. of Abuts. & spaced at 15'-0" cts.

Bonded Const. Joint in accordance with Article 504.13 (a) (2) of the Std. Spec's.



**SEC. THRU PARAPET**  
(Span 2)

**NOTES**  
Prestressing steel shall be non-galvanized high strength, stress-relieved 7-wire strand, Grade 270. The nominal diameter shall be 1/2" and the nominal cross-sectional area shall be 0.153 sq. in. Lifting loops shall be 3/8" diameter, 6 x 25 class wire rope with fiber core and shall have a minimum ultimate tensile strength of 33,000 lbs. or 2-1/2" A-270 ksi strands as shown on sheet #2. The 1" rods in the transverse tie assembly shall be tightened to a snug fit and the threads set. Pockets that receive transverse tie bar on outside shall be filled with grout after transverse tie assembly is in place.  
Reinforcement bars shall conform to AASHTO M-31 or M-53, Grade 60. The bearing seat surfaces shall be adjusted by shimming to assure firm and even bearing. Two 1/8" fabric adjusting shims of the dimensions of the Exterior Bearing Pad shall be provided for each bearing.  
Parapet reinforcement and Class X Concrete are billed on sheet #8. For Drain Detail see sheet #3.

**BILL OF MATERIAL**

| Item  | Unit    | Total |
|---|---------|-------|
|   |         |       |
|   |         |       |
|   |         |       |
|   |         |       |
|   |         |       |
| * Precast Prestressed Concrete Deck Beams (27" Depth) | Sq. Ft. | 1198  |

\* For 48" Beams. See sheet #4 for Bill of Material for 36" Bms.

**SUPERSTRUCTURE**  
**SPAN 2**  
**FA. RT. 38 SEC. 102 BR-1**  
**LEE COUNTY**  
**STA. 598+65.00**

DESIGNED: *[Signature]*  
CHECKED: *M. Ryan*  
DRAWN: *R. Doty*  
CHECKED: *MR*

EXAMINED: *[Signature]*  
PASSED: *[Signature]*  
APPROVED: *[Signature]*