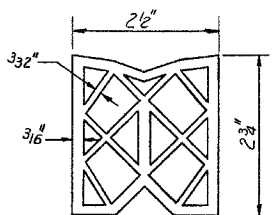
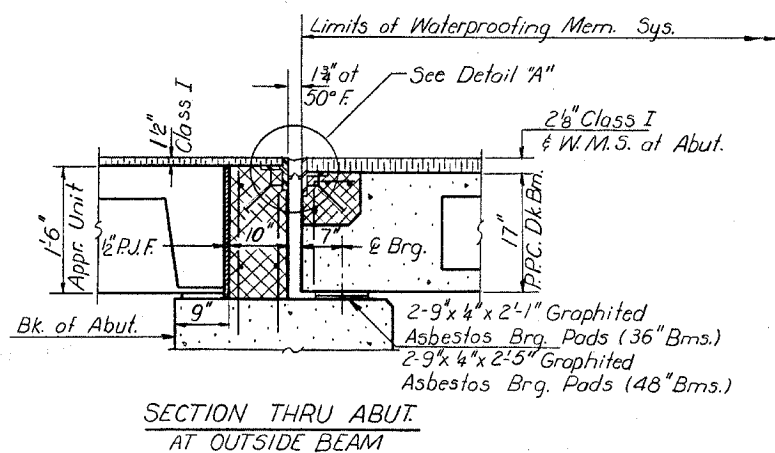
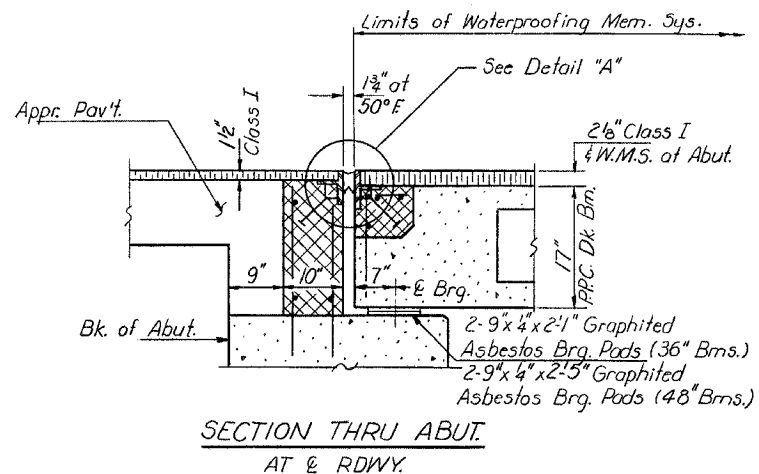


STATE OF ILLINOIS  
DEPARTMENT OF TRANSPORTATION

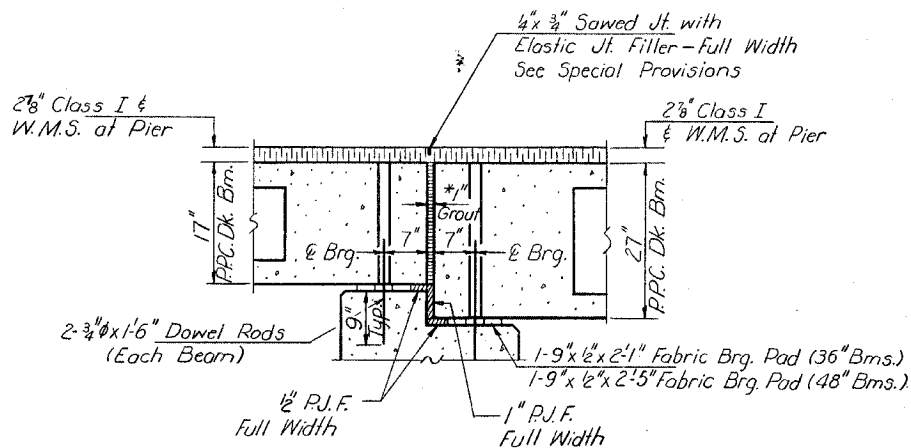
FOR INFORMATIONAL  
PURPOSES ONLY

ROUTE NO.	SEC.	COUNTY	TOTAL SHEETS
316		LEE	28
PROJECT NO.	ILLINOIS PROJECT		13

SHEET NO. 6  
13 SHEETS

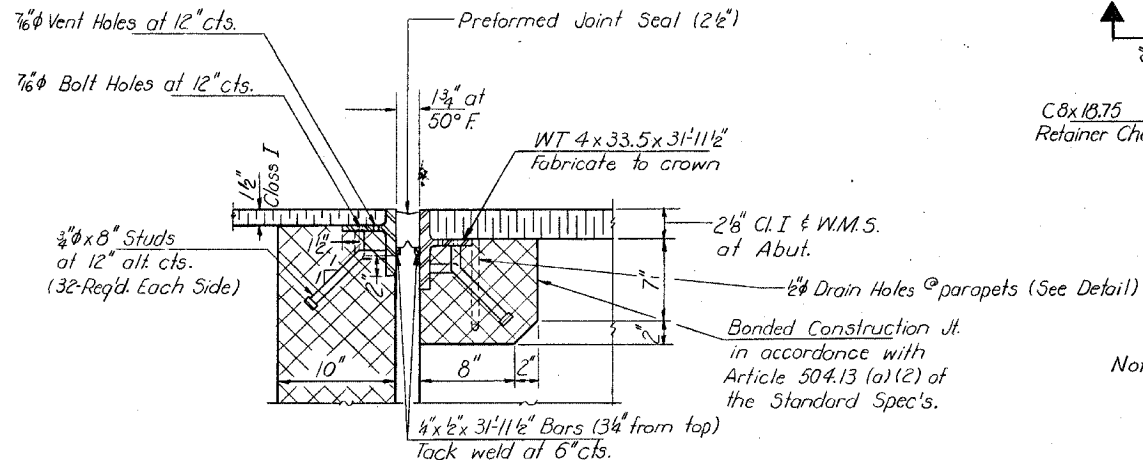


**PREFORMED JOINT SEAL (2 1/2")**

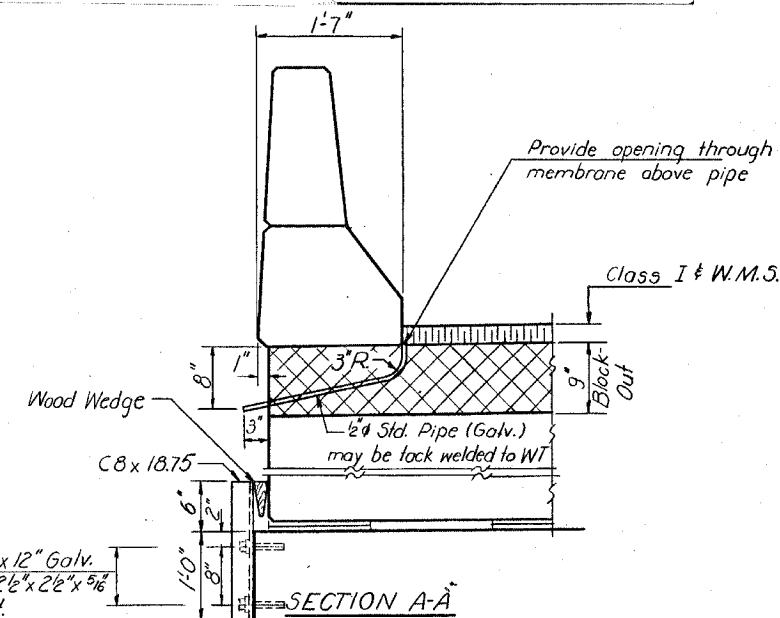


\*1" Joint shall be packed with a very dry mix of 2:1 sand and PC. mortar. This dimension may vary plus or minus to accommodate tolerance in beam lengths.

Note:  
After beams are in place, holes shall be drilled into the bridge seat and the dowel rods grouted in place prior to grouting shear keys.

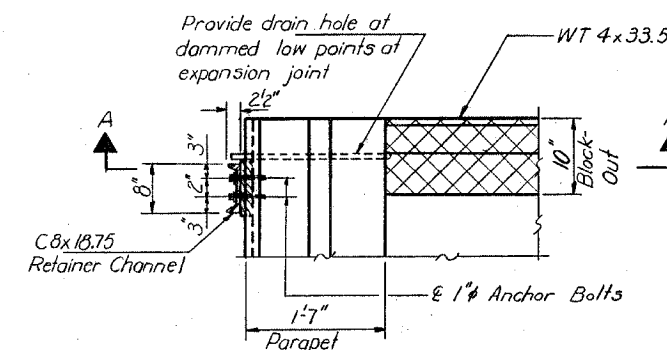


**DETAIL "A"**  
NOTES: Dimensions are at right angles. Cross hatched areas to be poured after beams have been erected and joints grouted. Quantity of Class X Concrete included with superstructure on sheet #8. Ends of beams shall be aligned at the expansion joints. Any lineal variation in the beam lengths shall be placed at the fixed ends. See End of Beam Detail on sheets #2 & #3 for reinforcement.



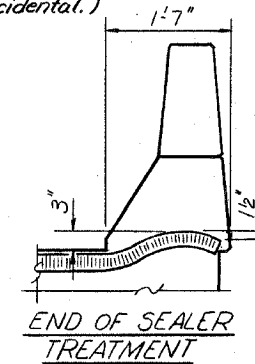
\* & 1/4" Holes for 1" x 12" Galv. Anchor Bolts with 2 1/2" x 2 1/2" x 3/8" IR washer under nut.

\*Anchor bolts may be cast into the masonry or placed in drilled holes and grouted in place. Cost including Retainer Channel and Accessories Incidental to Beams.



**PLAN-DRAIN HOLES  
& RETAINER CHANNEL  
AT EXPANSION JOINT**

Note: After block-outs are poured and cured the retainer channels shall be removed. Anchor bolts may be left in place. (Cost for removal of retainer channels shall be incidental.)



DESIGNED	<i>Joseph Romano</i>
CHECKED	<i>M. Ryan</i>
DRAWN	<i>R. Doty</i>
CHECKED	<i>MR</i>

EXAMINED	<i>[Signature]</i>	FEB. 24 1981
PASSED		
APPROVED		

SUPERSTRUCTURE DETAILS  
F.A. RT. 38 SEC. 102 BR-1  
LEE COUNTY  
STA. 598+65.00