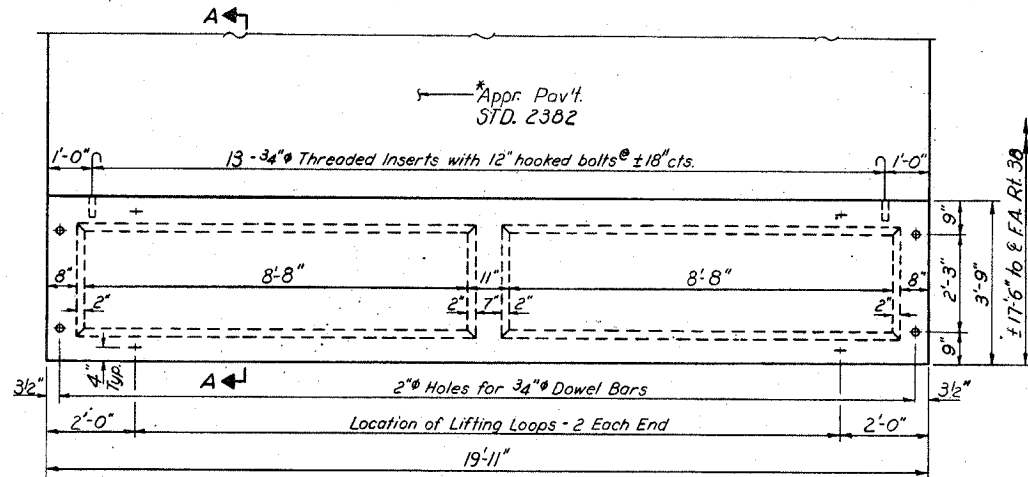
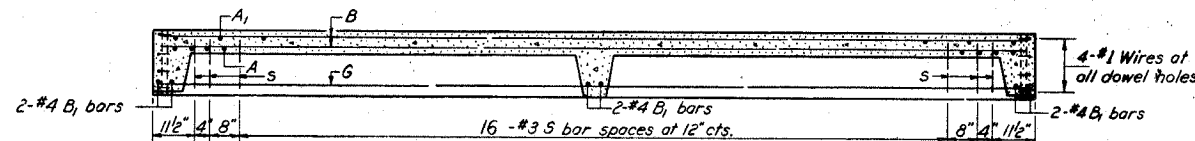


ELEVATION

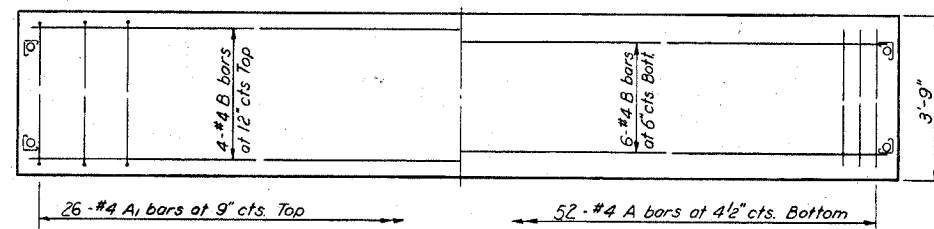
Note: Furnish 2 Right Hand Units & 2 Left Hand Units  
See sheet #8 for parapet joint spacing.



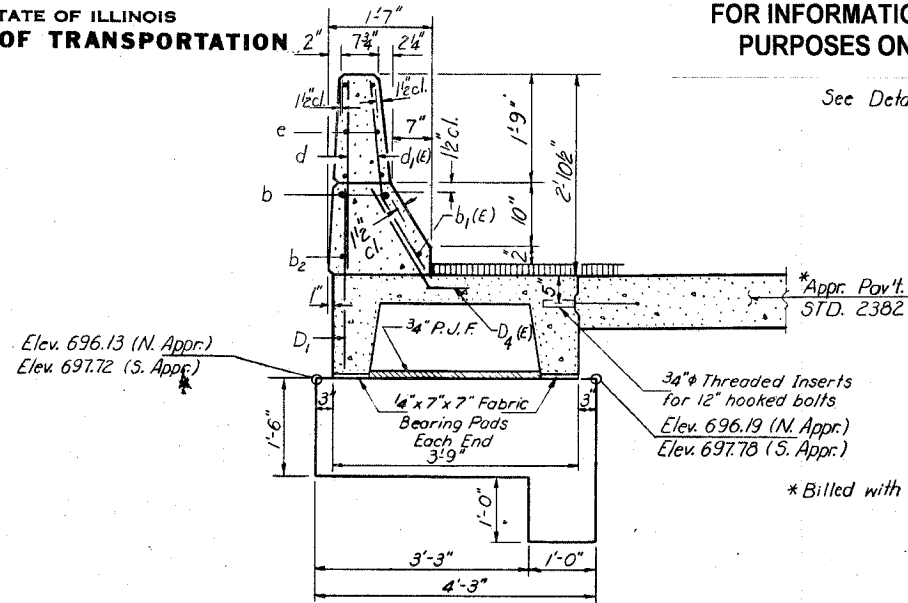
PARTIAL PLAN OF APPROACH



LONGITUDINAL SECTION

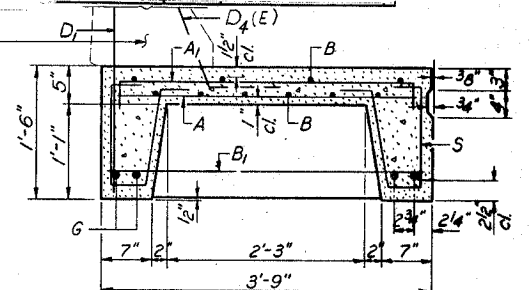


SLAB REINFORCEMENT



SECTION A-A

\*Billed with Roadway Plans.



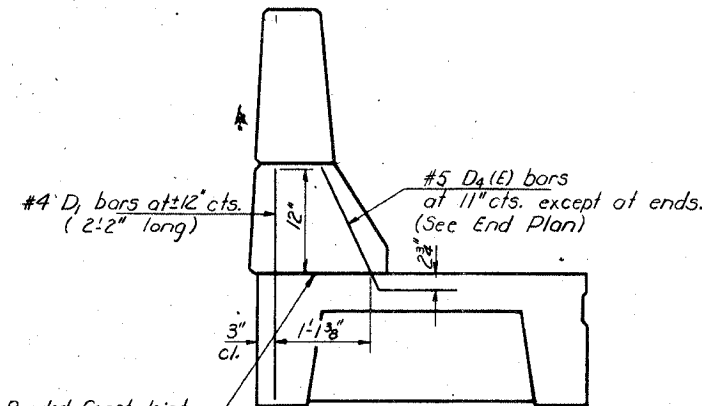
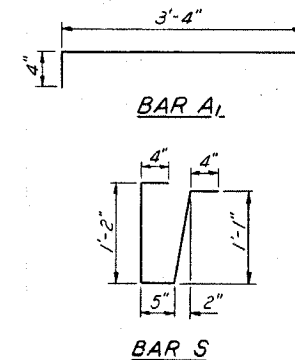
SECTION THRU PRECAST UNIT

BAR LIST - ONE UNIT

Reinforcement to be cast into slab

Bar	No	Size	Length	Shape
A	52	#4	3'-3"	
A <sub>1</sub>	26	#4	4'-0"	
B	10	#4	19'-6"	
B <sub>1</sub>	6	#4	3'-6"	
D <sub>1</sub>	21	#4	2'-2"	
D <sub>4</sub> (E)	19	#5	2'-8"	
D <sub>5</sub> (E)	3	#5	2'-6"	
G	4	#10	19'-6"	
S	42	#3	3'-4"	

Reinforcement bars designated (E) shall be Epoxy Coated. See Special Provisions.



DETAIL "A"

Bonded Const. Joint in accordance with Article 504.13(a)(2) of the Std. Spec's.

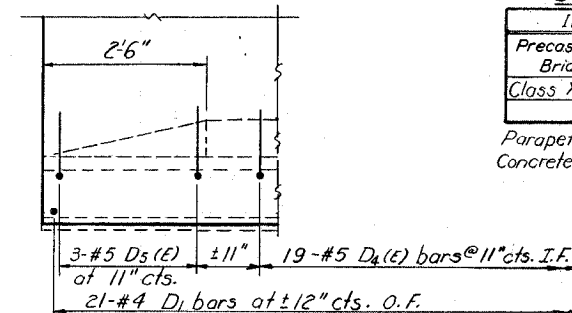
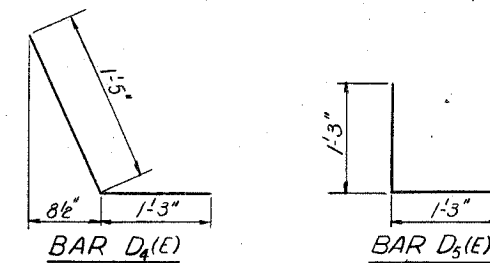
NOTES

Unless otherwise approved by the Engineer, lifting loops shall be 1/2" 6x25 class wire rope with fiber core and shall have a minimum ultimate strength of 21,000 lbs. or 2-1/2" -270 ksi strands as shown on sheet #2. Holes shall be drilled and anchor dowels grouted in place. Cost of reinforcement and accessories cast into the slab unit, bearing pads, furnishing, drilling for, placing and grouting anchor dowels and 3/4" hooked bolts is included in Unit bid price for "Precast Concrete Bridge Slab." The Precast Concrete Bridge Slab shall be erected and aligned with the exterior face of the exterior Deck Beam after Deck Beams are in final position.

BILL OF MATERIAL

Item	Unit	Quantity
Precast Concrete Bridge Slab	Sq. Ft.	299
Class X Concrete	Cu. Yd.	1.6

Parapet reinforcement and Class X Concrete are billed on sheet #8.



END PLAN  
APPR. SLAB

APPROACH DETAILS  
F.A. RT. 38 SEC. 102 BR-1  
LEE COUNTY  
STA. 598+65.00

DESIGNED <i>John Romanos</i>	EXAMINED FEB 24 1981 <i>[Signature]</i>
CHECKED <i>M. Ryan</i>	PASSED [Signature]
DRAWN <i>R. Doty</i>	APPROVED [Signature]
CHECKED <i>MR</i>	DIRECTOR OF HIGHWAYS