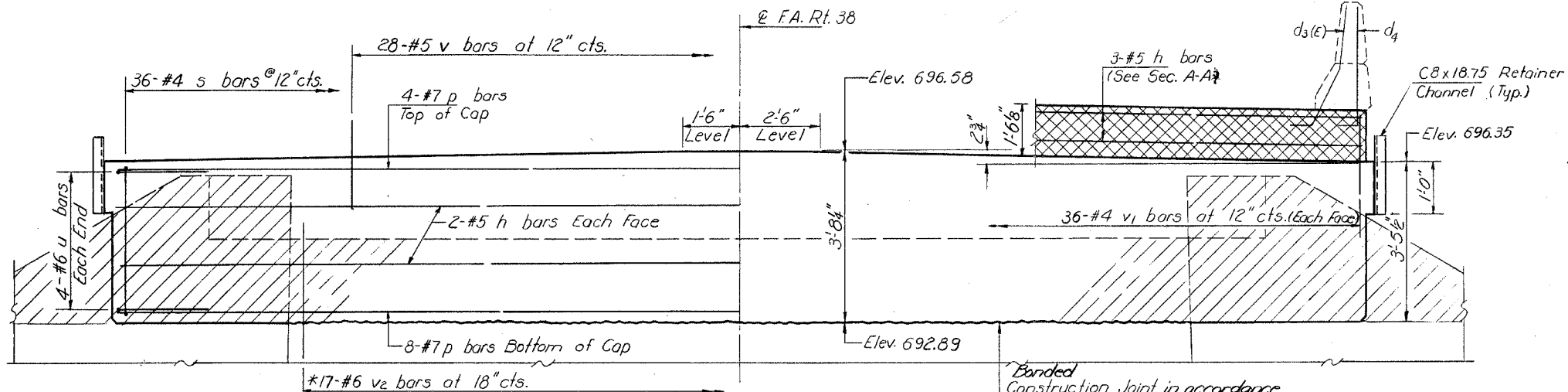


STATE OF ILLINOIS
DEPARTMENT OF TRANSPORTATION

FOR INFORMATIONAL
PURPOSES ONLY

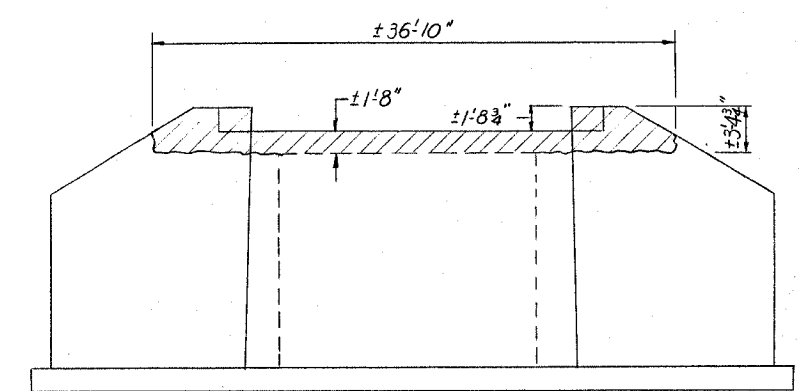
ROUTE NO.	SEC.	COUNTY	TOTAL SHEETS
316	LEE	LEE	26
PROJECT NO.	ALPUB 7 PROJECT		

SHEET NO. 9
13 SHEETS

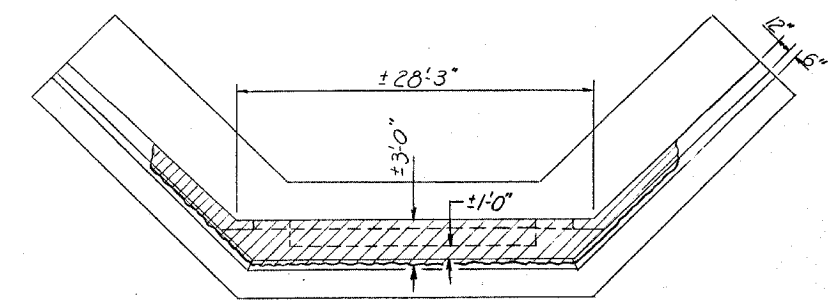


ELEVATION
LOOKING NORTH

*Drill 1" x 1'-0" hole. Fill half full with epoxy before placement of v2 bars. See Special Provisions for Epoxy Grout.

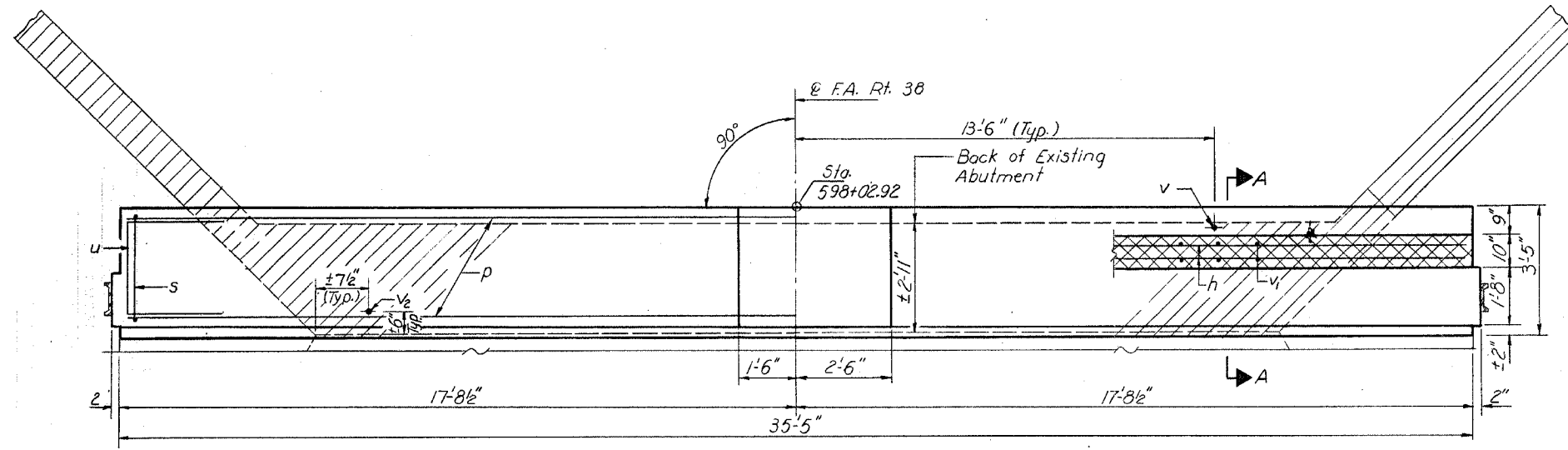


ELEVATION

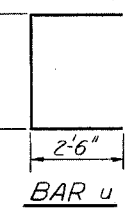
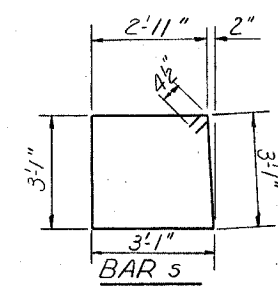


PLAN

CONCRETE REMOVAL DETAILS



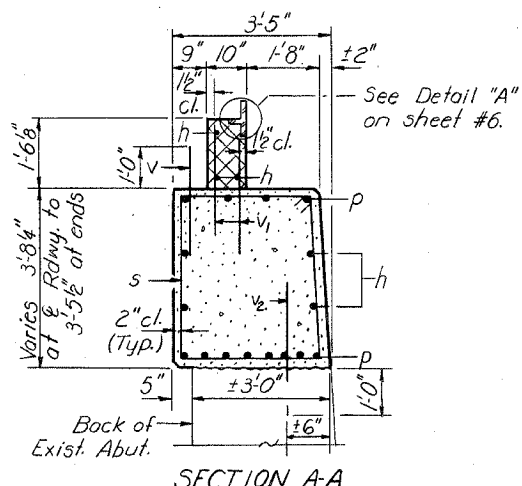
PLAN



BILL OF MATERIAL

Bar	No.	Size	Length	Shape	
h	7	#5	35'-2"	—	
p	12	#7	35'-2"	—	
s	36	#4	12'-11"	□	
u	8	#6	7'-10"	□	
v	28	#5	2'-6"	—	
v1	72	#4	2'-6"	—	
v2	17	#6	2'-6"	—	
Concrete Removal				Cu. Yd.	9
Class X Concrete				Cu. Yd.	15.7
Reinforcement Bars				Pound	1780

NOTES:
Hatched area indicates Concrete Removal. Reinforcement extending into removed area shall be cleaned and incorporated into the new construction.
Cross hatched area shall be poured after beams are in place. Quantity of Class X Concrete included with superstructure on sheet #8.
Reinforcement bars for parapet are billed and detailed on sheet #8.
All edges shall have standard 3/8 inch chamfers except as noted. See sheet #6 for detail of Retainer Channel.



SECTION A-A

DESIGNED: *[Signature]*
CHECKED: *M. Ryann*
DRAWN: *R. Doty*
CHECKED: *MR*

EXAMINED: *[Signature]* FEB 24 1981
PASSED
APPROVED: *[Signature]*
DIRECTOR OF HIGHWAYS

NORTH ABUTMENT
FA. RT. 38 SEC. 102BR-1
LEE COUNTY
STA. 598+6500