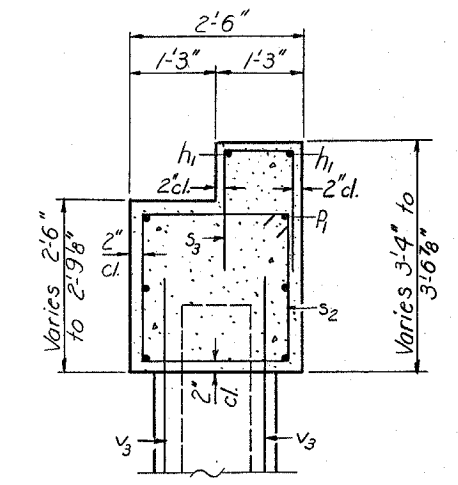
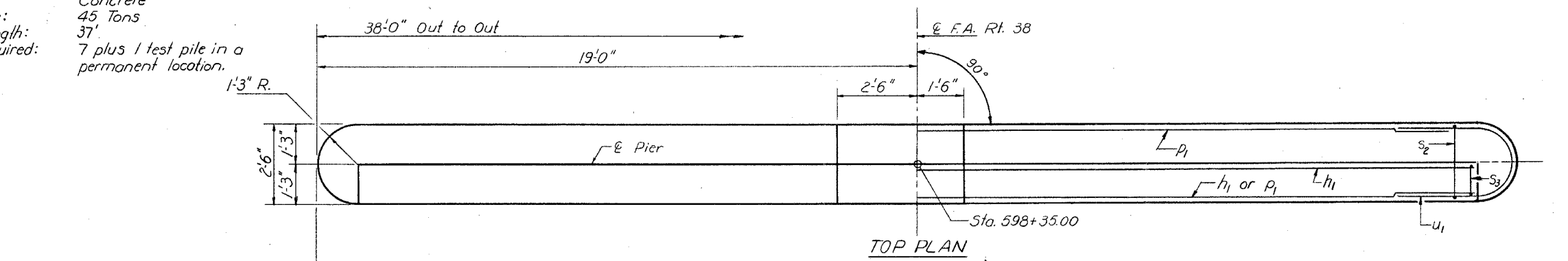


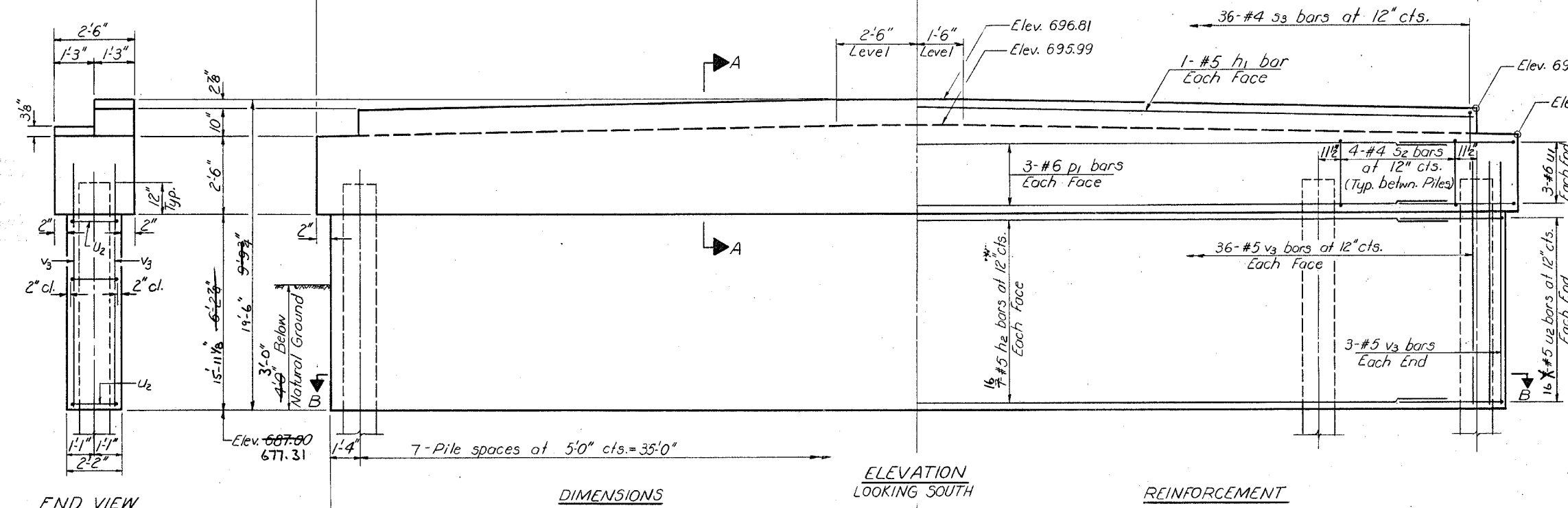
**PILE DATA**

Type: Concrete  
Capacity: 45 Tons  
Est. Length: 37'  
No. Required: 7 plus 1 test pile in a permanent location.



SECTION A-A

Note: All edges shall have standard 3/8" chamfers.



ELEVATION  
LOOKING SOUTH

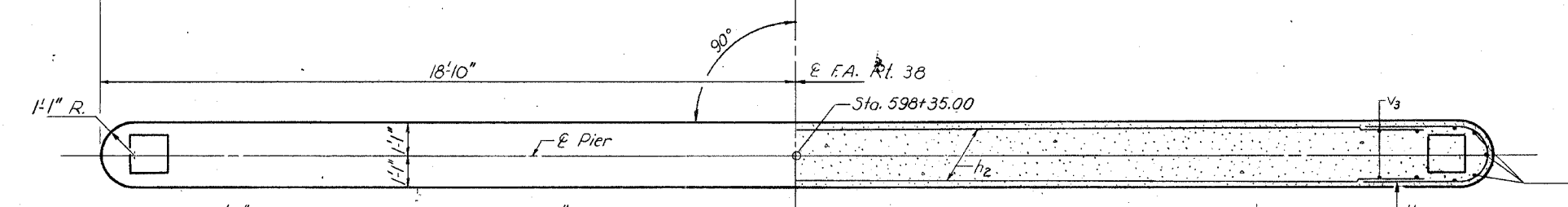
END VIEW

DIMENSIONS

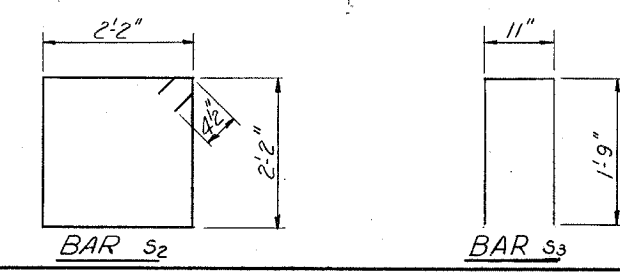
REINFORCEMENT

**BILL OF MATERIAL**

Bar	No.	Size	Length	Shape
h1	2	#5	35'-3"	—
h2	32-14	#5	33'-6"	—
p1	6	#6	34'-8"	—
s2	28	#4	9'-5"	□
s3	36	#4	4'-5"	□
u1	6	#6	8'-3"	—
u2	32-14	#5	7'-11"	—
v3	78	#5	7'-9"	—
Class X Concrete		Cu. Yd.	26.2	51.2
Reinforcement Bars		Pound	1900	3550
Concrete Piles		Lin. Ft.	259	
Test Piles Concrete		Each	1	



SECTION B-B



DESIGNED: *[Signature]*  
CHECKED: *M. Ryan*  
DRAWN: *R. Doty*  
CHECKED: *MR*

EXAMINED: *[Signature]* 10/24/81  
PASSED  
APPROVED: *[Signature]*

PIER 1  
F.A. RT. 38 SEC. 102 BR-1  
LEE COUNTY  
STA. 598+65.00