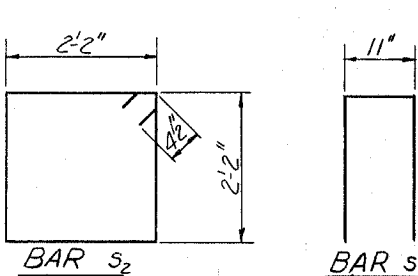
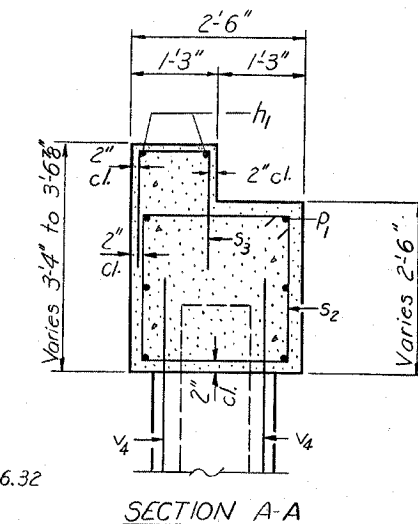
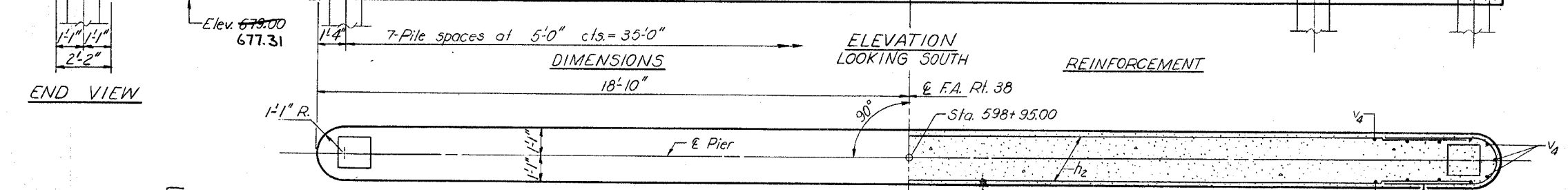
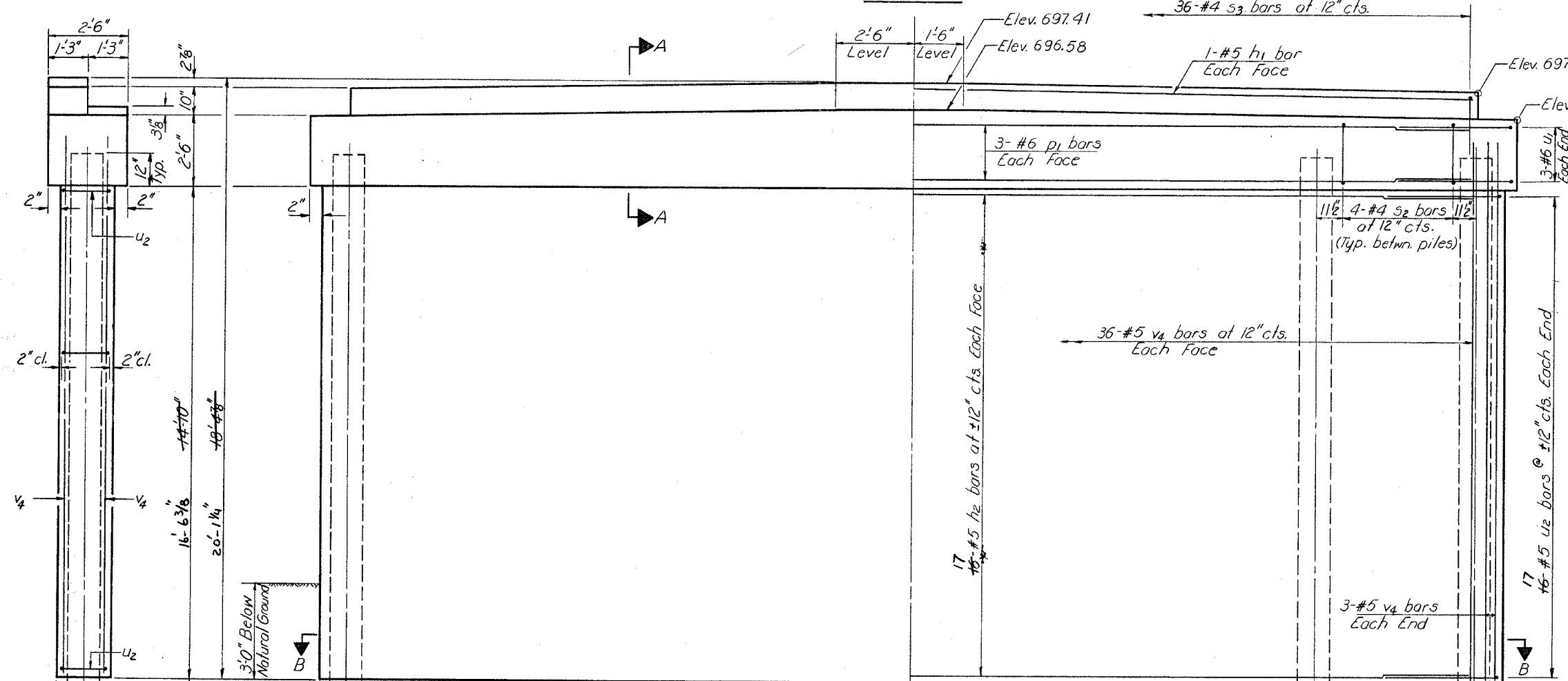
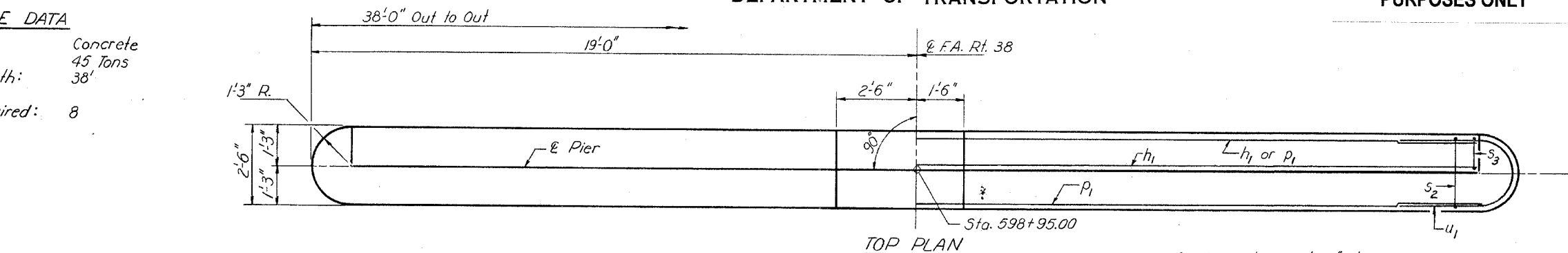


PILE DATA
Type: Concrete
Capacity: 45 tons
Est. Length: 38'
No. Required: 8



BILL OF MATERIAL

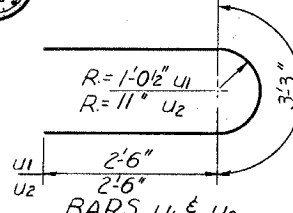
Bar	No.	Size	Length	Shape
h1	2	#5	35'-3"	—
h2	3234	#5	33'-6"	—
p1	6	#6	34'-8"	—
s2	28	#4	9'-5"	□
s3	36	#4	4'-5"	□
u1	6	#6	8'-3"	U
u2	3234	#5	7'-11"	U
v4	78	#5	18'-0"	—
			16'-5"	—

Class X Concrete	Cu. Yd.	48.4	52.7
Reinforcement Bars	Pound	3460	3680
Concrete Piles	Lin. Ft.	304	

DESIGNED *[Signature]*
CHECKED *[Signature]*
DRAWN *[Signature]*
CHECKED *[Signature]*

EXAMINED *[Signature]* FEB 24 1981
PASSED
APPROVED

Note:
All edges shall have standard 3/8" chamfers.



PIER 2
F.A. RT. 38 SEC. 102BR-1
LEE COUNTY
STA. 598+65.00