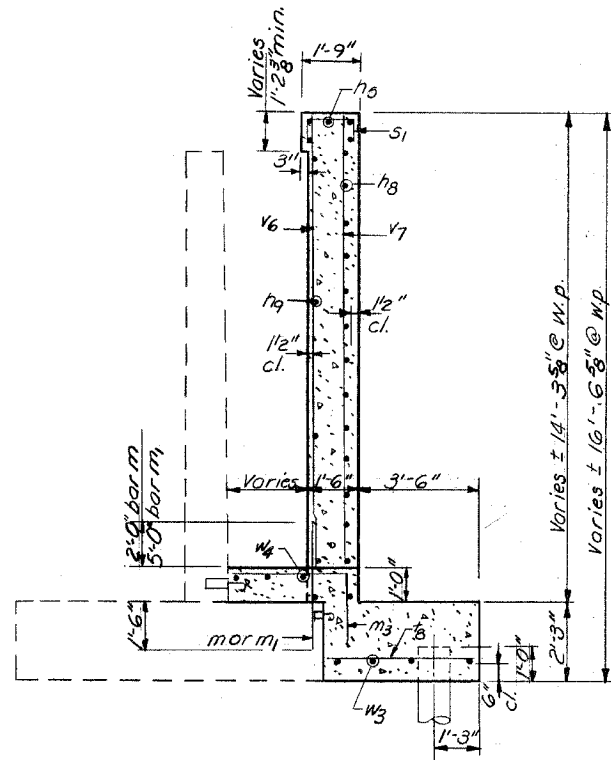
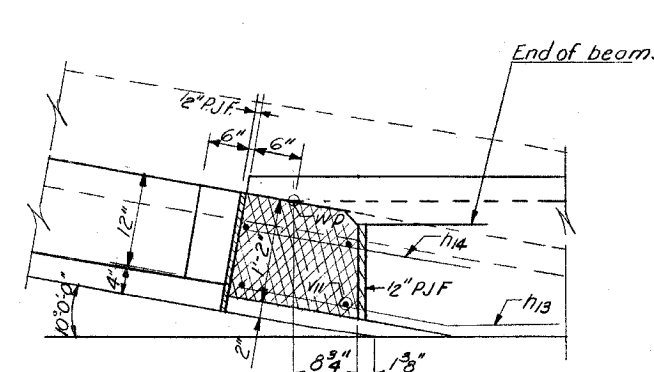


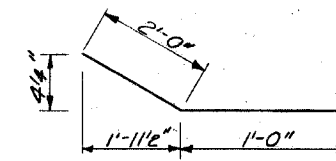
SECTION E-E



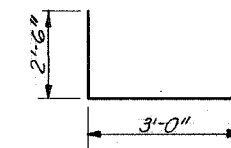
SECTION F-F



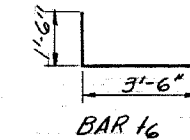
DETAIL B



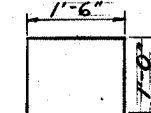
BAR h13



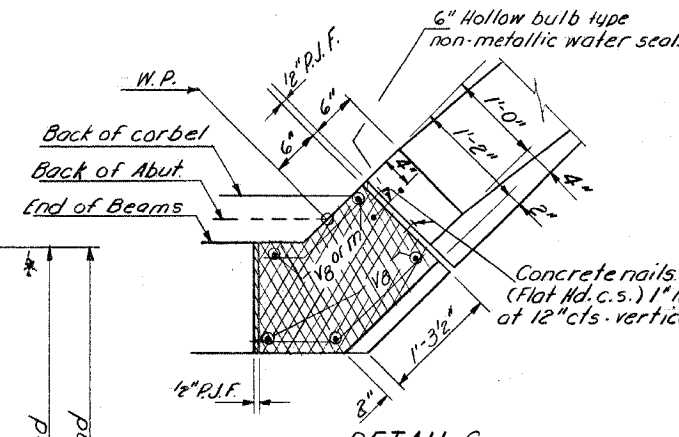
BAR m13



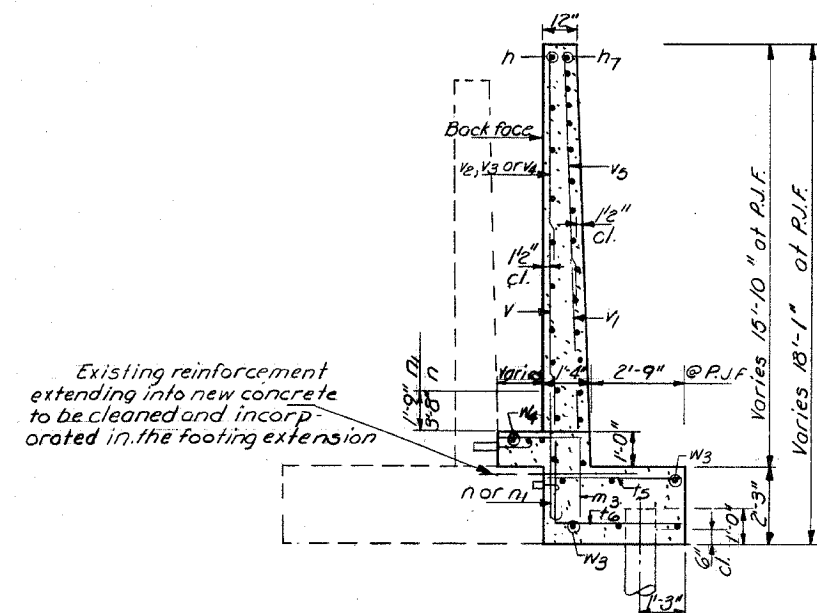
BAR t6



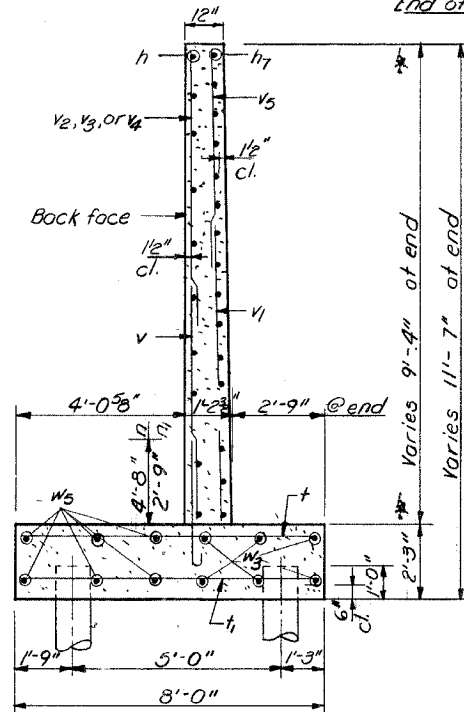
BAR s1



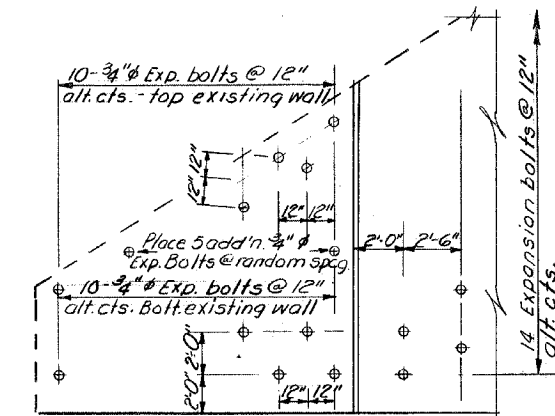
DETAIL C



SECTION G-G



SECTION H-H



EXPANSION BOLT PLACEMENT - S.W. CORNER

SOUTH ABUTMENT
BILL OF MATERIAL

Bar	No.	Size	Length	Shape	Bar	No.	Size	Length	Shape
h	10	#4	18'-0"		h	12	#5	7'-9"	
h1	18	#4	3'-0"		h1	14	#5	5'-3"	
h2	10	#4	2'-0"		h2	13	#4	3'-9"	
h3	5	#5	28'-0"		h3	16	#7	5'-0"	
h4	5	#5	17'-0"		h4	6	#6	5'-0"	
h5	16	#5	18'-0"						
h6	14	#5	8'-3"		v	19	#7	6'-3"	
h7	6	#4	6'-9"		v1	11	#8	12'-0"	
h8	14	#4	15'-5"		v2	7	#5	6'-3"	
h9	16	#5	15'-5"		v3	11	#5	7'-3"	
h10	14	#4	15'-5"		v4	11	#5	9'-6"	
h11	16	#5	15'-5"		v5	4	#4	5'-0"	
h12	14	#5	5'-6"		v6	6	#6	13'-1"	
h13	18	#4	3'-0"		v7	3	#8	13'-1"	
h14	10	#4	2'-9"		v8	5	#6	14'-6"	
					v9	10	#6	7'-3"	
m	8	#8	4'-6"		v10	6	#8	14'-0"	
m1	5	#8	7'-6"		v11	4	#5	15'-6"	
					v12	6	#5	8'-0"	
m4	5	#5	2'-6"		w3	6	#5	28'-6"	
m13	15	#6	5'-6"		w4	3	#5	10'-0"	
					w5	6	#5	10'-9"	
n	24	#6	7'-1"		w6	4	#5	9'-3"	
n1	19	#8	5'-5"		w7	10	#5	5'-9"	
Concrete Removal				Cu. Yds. 3	Class. X Concrete				Cu. Yds. 46.3
Untreated Piles				Lin. Ft. 280	Expansion Bolts				#8 Ea. 99
Reinforcement Bars				Lbs. 4330					

DESIGNED J.M. Patel
CHECKED J.B. Nelson
DRAWN Bev Robinson
CHECKED J.B.N.

EXAMINED [Signature]
PASSED [Signature]
APPROVED [Signature]

SOUTH ABUTMENT DETAILS
S.B.I. RT. 89 SEC. 102-10
LEE COUNTY
STA. 289+50