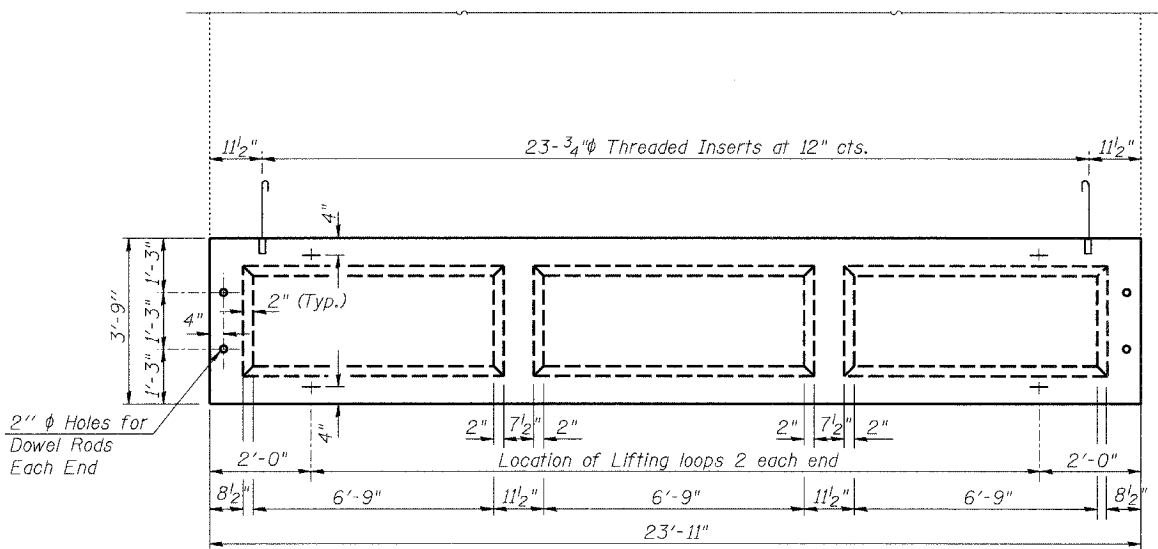
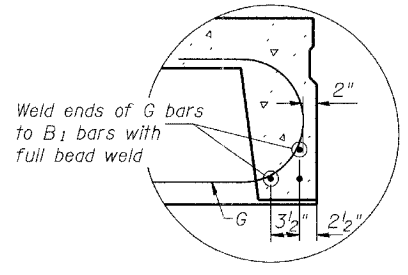


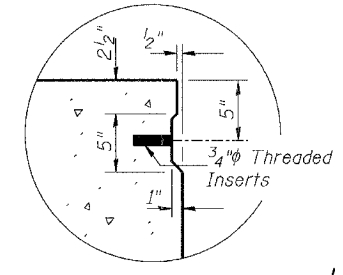
Note:
Tack welding of stirrups to bottom longitudinal reinforcement bars will not be permitted except as otherwise authorized in writing by the Engineer.



TYPICAL PLAN OF BEAM

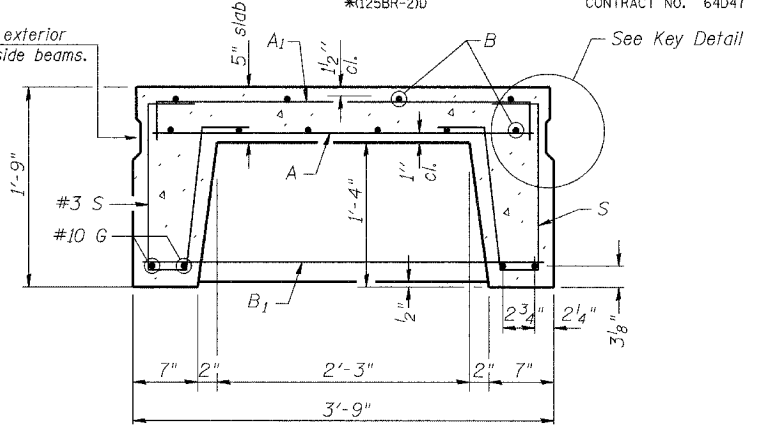


DETAIL A

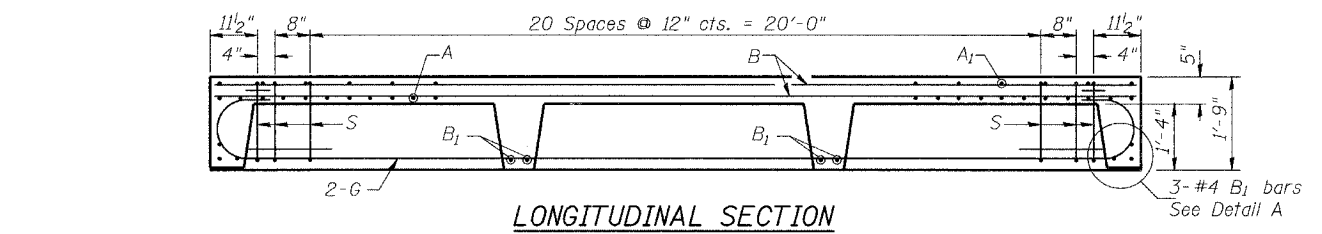


KEY DETAIL

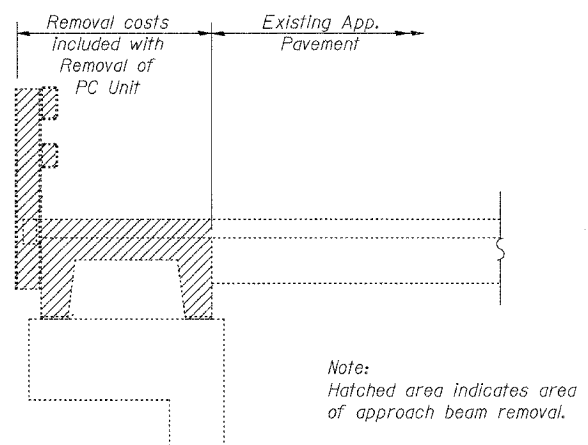
1/2" FABRIC BEARING PAD
(4 Req'd. per beam)



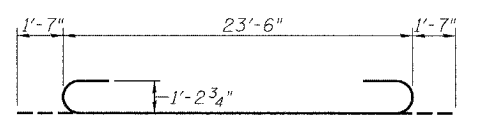
SECTION THRU PRECAST UNIT



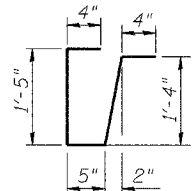
LONGITUDINAL SECTION



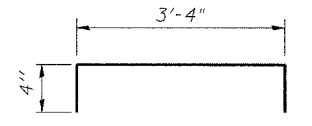
TYPICAL APPROACH REMOVAL SECTION



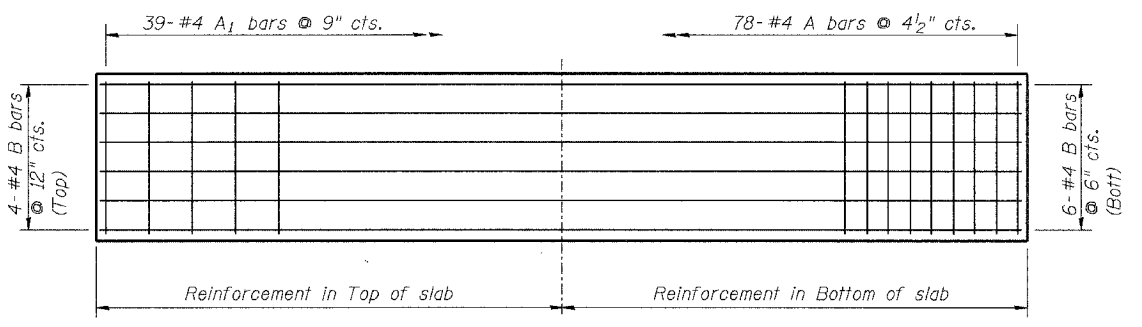
BAR G



BAR S

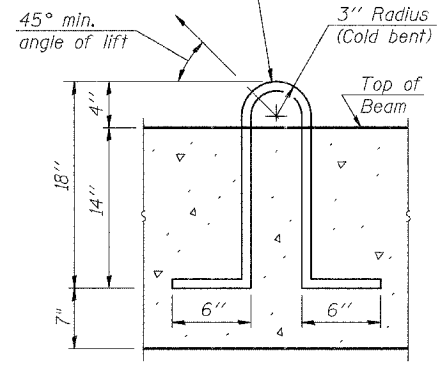


BAR A1



PLAN
Showing Slab Reinforcement

2-1/2" Strands/Loop, 2 Ea. End Ea. Beam. Loop shall be burned off after beams have been erected. Strands shall conform to the requirements of AASHTO M 203.



LIFTING LOOP DETAIL

Approved alternate may be substituted for the above

BILL OF MATERIAL

Item	Unit	Quantity
Precast Concrete Bridge Slab	Sq. Ft.	359
Removal of Existing Precast Unit	Sq. Ft.	359

APPROACH DETAILS
F.A.P. 22 (ILL 78) OVER
COAL CREEK
SECTION (125BR-2)D
HENRY COUNTY
STATION 680+94.38
STR. NO. 037-0130

HUTCHISON ENGINEERING, INC.
JACKSONVILLE, ILLINOIS

Rev: _____ Date: _____

DESIGNED	BAN
CHECKED	JOH
DRAWN	TC
CHECKED	BAN