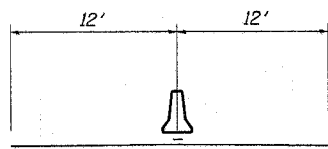


F.A.P. RTE.	SECTION	COUNTY	TOTAL SHEETS	SHEET NO.
301	(2HB)M	WINNEBAGO	13	5
STA.		TO STA.		
FED. ROAD DIST. NO.		ILLINOIS FED. AID PROJECT		

# Traffic Control Plan – Painting



**Cross Section**

Traffic Control & Protection Std 701402

	L	Sum
Entire Project	1	
<b>Total</b>	<b>1</b>	

Temporary Concrete Barrier

	Foot
Standard 701321	300
<b>Total</b>	<b>300</b>

Relocate Temporary Concrete Barrier

	Foot
Taper (Closure 1 to Closure 2)	150
Closure 2 to Closure 3	300
Taper (Closure 3 to Closure 4)	150
<b>Total</b>	<b>600</b>

Temporary Impact Attenuators

	Each
Stage I	1
<b>Total</b>	<b>1</b>

Relocate Temporary Impact Attenuators

	Each
Stage II	1
Stage III	1
Stage IV	1
<b>Total</b>	<b>3</b>

Traffic Control & Protection Std 701411

	Each
Entire Project	2
<b>Total</b>	<b>2</b>

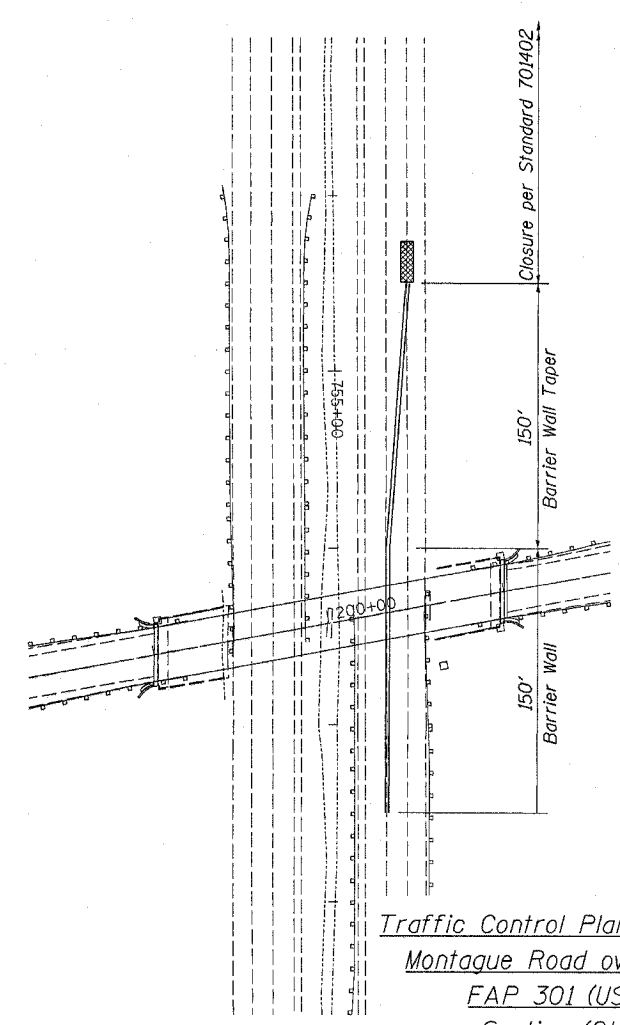
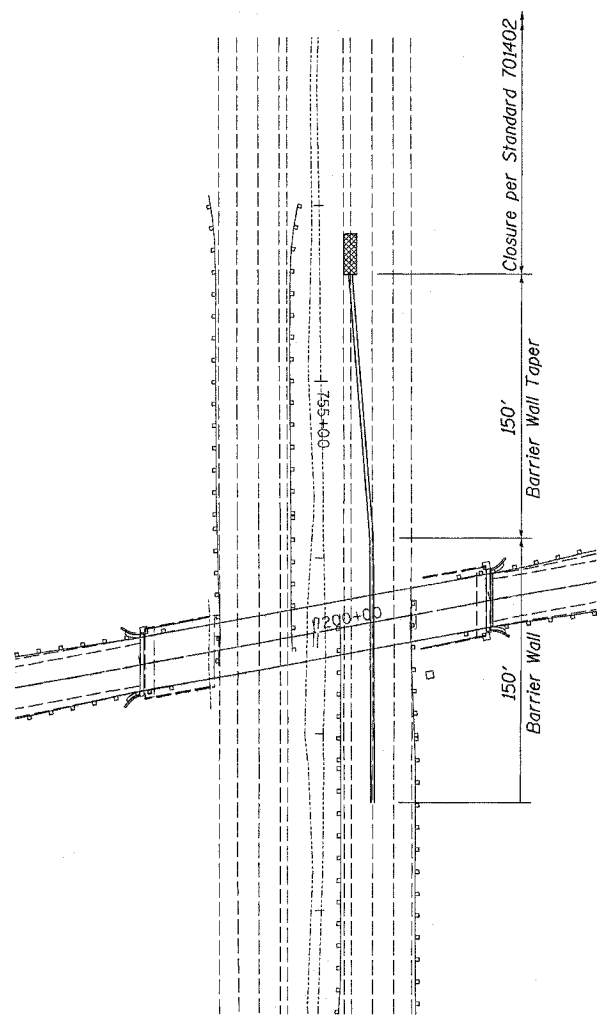
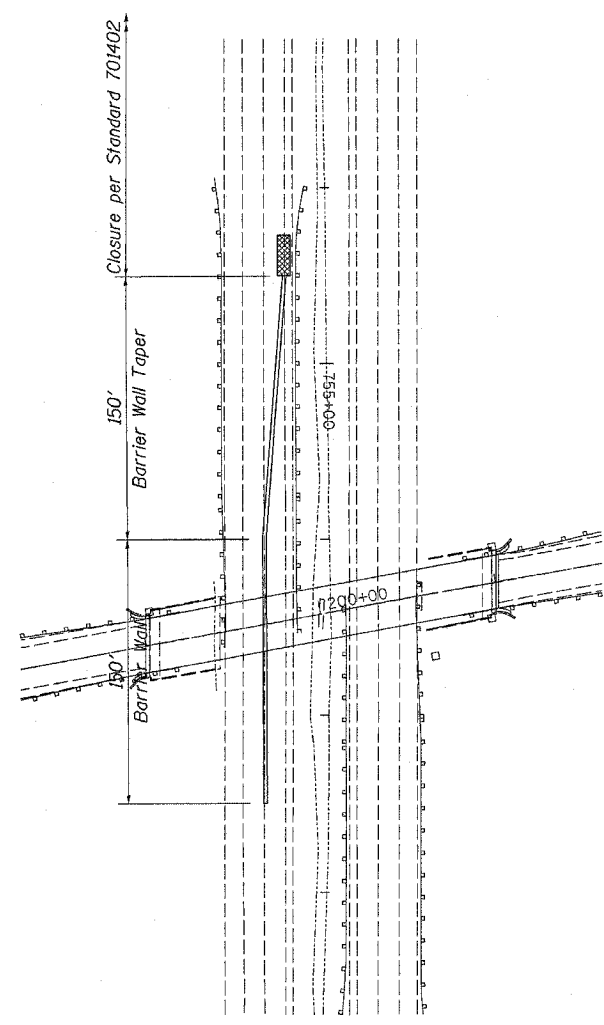
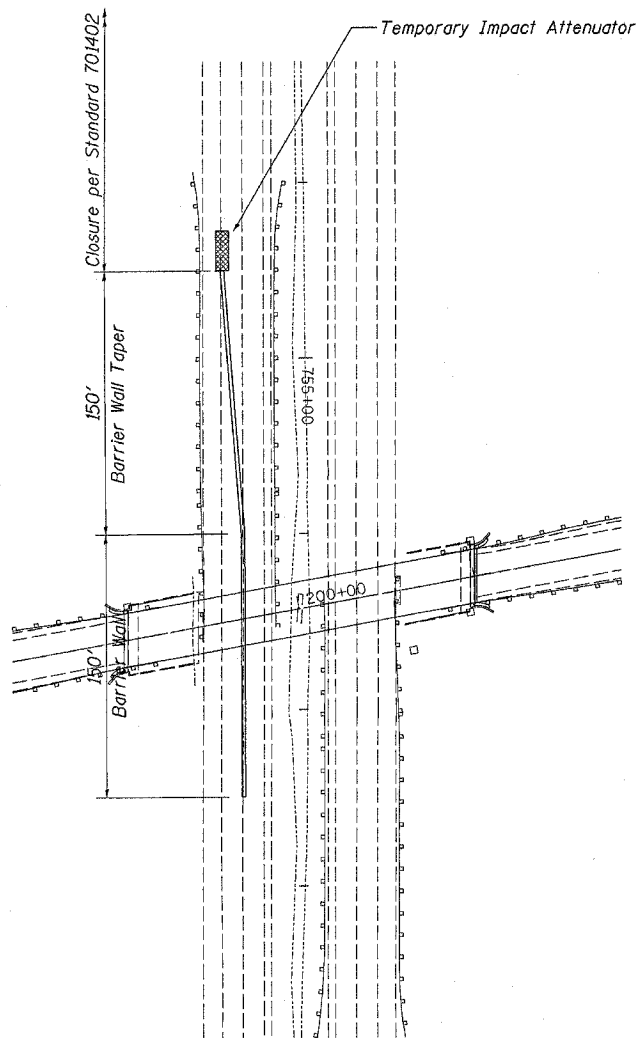
**Lane Closure 1**

**Lane Closure 2**

**Lane Closure 3**

**Lane Closure 4**

Note: Place the taper for Standard 701402 before the ramp begins and extend the tangent section through the ramp in conjunction with standard 701411.



Plot Date = Mon, Jun 04 14:52:23 2007  
 Plot Scale = 5/8" = 1'-0"  
 User Name = jmkdj

Traffic Control Plan - Painting  
 Montague Road over US 20  
 FAP 301 (US 20)  
 Section (2HB)M  
 Winnebago County  
 Structure Number 101-0094