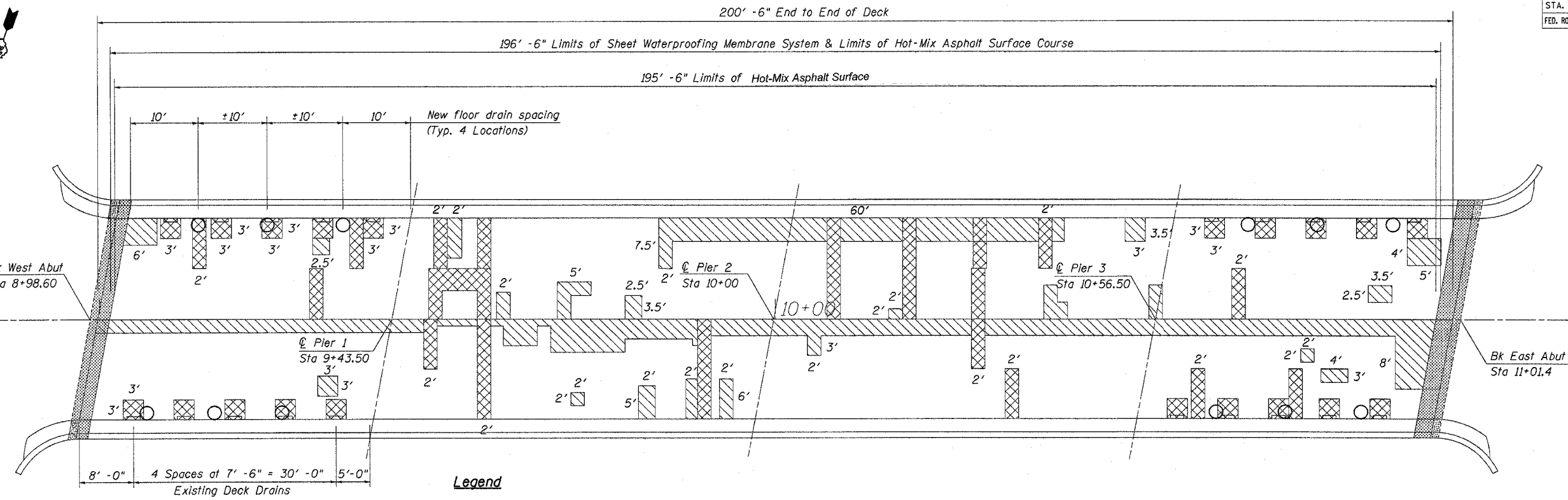


F.A.P. RTE.	SECTION	COUNTY	TOTAL SHEETS	SHEET NO.
301	(2)HBIM	WINNEBAGO	13	8
STA. _____		TO STA. _____		
FED. ROAD DIST. NO. _____		ILLINOIS FED. AID PROJECT		



Legend

- Concrete Removal
- Deck Slab Repair (Partial Depth)
- Deck Slab Repair (Full Depth)

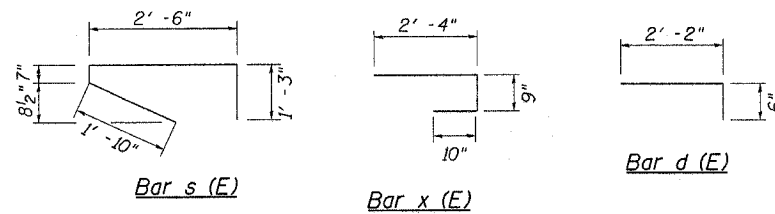
Note: Limits of Protect Shield shall include all areas of Deck Slab Repair (Full Depth) in Spans 2 and 3 or as directed by the Engineer.

Deck Plan

Bill of Material

Bar	No.	Size	Length	Shape
a (E)	20	#6	16' - 8"	—
a ₁ (E)	20	#6	15' - 8"	—
d (E)	12	#5	2' - 8"	—
h (E)	12	#6	14' - 10"	—
s (E)	20	#4	5' - 10"	—
x (E)	64	#5	3' - 11"	—

ITEM	UNIT	QUANTITY
HOT-MIX ASPHALT SURFACE COURSE, MIX D N50	TON	94
HOT-MIX ASPHALT SURFACE REMOVAL, DECK	SQ YD	652
DECK SLAB REPAIR (PARTIAL)	SQ YD	112
DECK SLAB REPAIR (FULL DEPTH, TYPE I)	SQ YD	77
DECK SLAB REPAIR (FULL DEPTH, TYPE II)	SQ YD	20
CONCRETE REMOVAL	CU YD	12.2
CONCRETE SUPERSTRUCTURE	CU YD	11.8
REINFORCEMENT BARS, EPOXY COATED	POUND	1610
BAR SPLICERS	EACH	26
SHEET WATERPROOFING MEMBRANE SYSTEM	SQ YD	655
PREFORMED JOINT STRIP SEAL	FOOT	72
FLOOR DRAINS	EACH	12



Notes

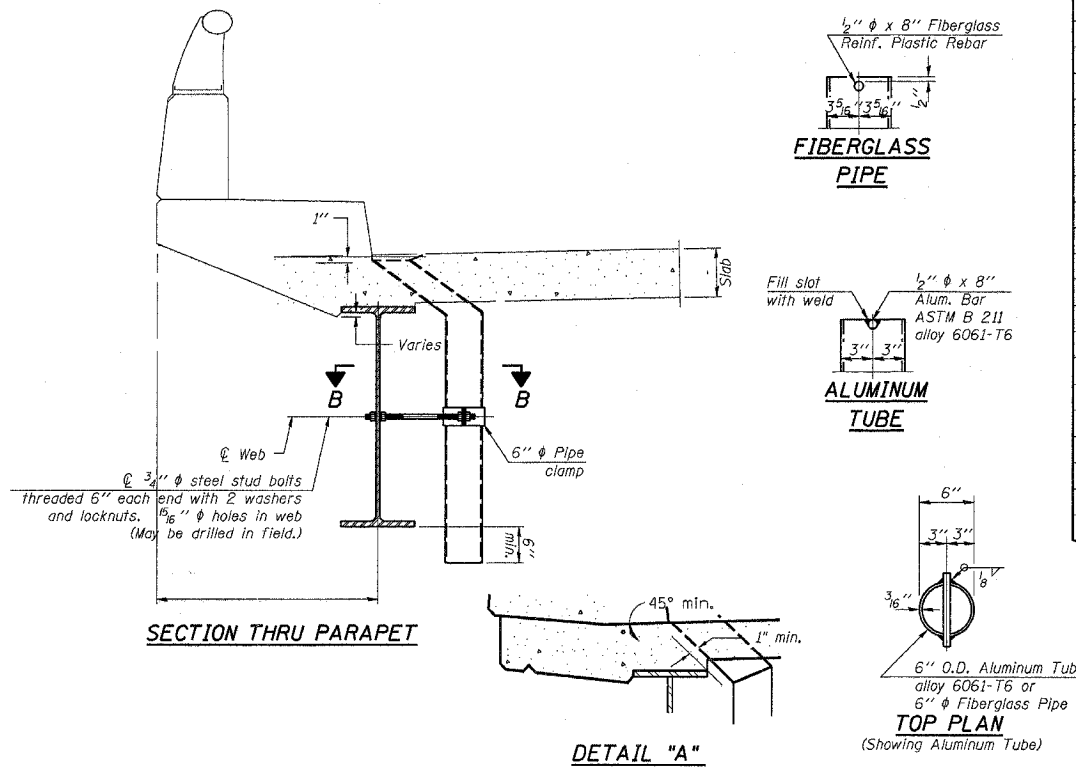
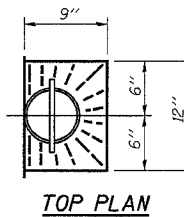
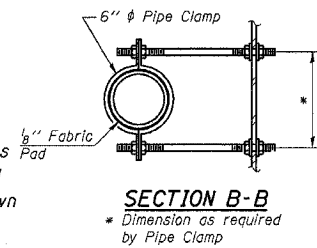
Date of survey: 6/13/05

The plan quantities for Deck Slab Repair (Partial and Full Depth) are estimated quantities from a deck survey by others. The areas shown on the deck repair plans are potential areas of Deck Slab Repair. The Deck Slab Repair quantities in Bills of Material are included as contingencies to be used as directed by the Engineer during construction. The actual locations and quantity of Deck Slab Repair on all structures shall be determined by the resident engineer in the field after removal of the existing wearing surface. Actual repair locations shall be shown on the as-built plans.

Existing deck drains to be removed with full depth patching operations. Cost included with Deck Slab Repair (Full Depth).

The exterior surfaces of the floor drains shall be painted with the finish coat as specified in the special provisions for Cleaning and Painting New Metal Structures. The exterior surfaces of the drains shall be cleaned according to Steel Structures Painting Council's Spec. SSPC-SP1 prior to painting.

Fiberglass pipe shall conform to ASTM D 2996, with short-time rupture strength hoop tensile stress of 30,000 p.s.i. minimum.



PLOT DATE = Mon Jun 04 14:42:55 2007
 FILE NAME = D:\Sub-CADD\Plans\Winnebago County\1010094\48095.dgn
 USER = JLR
 USER NAME = JLR

Deck Repair Plan
 Montague Road over US 20
 FAP 301 (US 20)
 Section (2)HBIM
 Winnebago County
 Structure Number 101-0094