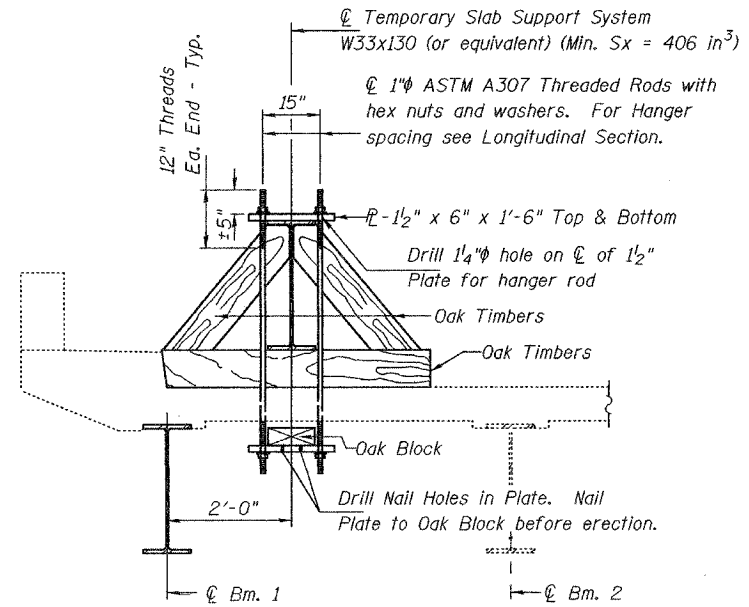


STATE OF ILLINOIS
DEPARTMENT OF TRANSPORTATION

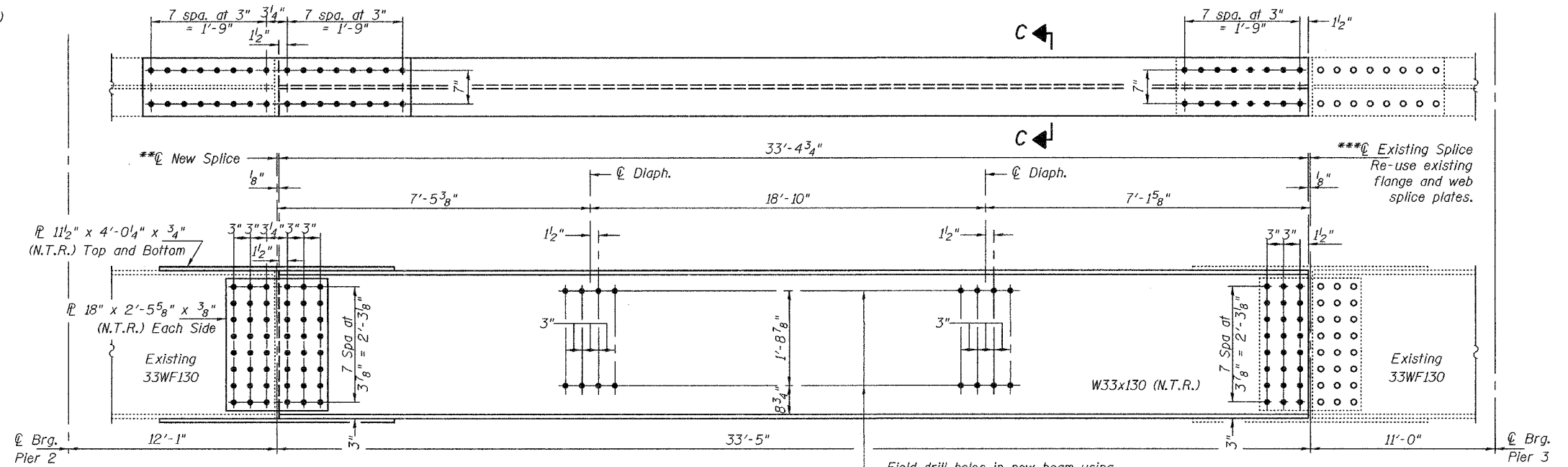
ROUTE NO.	SECTION	COUNTY	TOTAL SHEETS	SHEET NO.
		Winnebago	13	13
FED. ROAD DIST. NO. 7	ILLINOIS	FED. AID PROJECT		

SHEET NO. 2
2 SHEETS

Contract Number: 64D49

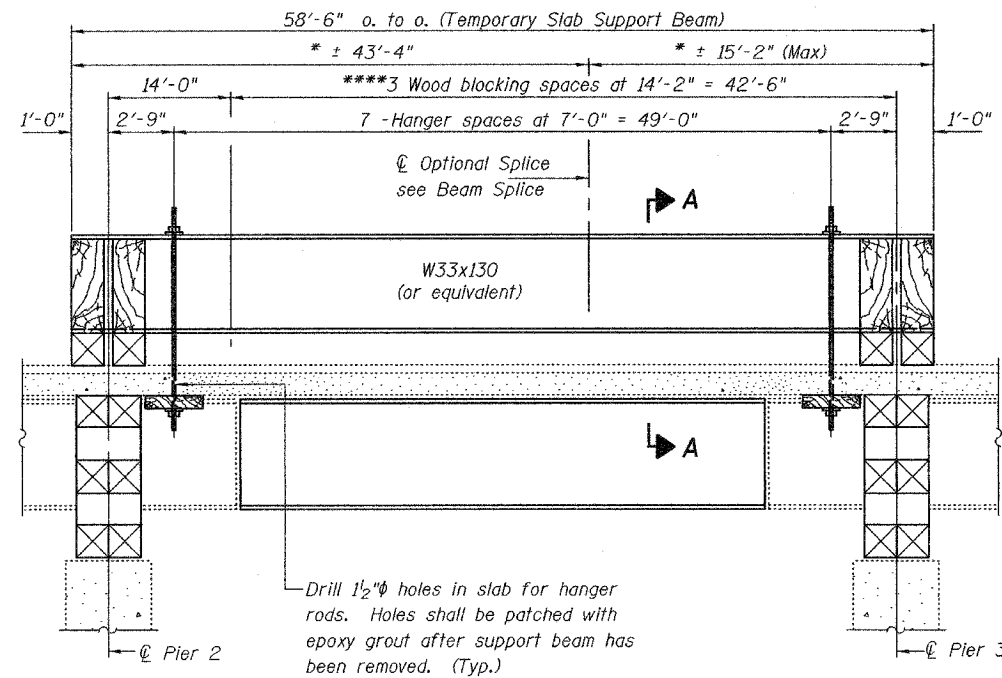


SECTION A-A



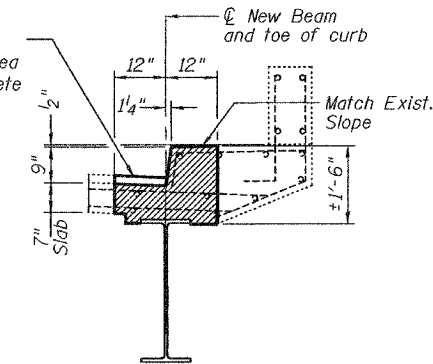
ELEVATION BEAM

Field drill holes in new beam using holes in diaphragm L's as a template.



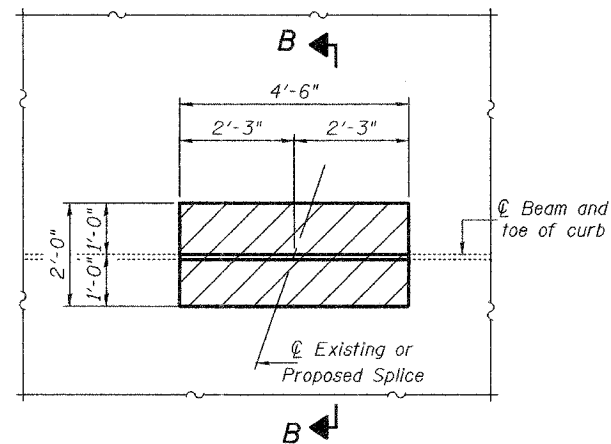
LONGITUDINAL SECTION
SUGGESTED TEMPORARY SLAB SUPPORT SYSTEM

2 1/2" HMA. Cost of HMA surface removal in this area shall be included in Concrete Removal.



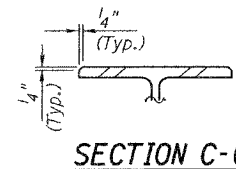
SECTION B-B

Note:
Natural camber of new beam shall be placed upward for fabrication.



TYPICAL CONCRETE SURFACE
REMOVAL AND REPLACEMENT

Hatched areas indicate concrete sections to be removed and replaced. Perimeters of concrete removal areas shall be saw cut 3/4" prior to the removal of concrete. Reinforcement shall be cut only if required for fitting bolts. Cut reinforcement shall be spliced as directed by the Engineer. Cost shall be included with Concrete Removal.



SECTION C-C

* These dimensions may vary for available beams in stock.
** Use holes in new splice as a template for drilling holes in existing beam.
*** Use holes in existing splice as a template for drilling holes in new beam.
**** Wood blocking between supports to be placed after support beam deflects under its own weight.

DESIGNED	S.J.B.
CHECKED	A.J.B.
DRAWN	Drew Christopher
CHECKED	S.J.B., A.J.B.

June 21, 2007
EXAMINED
PASSED

REP-2 1-27-2000

BEAM DETAILS
F.A. RT. 194
WINNEBAGO COUNTY
SN 101-0094