

F.A. RTE.	SECTION	COUNTY	TOTAL SHEETS	SHEET NO.
*	**	KANKAKEE	48	6
STA.		TO STA.		
FED. ROAD DIST. NO. - ILLINOIS FED. AID PROJECT				

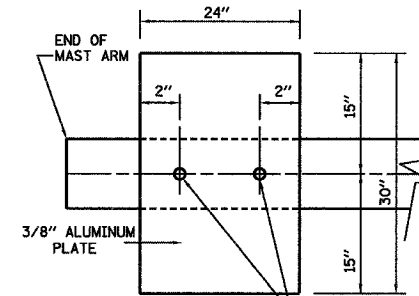
- FAP 840 (IL 50) & FAP 330 (IL 17)
- (139 Z, 11) TS-1 & (1) TS-2

ELECTRICAL LOAD FOR INTERSECTION				
STREET NAME	COMPONENT	NUMBER	WATTAGE EACH	BURNTIME %
ILLINOIS ROUTE 17 (COURT STREET)	RED	5	10	68
	YELLOW	5	19	5
	GREEN	5	14	27
	YELLOW ARROW-LT.	2	9	5
	GREEN ARROW-LT.	2	3.4	11
		2	8	95
		2	6	5
NELSON AVENUE	RED	2	10	74
	YELLOW	2	19	5
	GREEN	2	14	21
		2	8	95
		2	6	5
TRAFFIC SIGNAL CABINET	CONTROLLER	1	6	100
	VEHICLE DETECTORS	13	4	100
	EMERGENCY VEHICLE PREEMPT	3	--	--

AGENCY RESPONSIBLE FOR TRAFFIC SIGNAL ENERGY CHARGES:
CITY OF KANKAKEE

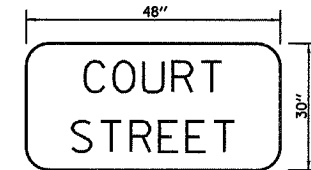
NOTE:

DAMPENING DEVICE SHALL CONSIST OF A 24" X 30" TYPE 1, UNPAINTED ALUMINUM SIGN STOCK MOUNTED HORIZONTALLY ON TOP OF MAST ARM WITH THE 30" LENGTH PERPENDICULAR TO THE ARM. COST OF THE DAMPENING DEVICE IS INCLUDED IN THE MAST ARM PAY ITEM.



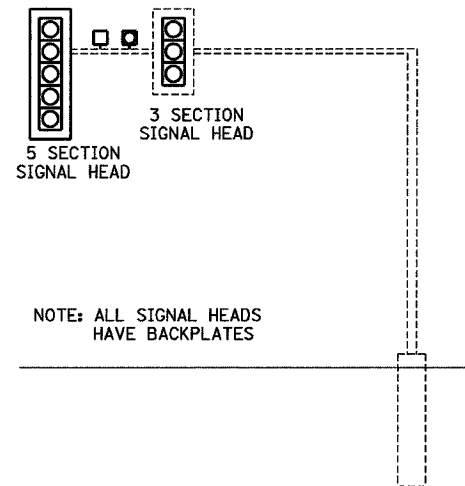
2-5/8" STAINLESS STEEL BOLTS THROUGH STAINLESS STEEL BANDING
NOTE:
MOUNT DAMPENING PLATE TO END OF EACH TRAFFIC SIGNAL MAST ARM.

DAMPENING PLATE DETAIL - TOP VIEW

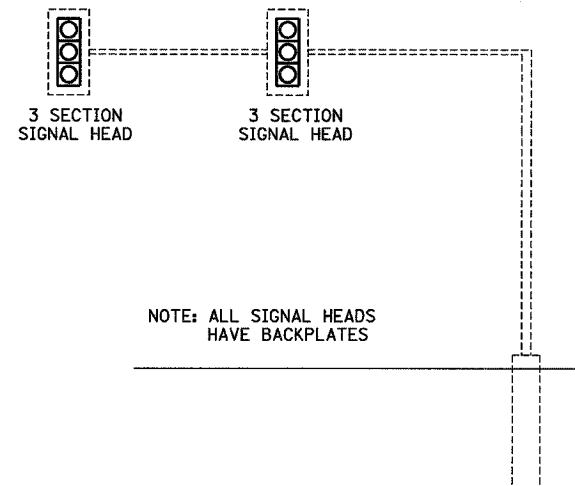


TYPE A SHEETING REQUIRED
8" D SERIES LETTERS
1 SIGNS REQUIRED = 10.0 SQ. FT. EACH
= 10.0 SQ. FT. TOTAL

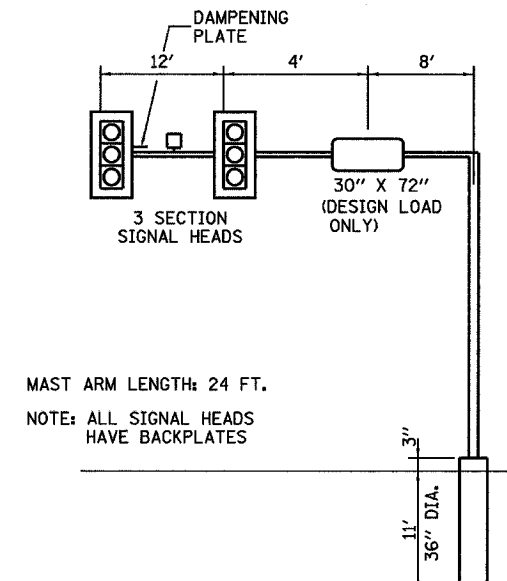
THIS STREET NAME SIGN SHALL BE PLACED ON THE MAST ARMS PARALLEL WITH ILL RTE 17 (COURT STREET)



WESTBOUND



EASTBOUND



NORTHBOUND

NORTHWEST CORNER
NOT TO SCALE

SOUTHEAST CORNER
NOT TO SCALE

NORTHEAST CORNER
NOT TO SCALE

ILLINOIS ROUTE 17 (COURT STREET) / NELSON AVENUE

PLOT DATE = 4/07
FILE NAME = teds.dgn
PLOT SCALE = 1" = 20'
USER NAME = ARR

REVISIONS	
NAME	DATE
ARR	4/07

ILLINOIS DEPARTMENT OF TRANSPORTATION
TRAFFIC SIGNAL DETAILS
FAP 330 (IL 17)-COURT STREET
AND NELSON AVENUE
SECTION (139 Z, 11) TS-1 & (1) TS-2
KANKAKEE COUNTY

SCALE: VERT. 1" = 20'
HORIZ. 1" = 20'
DATE 6/05

DRAWN BY ARR
CHECKED BY JLS