

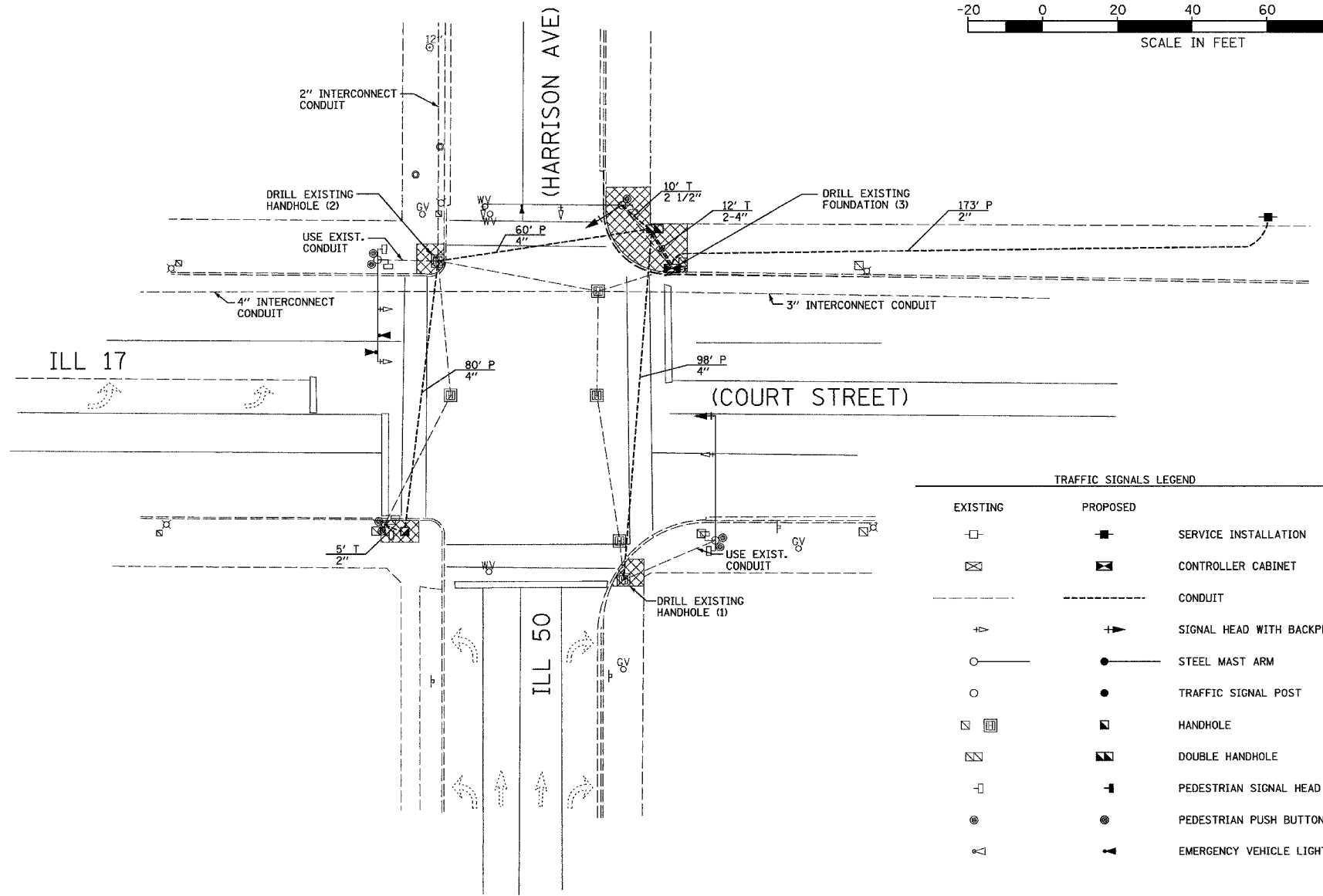
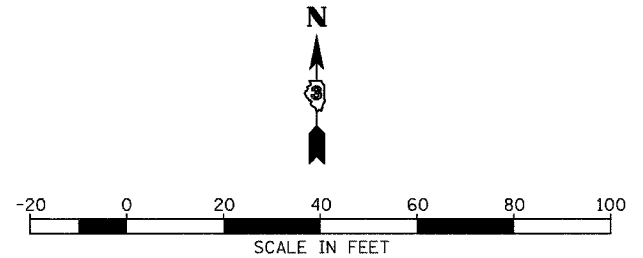
F.A.P. RTE.	SECTION	COUNTY	TOTAL SHEETS	SHEET NO.
.	..	KANKAKEE	48	11

STA.	TO STA.
FED. ROAD DIST. NO.	ILLINOIS FED. AID PROJECT

- FAP 840 (IL 50) & FAP 330 (IL 17)
- (139 Z, 11) TS-1 & (1) TS-2

CONSTRUCTION NOTES:

- REMOVE AND REPLACE SERVICE ON EXISTING POLE. INSTALL NEW CONDUIT BY DIRECTIONAL BORING.
- REPLACE 4-SECTION HEAD ON MAST ARM IN SOUTHEAST CORNER WITH 5-SECTION LED HEAD.
- REMOVE THE 4-SECTION HEAD ON THE LIGHT POLE IN THE NORTHEAST CORNER. REPLACE WITH A 5-SECTION BRACKET MOUNTED LED HEAD ON THE MAST ARM IN THE NORTHEAST CORNER.
- RETROFIT THE FIVE (5) 3-SECTION HEADS WITH LED HEADS.
- RETROFIT THE EIGHT (8) PEDESTRIAN HEADS WITH LED SYMBOL HEADS.
- RELOCATE PUSH-BUTTON FROM CONTROLLER CABINET TO THE MAST ARM IN THE NORTHEAST CORNER.
- REMOVE EXISTING CABLE AND INSTALL NEW CABLE IN NEW CONDUIT EXCEPT WHERE NOTED. LEAVE INTERCONNECT CABLE IN PLACE.
- REMOVE AND REPLACE CONTROLLER MODIFY EXISTING CABINET.
- INSTALL UNINTERRUPTIBLE POWER SUPPLY.
- REMOVAL OF THE FOLLOWING ITEMS SHALL BE PAID FOR AS REMOVE EXISTING TRAFFIC SIGNAL EQUIPMENT:
 - 1 EACH - CONTROLLER
 - 1 EACH - ELECTRICAL SERVICE
 - 1 EACH - SIGNAL HEAD, 1-FACE, 4-SECTION, MAST ARM MOUNTED
 - 1 EACH - SIGNAL HEAD, 1-FACE, 4-SECTION, BRACKET MOUNTED



SCHEDULE OF QUANTITIES

ITEM NO.	DESCRIPTION	UNIT	TOTAL QUANTITY	①	⑤
42400100	PORTLAND CEMENT CONCRETE SIDEWALK, 4 INCH	SQ FT	554	554	--
42400800	DETECTABLE WARNINGS	SQ FT	62	62	--
44000600	SIDEWALK REMOVAL	SQ FT	554	554	--
80500200	SERVICE INSTALLATION, TYPE B	EACH	1	1	--
81012600	CONDUIT IN TRENCH, 2" DIA., PVC	FOOT	5	5	--
81012700	CONDUIT IN TRENCH, 2 1/2" DIA., PVC	FOOT	10	10	--
81013000	CONDUIT IN TRENCH, 4" DIA., PVC	FOOT	24	24	--
81021330	CONDUIT PUSHED, 2" DIA., PVC	FOOT	173	173	--
81021370	CONDUIT PUSHED, 4" DIA., PVC	FOOT	238	238	--
81400700	HANDHOLE, PORTLAND CEMENT CONCRETE	EACH	1	1	--
81400720	DOUBLE HANDHOLE, PORTLAND CEMENT CONCRETE	EACH	1	1	--
81900200	TRENCH AND BACKFILL FOR ELECTRICAL WORK	FOOT	27	27	--
85700505	FULL ACTUATED CONTROLLER IN EXISTING CABINET, SPECIAL	EACH	1	1	--
86200300	UNINTERRUPTIBLE POWER SUPPLY, EXTENDED	EACH	1	1	--
86400100	TRANSCIVER-FIBER OPTIC	EACH	1	1	--
87301215	ELECTRIC CABLE IN CONDUIT, SIGNAL NO. 14 2C	FOOT	1038	1038	--
87301225	ELECTRIC CABLE IN CONDUIT, SIGNAL NO. 14 3C	FOOT	1087	1087	--
87301245	ELECTRIC CABLE IN CONDUIT, SIGNAL NO. 14 5C	FOOT	731	731	--
87301255	ELECTRIC CABLE IN CONDUIT, SIGNAL NO. 14 7C	FOOT	281	281	--
87301805	ELECTRIC CABLE IN CONDUIT, SERVICE, NO. 6 2C	FOOT	179	179	--
87900100	DRILL EXISTING FOUNDATION	EACH	3	3	--
87900200	DRILL EXISTING HANDHOLE	EACH	3	3	--
88040150	SIGNAL HEAD, POLYCARBONATE, LED, 1-FACE, 5-SECTION, BRACKET MOUNTED	EACH	1	1	--
88040160	SIGNAL HEAD, POLYCARBONATE, LED, 1-FACE, 5-SECTION, MAST ARM MOUNTED	EACH	1	1	--
88200410	TRAFFIC SIGNAL BACKPLATE, LOUVERED, FORMED PLASTIC	EACH	2	2	--
89500400	RELOCATE EXISTING PEDESTRIAN PUSH-BUTTON	EACH	1	1	--
89502210	MODIFY EXISTING CONTROLLER CABINET	EACH	1	1	--
89502300	REMOVE ELECTRIC CABLE FROM CONDUIT	FOOT	2899	2899	--
89502375	REMOVE EXISTING TRAFFIC SIGNAL EQUIPMENT	EACH	1	1	--
X0323336	LED SIGNAL FACE RETROFIT, RED BALL	EACH	5	5	--
X0323337	LED SIGNAL FACE RETROFIT, GREEN BALL	EACH	5	5	--
X0323418	LED SIGNAL FACE RETROFIT, YELLOW BALL	EACH	5	5	--
X8730027	ELECTRIC CABLE IN CONDUIT, GROUNDING, NO. 6 1C	FOOT	561	561	--
X8860100	LOOP DETECTOR TESTING	EACH	1	1	--
XX002179	ELECTRIC CABLE IN CONDUIT, COMMUNICATION, NO. 20 3/C	FOOT	416	416	--
XX004444	PEDESTRIAN SIGNAL HEAD, LED, 1-FACE, BRACKET MOUNTED, RETROFIT	EACH	8	8	--
*3001707	LIGHT DETECTOR, INSTALLATION ONLY	EACH	3	--	3
*3001826	CONFIRMATION BEACON, INSTALLATION ONLY	EACH	3	--	3
*3001708	LIGHT DETECTOR AMPLIFIER, INSTALLATION ONLY	EACH	3	--	3

LEGEND

- ① 80% FEDERAL, 20% STATE
- ② 80% FEDERAL, 15% STATE, 5% CITY
- ③ 80% FEDERAL, 13.3% STATE, 6.7% CITY
- ④ 80% FEDERAL, 10% STATE, 10% CITY
- ⑤ 100% CITY

LEGEND

	SIDEWALK REMOVAL AND REPLACEMENT
--	----------------------------------

TRAFFIC SIGNALS LEGEND

EXISTING	PROPOSED	DESCRIPTION
		SERVICE INSTALLATION
		CONTROLLER CABINET
		CONDUIT
		SIGNAL HEAD WITH BACKPLATE
		STEEL MAST ARM
		TRAFFIC SIGNAL POST
		HANDHOLE
		DOUBLE HANDHOLE
		PEDESTRIAN SIGNAL HEAD
		PEDESTRIAN PUSH BUTTON
		EMERGENCY VEHICLE LIGHT DETECTOR

REVISIONS

NAME	DATE
ARR	4/07

ILLINOIS DEPARTMENT OF TRANSPORTATION
 TRAFFIC SIGNAL PLAN
 FAP 330 (IL 17)-COURT STREET AND
 FAP 840 (IL 50)-HARRISON AVENUE
 SECTION (139 Z, 11) TS-1 & (1) TS-2
 KANKAKEE COUNTY

VERT. 1" = 20'
 SCALE: HORIZ. 1" = 20'
 DATE 6/05

DRAWN BY ARR
 CHECKED BY JLS