

F.A.P. RTE.	SECTION	COUNTY	TOTAL SHEETS	SHEET NO.
*	**	KANKAKEE	48	24
STA. TO STA.		ILLINOIS FED. AID PROJECT		

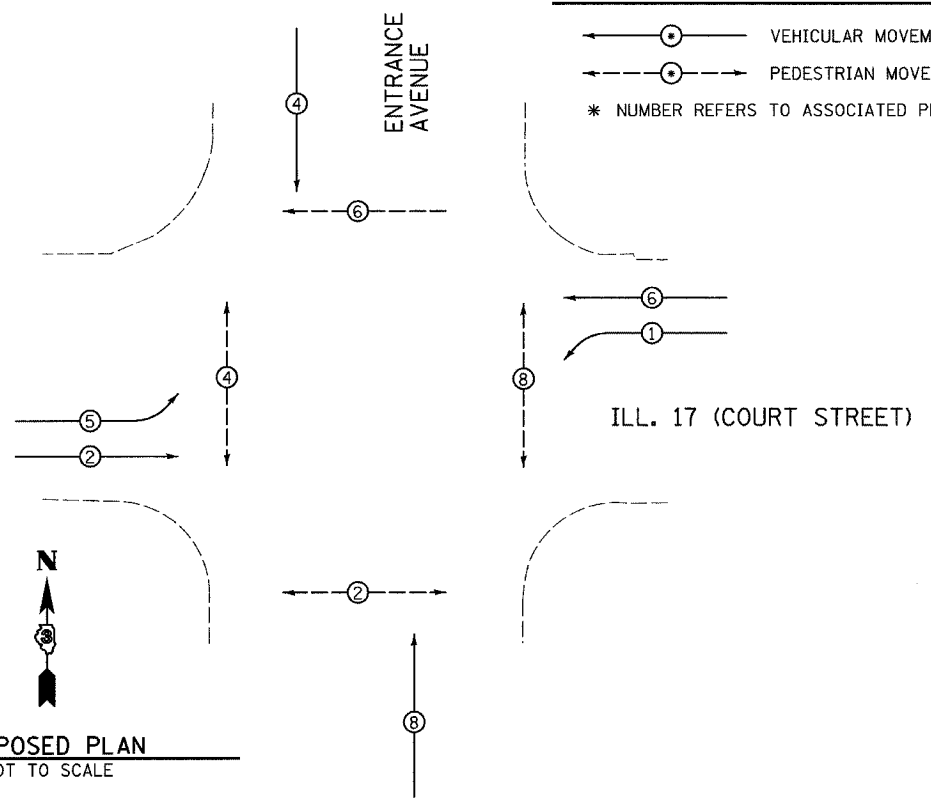
FAP 840 (IL 50) & FAP 330 (IL 17)
 (139 Z, 11) TS-1 & (1) TS-2

CONTROLLER SEQUENCE

NAME OF INTERSECTION: ILL 17 (COURT STREET) AND ENTRANCE AVENUE
 CONTROLLER SPECIFIED: FULL-ACTUATED CONTROLLER, STANDARD SEQUENCE II, 8 PHASE, IN TYPE IV CABINET
 REFERRING TO STANDARD 857001, THE VEHICULAR AND PEDESTRIAN PHASES USED ARE DESIGNATED.

LEGEND

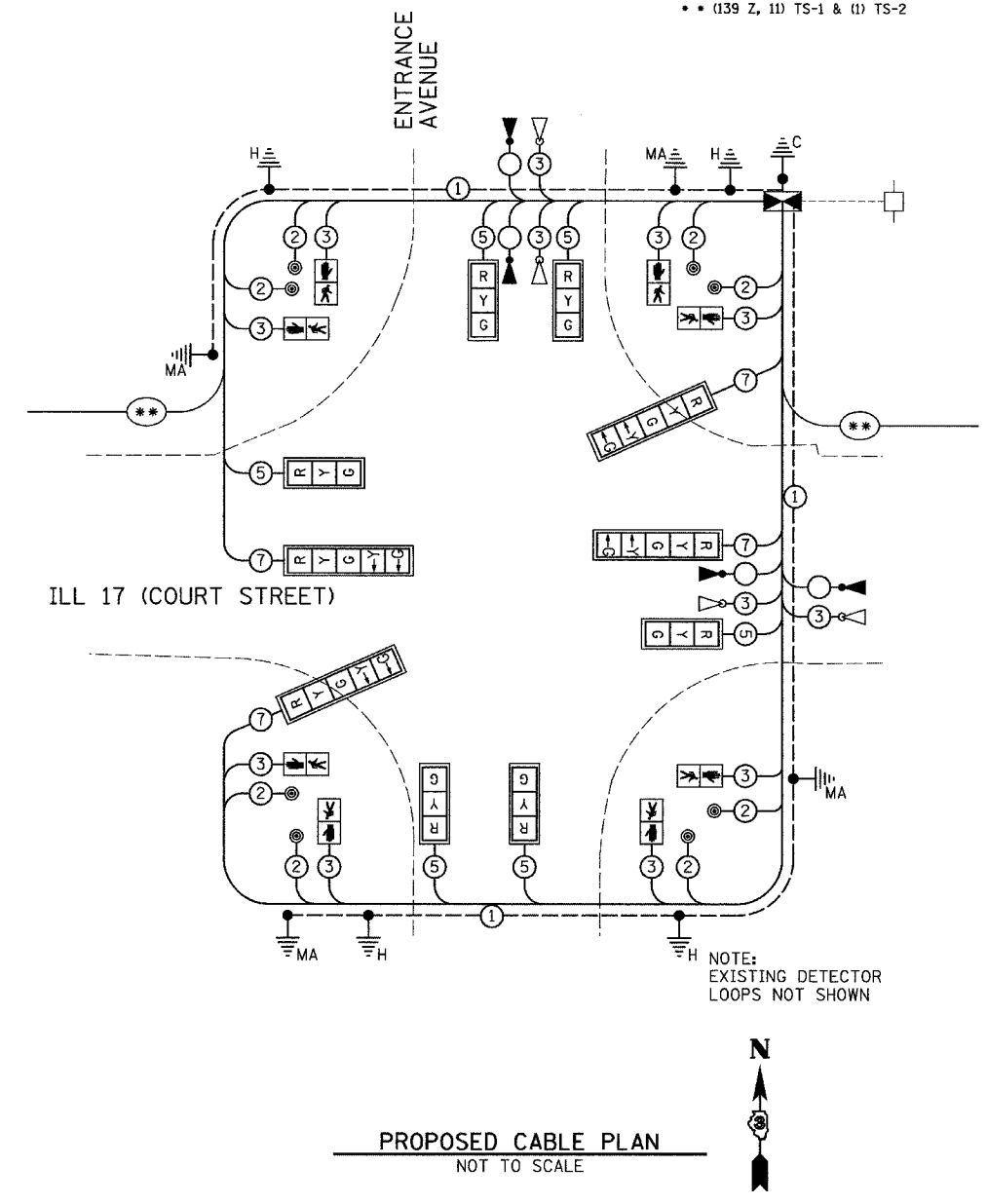
- VEHICULAR MOVEMENT
- PEDESTRIAN MOVEMENT
- * NUMBER REFERS TO ASSOCIATED PHASE



PROPOSED PLAN
NOT TO SCALE

PROPOSED TRAFFIC SIGNALS LEGEND

- ① PROPOSED CABLE NUMBER
*CABLE NUMBER
- ▲ EMERGENCY VEHICLE CONFIRMATION BEACON
- ▽ EMERGENCY VEHICLE LIGHT DETECTOR
- ** PROPOSED INTERCONNECT CABLE
- PROPOSED CONTROLLER CABINET
- PEDESTRIAN PUSH BUTTON
- Y LEFT TURN YELLOW
- G LEFT TURN GREEN
- SIGNAL SECTION 12"
- WALK/DON'T WALK SECTION
- TRAFFIC SIGNAL BACKPLATE
- RETROFIT EXISTING TRAFFIC SIGNAL WITH LED HEADS
- ① GROUND CABLE IN CONDUIT, NO. 6 SOLID COPPER (GREEN)
- C, P, S, H GROUND ROD AT CONTROLLER (C), POST (P), MAST ARM (MA), SERVICE (S), OR HANDHOLE (H)



PROPOSED CABLE PLAN
NOT TO SCALE

NOTE: EXISTING DETECTOR LOOPS NOT SHOWN

REVISIONS	
NAME	DATE
ARR	4/07

ILLINOIS DEPARTMENT OF TRANSPORTATION
CABLE PLAN
 FAP 330 (IL 17)-COURT STREET AND
 THIRD AVENUE-ENTRANCE AVENUE
 SECTION (139 Z, 11) TS-1 & (1) TS-2
 KANKAKEE COUNTY

SCALE: VERT. 1" = 20'
 HORIZ. 1" = 20'
 DATE 6/05

DRAWN BY ARR
 CHECKED BY JLS