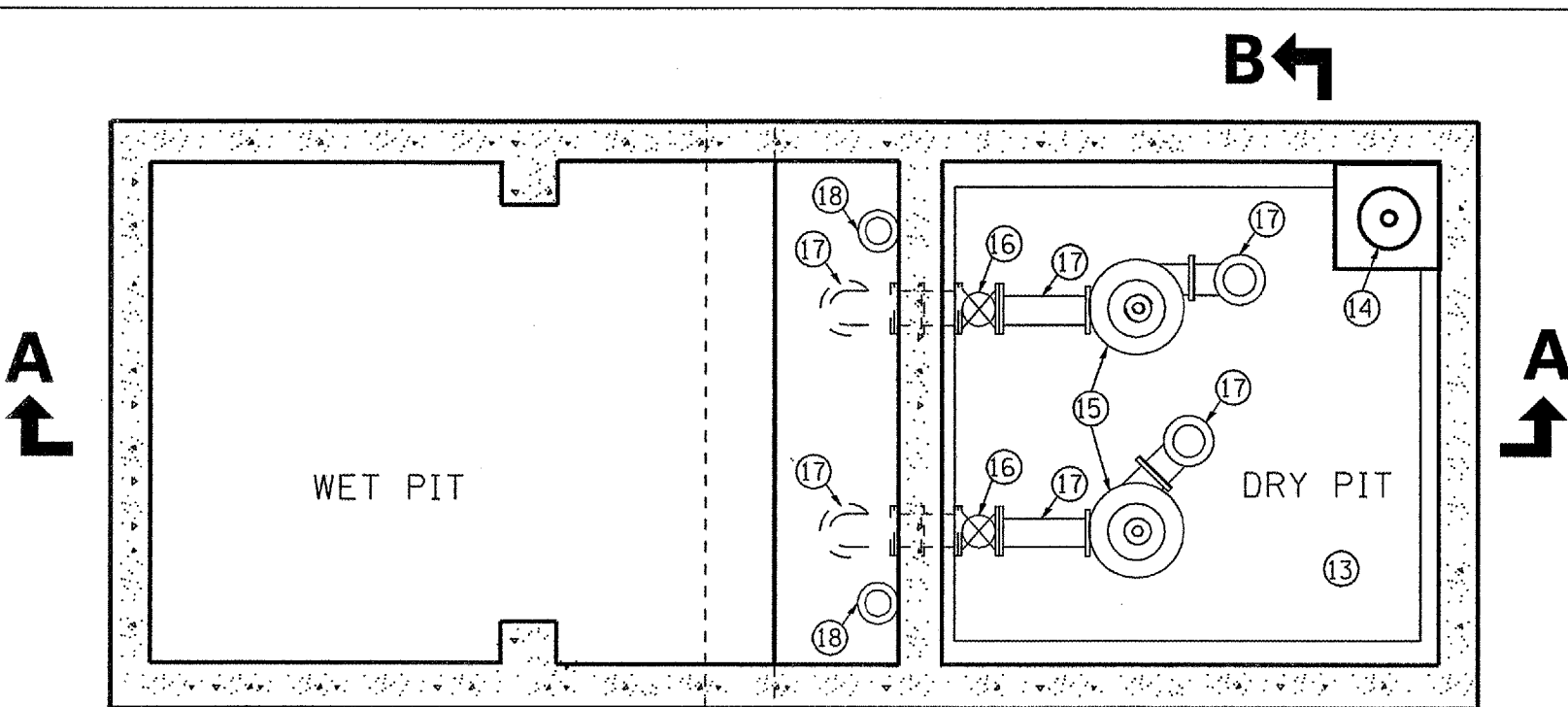


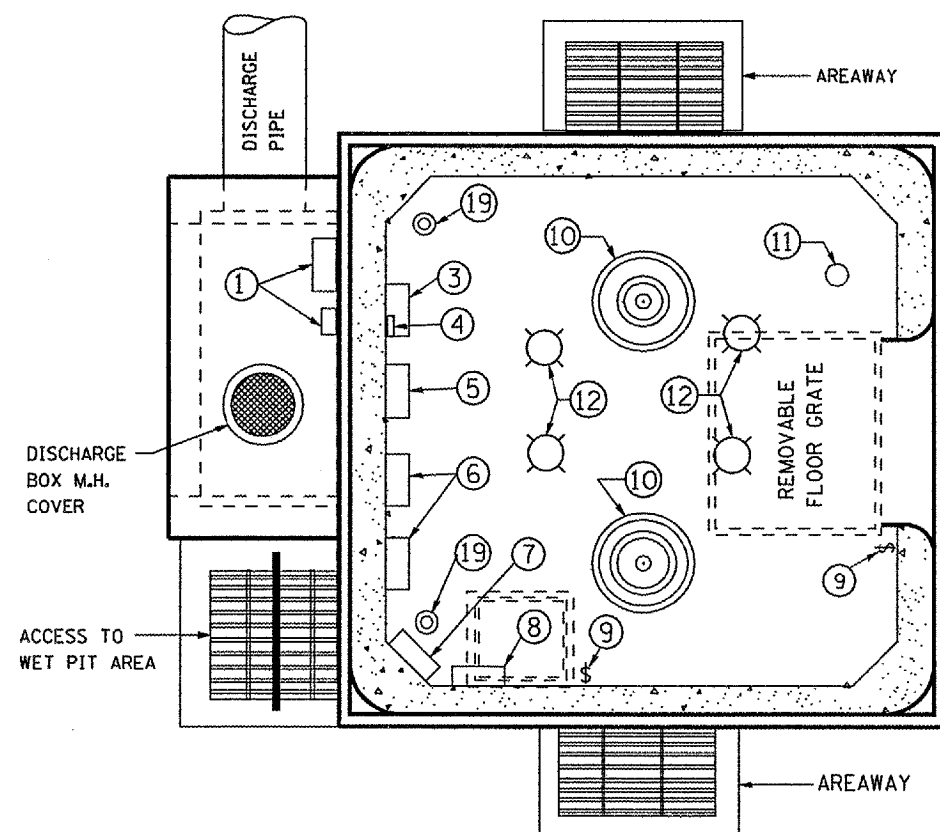
F.A.P. RTE.	SECTION	COUNTY	TOTAL SHEETS	SHEET NO.
332	(2SB-FAGH)I	IROQUOIS	14	8
FED. ROAD DIST. NO.	ILLINOIS	STATE AID PROJECT		

DESCRIPTION OF WORK

- ① REMOVE ELECTRICAL SERVICE EQUIPMENT
- ② REMOVE LOUVER
- ③ REMOVE MAIN DISCONNECT
- ④ REMOVE SUMP PUMP SAFETY SWITCH
- ⑤ REMOVE TRANSFORMER, HEAT LAMP SWITCH AND LOAD CENTER
- ⑥ REMOVE SAFETY SWITCH AND COMBINATION STARTER
- ⑦ REMOVE PUMP CONTROL PANEL
- ⑧ CHATTER BOX TO REMAIN
- ⑨ REMOVE SWITCH
- ⑩ REMOVE MOTOR
- ⑪ REMOVE DRY PIT MOTOR AND MOTOR CONTROLLER
- ⑫ REMOVE LIGHT FIXTURES
- ⑬ REMOVE PIT LIGHT FIXTURES
- ⑭ REMOVE SUMP PUMP AND PIPING
- ⑮ REMOVE PUMPS
- ⑯ REMOVE GATE VALVES
- ⑰ REMOVE SUCTION AND DISCHARGE PIPING
- ⑱ REMOVE FLOAT PIPING
- ⑲ REMOVE FLOAT CONTROL
- ⑳ REMOVE MOTOR SHAFT INCLUDING BEARINGS
- ㉑ REMOVE AREAWAY DRAIN PIPING, BOTH SIDES
- ㉒ ACCESS LADDER TO REMAIN



PIT FLOOR PLAN



MOTOR ROOM FLOOR PLAN

DATE: JANUARY 7, 2007
FILE: c:\projects\cmain08\cm309\details.dgn

REVISIONS	DATE

ILLINOIS DEPARTMENT OF TRANSPORTATION
**EQUIPMENT & ELECTRICAL
 REMOVAL DETAILS**
 FAP ROUTE 322 (IL 1) SECTION (2SB-FAGH)I
 IROQUOIS COUNTY
 MILFORD PUMP STATION
 S.N. 038-0024