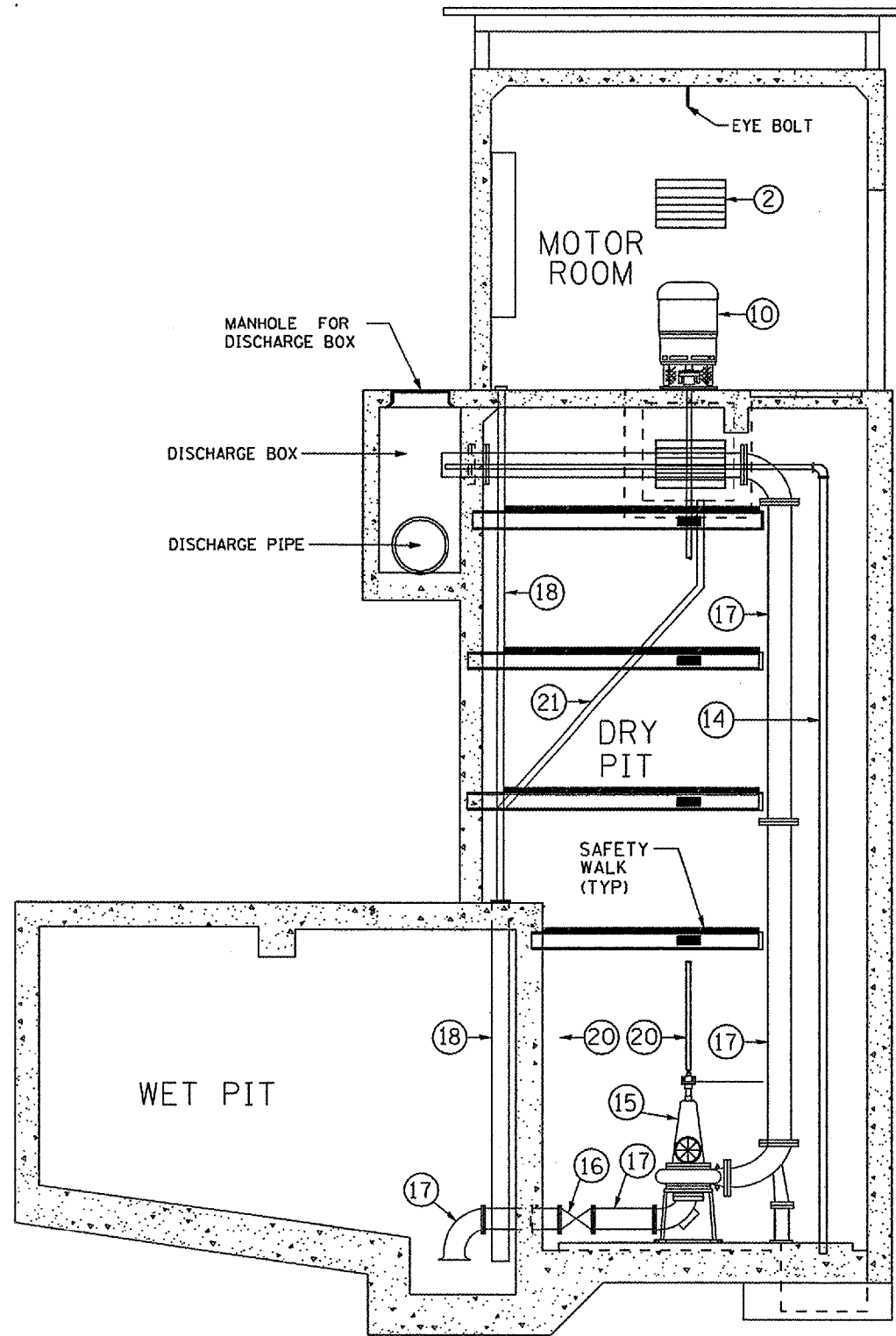
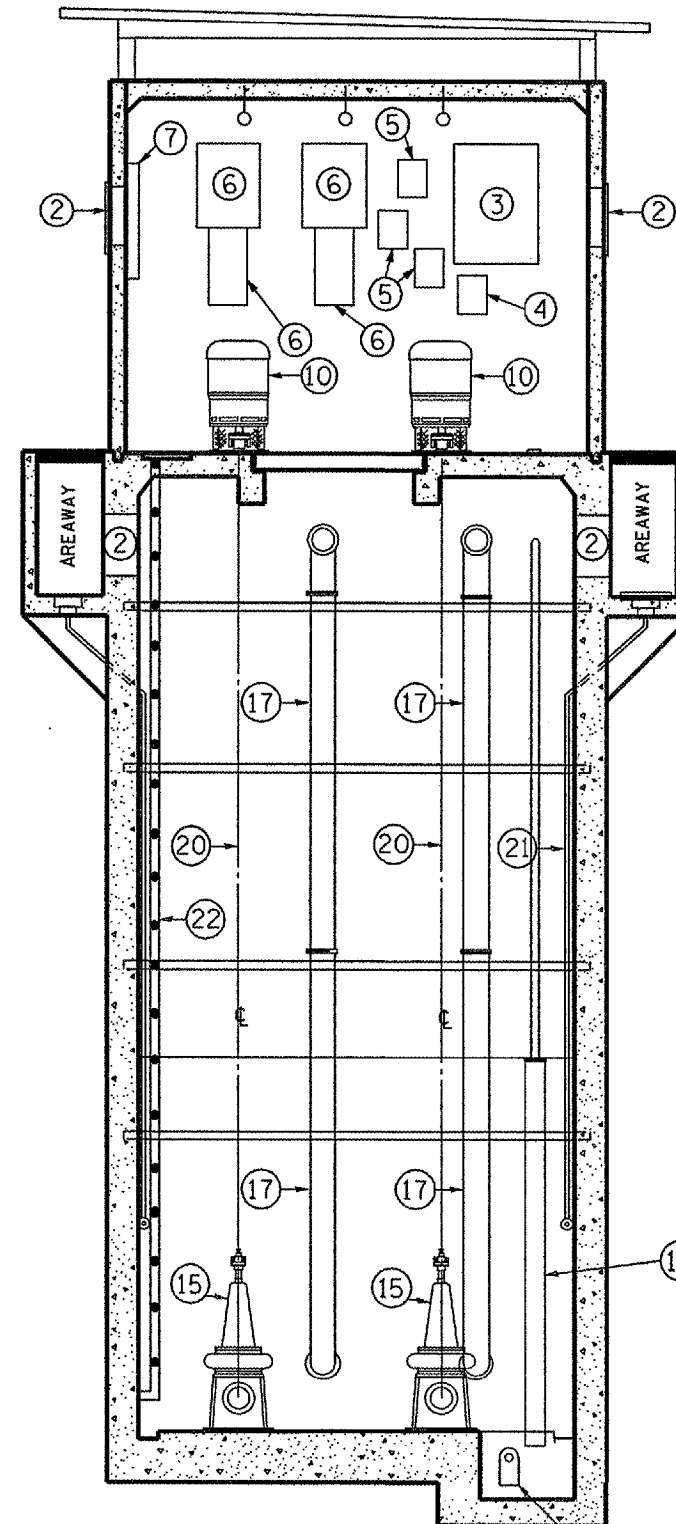


F.A.P. RTE.	SECTION	COUNTY	TOTAL SHEETS	SHEET NO.
332	(2SB-FAGH)I	IROQUOIS	14	9
FED. ROAD DIST. NO. ILLINOIS		STATE AID PROJECT		



SECTION A-A



SECTION B-B

NOTE

ANY EXISTING SUCTION, DISCHARGE OR DRAIN PIPING THAT IS CAST INTO THE CONCRETE WALL SHALL REMAIN IN PLACE. ALL OTHER PIPING SHALL BE REMOVED.

DATE: JANUARY 7, 2007
 FILE: c:/projects/cmain08/cm309/details.dgn

REVISIONS	
NAME	DATE

ILLINOIS DEPARTMENT OF TRANSPORTATION
**EQUIPMENT & ELECTRICAL
 REMOVAL DETAILS**
 FAP ROUTE 322 (IL 1) SECTION (2SB-FAGH)I
 IROQUOIS COUNTY
 MILFORD PUMP STATION
 S.N. 038-0024