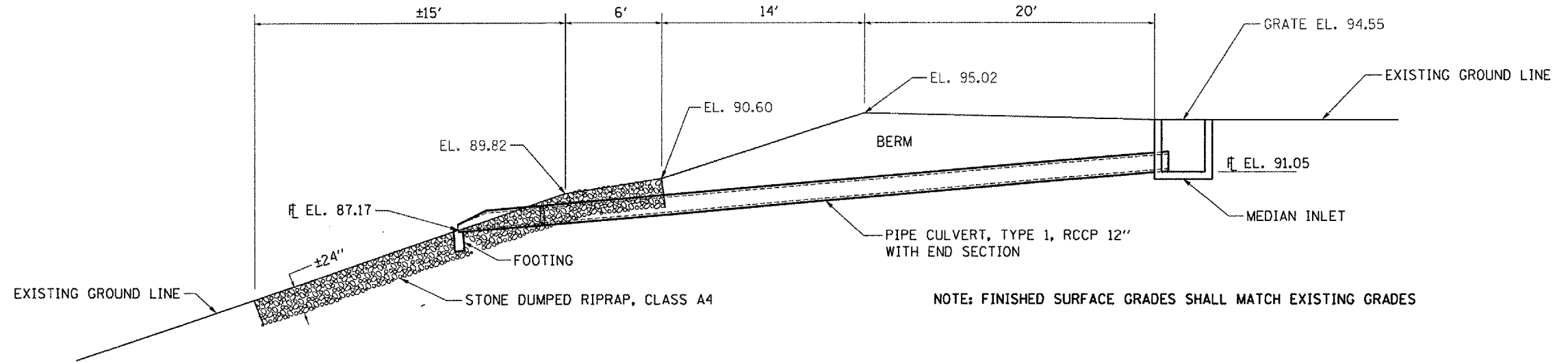
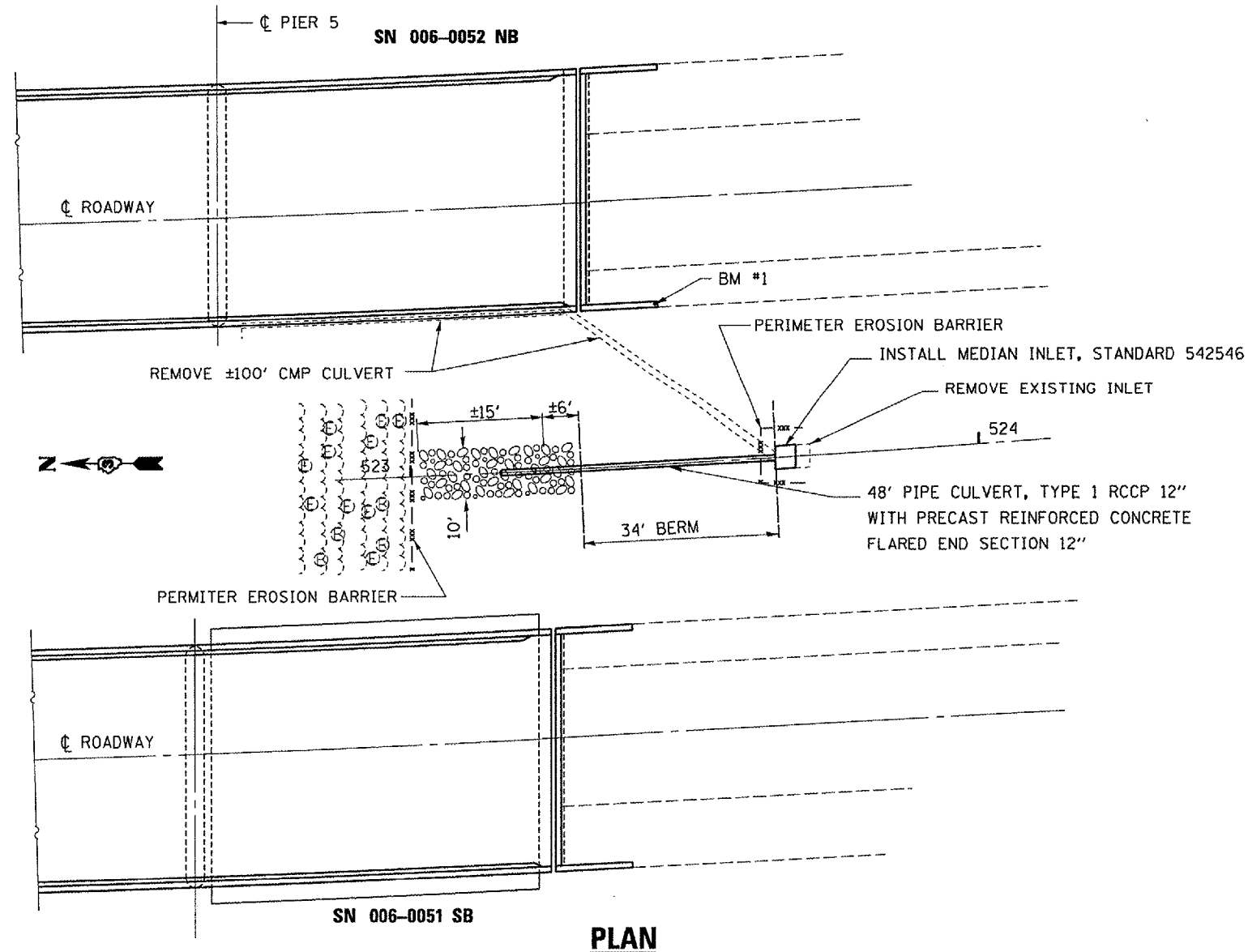


F.A.I. RTE.	SECTION	COUNTY	TOTAL SHEETS	SHEET
180	(06-2B-1)I	BUREAU	14	8

BM #1 SOUTHWEST CORNER PARAPET WALL EL. 100.00



**ELEVATION**



**GENERAL NOTES**

PLAN DIMENSIONS AND DETAILS RELATIVE TO EXISTING PLANS ARE SUBJECT TO ROUTINE VARIATIONS. THE CONTRACTOR SHALL FIELD VERIFY EXISTING DIMENSIONS AND DETAILS AFFECTING NEW CONSTRUCTION AND MAKE NECESSARY APPROVED ADJUSTMENTS PRIOR TO CONSTRUCTION OR ORDERING OF MATERIALS. SUCH VARIATIONS SHALL NOT BE CAUSE FOR ADDITIONAL COMPENSATION FOR A CHANGE IN SCOPE OF THE WORK, HOWEVER, THE CONTRACTOR WILL BE PAID FOR THE QUANTITY ACTUALLY FURNISHED BASED UPON THE UNIT PRICE BID FOR THE WORK.

FINISHED SURFACE GRADES SHALL BE RESTORED TO ORIGINAL CONDITION WHEREVER PRACTICAL. THE ENGINEER MAY ADJUST SLOPES AND GRADES TO FIT EXISTING GROUND CONDITIONS AT TIME OF CONSTRUCTION OPERATIONS.

THE FINISHED GRADE AND SLOPE OF THE RIPRAP SHALL MATCH THE EXISTING GRADE AND SLOPE OF THE EXISTING SLOPE.

THE CONTRACTOR SHALL REMOVE ALL UNSUITABLE MATERIAL PRIOR TO PLACING THE RIPRAP.

SUITABLE EXCAVATED MATERIAL, FROM THE SLOPE WALL REMOVAL OPERATIONS AS APPROVED BY THE ENGINEER, MAY BE USED TO BACKFILL THE TRENCHES AFTER THE CULVERT REMOVAL AND PLACEMENT OPERATIONS HAVE BEEN COMPLETED

REVISIONS	
NAME	DATE

ILLINOIS DEPARTMENT OF TRANSPORTATION  
**PIPE CULVERT DETAILS AT S. ABUT.**  
 FAI ROUTE 180 SECTION (06-2B-1)I  
 BUREAU COUNTY  
 STA. 521 + 42  
 S.N. 006-0052 NB

Date: April 5, 2007  
 c:/projects/main/cm312/details.dgn