

F.A.I. RTE.	SECTION	COUNTY	TOTAL SHEETS	SHEET NO.
55	*	**	13	1

\* - D-6 MEDIAN PROTECTION 2007  
 \*\* - MACOUPIN, MONTGOMERY, SANGAMON, AND LOGAN COUNTIES

STATE OF ILLINOIS  
 DEPARTMENT OF TRANSPORTATION  
 DIVISION OF HIGHWAYS

**PROPOSED  
 HIGHWAY PLANS**

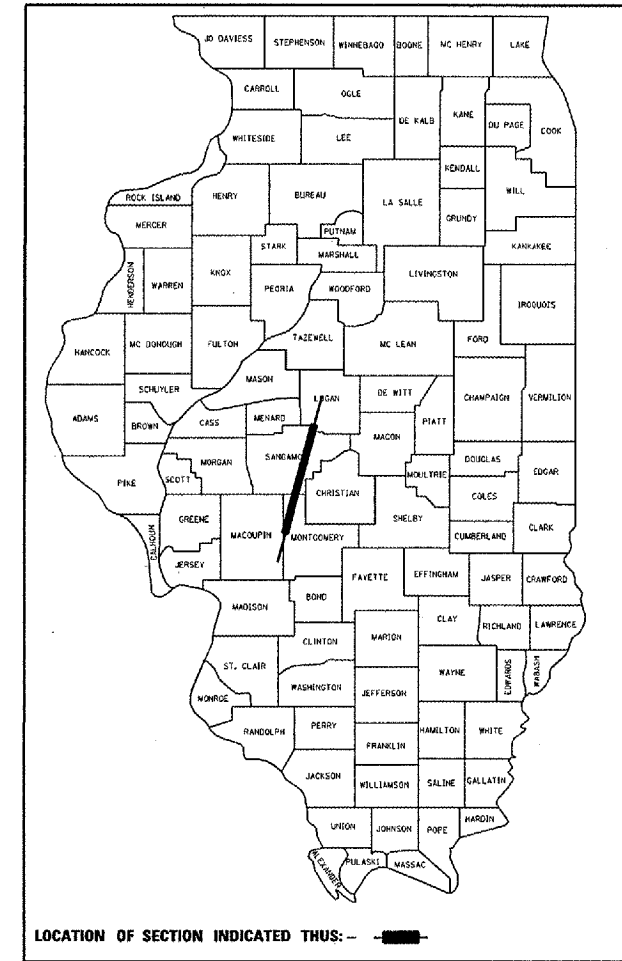
F.A.I. ROUTE 55 (I-55)  
 SECTION D-6 MEDIAN PROTECTION 2007  
 PROJECT : HSIP-055-2 (119) 041  
 VARIOUS COUNTIES

**INDEX OF SHEETS**

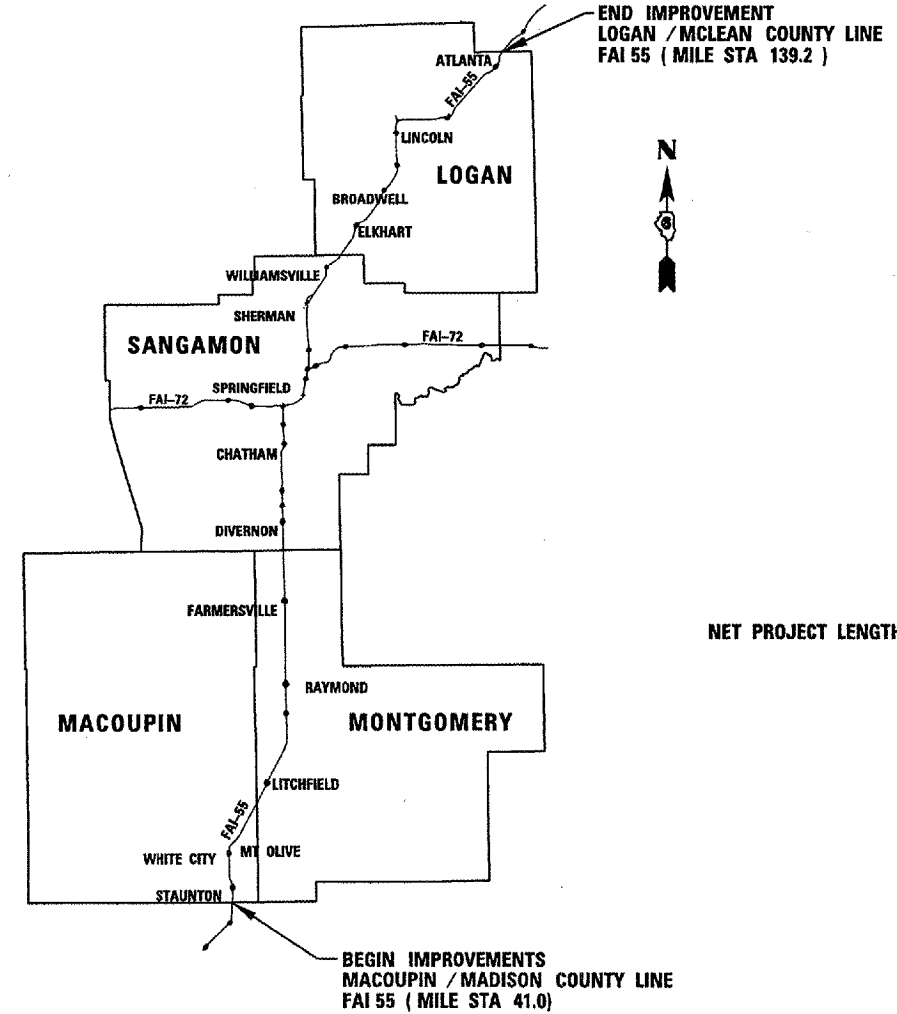
- 1. COVER SHEET
- 2. GENERAL NOTES
- 3. SUMMARY OF QUANTITIES
- 4-8. SCHEDULES
- 9. PLAN SHEETS
- 10-13. DETAILS
- 13A. TRAFFIC BARRIER TERMINAL TYPE 2 DETAIL

FOR LIST OF STANDARDS, SEE SHEET NO. 2

D-96-529-06

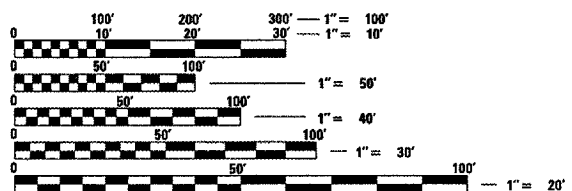


**COUNTIES**  
 C-96-514-07



NET PROJECT LENGTH = 98.2 MILES

NOT TO SCALE



FULL SIZE PLANS HAVE BEEN PREPARED USING STANDARD ENGINEERING SCALES. REDUCED SIZED PLANS WILL NOT CONFORM TO STANDARD SCALES. IN MAKING MEASUREMENTS ON REDUCED PLANS, THE ABOVE SCALES MAY BE USED.

J.U.L.I.E.  
 JOINT UTILITY LOCATION INFORMATION FOR EXCAVATION  
 1-800-892-0123

CONTRACT NO. 72A55

STATE OF ILLINOIS  
 DEPARTMENT OF TRANSPORTATION  
 DIVISION OF HIGHWAYS

SUBMITTED May 10, 2007  
Chris Hildebrand  
 DEPUTY DIRECTOR OF HIGHWAYS, REGION ENGINEER

June 29, 2007  
Eric E. Harn  
 INTERIM ENGINEER OF DESIGN AND ENVIRONMENT

June 29, 2007  
Robert R. Sees, P.E.  
 DIRECTOR OF HIGHWAYS, CHIEF ENGINEER

**PRINTED BY THE AUTHORITY  
 OF THE STATE OF ILLINOIS**

PROJECT ENGINEER JOHN NEGANGARD 217-782-6990  
 SQUAD LEADER BRIAN GALLOWAY 217-557-7897

F.A.I. RTE.	SECTION	COUNTY	TOTAL SHEETS	SHEET NO.
55	*	**	13	2
STA. _____		TO STA. _____		
FED. ROAD DIST. NO. _____ ILLINOIS FED. AID PROJECT				
* - D-6 MEDIAN PROTECTION 2007 ** - MACOUPIN, MONTGOMERY, SANGAMON, AND LOGAN COUNTIES				

LIST OF STANDARDS:

630001-07	635011-01
630301-04	701101-01
631011-03	701106-01
631031-06	701400-02
635006-02	701406-04
	702001-06

Route \_\_\_\_\_  
 Section \_\_\_\_\_  
 County \_\_\_\_\_

GENERAL NOTES:

1. ANY REFERENCE TO THE STANDARDS THROUGHOUT THE PLANS SHALL BE INTERPRETED TO BE THE LATEST STANDARDS OF THE DEPARTMENT AS INCLUDED IN THE PLANS.
2. NO EXCAVATION IS ANTICIPATED ON THIS PROJECT WHICH WOULD AFFECT UTILITIES. SHOULD NOTIFICATION BE NECESSARY, THE CONTRACTOR IS RESPONSIBLE FOR CONTACTING J.U.L.I.E. A MINIMUM OF 48 HOURS PRIOR TO COMMENCING WORK - (800) 892-0123.
3. THE CONTRACTOR WILL BE REQUIRED TO CONTACT THE OPERATIONS ENGINEER (217) 782-7314 AT LEAST 72 HOURS PRIOR TO DRIVING ANY POSTS. TO MAKE SURE STATE OWNED UTILITIES ARE NOT IN THE WAY.
4. THE CONTRACTOR WILL BE REQUIRED TO REPAIR ANY AREAS OF TURF THAT ARE DAMAGED DURING THE EXECUTION OF THIS CONTRACT. THIS WORK WILL NOT BE MEASURED FOR PAYMENT AND WILL BE CONSIDERED INCIDENTAL TO THE CONTRACT.
5. ALL GUARDRAIL SHALL HAVE A PRELIMINARY LAYOUT. GUARDRAIL POSTS SHALL BE ADJUSTED SO AS TO MISS ANY SHOULDER DRAINS, INLETS, PIPE CULVERTS, STORM SEWER OR ANY OTHER HAZARD THAT MAY INTERFERE WITH GUARDRAIL CONSTRUCTION.

EXAMINED <u>May 2</u> 20 <u>07</u> <u>W.R.G.</u>
PROGRAM IMPLEMENTATION ENGINEER
EXAMINED <u>May 8</u> 20 <u>07</u> <u>W.R.G.</u>
PROGRAM DEVELOPMENT ENGINEER

DISTRICT SIX	
EXAMINED <u>May 1</u> 20 <u>07</u> <u>Kevin J. Hoars</u>	
OPERATIONS ENGINEER	

REVISIONS	
NAME	DATE

ILLINOIS DEPARTMENT OF TRANSPORTATION  
 GENERAL NOTES  
 FAI 55  
 SECTION D-6 MEDIAN PROTECTION 2007  
 MACOUPIN, MONTGOMERY,  
 SANGAMON, LOGAN COUNTIES

Rev.



F.A.I. RTE.	SECTION	COUNTY	TOTAL SHEETS	SHEET NO.
55	*	**	13	4

STA.	TO STA.
FED. ROAD DIST. NO.	ILLINOIS FED. AID PROJECT

\* - D-6 MEDIAN PROTECTION 2007  
 \*\* - MACOUPIN, MONTGOMERY, SANGAMON, AND LOGAN COUNTIES

SCHEDULE FOR PROPOSED SAFETY IMPROVEMENTS

GENERAL LOCATION	DESCRIPTION OF HAZARD	I-55 STA OF HAZARD	EXISTING MEDIAN WIDTH	EXISTING SHOULDER WIDTH	HAZARD OFFSET FROM EDGE OF PAVEMENT	WIDTH OF HAZARD	LENGTH OF HAZARD	PROPOSED IMPROVEMENT SEE DETAIL	GUARDRAIL REMOVAL	TRAFFIC BARRIER TERMINAL REMOVAL	SPBGR TYPE A	GUARDRAIL REFLECTORS	TRAFFIC BARRIER TERMINAL TYPE 1, SPL (TANGENT)	TERMINAL MARKER - DIRECT APPLIED	TRAFFIC BARRIER TERMINAL TYPE 2	TRAFFIC BARRIER TERMINAL TYPE 6 SPECIAL
		(MILE STA)	(FOOT)	(FOOT)	(FOOT)	(FOOT)	(FOOT)	(A, B, OR C)	(FOOT)	(EACH)	(FOOT)	(EACH)	(EACH)	(EACH)	(EACH)	(EACH)
I-55 MACOUPIN COUNTY																
SN 059-0045	MEDIAN PIER (NB)	41.0	87.1	6.0	42.5	2.6	61.4	A	--	--	100.0	4	1	1	1	--
SN 059-0045	MEDIAN PIER (SB)	41.0	87.1	6.0	42.0	2.6	61.4	A	--	--	100.0	4	1	1	1	--
SN 059-0044	MEDIAN PIER (NB)	41.5	87.9	6.0	42.0	2.8	38.5	A	--	--	87.5	4	1	1	1	--
SN 059-0044	MEDIAN PIER (SB)	41.5	87.9	6.0	43.1	2.8	38.5	A	--	--	75.0	4	1	1	1	--
SN 059-0043	MEDIAN PIER (NB)	41.8	87.2	6.0	41.0	7.0	49.1	A *	--	--	137.5	4	1	1	1	--
SN 059-0043	MEDIAN PIER (SB)	41.8	87.2	6.0	39.2	7.0	49.1	A *	--	--	137.5	4	1	1	1	--
SN 059-0042	MEDIAN PIER (NB)	42.0	87.6	6.0	42.0	2.6	25.0	A	--	--	62.5	4	1	1	1	--
SN 059-0042	MEDIAN PIER (SB)	42.0	87.6	6.0	43.0	2.6	25.0	A	--	--	62.5	4	1	1	1	--
SN 059-0041	MEDIAN SHOULDER (NB)	43.2	--	--	--	--	--	C	125.0	1	337.5	5	1	1	--	1
SN 059-0040	MEDIAN SHOULDER (SB)	43.3	--	--	--	--	--	C	125.0	1	337.5	5	1	1	--	1
SN 059-0039	MEDIAN PIER (NB)	44.0	87.5	6.0	42.2	2.5	54.6	A	--	--	87.5	4	1	1	1	--
SN 059-0039	MEDIAN PIER (SB)	44.0	87.5	6.0	42.8	2.5	54.6	A	--	--	87.5	4	1	1	1	--
SN 059-0038	MEDIAN PIER (NB)	46.0	87.9	6.0	42.7	2.6	22.8	A	--	--	62.5	4	1	1	1	--
SN 059-0038	MEDIAN PIER (SB)	46.0	87.9	6.0	42.6	2.6	22.8	B	--	--	212.5	4	1	1	1	--
SN 059-0037	MEDIAN PIER (NB)	48.0	87.3	6.0	42.5	2.5	19.1	A	--	--	50.0	4	1	1	1	--
SN 059-0037	MEDIAN PIER (SB)	48.0	87.3	6.0	42.3	2.5	19.1	A	--	--	50.0	4	1	1	1	--
I-55 MACOUPIN COUNTY SUB-TOTAL:									250.0	2.0	1987.5	66.0	16.0	16.0	14.0	2.0

PLOT DATE = 5/10/2007  
 FILE NAME = c:\p\projects\4652406\shsch.dgn  
 PLOT SCALE = 1/8"=1'-0" / IN.  
 USER NAME = laughlin-1

REVISIONS	
NAME	DATE

ILLINOIS DEPARTMENT OF TRANSPORTATION  
 SCHEDULE OF QUANTITIES  
 FAI 55  
 SECTION D-6 MEDIAN PROTECTION 2007  
 MACOUPIN, MONTGOMERY,  
 SANGAMON, LOGAN COUNTIES

F.A.I. RTE.	SECTION	COUNTY	TOTAL SHEETS	SHEET NO.
55	*	**	13	5

STA.	TO STA.
FED. ROAD DIST. NO.	ILLINOIS FED. AID PROJECT

\* - D-6 MEDIAN PROTECTION 2007  
 \*\* - MACOUPIN, MONTGOMERY, SANGAMON, AND LOGAN COUNTIES

SCHEDULE FOR PROPOSED SAFETY IMPROVEMENTS

GENERAL LOCATION	DESCRIPTION OF HAZARD	I-55 STA OF HAZARD	EXISTING MEDIAN WIDTH	EXISTING SHOULDER WIDTH	HAZARD OFFSET FROM EDGE OF PAVEMENT	WIDTH OF HAZARD	LENGTH OF HAZARD	PROPOSED IMPROVEMENT SEE DETAIL	GUARDRAIL REMOVAL	TRAFFIC BARRIER TERMINAL REMOVAL	SPBGR TYPE A	GUARDRAIL REFLECTORS	TRAFFIC BARRIER TERMINAL TYPE 1, SPL (TANGENT)	TERMINAL MARKER - DIRECT APPLIED	TRAFFIC BARRIER TERMINAL TYPE 2	TRAFFIC BARRIER TERMINAL TYPE 6 SPECIAL
		(MILE STA)	(FOOT)	(FOOT)	(FOOT)	(FOOT)	(FOOT)	(FOOT)	(A, B, OR C)	(FOOT)	(EACH)	(FOOT)	(EACH)	(EACH)	(EACH)	(EACH)
I-55 MONTGOMERY COUNTY																
SN 068-0052	MEDIAN PIER (NB)	51.0	88.6	6.0	42.8	2.5	23.9	A	--	--	62.5	4	1	1	1	--
SN 068-0052	MEDIAN PIER (SB)	51.0	88.6	6.0	43.3	2.5	23.9	A	--	--	62.5	4	1	1	1	--
SN 068-0051	MEDIAN PIER (NB)	52.0	88.2	6.0	42.0	3.3	107.0	A	--	--	150.0	4	1	1	1	--
SN 068-0051	MEDIAN PIER (SB)	52.0	88.2	6.0	42.9	3.3	107.0	A	--	--	150.0	4	1	1	1	--
SN 068-0050	MEDIAN PIER (NB)	53.5	87.5	6.0	42.2	2.5	23.2	A	--	--	62.5	4	1	1	1	--
SN 068-0050	MEDIAN PIER (SB)	53.5	87.5	6.0	42.8	2.5	23.2	B	--	--	212.5	4	1	1	1	--
SN 068-0049	MEDIAN SHOULDER (NB)	54.3	--	--	--	--	--	C	87.5	1	262.5	4	1	1	--	1
SN 068-0048	MEDIAN SHOULDER (SB)	54.4	--	--	--	--	--	C	87.5	1	262.5	4	1	1	--	1
SN 068-0047	MEDIAN PIER (NB)	54.9	87.5	6.0	42.2	2.5	29.4	A *	--	--	75.0	4	1	1	1	--
SN 068-0047	MEDIAN PIER (SB)	54.9	87.5	6.0	42.8	2.5	29.4	A *	--	--	75.0	4	1	1	1	--
SN 068-0046	MEDIAN SHOULDER (NB)	55.8	--	--	--	--	--	C	87.5	1	237.5	4	1	1	--	1
SN 068-0045	MEDIAN SHOULDER (SB)	55.9	--	--	--	--	--	C	87.5	1	237.5	4	1	1	--	1
(6C068I055R056.3)	CANTILEVER SIGN STR (NB OUT.)	56.3	--	--	36.4	3.5	3.5	A	--	--	62.5	4	1	1	1	--
3RD PRE-CLEAR FOR WEIGH STA.	CANTILEVER MOTION STRUCTURE (NB)	56.5	--	--	31.5	3.0	3.0	A	--	--	75.0	4	1	1	1	--
SN 068-0044	MEDIAN PIER (NB)	57.0	87.6	6.0	42.6	2.5	24.7	A	--	--	62.5	4	1	1	1	--
SN 068-0044	MEDIAN PIER (SB)	57.0	87.6	6.0	42.5	2.5	24.7	A	--	--	62.5	4	1	1	1	--
SN 068-0043	MEDIAN PIER (NB)	60.0	87.1	6.0	42.4	2.5	51.8	A	--	--	87.5	4	1	1	1	--
SN 068-0043	MEDIAN PIER (SB)	60.0	87.1	6.0	42.2	2.5	51.8	A	--	--	87.5	4	1	1	1	--
SN 068-0042	MEDIAN PIER (NB)	63.0	87.8	6.0	42.6	2.5	75.2	A	--	--	112.5	4	1	1	1	--
SN 068-0042	MEDIAN PIER (SB)	63.0	87.8	6.0	42.7	2.5	75.2	A	--	--	112.5	4	1	1	1	--
(6C068I055R064.5)	CANTILEVER SIGN STR (NB OUT.)	64.5	--	--	36.2	3.5	3.5	A	--	--	62.5	4	1	1	1	--
(6C068I055R065.5)	CANTILEVER SIGN STR (SB OUT.)	65.5	--	--	35.8	3.5	3.5	A	--	--	62.5	4	1	1	1	--
SN 068-0041	MEDIAN PIER (NB)	67.0	86.6	6.0	41.6	2.5	22.7	A	--	--	62.5	4	1	1	1	--
SN 068-0041	MEDIAN PIER (SB)	67.0	86.6	6.0	42.5	2.5	22.7	A	--	--	62.5	4	1	1	1	--
SN 068-0040	MEDIAN PIER (NB)	70.0	89.1	6.0	43.0	2.5	22.6	A	--	--	62.5	4	1	1	1	--
SN 068-0040	MEDIAN PIER (SB)	70.0	89.1	6.0	43.6	2.5	22.6	A	--	--	62.5	4	1	1	1	--
SN 068-0038	MEDIAN SHOULDER (NB)	71.2	--	--	--	--	--	C	200.0	1	437.5	5	1	1	--	1
SN 068-0039	MEDIAN SHOULDER (SB)	71.3	--	--	--	--	--	C	200.0	1	437.5	5	1	1	--	1
SN 068-0037	MEDIAN PIER (NB)	72.0	87.6	6.0	42.4	2.5	55.0	A	--	--	87.5	4	1	1	1	--
SN 068-0037	MEDIAN PIER (SB)	72.0	87.6	6.0	42.7	2.5	55.0	A	--	--	87.5	4	1	1	1	--
SN 068-0036	MEDIAN PIER (NB)	74.0	87.3	6.0	42.3	2.5	22.6	A	--	--	62.5	4	1	1	1	--
SN 068-0036	MEDIAN PIER (SB)	74.0	87.3	6.0	42.5	2.5	22.6	A	--	--	62.5	4	1	1	1	--
SN 068-0036	OUTSIDE SHOULDER (SB)	74.0	--	11.0	20.2	2.5	22.6	A	--	--	87.5	4	1	1	1	--
SN 068-0035	OUTSIDE SHOULDER (SB)	75.5	--	11.0	20.2	2.5	23.0	A	--	--	87.5	4	1	1	1	--
SN 068-0035	MEDIAN PIER (NB)	76.0	87.6	6.0	42.1	2.5	23.0	A	--	--	62.5	4	1	1	1	--
SN 068-0035	MEDIAN PIER (SB)	76.0	87.6	6.0	43.0	2.5	23.0	A	--	--	62.5	4	1	1	1	--
SN 068-0105	MEDIAN PIER (NB)	76.9	87.7	6.0	42.6	2.5	13.7	A	--	--	50.0	4	1	1	1	--
SN 068-0105	MEDIAN PIER (SB)	76.9	87.7	6.0	42.6	2.5	13.7	A	--	--	50.0	4	1	1	1	--
SN 068-0105	OUTSIDE SHOULDER (SB)	76.9	--	10.0	20.2	2.5	13.7	A	--	--	75.0	4	1	1	1	--
I-55 MONTGOMERY COUNTY SUB-TOTAL:									750.0	6.0	4537.5	158.0	39.0	39.0	33.0	6.0

PLOT DATE = 5/10/2007  
 FILE NAME = c:\p\projects\4652406\shschr.dgn  
 PLOT SCALE = 1/8"=1'-0" / IN.  
 USER NAME = laughlin-1

REVISIONS	
NAME	DATE

ILLINOIS DEPARTMENT OF TRANSPORTATION  
 SCHEDULE OF QUANTITIES  
 FAI 55  
 SECTION D-6 MEDIAN PROTECTION 2007  
 MACOUPIN, MONTGOMERY,  
 SANGAMON, LOGAN COUNTIES

F.A.I. RTE.	SECTION	COUNTY	TOTAL SHEETS	SHEET NO.
55	*	**	13	6

STA.	TO STA.
FED. ROAD DIST. NO.	ILLINOIS FED. AID PROJECT

\* - D-6 MEDIAN PROTECTION 2007  
 \*\* - MACOUPIN, MONTGOMERY, SANGAMON, AND LOGAN COUNTIES

SCHEDULE FOR PROPOSED SAFETY IMPROVEMENTS

GENERAL LOCATION	DESCRIPTION OF HAZARD	I-55 STA OF HAZARD (MILE STA)	EXISTING MEDIAN WIDTH (FOOT)	EXISTING SHOULDER WIDTH (FOOT)	HAZARD OFFSET FROM EDGE OF PAVEMENT (FOOT)	WIDTH OF HAZARD (FOOT)	LENGTH OF HAZARD (FOOT)	PROPOSED IMPROVEMENT SEE DETAIL (A, B, OR C)	GUARDRAIL REMOVAL (FOOT)	TRAFFIC BARRIER TERMINAL REMOVAL (EACH)	SPBGR TYPE A (FOOT)	GUARDRAIL REFLECTORS (EACH)	TRAFFIC BARRIER TERMINAL TYPE 1, SPL (TANGENT) (EACH)	TERMINAL MARKER - DIRECT APPLIED (EACH)	TRAFFIC BARRIER TERMINAL TYPE 2 (EACH)	TRAFFIC BARRIER TERMINAL TYPE 6 SPECIAL (EACH)
I-55 SANGAMON COUNTY																
(6S0841055R079.8)	SIMPLE SPAN SIGN TRUSS (NB MED.)	79.8	86.5	6.0	29.5	3.0	11.0	A	--	--	87.5	4	1	1	1	--
(6S0841055R079.8)	SIMPLE SPAN SIGN TRUSS (NB OUT.)	79.8	--	--	31.3	3.0	11.0	A	--	--	62.5	4	1	1	1	--
(6S0841055L082.1)	SIMPLE SPAN SIGN TRUSS (SB OUT.)	82.1	--	--	30.6	2.3	10.9	A	--	--	75.0	4	1	1	1	--
(6C0841055R083.2)	CANTILEVER SIGN STRUCTURE (NB OUT.)	83.2	--	--	18.5	3.8	4.1	A	--	--	162.5	4	1	1	1	--
(6S0841055L083.7)	SIMPLE SPAN SIGN TRUSS (SB OUT.)	83.7	--	--	30.8	3.0	13.0	A	--	--	87.5	4	1	1	1	--
SN 084-0115	OUTSIDE SHOULDER (SB)	85.6	--	--	20.8	2.5	14.3	A	--	--	75.0	4	1	1	1	--
SN 084-0115	MEDIAN BRIDGE PIER (NB)	85.7	61.8	10.0	30.5	2.5	14.3	A	--	--	87.5	4	1	1	1	--
SN 084-0115	MEDIAN BRIDGE PIER (SB)	85.7	61.8	10.0	28.8	2.5	14.3	A	--	--	87.5	4	1	1	1	--
SN 084-0081	OUTSIDE SHOULDER (SB)	87.1	--	10.0	32.2	2.5	19.4	B	--	--	125.0	4	1	1	1	--
SN 084-0081	MEDIAN PIER (SB)	87.4	63.4	10.0	29.1	2.5	19.4	A	--	--	87.5	4	1	1	1	--
SN 084-0018	MEDIAN SHOULDER (NB)	102.4	--	--	--	--	--	C	--	1	312.5	5	1	1	--	1
SN 084-0017	MEDIAN SHOULDER (SB)	102.5	--	--	--	--	--	C	--	1	312.5	5	1	1	--	1
SN 084-0020	MEDIAN SHOULDER (NB)	104.3	--	--	--	--	--	C	--	1	325.0	5	1	1	--	1
(6C0841055L107.2)	CANTILEVER SIGN STR (SB OUT.)	107.2	--	--	17.5	4.5	4.5	A	--	--	175.0	4	1	1	1	--
I-55 SANGAMON COUNTY SUB-TOTAL:									0.0	3.0	2062.5	59.0	14.0	14.0	11.0	3.0

PLOT DATE = 5/10/2007  
 FILE NAME = c:\p\projects\4652406\shsch.dgn  
 PLOT SCALE = 1/8"=1'-0" / IN.  
 USER NAME = laughlin-1

REVISIONS	
NAME	DATE

ILLINOIS DEPARTMENT OF TRANSPORTATION  
 SCHEDULE OF QUANTITIES  
 FAI 55  
 SECTION D-6 MEDIAN PROTECTION 2007  
 MACOUPIN, MONTGOMERY,  
 SANGAMON, LOGAN COUNTIES

F.A.I. RTE.	SECTION	COUNTY	TOTAL SHEETS	SHEET NO.
55	*	**	13	7

STA.	TO STA.
FED. ROAD DIST. NO.	ILLINOIS FED. AID PROJECT

\* - D-6 MEDIAN PROTECTION 2007  
 \*\* - MACOUPIN, MONTGOMERY, SANGAMON, AND LOGAN COUNTIES

SCHEDULE FOR PROPOSED SAFETY IMPROVEMENTS

GENERAL LOCATION	DESCRIPTION OF HAZARD	I-55 STA OF HAZARD	EXISTING MEDIAN WIDTH	EXISTING SHOULDER WIDTH	HAZARD OFFSET FROM EDGE OF PAVEMENT	WIDTH OF HAZARD	LENGTH OF HAZARD	PROPOSED IMPROVEMENT SEE DETAIL	GUARDRAIL REMOVAL	TRAFFIC BARRIER TERMINAL REMOVAL	SPBGR TYPE A	GUARDRAIL REFLECTORS	TRAFFIC BARRIER TERMINAL TYPE 1, SPL (TANGENT)	TERMINAL MARKER - DIRECT APPLIED	TRAFFIC BARRIER TERMINAL TYPE 2	TRAFFIC BARRIER TERMINAL TYPE 6 SPECIAL
		(MILE STA)	(FOOT)	(FOOT)	(FOOT)	(FOOT)	(FOOT)	(A, B, OR C)	(FOOT)	(EACH)	(FOOT)	(EACH)	(EACH)	(EACH)	(EACH)	(EACH)
I-55 LOGAN COUNTY																
SN 054-0038	MEDIAN PIER (NB)	114.5	--	--	--	--	--	--	450.0	2	450.0	5	1	1	1	--
SN 054-0039	MEDIAN PIER (NB)	119.5	62.6	10.0	30.2	2.5	63.2	A	--	--	125.0	4	1	1	1	--
SN 054-0039	MEDIAN PIER (SB)	119.5	62.6	10.0	29.9	2.5	63.2	A	--	--	125.0	4	1	1	1	--
SN 054-0040	MEDIAN PIER (NB)	122.6	54.8	6.0	26.7	2.5	80.4	A	--	--	150.0	4	1	1	1	--
SN 054-0040	MEDIAN PIER (SB)	122.6	54.8	6.0	25.7	2.5	80.4	A	--	--	150.0	4	1	1	1	--
SN 054-0042	MEDIAN (NB)	123.5	--	10.0	54.0	--	--	C	87.5	1	312.5	5	1	1	--	1
SN 054-0041	MEDIAN (SB)	123.7	--	10.0	54.0	--	--	C	87.5	1	312.5	5	1	1	--	1
SN 054-0043	MEDIAN (NB)	124.1	--	10.0	54.0	--	--	C	87.5	1	312.5	4	1	1	--	1
SN 054-0045	MEDIAN PIER (NB)	125.0	55.4	6.0	26.8	2.5	26.6	A	--	--	87.5	4	1	1	1	--
SN 054-0045	MEDIAN PIER (SB)	125.0	55.4	6.0	26.1	2.5	26.6	A	--	--	87.5	4	1	1	1	--
SN 054-0047	MEDIAN (NB)	125.8	--	10.0	54.7	1.0	--	C	87.5	1	287.5	4	1	1	--	1
SN 054-0047	MEDIAN (NB)	125.9	--	--	--	--	--	C	75.0	1	287.5	4	1	1	--	1
6S054I055R125.9	SIMPLE SPAN SIGN TRUSS (NB OUT.)	125.9	--	--	58.6	3.0	13.0	A	--	--	100.0	4	1	1	1	--
6S054I055L126.2	SIMPLE SPAN SIGN TRUSS (SB OUT.)	126.2	--	10.0	53.0	2.0	10.0	B	--	--	25.0	4	1	1	1	--
6S054I055L126.2	SIMPLE SPAN SIGN TRUSS (NB MED.)	126.2	55.9	6.0	38.9	2.0	10.0	B	--	--	125.0	4	1	1	1	--
SN 054-0049	MEDIAN (NB)	126.3	--	10.0	53.5	1.0	--	C	87.5	1	287.5	4	1	1	--	1
SN 054-0048	MEDIAN (SB)	126.4	--	10.0	88.8	1.0	--	C	118.8	1	387.5	5	1	1	--	1
6S054I055L126.5	SIMPLE SPAN SIGN TRUSS (SB MED.)	126.5	>200	10.0	29.6	3.0	13.0	A	--	--	87.5	4	1	1	1	--
6S054I055R126.7	SIMPLE SPAN SIGN TRUSS (NB MED.)	126.7	>250	6.0	30.6	3.0	13.0	A	--	--	87.5	4	1	1	1	--
6S054I055R126.7	SIMPLE SPAN SIGN TRUSS (NB OUT.)	126.7	--	--	--	--	--	A	--	--	87.5	4	1	1	1	--
6S054I055L127.6	SIMPLE SPAN SIGN TRUSS (SB OUT.)	127.6	--	10.0	52.0	3.0	12.8	A	--	--	37.5	4	1	1	1	--
6S054I055L127.6	SIMPLE SPAN SIGN TRUSS (SB MED.)	127.6	>200	6.0	29.8	3.0	13.0	A	--	--	87.5	4	1	1	1	--
6S054I055L128.2	SIMPLE SPAN SIGN TRUSS (NB MED.)	128.2	88.2	6.0	45.6	2.9	13.0	A	--	--	50.0	4	1	1	1	--
6S054I055L128.2	SIMPLE SPAN SIGN TRUSS (SB MED.)	128.2	88.2	6.0	39.7	2.9	13.0	A	--	--	62.5	4	1	1	1	--
SN 054-0052	MEDIAN PIER (NB)	128.6	88.0	6.0	42.5	2.5	38.9	A *	--	--	87.5	4	1	1	1	--
SN 054-0052	MEDIAN PIER (SB)	128.6	88.0	6.0	43.0	2.5	38.9	A *	--	--	87.5	4	1	1	1	--
SN 054-0053	MEDIAN (NB)	129.0	--	6.0	83.0	1.0	--	C	118.8	1	262.5	4	1	1	--	1
SN 054-0054	MEDIAN (SB)	129.1	--	6.0	83.0	1.0	--	C	118.8	1	262.5	4	1	1	--	1
SN 054-0055	MEDIAN (NB)	129.4	--	6.0	83.0	1.0	--	C	118.8	1	350.0	5	1	1	--	1
SN 054-0056	MEDIAN (SB)	129.5	--	6.0	83.0	1.0	--	C	118.8	1	350.0	5	1	1	--	1
SN 054-0057	MEDIAN (NB)	129.8	--	6.0	83.0	1.0	--	C	118.8	1	362.5	5	1	1	--	1
SN 054-0058	MEDIAN (SB)	129.9	--	6.0	83.0	1.0	--	C	118.8	1	362.5	5	1	1	--	1
SN 054-0059	MEDIAN PIER (NB)	130.2	88.6	6.0	42.6	2.5	29.3	A	--	--	62.5	4	1	1	1	--
SN 054-0059	MEDIAN PIER (SB)	130.2	88.6	6.0	43.5	2.5	29.3	A	--	--	62.5	4	1	1	1	--
SN 054-0061	MEDIAN (NB)	132.1	--	6.0	80.0	1.0	--	C	118.8	1	300.0	5	1	1	--	1
SN 054-0060	MEDIAN (SB)	132.3	--	6.0	80.0	1.0	--	C	118.8	1	300.0	5	1	1	--	1
6C054I055L132.7	CANTILEVER SIGN STR (SB OUT.)	132.7	--	--	54.0	3.5	3.5	A	--	--	25.0	4	1	1	1	--
SN 054-0062	OUTSIDE (SB)	135.6	--	11.0	42.3	2.5	10.0	A	--	--	50.0	4	1	1	1	--
SN 054-0062	MEDIAN PIER (NB)	135.6	87.2	6.0	42.4	2.5	10.0	B	--	--	62.5	4	1	1	1	--
SN 054-0062	MEDIAN PIER (SB)	135.6	87.2	6.0	42.3	2.5	10.0	B	--	--	62.5	4	1	1	1	--
SN 054-0063	MEDIAN (NB)	135.7	--	6.0	82.0	1.0	--	C	118.8	1	337.5	5	1	1	--	1
SN 054-0064	MEDIAN (SB)	135.7	--	6.0	82.0	1.0	--	C	118.8	1	337.5	5	1	1	--	1
SN 054-0065	MEDIAN (NB)	139.0	--	6.0	82.5	1.0	--	C	118.8	1	362.5	5	1	1	--	1
SN 054-0066	MEDIAN (SB)	139.1	--	6.0	82.5	1.0	--	C	118.8	1	362.5	5	1	1	--	1
SN 054-0067	MEDIAN (NB)	139.5	--	6.0	82.0	1.0	--	C	118.8	1	350.0	5	1	1	--	1
SN 054-0068	MEDIAN (SB)	139.5	--	6.0	82.0	1.0	--	C	118.8	1	350.0	5	1	1	--	1
SN 054-0069	MEDIAN PIER (NB)	139.7	87.5	6.0	42.0	3.0	79.0	A	--	--	125.0	4	1	1	1	--
SN 054-0069	MEDIAN PIER (SB)	139.7	87.5	6.0	42.5	3.0	79.0	A	--	--	125.0	4	1	1	1	--
I-55 LOGAN COUNTY SUB-TOTAL:									2744.5	23.0	9512.5	208.0	48.0	48.0	27.0	21.0

REVISIONS	
NAME	DATE

ILLINOIS DEPARTMENT OF TRANSPORTATION  
 SCHEDULE OF QUANTITIES  
 FAI 55  
 SECTION D-6 MEDIAN PROTECTION 2007  
 MACOUPIN, MONTGOMERY,  
 SANGAMON, LOGAN COUNTIES

PLOT DATE = 5/10/2007  
 FILE NAME = c:\p\projects\4652406\shsch.dgn  
 PLOT SCALE = 1/8"=1'-0" / IN.  
 USER NAME = laughlin-1

F.A.I. RTE.	SECTION	COUNTY	TOTAL SHEETS	SHEET NO.
55	*	**	13	8

STA.	TO STA.
FED. ROAD DIST. NO.	ILLINOIS FED. AID PROJECT

\* - D-6 MEDIAN PROTECTION 2007  
 \*\* - MACOUPIN, MONTGOMERY, SANGAMON, AND LOGAN COUNTIES

SUMMARY								
GENERAL LOCATION	GUARDRAIL REMOVAL	TRAFFIC BARRIER TERMINAL REMOVAL	SPBGR TYPE A	GUARDRAIL REFLECTORS	TRAFFIC BARRIER TERMINAL TYPE 1, SPL (TANGENT)	TERMINAL MARKER - DIRECT APPLIED	TRAFFIC BARRIER TERMINAL TYPE 2	TRAFFIC BARRIER TERMINAL TYPE 6 SPECIAL
	( FOOT )	( EACH )	( FOOT )	( EACH )	( EACH )	( EACH )	( EACH )	( EACH )
I-55 MACOUPIN COUNTY SUB-TOTAL:	250	2	1987.5	66	16	16	14	2
I-55 MONTGOMERY COUNTY SUB-TOTAL:	750	6	4537.5	158	39	39	33	6
I-55 SANGAMON COUNTY SUB-TOTAL:	0	3	2062.5	59	14	14	11	3
I-55 LOGAN COUNTY SUB-TOTAL:	2744.5	23	9512.5	208	48	48	27	21
TOTAL:	3744.5	34	18100	491	117	117	85	32

PLOT DATE = 5/10/2007  
 FILE NAME = c:\p\projects\4652406\shsch.dgn  
 PLOT SCALE = 1/8"=1'-0" / IN.  
 USER NAME = laughlin-1

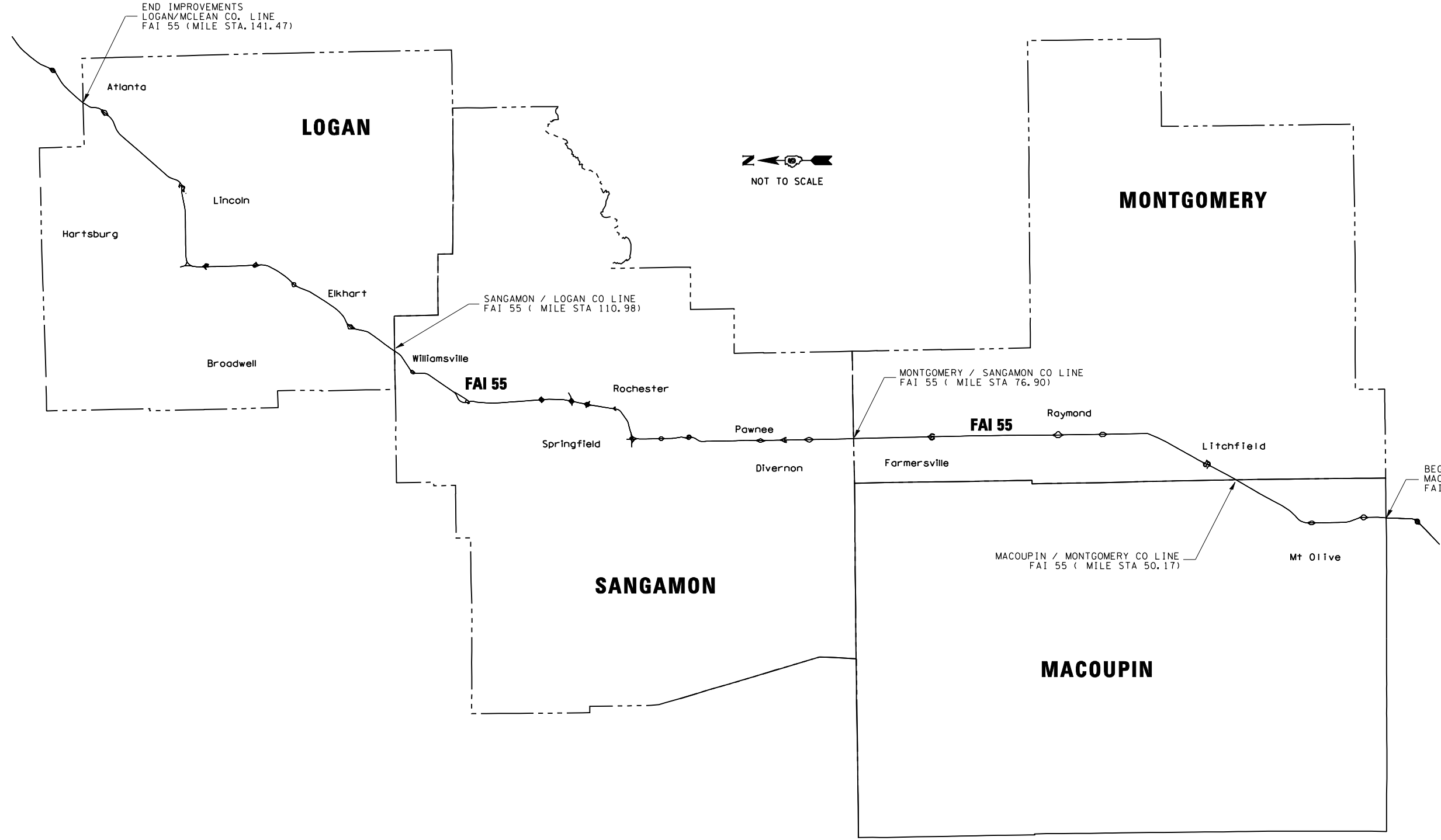
REVISIONS	
NAME	DATE

ILLINOIS DEPARTMENT OF TRANSPORTATION  
 SCHEDULE OF QUANTITIES  
 FAI 55  
 SECTION D-6 MEDIAN PROTECTION 2007  
 MACOUPIN, MONTGOMERY,  
 SANGAMON, LOGAN COUNTIES



F.A.I. RTE.	SECTION	COUNTY	TOTAL SHEETS	SHEET NO.
55	*	**	13	9
STA.		TO STA.		
FED. ROAD DIST. NO.	ILLINOIS	FED. AID PROJECT		

\* - D-6 MEDIAN PROTECTION 2007  
 \*\* - MACOUPIN, MONTGOMERY, SANGAMON, AND LOGAN COUNTIES



BEGIN IMPROVEMENTS  
 MACOUPIN / MADISON CO LINE  
 FAI 55 ( MILE STA 38.91)

PLOT DATE = 5/10/2007  
 FILE NAME = c:\p\projects\d652906\sh\planschematic.dgn  
 PLOT SCALE = 1/8"=1'-0" / IN.  
 USER NAME = laughlin-1

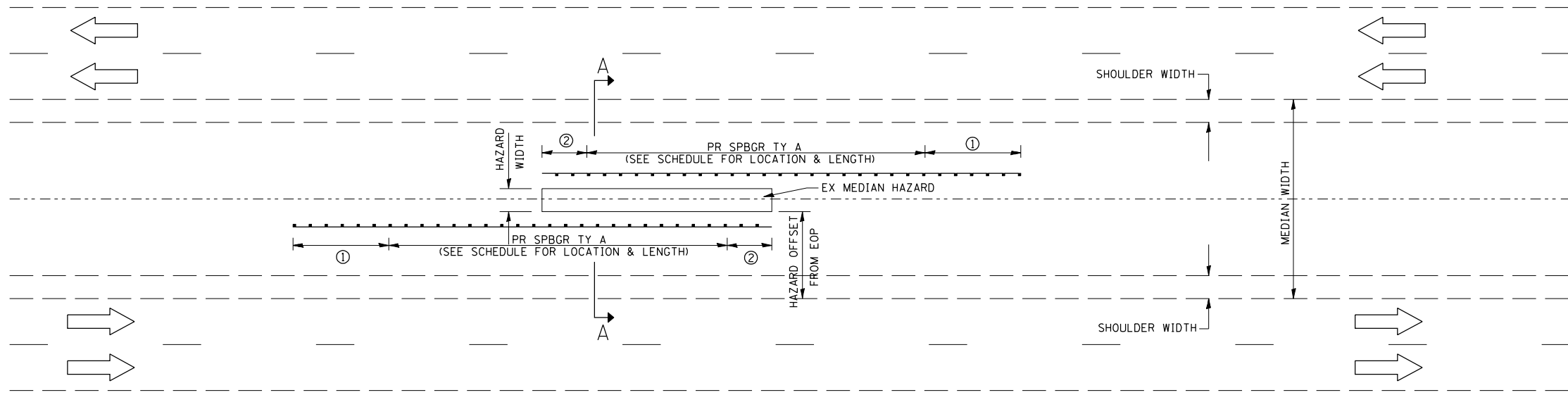
REVISIONS	
NAME	DATE

ILLINOIS DEPARTMENT OF TRANSPORTATION  
 PLAN SHEET  
 FAI 55  
 SECTION D-6 MEDIAN PROTECTION 2007  
 MACOUPIN, MONTGOMERY,  
 SANGAMON, LOGAN COUNTIES

F.A.I. RTE.	SECTION	COUNTY	TOTAL SHEETS	SHEET NO.
55	*	**	13	10

STA.	TO STA.
FED. ROAD DIST. NO.	ILLINOIS FED. AID PROJECT

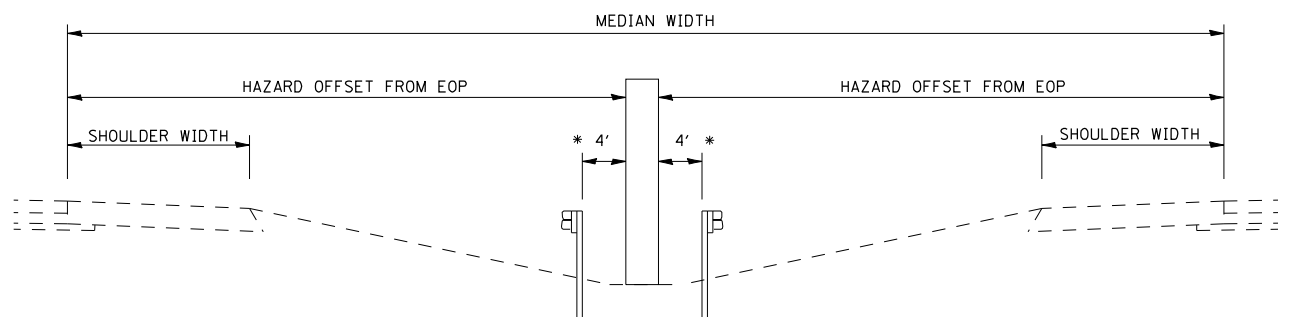
\* - D-6 MEDIAN PROTECTION 2007  
 \*\* - MACOUPIN, MONTGOMERY, SANGAMON, AND LOGAN COUNTIES



**DETAIL "A"**

(PROPOSED PROTECTION OF MEDIAN HAZARD WITH PROPOSED GUARDRAIL)

- ① PR TRAFFIC BARRIER TERMINAL, TYPE 1, SPECIAL (TANGENT)
- ② PR TRAFFIC BARRIER TERMINAL, TYPE 2  
NOTE: TYPE 2 TERMINATES AT END OF HAZARD



\* AT SELECT LOCATIONS IDENTIFIED IN THE SCHEDULE OF QUANTITIES AS A \*, THE GUARDRAIL SHALL BE OFFSET 5' FROM THE PIER IN ORDER TO MISS CONFLICTING SPREAD FOOTINGS.

**SECTION A-A**  
(TYPICAL CROSS SECTION)

REVISIONS	
NAME	DATE

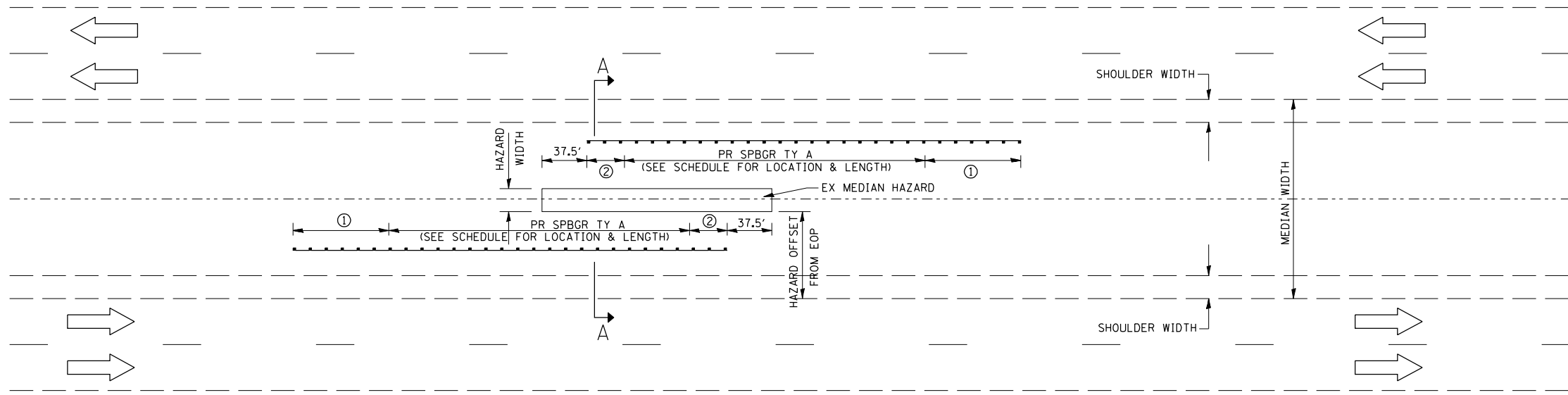
ILLINOIS DEPARTMENT OF TRANSPORTATION  
 DETAIL "A"  
 FAI 55  
 SECTION D-6 MEDIAN PROTECTION 2007  
 MACOUPIN, MONTGOMERY,  
 SANGAMON, LOGAN COUNTIES

PLOT DATE = 5/10/2007  
 FILE NAME = c:\p\projects\d652906\shdetalls.dgn  
 PLOT SCALE = 1/8" = 1' / IN.  
 USER NAME = laughlin-1

F.A.I. RTE.	SECTION	COUNTY	TOTAL SHEETS	SHEET NO.
55	*	**	13	11

FED. ROAD DIST. NO.	ILLINOIS	FED. AID PROJECT

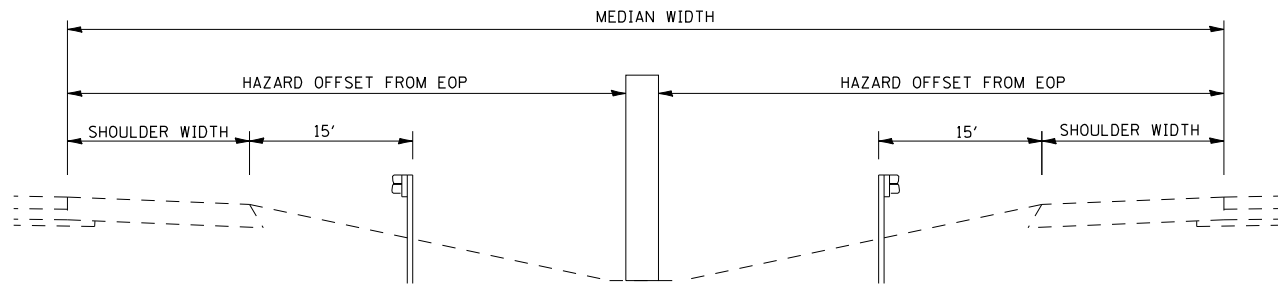
STA. TO STA.  
 \* - D-6 MEDIAN PROTECTION 2007  
 \*\* - MACOUPIN, MONTGOMERY, SANGAMON, AND LOGAN COUNTIES



**DETAIL "B"**

(PROPOSED PROTECTION OF MEDIAN HAZARD WITH PROPOSED GUARDRAIL)

- ① PR TRAFFIC BARRIER TERMINAL, TYPE 1, SPECIAL (TANGENT)
- ② PR TRAFFIC BARRIER TERMINAL, TYPE 2  
NOTE: TYPE 2 TERMINATES 37.5 FT BEFORE END OF HAZARD



**SECTION A-A**

(TYPICAL CROSS SECTION)

REVISIONS	
NAME	DATE

ILLINOIS DEPARTMENT OF TRANSPORTATION

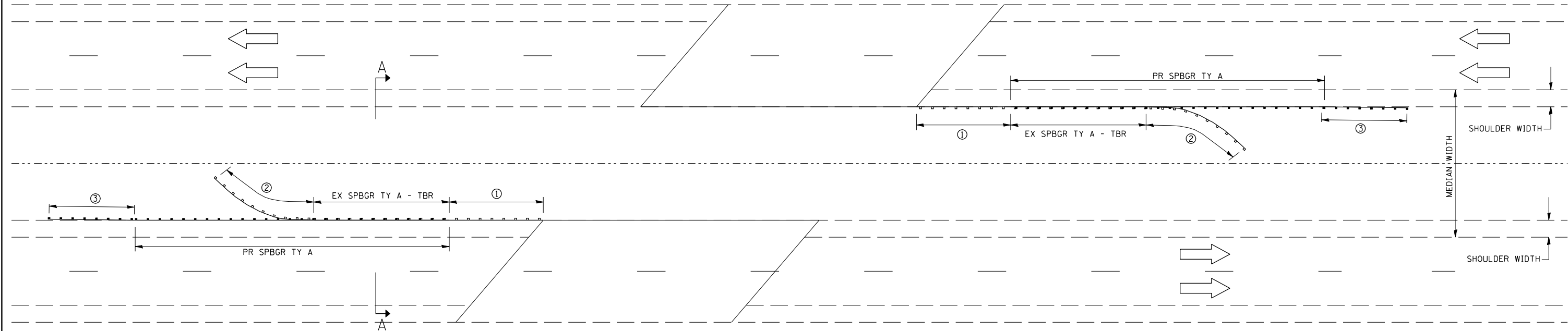
**DETAIL "B"**

FAI 55  
 SECTION D-6 MEDIAN PROTECTION 2007  
 MACOUPIN, MONTGOMERY,  
 SANGAMON, LOGAN COUNTIES

PLOT DATE = 5/10/2007  
 FILE NAME = c:\p\projects\d652906\shdetalls.dgn  
 PLOT SCALE = 1/8" = 1' / IN.  
 USER NAME = laughlin-1

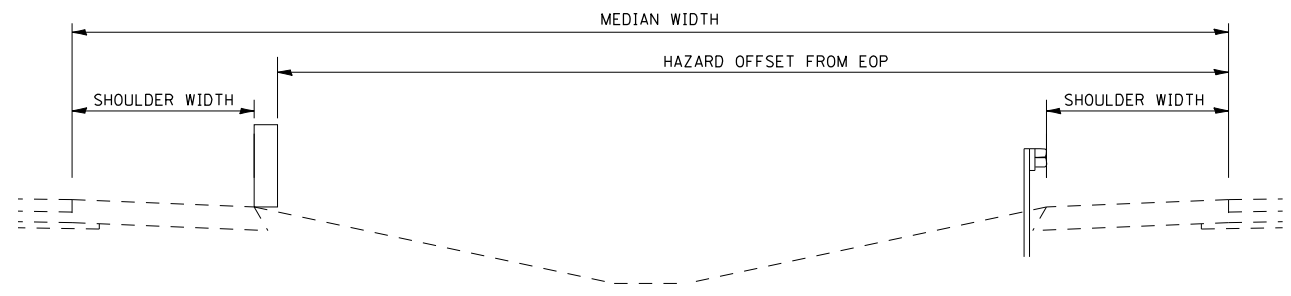
F.A.I. RTE.	SECTION	COUNTY	TOTAL SHEETS	SHEET NO.
55	*	**	13	12
STA.		TO STA.		
FED. ROAD DIST. NO.	ILLINOIS	FED. AID PROJECT		

\* - D-6 MEDIAN PROTECTION 2007  
 \*\* - MACOUPIN, MONTGOMERY, SANGAMON, AND LOGAN COUNTIES



**DETAIL "C"**  
 (PROPOSED PROTECTION OF AT GRADE HAZARD WITH PROPOSED GUARDRAIL IMPROVEMENT)

- ① EX TRAFFIC BARRIER TERMINAL, TYPE 6  
PR TRAFFIC BARRIER TERMINAL, TYPE 6, SPECIAL
- ② EX TRAFFIC BARRIER TERMINAL, TYPE 4 - TO BE REMOVED
- ③ PR TRAFFIC BARRIER TERMINAL, TYPE 1 - TANGENT



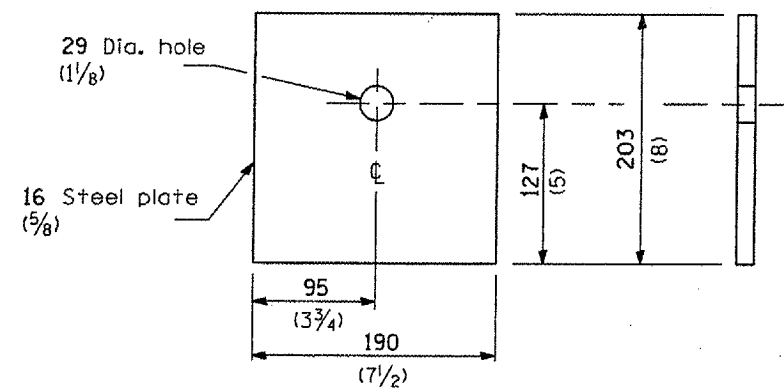
**SECTION A-A**  
 (TYPICAL CROSS SECTION)

REVISIONS	
NAME	DATE

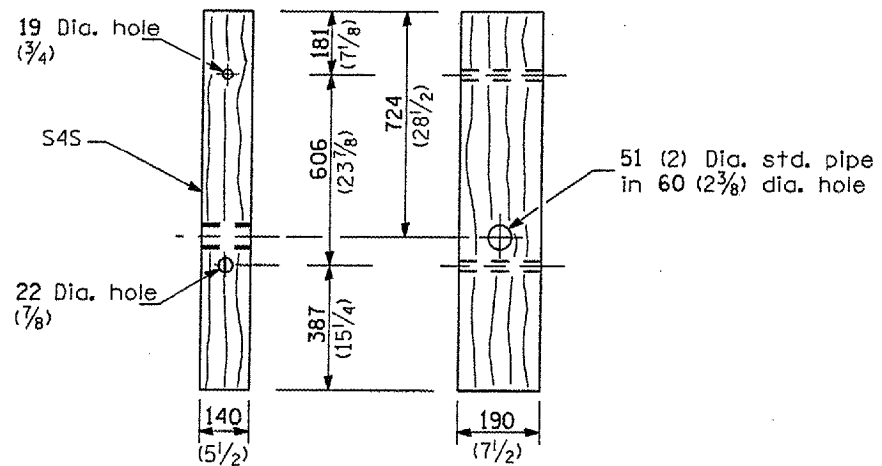
ILLINOIS DEPARTMENT OF TRANSPORTATION  
**DETAIL "C"**  
 FAI 55  
 SECTION D-6 MEDIAN PROTECTION 2007  
 MACOUPIN, MONTGOMERY,  
 SANGAMON, LOGAN COUNTIES

PLOT DATE = 5/10/2007  
 FILE NAME = c:\projects\d652906\shdetail.dgn  
 PLOT SCALE = 1/8" = 1' / IN.  
 USER NAME = laughlin

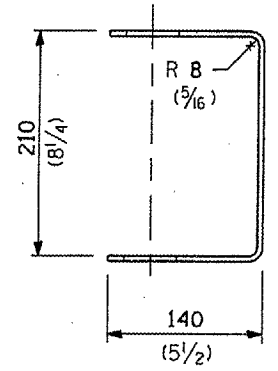
F.A.R. NO.	SECTION	COUNTY	TOTAL SHEETS	SHEET NO.
53	D-6Mcd.	VOR.	13	13A
FED. ROAD DIST. NO.		ILLINOIS FED. AID PROJECT		



**BEARING PLATE K**

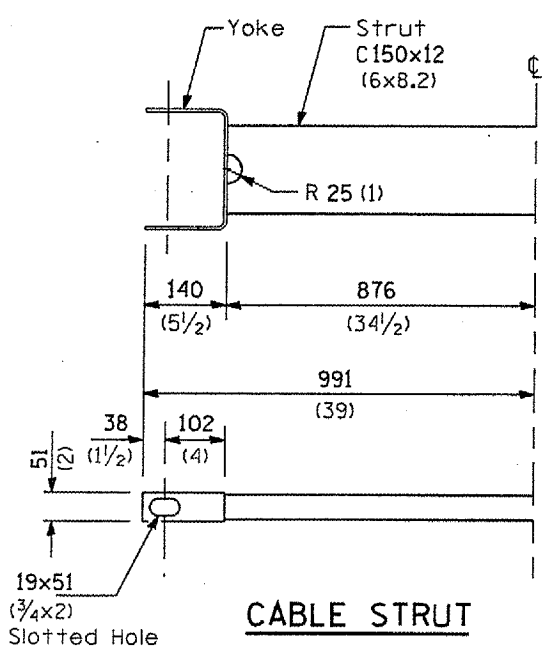


**WOOD POST**

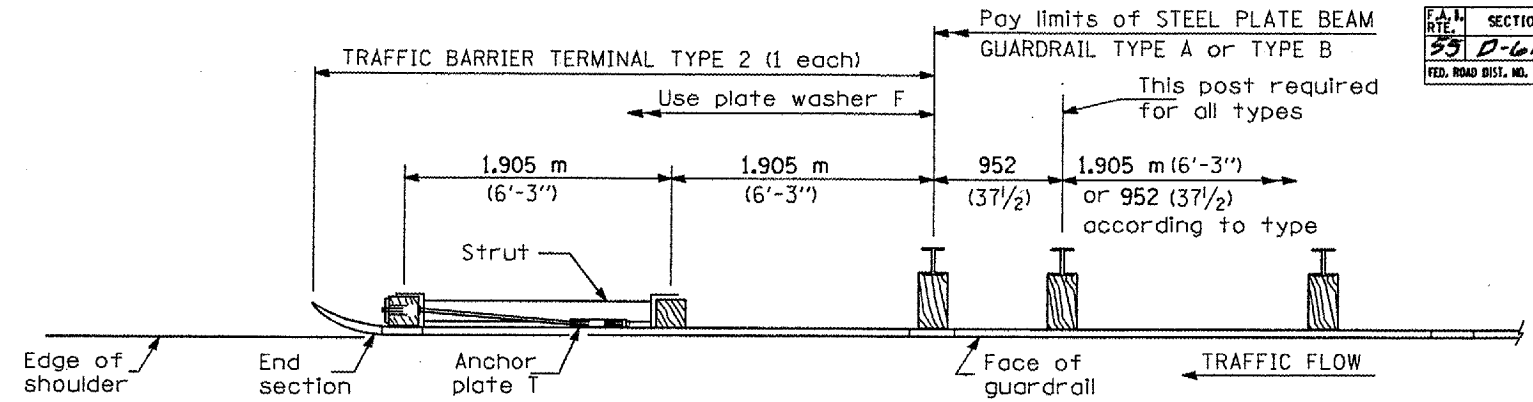


**YOKE**

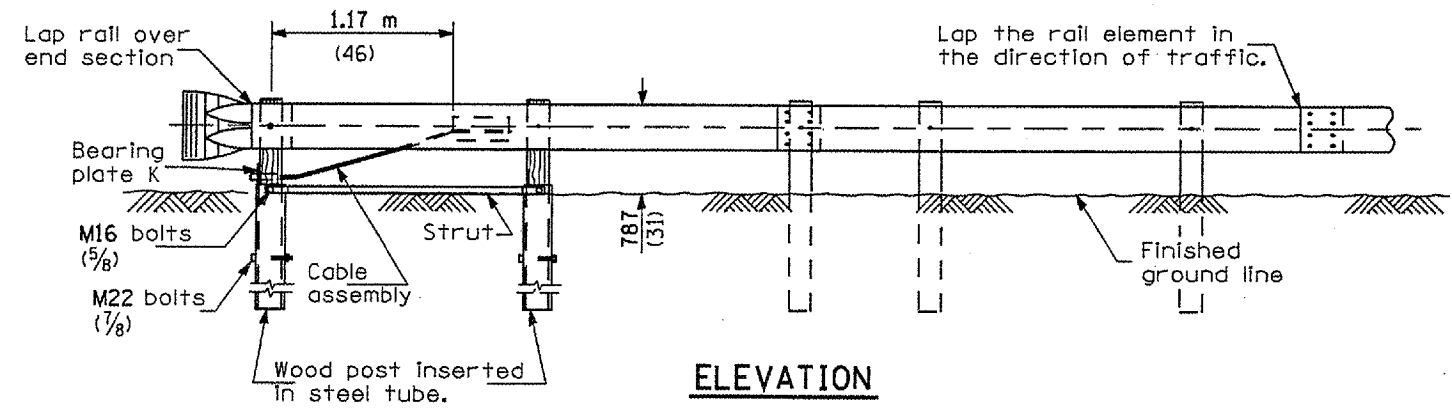
5 (3/16) thick steel



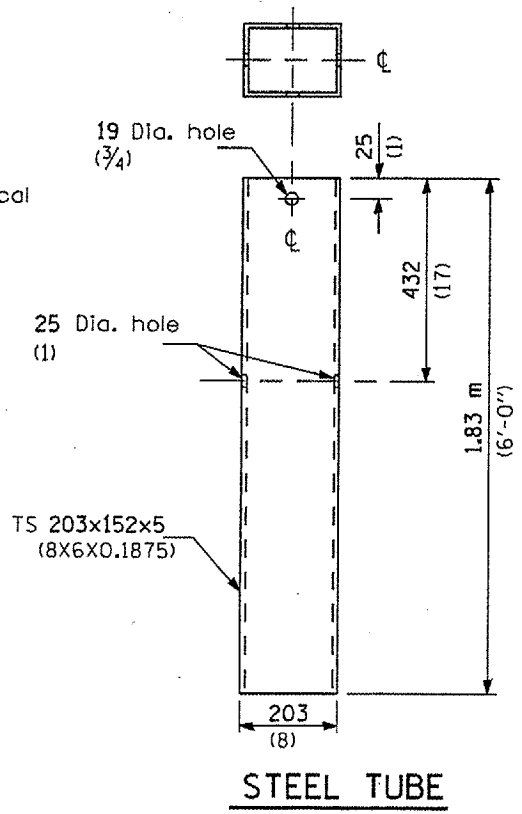
**CABLE STRUT**



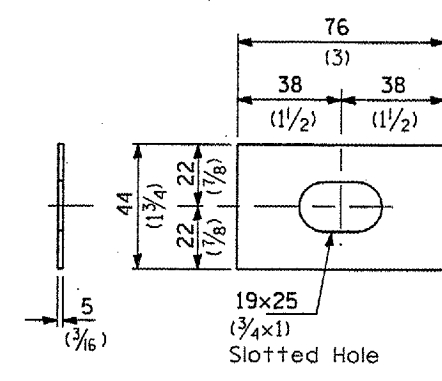
**PLAN**



**ELEVATION**



**STEEL TUBE**



**PLATE WASHER F**

**GENERAL NOTES**

See Standard 630001 for details of guardrail not shown.  
 The bearing plate K shall be held in position by (2) two eight penny nails driven into the post and bent over the top of the plate.  
 All dimensions are in millimeters (inches) unless otherwise shown.

<p><b>TRAFFIC BARRIER TERMINAL, TYPE 2</b></p>
<p><b>DETAIL</b></p>