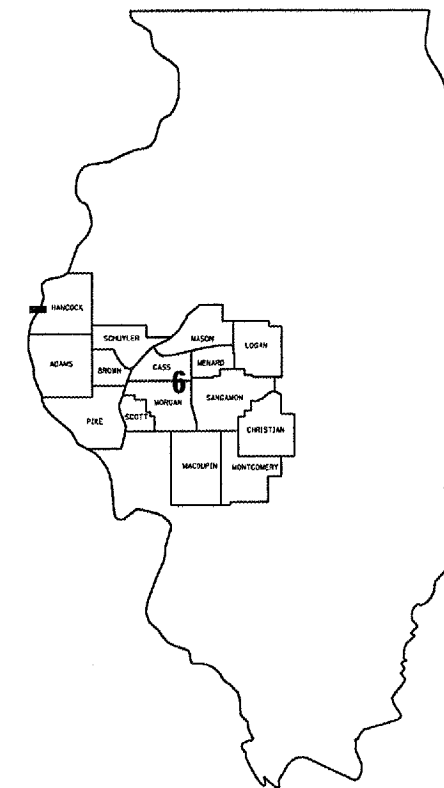
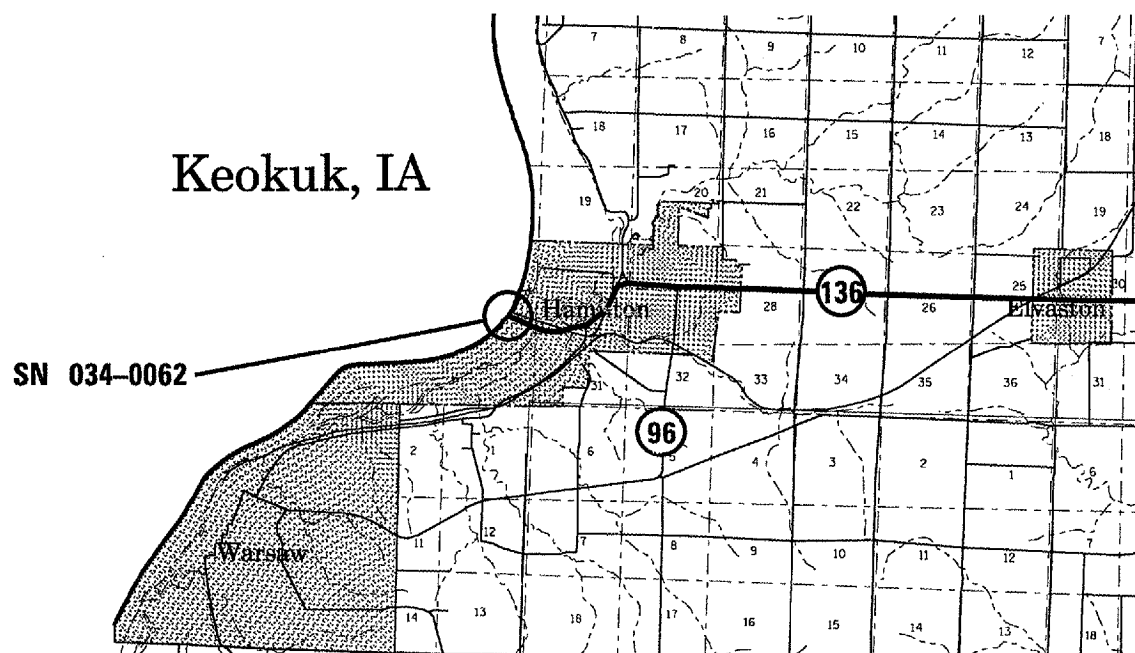


FOR INDEX OF SHEETS AND HIGHWAY
STANDARDS, SEE SHEET 2.

STATE OF ILLINOIS
DEPARTMENT OF TRANSPORTATION
DIVISION OF HIGHWAYS
**PROPOSED
HIGHWAY PLANS**
FAP ROUTE 315 (US 136)
SECTION (22B)L
HANCOCK COUNTY
C96-510-08 / D96-546-07



LOCATION OF SECTION INDICATED THUS: ■



STATE OF ILLINOIS
DEPARTMENT OF TRANSPORTATION
DIVISION OF HIGHWAYS

SUBMITTED March 29, 2007

Justin Reed
DEPUTY DIRECTOR OF HIGHWAYS, REGION FOUR ENGINEER

May 11, 2007

Eric E. Horn
Interim ENGINEER OF DESIGN AND ENVIRONMENT

May 11, 2007

Milton K. Seep
DIRECTOR, DIVISION OF HIGHWAYS

J. U. L. I. E.
JOINT UTILITY LOCATION INFORMATION FOR EXCAVATION
1-800-892-0123

D6 BRIDGE ENGINEER: STEVE BERAN
PHONE: (217) 785-9290

NET LTH OF SEC 3340 FT = 0.63 MILE

CONTRACT NO. 72A69

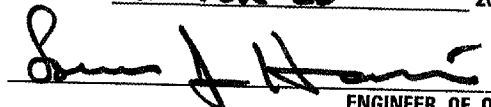

INDEX OF SHEETS

- 1 COVER SHEET
- 2 INDEX, STANDARDS, & GENERAL NOTES
- 3 SUMMARY OF QUANTITIES
- 4 SCHEDULE OF QUANTITIES
- 5-11 BRIDGE PLAN & PROFILE
- 12-13 CONTROLLER INSTALLATION DUAL

STANDARDS

- 701101-01
- 701106-01
- 701601-04
- 701701-04
- 701801-03
- 702001-06

GENERAL NOTES

STATE OF ILLINOIS DEPARTMENT OF TRANSPORTATION DIVISION OF HIGHWAYS DISTRICT 6	
EXAMINED <u>March 26</u>	<u>20 07</u>
 ENGINEER OF OPERATIONS	
EXAMINED <u>MARCH 29th</u>	<u>20 07</u>
<u>W. E. FREY JR.</u> ENGINEER OF PROGRAM IMPLEMENTATION	
EXAMINED <u>Mar 19</u>	<u>2007</u>
 ENGINEER OF PROGRAM DEVELOPMENT	

INDEX AND GENERAL NOTES
FAP 315 (US 136)
SECTION (22B)L
HANCOCK COUNTY

S U M M A R Y O F Q U A N T I T I E S

CODE NO.	ITEM	UNIT	100% STATE
			Y030-1E TOTAL QTY
67100100	MOBILIZATION	L SUM	1
70102630	TRAFFIC CONTROL AND PROTECTION, STANDARD 701601	L SUM	1
70102635	TRAFFIC CONTROL AND PROTECTION, STANDARD 701701	L SUM	1
70102640	TRAFFIC CONTROL AND PROTECTION, STANDARD 701801	L SUM	1
82102150	LUMINAIRE, SODIUM VAPOR, HORIZONTAL MOUNT, 150 WATT	EACH	18
82107100	UNDERPASS LUMINAIRE, 70 WATT, HIGH PRESSURE SODIUM VAPOR	EACH	2
82107500	UNDERPASS LUMINAIRE, 250 WATT, HIGH PRESSURE SODIUM VAPOR	EACH	3
82500515	LIGHTING CONTROLLER TYPE CB-RCS 60 AMP - 240 VOLT (DUAL)	EACH	1
84200600	REMOVAL OF EXISTING LIGHTING UNIT, NO SALVAGE	EACH	23
X0301588	NAVIGATION OBSTRUCTION LIGHT	EACH	1
X0324135	60 AMP STAINLESS STEEL DISCONNECT SWITCH	EACH	1
X0324579	GROUNDING AND BONDING	L SUM	1
X0325827	ATTACH BONDING CONDUCTOR	EACH	17

QUANTITIES
FAP 315 (US 136)
SECTION (22B)L
HANCOCK COUNTY

REV.

ELECTRICAL SCHEDULE

APPROX. STA	150 W HPS LUMINAIRE	GROUNDING AND BONDING	ATTACH BONDING CONDUCTORS	70 W HPS UNDERPASS LUMINAIRE	250 W HPS UNDERPASS LUMINAIRE	NAVIGATION LUMINAIRE	REMOVE EXISTING LIGHT UNIT	CORRECTING EXP. JT. BONDING	LIGHTING CONTROLLER
61+90	1	1	1				1		
63+70								1	
63+90	1						1		
64+00		1	1						1
64+06				2			2		
65+90	1						1		
66+81		1	1					2	
67+72		1	1		1		1		
67+90	1						1		
69+90	1						1		
70+15		1	1		1		1		
71+76		1	1		1		1		
71+90	1						1		
73+90	1	1	1				1		
75+38		1	1			1	1		
75+90	1						1		
77+90	1	1	1				1		
78+05		1	1					2	
80+08	1	1	1				1		
82+26	1						1		
84+44	1	1	1				1		
84+59		1	1					2	
86+62	1	1	1				1		
88+80	1						1		
90+98	1	1	1				1		
91+13		1	1					2	
93+16	1	1	1				1		
95+34	1						1		
97+00	1	17	17				1		
TOTALS:	18			2	3	1	24	9	1

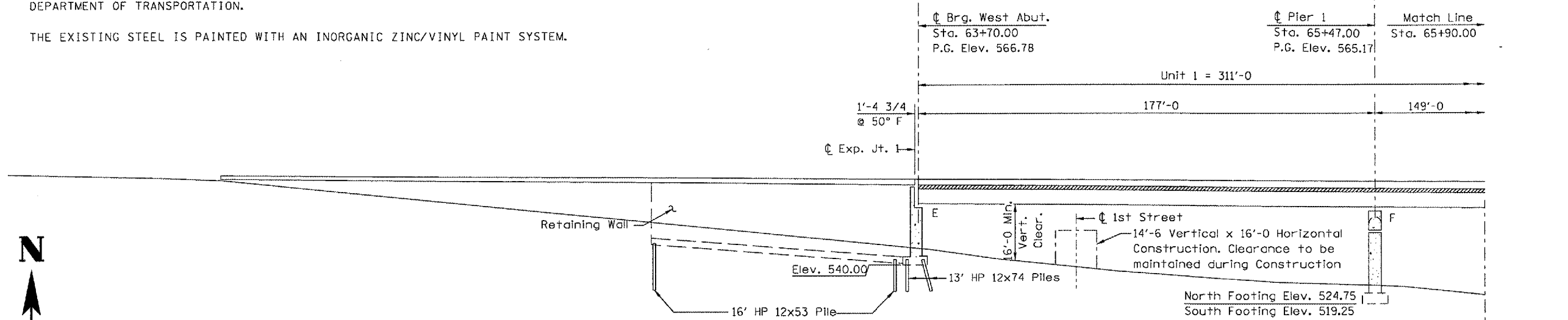
SCHEDULE OF QUANTITIES
FAP 315 (US 136)
SECTION (22B)I
HANCOCK COUNTY

F.A.P. RTE.	SECTION	COUNTY	TOTAL SHEETS	SHEET NO.
315	022BL	HANCOCK	13	5

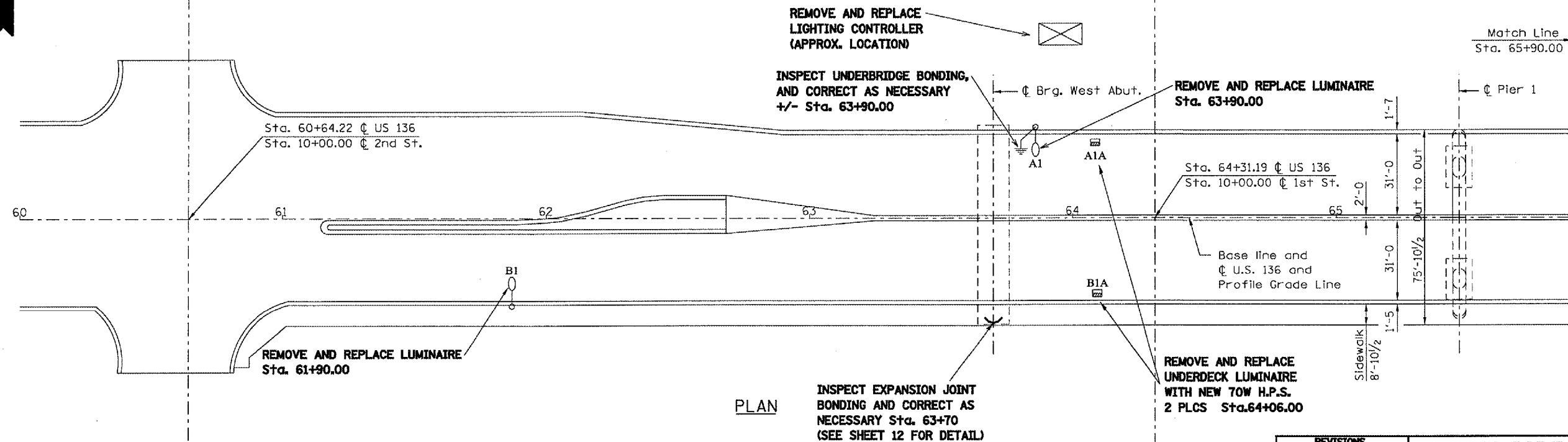
EXISTING STRUCTURE:

SN 034-0062 CONSISTS OF 15 STEEL MULTI-BEAM WELDED PLATE GIRDER SPANS, WITH AN OVERALL LENGTH OF 3,340 FT MEASURED FROM BACK-TO-BACK OF ABUTMENTS, AND A TOTAL DECK WIDTH OF 75' 10". THE BRIDGE ROADWAY, COMPRISED OF TWO LANES IN EACH DIRECTION DIVIDED BY A BARRIER WALL, HAS A TOTAL COMBINED WIDTH OF 62' 0". THERE IS AN 8' 10" WIDE SIDEWALK ON THE SOUTH SIDE OF THE BRIDGE. THE BRIDGE CARRIES US 136 OVER THE MISSISSIPPI RIVER BETWEEN HAMILTON, ILLINOIS, AND KEOKUK, IOWA, AND WAS BUILT IN 1985 UNDER A CONTRACT MANAGED BY THE IOWA DEPARTMENT OF TRANSPORTATION.

THE EXISTING STEEL IS PAINTED WITH AN INORGANIC ZINC/VINYL PAINT SYSTEM.



LONGITUDINAL SECTION ALONG C U.S. 136



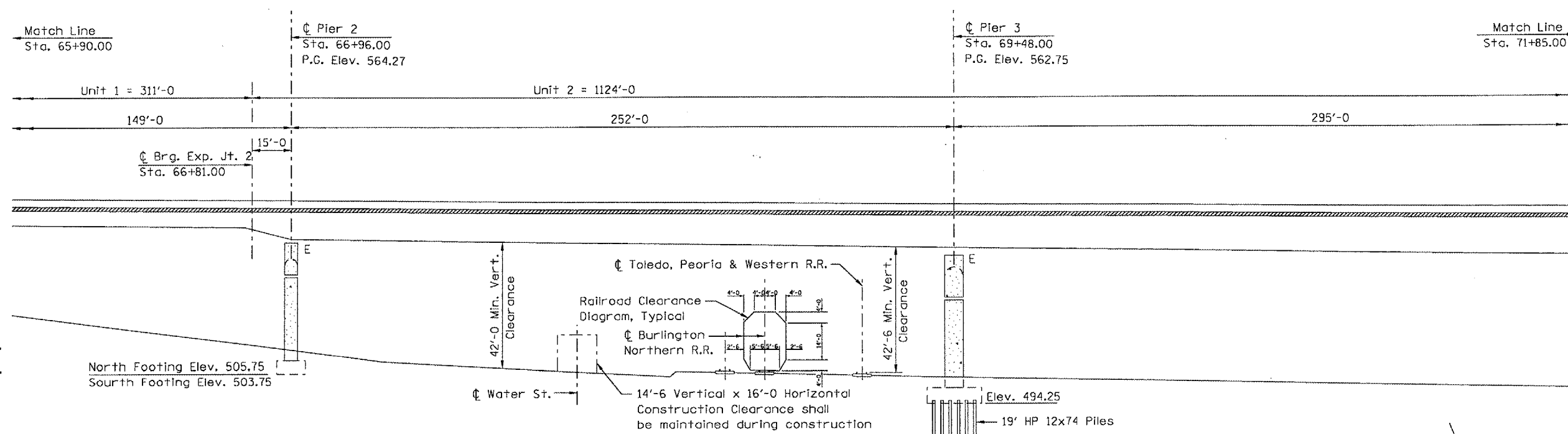
PLAN

REVISIONS	
NAME	DATE

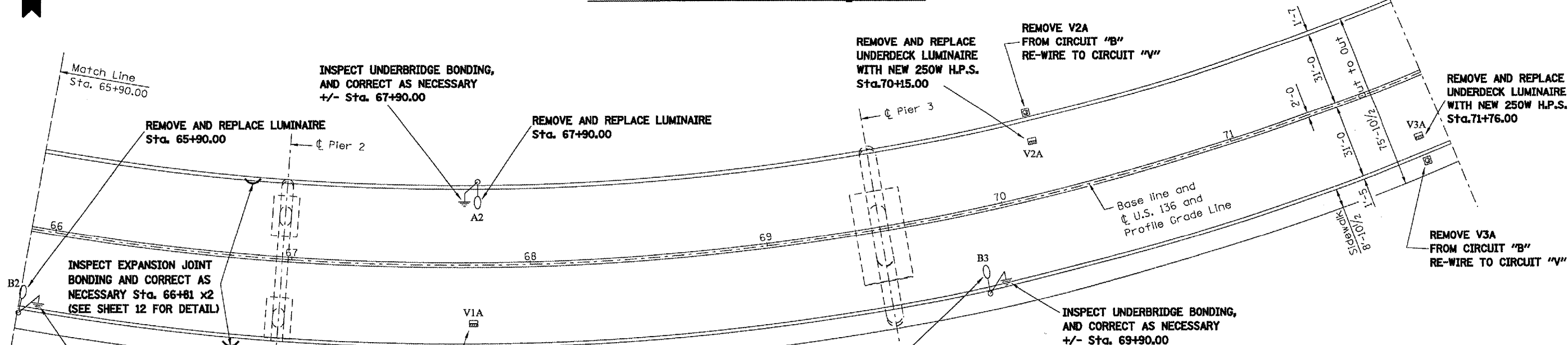
ILLINOIS DEPARTMENT OF TRANSPORTATION
PLAN AND PROFILE
 FAP 315 (US 136)
 SECTION 022BL
 HANCOCK COUNTY

CON-SPEC
 DATE-TIME
 *REF 01

F.A.P. RTE.	SECTION	COUNTY	TOTAL SHEETS	SHEET NO.
315	2281L	HANCOCK	13	6



LONGITUDINAL SECTION ALONG U.S. 136



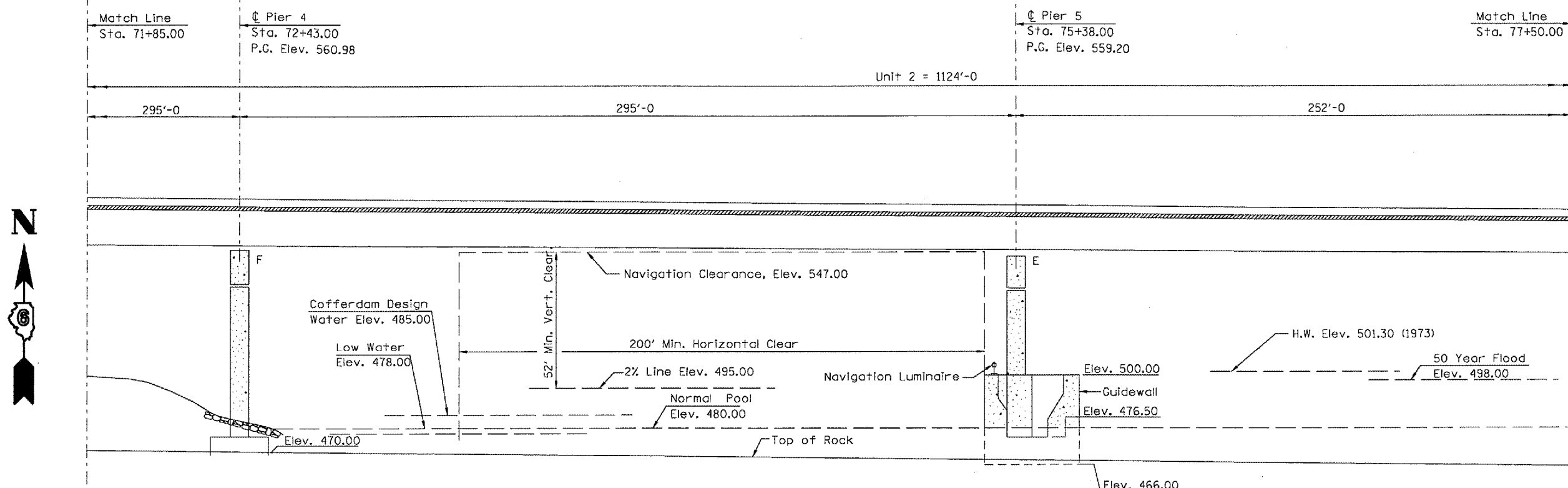
PLAN

REVISIONS	
NAME	DATE

ILLINOIS DEPARTMENT OF TRANSPORTATION
 PLAN AND PROFILE
 FAP 315 (US 136)
 SECTION 2281L
 HANCOCK COUNTY

000-SPEC
 DATE-TIME
 REFBI

F.A.P. RTE.	SECTION	COUNTY	TOTAL SHEETS	SHEET NO.
315	(228)L	HANCOCK	13	7
STA. _____ TO STA. _____		FED. ROAD DIST. NO. _____ ILLINOIS FED. AID PROJECT		



LONGITUDINAL SECTION ALONG ϕ U.S. 136

INSPECT UNDERBRIDGE BONDING, AND CORRECT AS NECESSARY +/- Sta. 71+90.00

REMOVE AND REPLACE LUMINAIRE Sta. 71+90.00

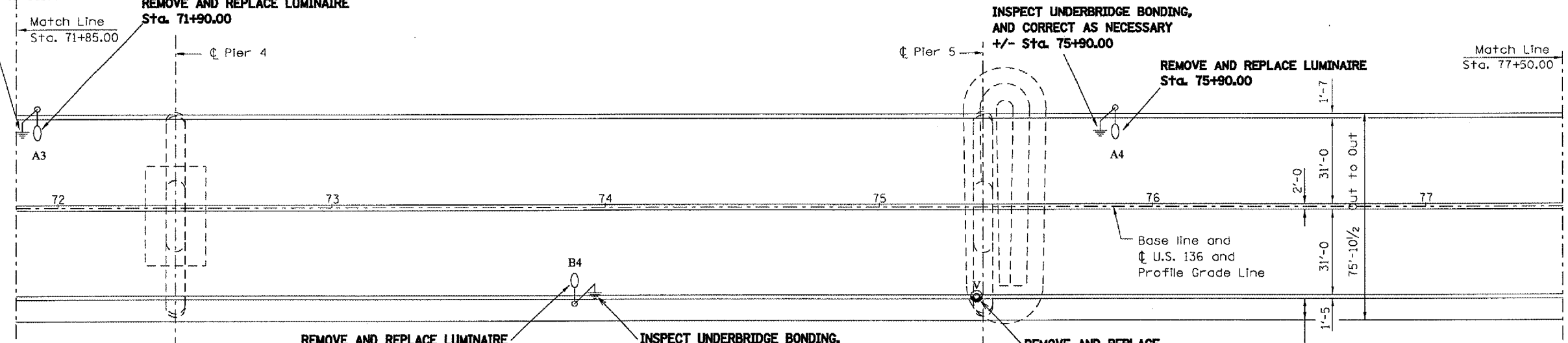
INSPECT UNDERBRIDGE BONDING, AND CORRECT AS NECESSARY +/- Sta. 75+90.00

REMOVE AND REPLACE LUMINAIRE Sta. 75+90.00

REMOVE AND REPLACE LUMINAIRE Sta. 73+90.00

INSPECT UNDERBRIDGE BONDING, AND CORRECT AS NECESSARY +/- Sta. 73+90.00

REMOVE AND REPLACE NAVIGATION LUMINAIRE ATTACHED TO PIER FOOTING +/- Sta. 75+38.00



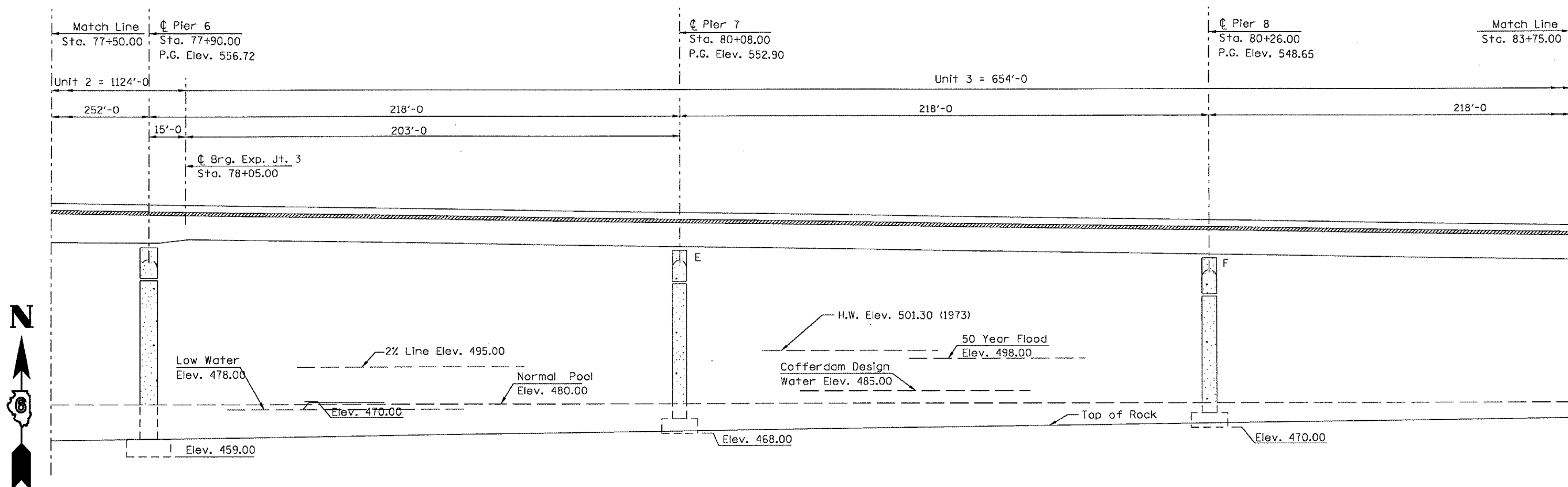
PLAN

REVISIONS	
NAME	DATE

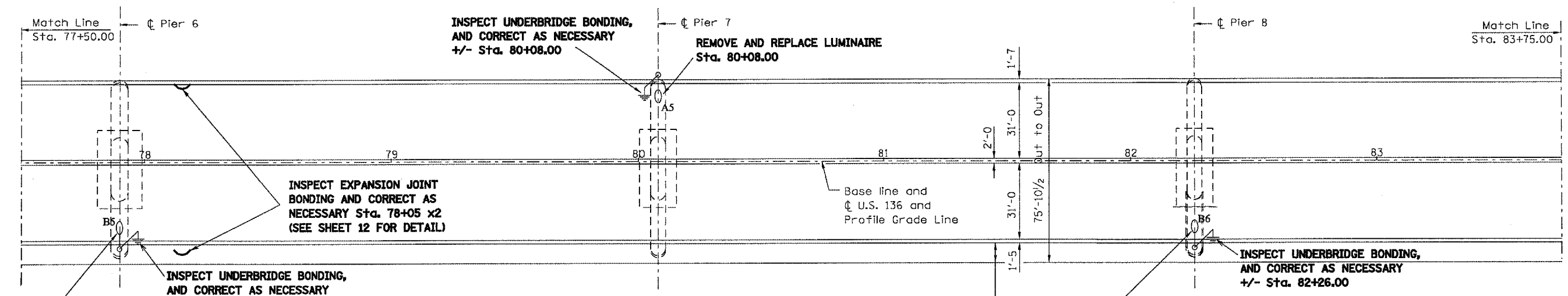
ILLINOIS DEPARTMENT OF TRANSPORTATION
PLAN AND PROFILE
 FAP 315 (US 136)
 SECTION (228)L
 HANCOCK COUNTY

DGN-SPEC
 DATE-TIME
 *REF:01

F.A.P. RTE.	SECTION	COUNTY	TOTAL SHEETS	SHEET NO.
315	G22BL	HANCOCK	13	8



LONGITUDINAL SECTION ALONG U.S. 136



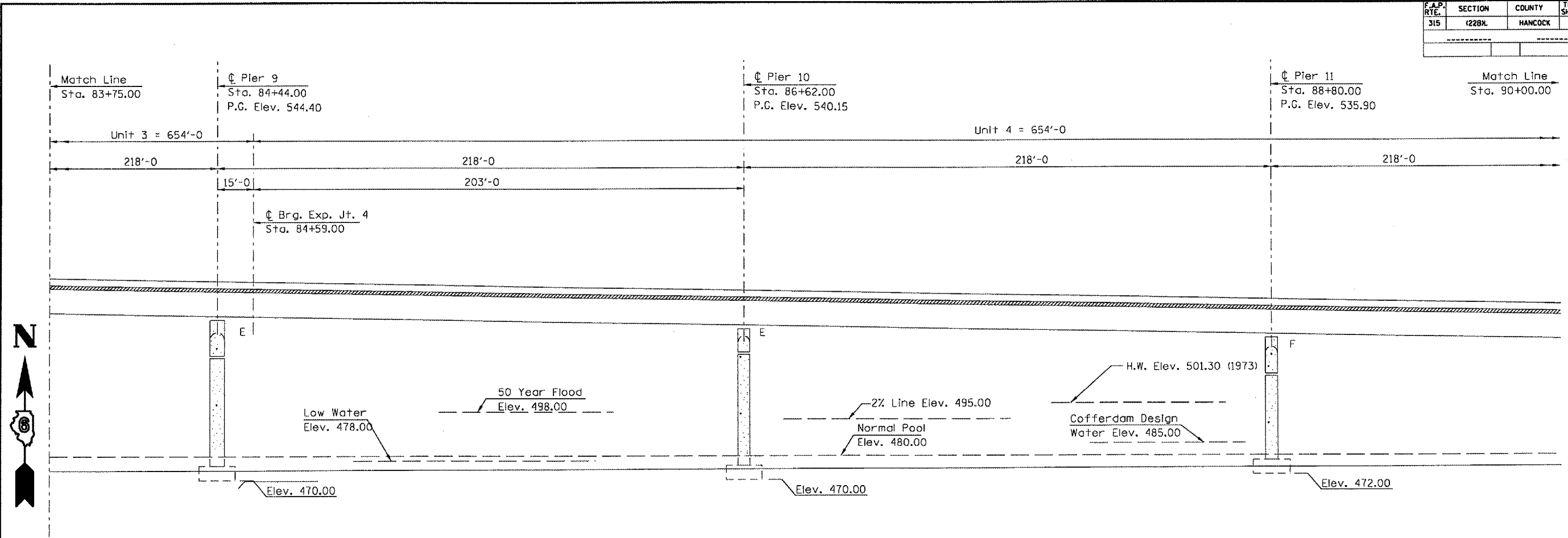
PLAN

REVISIONS	
NAME	DATE

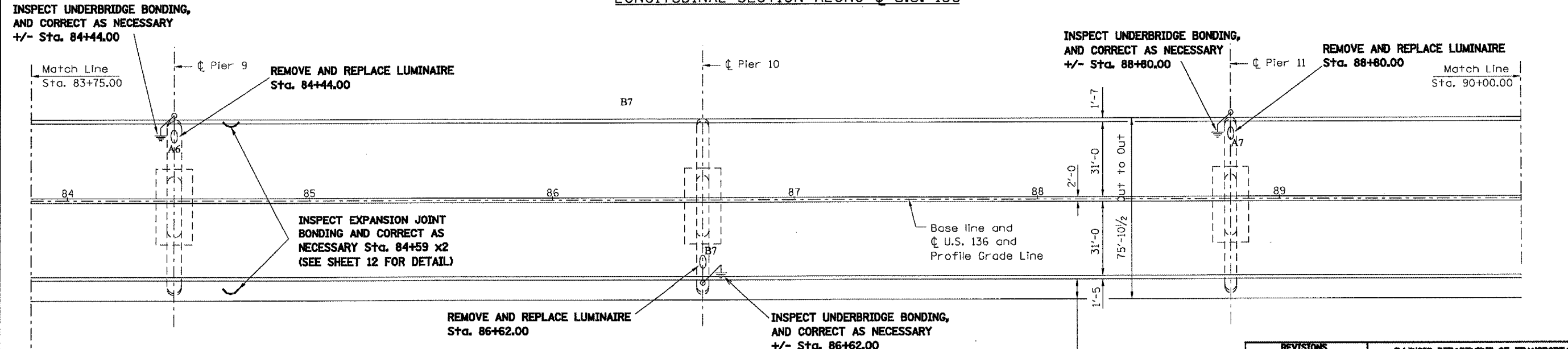
ILLINOIS DEPARTMENT OF TRANSPORTATION
 PLAN AND PROFILE
 FAP 315 (US 136)
 SECTION G22BL
 HANCOCK COUNTY

•DON-SPEC•
 •DATE-TIME•
 •REF#1

F.A.P. RTE.	SECTION	COUNTY	TOTAL SHEETS	SHEET NO.
315	(228L)	HANCOCK	13	9



LONGITUDINAL SECTION ALONG ☉ U.S. 136



PLAN

REVISIONS	
NAME	DATE

ILLINOIS DEPARTMENT OF TRANSPORTATION

PLAN AND PROFILE

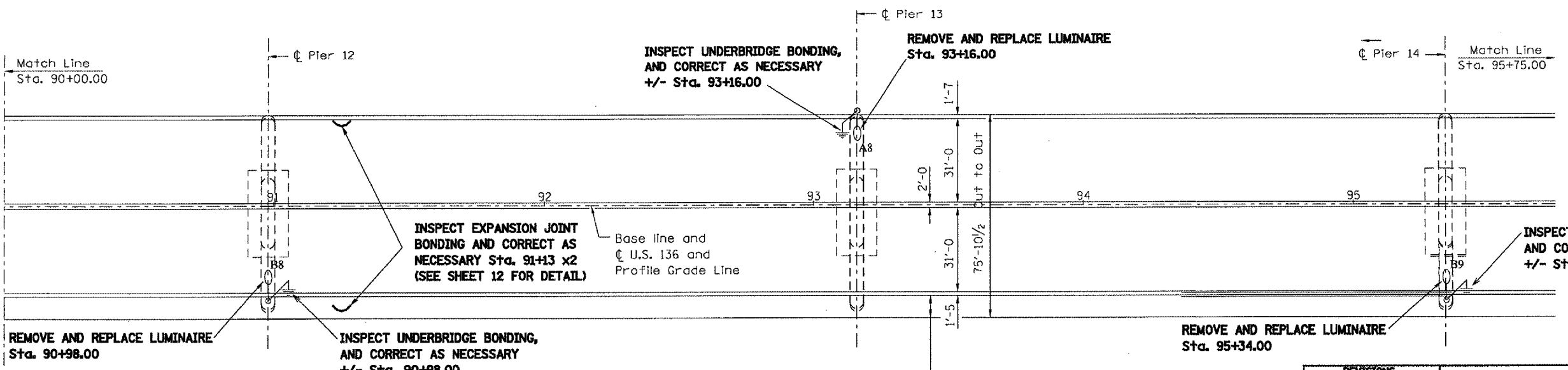
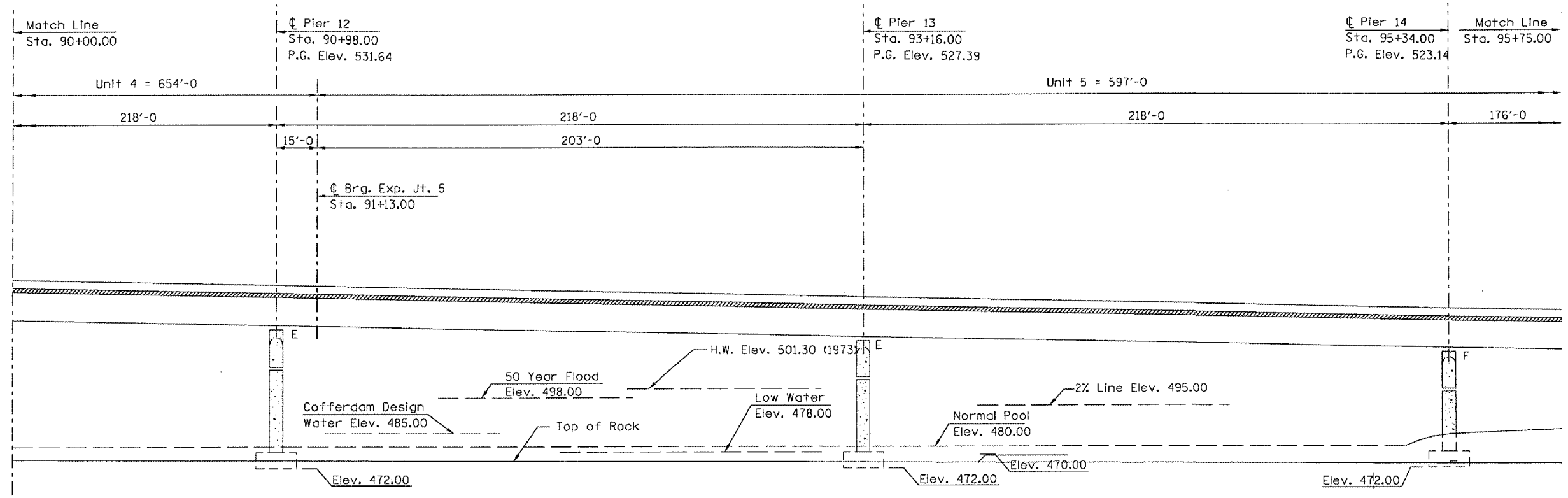
FAP 315 (US 136)

SECTION (228L)

HANCOCK COUNTY

CON-SPEC
 DATE-TIME
 REF'D

F.A.P. RTE.	SECTION	COUNTY	TOTAL SHEETS	SHEET NO.
315	(228L)	HANCOCK	13	10



REVISIONS	
NAME	DATE

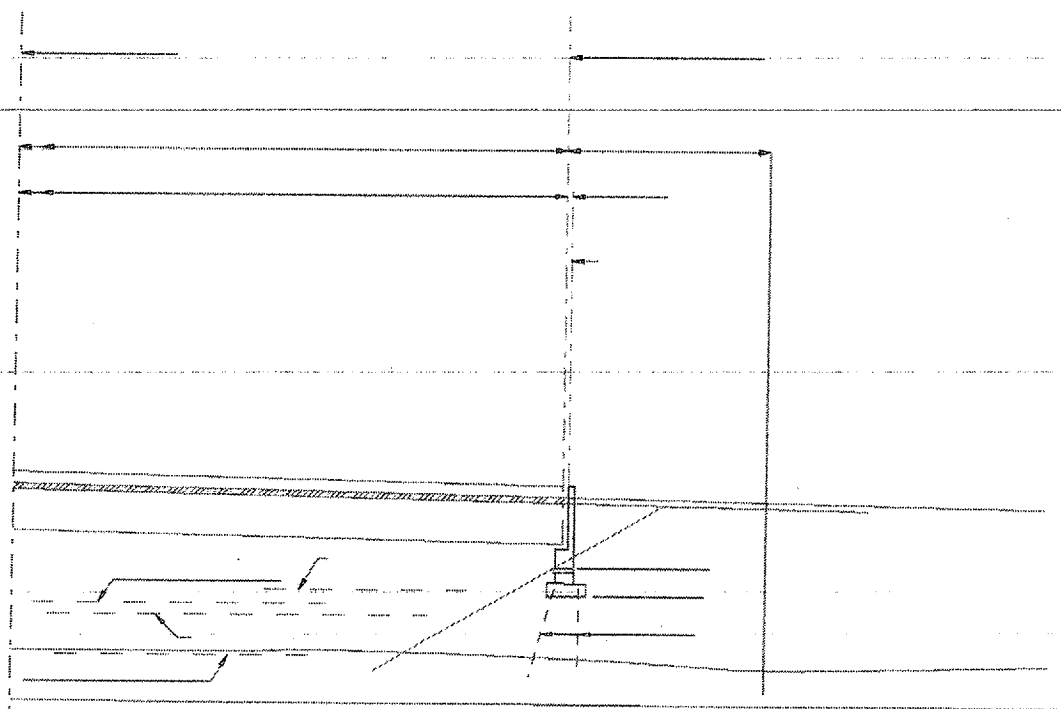
ILLINOIS DEPARTMENT OF TRANSPORTATION
 PLAN AND PROFILE
 FAP 315 (US 136)
 SECTION (228L)
 HANCOCK COUNTY



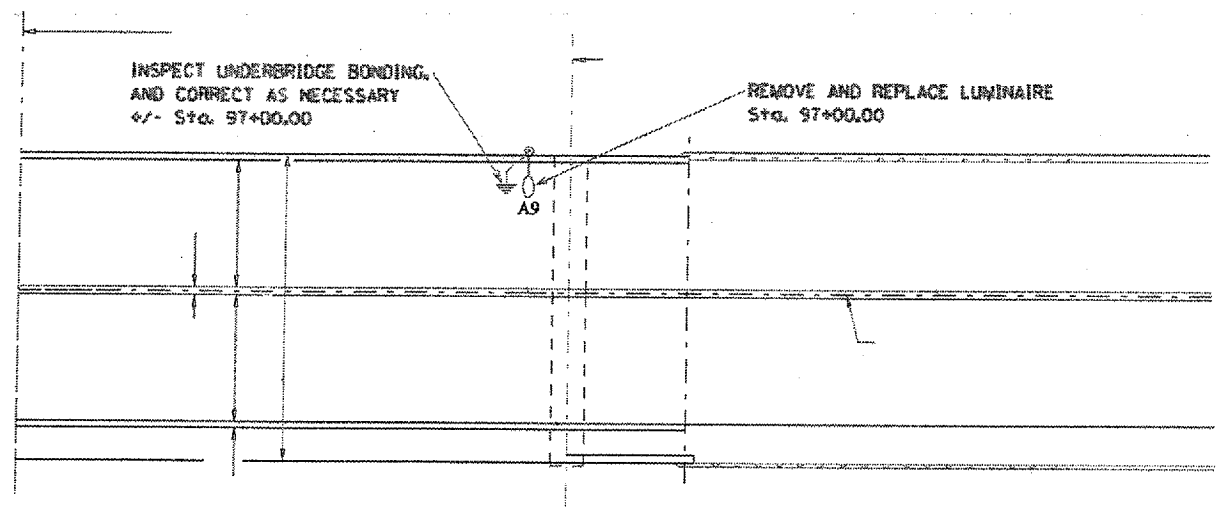
DCN-SPEC
 DATE-TIME
 REV#1

CONTRACT NO. 72469

F.P. RTE.	SECTION	COUNTY	TOTAL SHEETS	SHEET NO.
315	G2BIL	HANCOCK	15	11



LONGITUDINAL SECTION ALONG ϕ U.S. 136



INSPECT UNDERBRIDGE BONDING, AND CORRECT AS NECESSARY
+/- Sta. 57+00.00

REMOVE AND REPLACE LUMINAIRE
Sta. 57+00.00

A9

PLAN

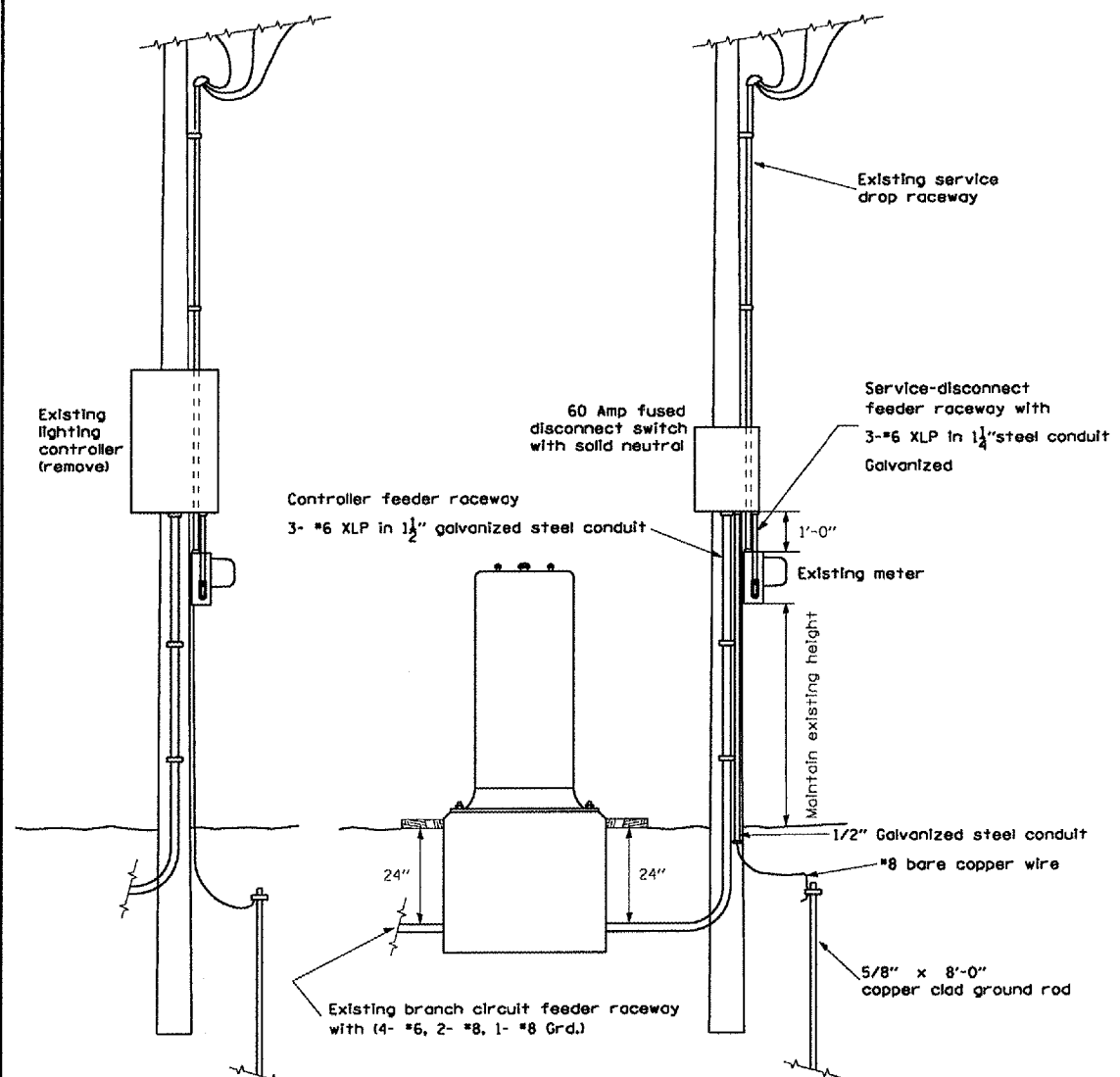
REVISIONS	
NAME	DATE

ILLINOIS DEPARTMENT OF TRANSPORTATION

PLAN AND PROFILE
F&P 315 (US 136)
SECTION G2BIL
HANCOCK COUNTY

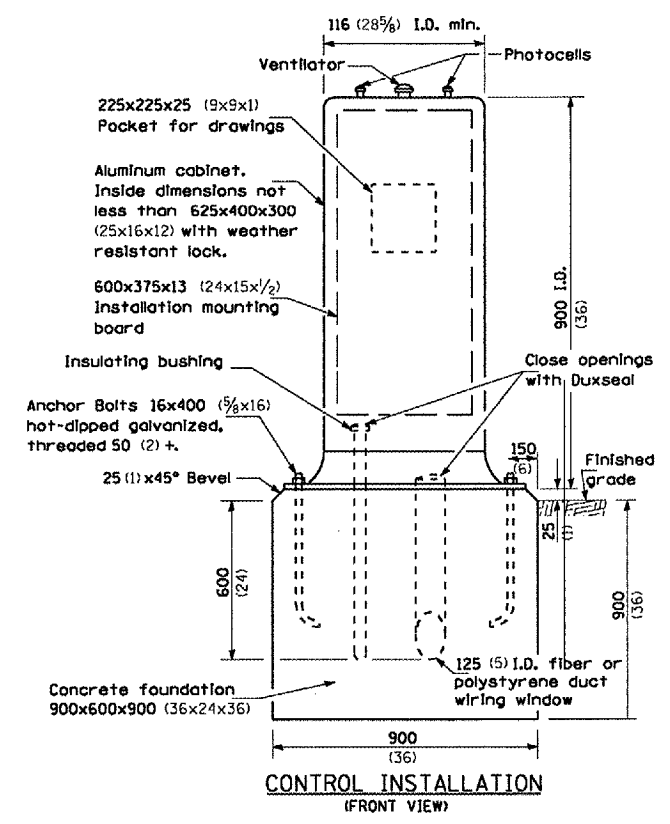
NON-SPEC.
DATE-TIME
REFR

CONTRACT NO. T2A69				
F.A.P. R.T.E.	SECTION	COUNTY	TOTAL SHEETS	SHEET NO.
315	Q284L	HANCOCK	13	12
STA.		TO STA.		
FED. ROAD DIST. NO. ILLINOIS FED. AID PROJECT				

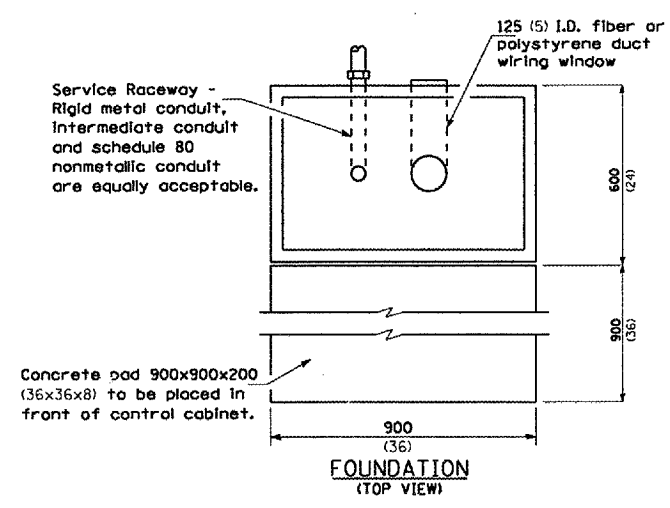


EXISTING 240 V. SERVICE POLE CONFIGURATION

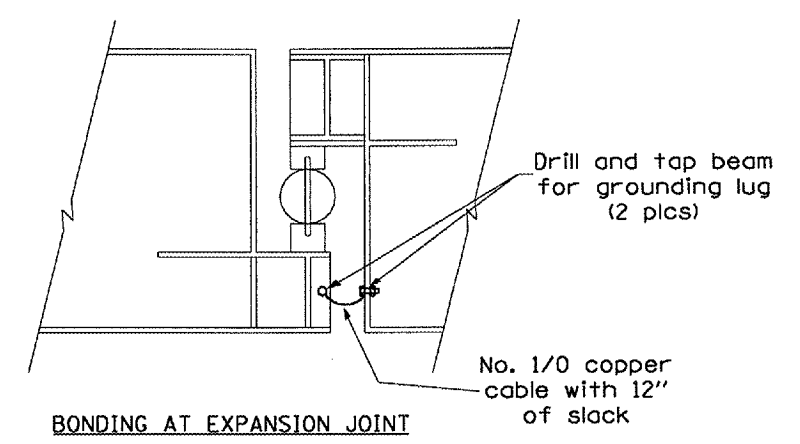
PROPOSED 240 V. SERVICE POLE CONFIGURATION



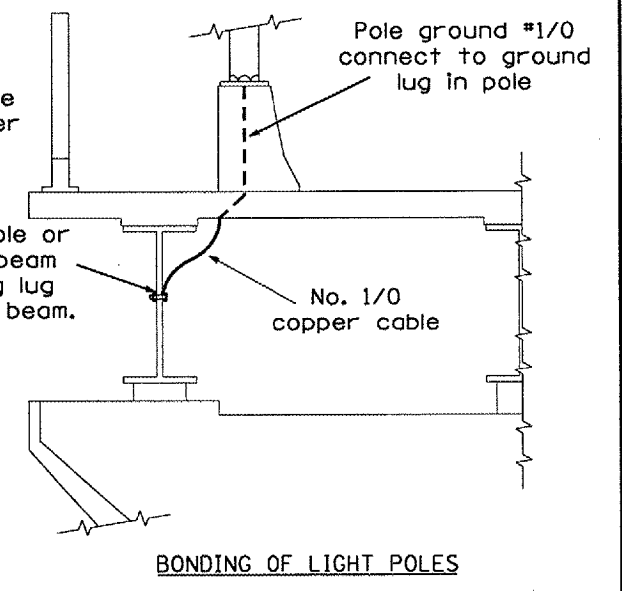
CONTROL INSTALLATION (FRONT VIEW)



FOUNDATION (TOP VIEW)



NOTE:
Sidewalk side of roadway shown, pole grounding for other side similar



Wiring shall be panel board fashion.
All bends shall be right angles.
All runs shall be vertical or parallel to panel board.
Wires shall be grouped or laced.
All control installation components shall be U.L. listed.
Label equipment ground and neutral.
Raceways shall terminate 75 (3) above top of concrete foundation.
All dimensions are in millimeters unless otherwise shown.

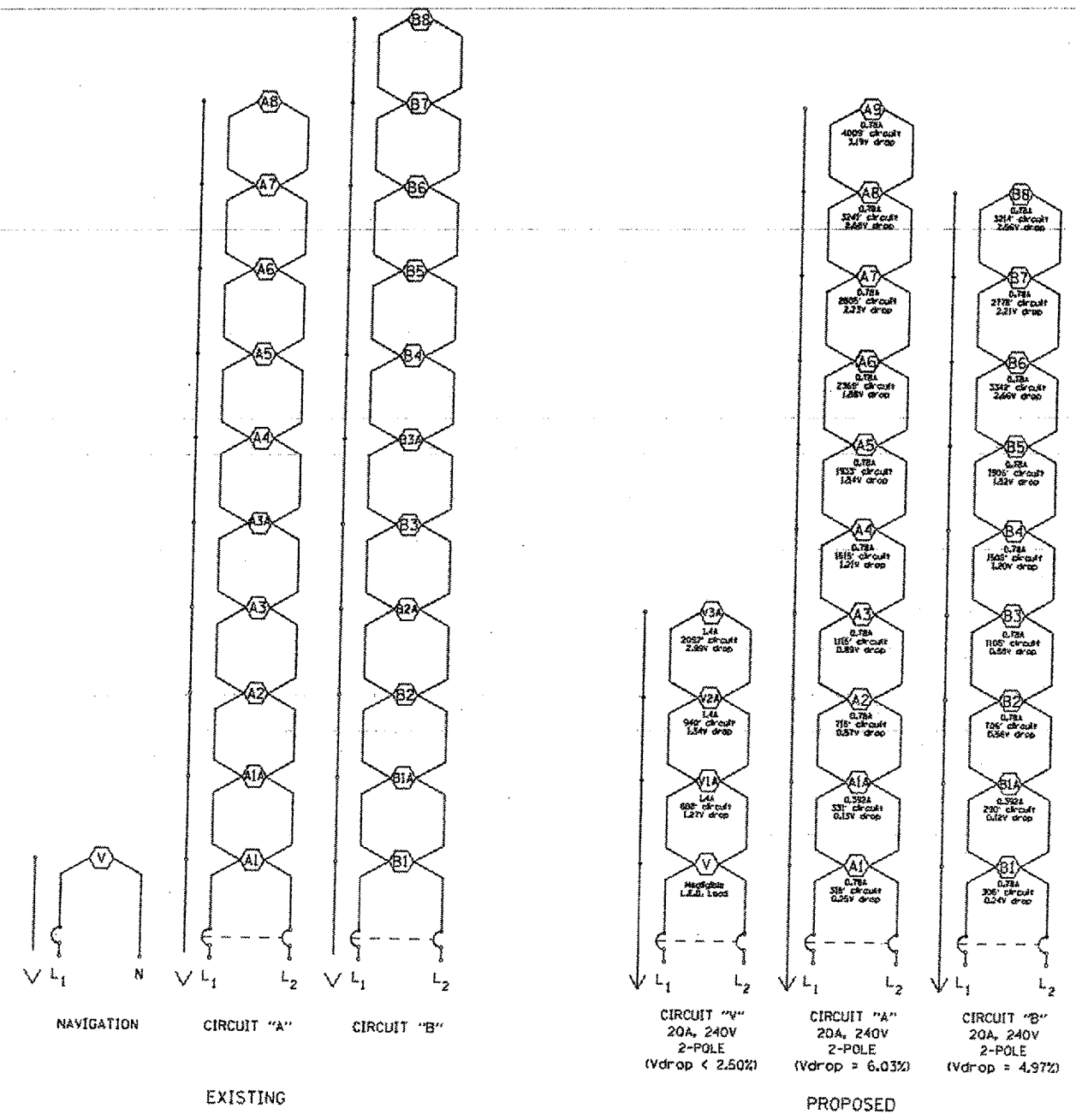
PLT DATE
FILE NAME
FILE SCALE
USER NAME

JLGT004

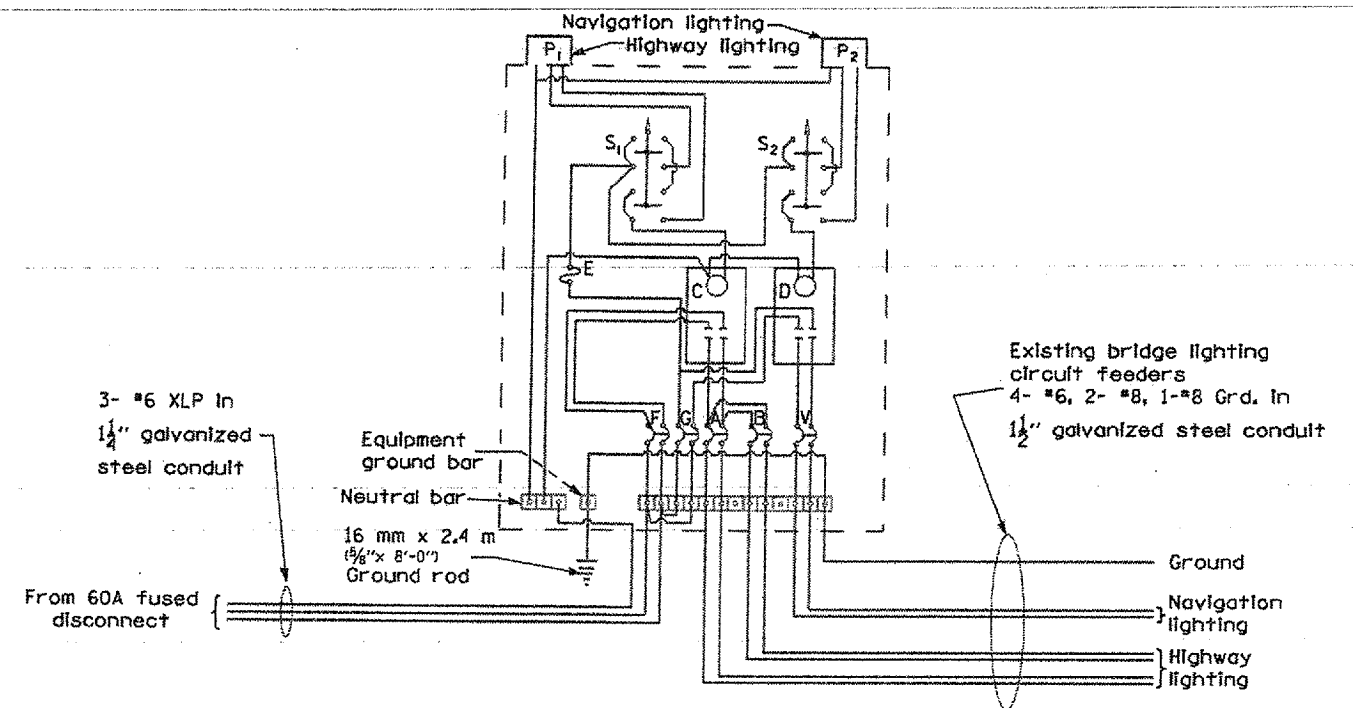
REVISIONS	
NAME	DATE

ILLINOIS DEPARTMENT OF TRANSPORTATION
CONTROL INSTALLATION DUAL
SCALE: VERT. HORIZ.
DATE
DRAWN BY
CHECKED BY

CONTRACT NO. 72669			
F.P.P. RY.	SECTION	COUNTY	TOTAL SHEETS NO.
315	(228)1	HANCOCK	13 13
STA.	TO STA.		
FED. ROAD DIST. NO.	ILLINOIS FED. AID PROJECT		



LOAD CONNECTION DIAGRAM



WIRING DIAGRAM FOR PROPOSED CONTROLLER

- P₁, P₂ Photocells w/integral surge arrestors
- S₁, S₂ Selector switch
- C Contactor 40A., 2 pole, 240V.
- D Contactor, 30A., 2 pole, 240V.
- E 10A. Control fuse
- F 40A., 2 pole, main breaker
- G 30A., 2 pole, main breaker
- A, B 20A., 2 pole, branch circuit breaker (2 pics)
- V 20A., 2 pole, branch circuit breaker

Wiring shall be panel board fashion.
 All bends shall be right angles.
 All runs shall be vertical or parallel to panel board.
 Wires shall be grouped or laced.
 All control installation components shall be U.L. listed.
 Label equipment ground and neutral.
 Raceways shall terminate 75 (3) above top of concrete foundation.
 All dimensions are in millimeters unless otherwise shown.

PLT DATE
 FILE NO.
 ORDER NO.

JLGT004

REVISIONS		ILLINOIS DEPARTMENT OF TRANSPORTATION
NAME	DATE	
		CONTROL INSTALLATION DUAL

SCALE: VERT. DATE
 HORIZ. DRAWN BY
 CHECKED BY