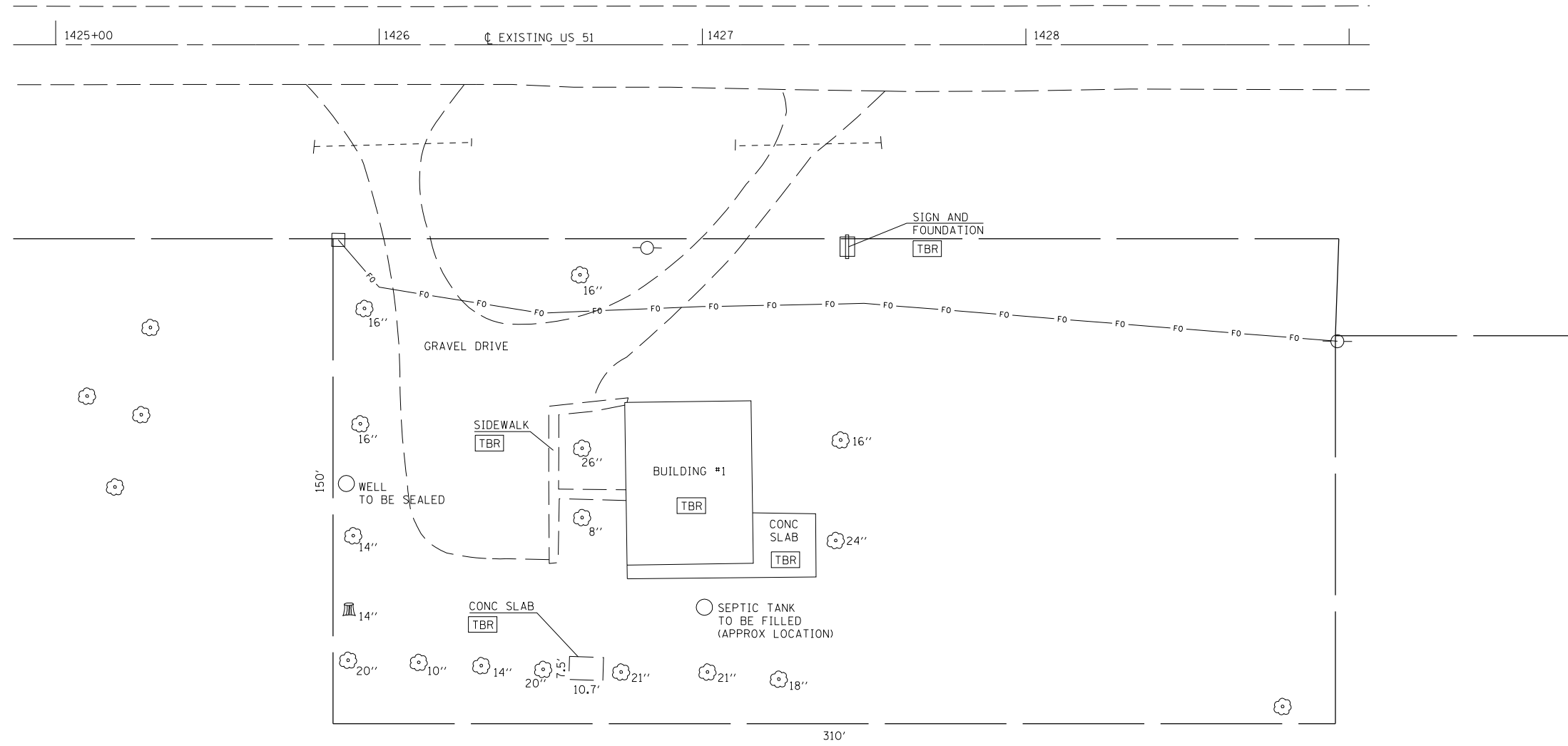


F.A.P. RTE.	SECTION	COUNTY	TOTAL SHEETS	SHEET NO.
322	*	CHRISTIAN	7	5

STA.	TO STA.
FED. ROAD DIST. NO.	ILLINOIS FED. AID PROJECT

• D6 BUILDING DEMOLITION 2008



PLOT DATE = 5/18/2007
 FILE NAME = c:\projects\653307\shplan.dgn
 PLOT SCALE = 42,352% / IN.
 USER NAME = laughlin-1

REVISIONS	
NAME	DATE

ILLINOIS DEPARTMENT OF TRANSPORTATION
 PLAN SHEET
 FAP 322 (US 51)
 SECTION D6 BUILDING DEMOLITION 2008
 CHRISTIAN COUNTY

SCALE: VERT. _____
 HORIZ. _____
 DATE _____

DRAWN BY _____
 CHECKED BY _____