

F.A.P. RTE.	SECTION	COUNTY	TOTAL SHEETS	SHEET NO.
322		CHRISTIAN	7	1

D6 BUILDING DEMOLITION 2008

STATE OF ILLINOIS
DEPARTMENT OF TRANSPORTATION
DIVISION OF HIGHWAYS

PROPOSED HIGHWAY PLANS

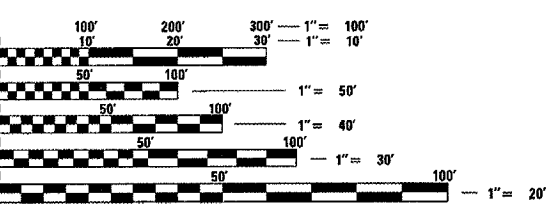
FAP ROUTE 322 (US 51)
SECTION D6 BUILDING DEMOLITION 2008
PROJECT
CHRISTIAN COUNTY
C-96-553-07

INDEX OF SHEETS

1. COVER SHEET
2. GENERAL NOTES
3. SUMMARY OF QUANTITIES
4. FLOOR PLAN / MATERIAL TABLE
5. PLAN SHEET
6. SEEDING PLAN SHEET
7. FUTURE FOUR LANE PLAN SHEET

HIGHWAY STANDARDS

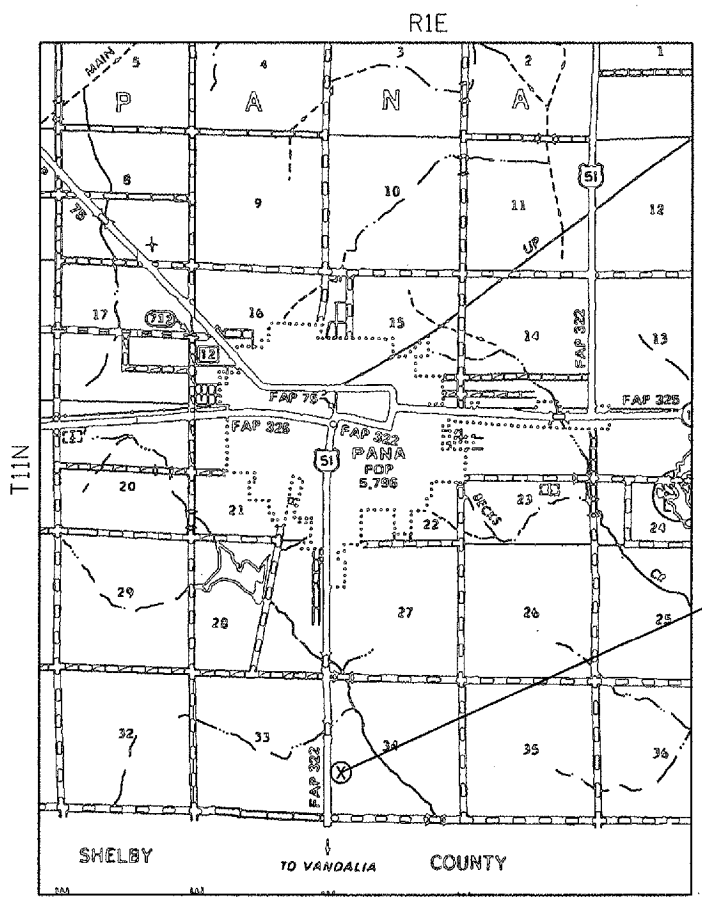
- 701001-01
- 701006-02
- 702001-06
- 000001-04



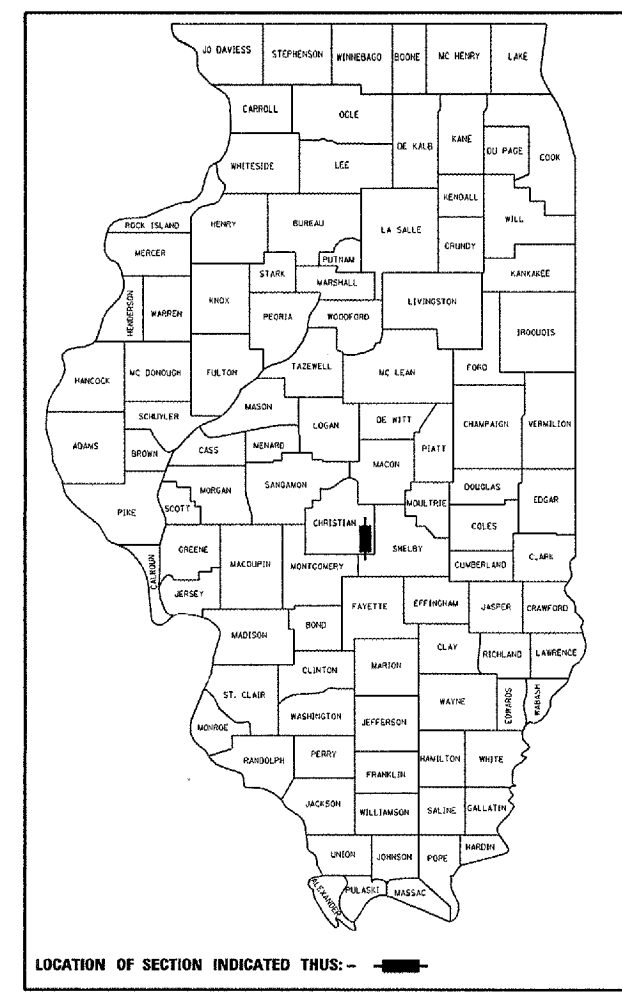
FULL SIZE PLANS HAVE BEEN PREPARED USING STANDARD ENGINEERING SCALES. REDUCED SIZED PLANS WILL NOT CONFORM TO STANDARD SCALES. IN MAKING MEASUREMENTS ON REDUCED PLANS, THE ABOVE SCALES MAY BE USED.

J.U.L.I.E.
JOINT UTILITY LOCATION INFORMATION FOR EXCAVATION
1-800-892-0123

CONTRACT NO. 72B06



D-96-533-07



STATE OF ILLINOIS
DEPARTMENT OF TRANSPORTATION
DIVISION OF HIGHWAYS

SUBMITTED May 17, 2007

Christ U'Red
DEPUTY DIRECTOR OF HIGHWAYS, REGION ENGINEER

June 29, 2007
Eric E. Hamm
INTERIM ENGINEER OF DESIGN AND ENVIRONMENT

June 29, 2007
Milton R. Sees, P.E.
DIRECTOR OF HIGHWAYS, CHIEF ENGINEER

**PRINTED BY THE AUTHORITY
OF THE STATE OF ILLINOIS**

PROJECT ENGINEER: SAL MADONIA (217) 782-4761
SQUAD LEADER: JEFFREY P. MYERS (217) 524-7940