

F.A.P. RTE.	SECTION	COUNTY	TOTAL SHEETS	SHEET NO.
322		CHRISTIAN	7	1

D6 BUILDING DEMOLITION 2008

STATE OF ILLINOIS  
DEPARTMENT OF TRANSPORTATION  
DIVISION OF HIGHWAYS

# PROPOSED HIGHWAY PLANS

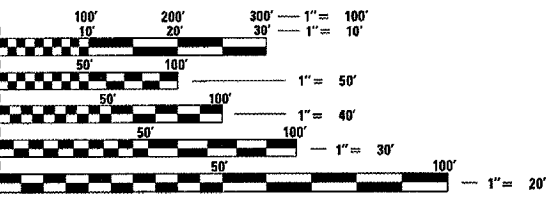
FAP ROUTE 322 (US 51)  
SECTION D6 BUILDING DEMOLITION 2008  
PROJECT  
CHRISTIAN COUNTY  
C-96-553-07

### INDEX OF SHEETS

1. COVER SHEET
2. GENERAL NOTES
3. SUMMARY OF QUANTITIES
4. FLOOR PLAN / MATERIAL TABLE
5. PLAN SHEET
6. SEEDING PLAN SHEET
7. FUTURE FOUR LANE PLAN SHEET

### HIGHWAY STANDARDS

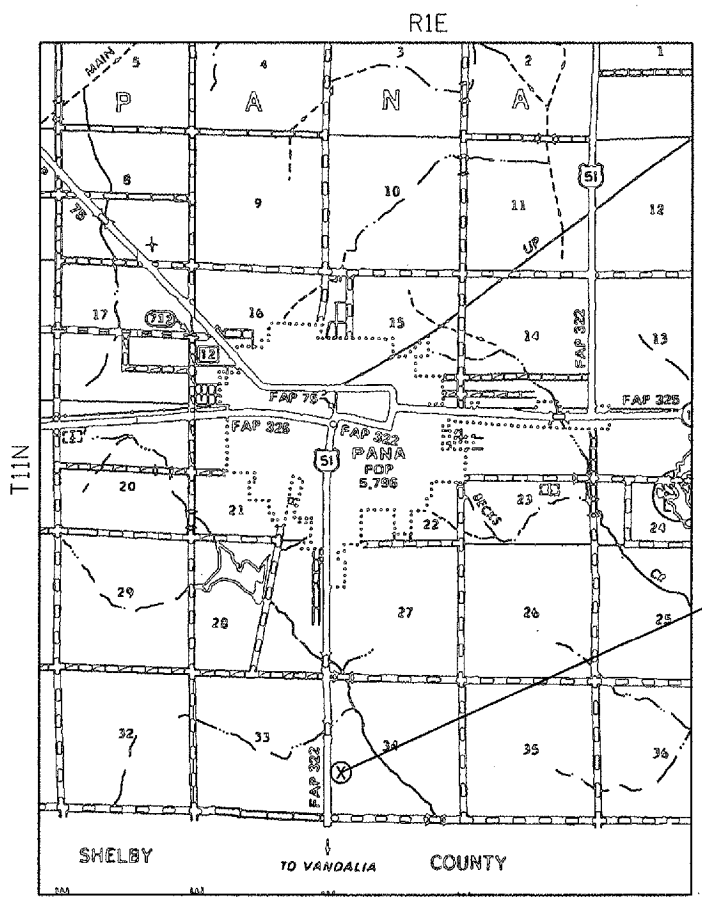
- 701001-01
- 701006-02
- 702001-06
- 000001-04



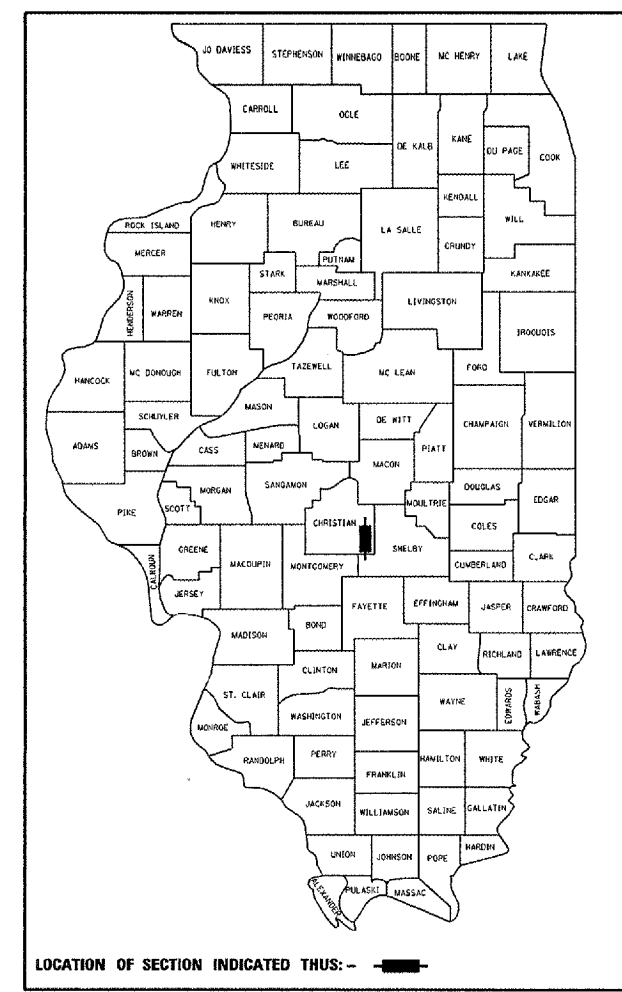
FULL SIZE PLANS HAVE BEEN PREPARED USING STANDARD ENGINEERING SCALES. REDUCED SIZED PLANS WILL NOT CONFORM TO STANDARD SCALES. IN MAKING MEASUREMENTS ON REDUCED PLANS, THE ABOVE SCALES MAY BE USED.

J.U.L.I.E.  
JOINT UTILITY LOCATION INFORMATION FOR EXCAVATION  
1-800-892-0123

CONTRACT NO. 72B06



D-96-533-07



PROJECT ENGINEER: SAL MADONIA (217) 782-4761  
SQUAD LEADER: JEFFREY P. MYERS (217) 524-7940

STATE OF ILLINOIS  
DEPARTMENT OF TRANSPORTATION  
DIVISION OF HIGHWAYS

SUBMITTED May 17, 2007  
Christ U'Red  
DEPUTY DIRECTOR OF HIGHWAYS, REGION ENGINEER

June 29, 2007  
Eric E. Hamm  
Interim ENGINEER OF DESIGN AND ENVIRONMENT

June 29, 2007  
Milton R. Sees, P.E.  
DIRECTOR OF HIGHWAYS, CHIEF ENGINEER

**PRINTED BY THE AUTHORITY  
OF THE STATE OF ILLINOIS**

CONTRACT NO. 72806			
F.A.P. RTE.	SECTION	COUNTY	TOTAL SHEET NO.
322	*	CHRISTIAN	7 2
STA.		TO STA.	
FED. ROAD DIST. NO.	ILLINOIS	FED. AID PROJECT	
• D6 BUILDING DEMOLITION 2008			

GENERAL NOTES

- SEEDING WILL NOT BE PERMITTED AT ANY TIME WHEN THE GROUND IS FROZEN, WET OR IN AN UNTILLABLE CONDITION. LOCATIONS TO BE SEEDED SHALL BE DETERMINED BY THE ENGINEER.
- THE CONTRACTOR SHALL BE RESPONSIBLE FOR PROTECTING UTILITY PROPERTY FROM CONSTRUCTION OPERATIONS AS OUTLINED IN ARTICLE 107.31 OF THE STANDARD SPECIFICATIONS. THE JULIE NUMBER IS 800-892-0123. A MINIMUM OF FORTY-EIGHT HOURS ADVANCE NOTICE IS REQUIRED. ANY DAMAGE TO THE UNDERGROUND FACILITIES, CAUSED BY THE CONTRACTOR, SHALL BE REPAIRED TO THE SATISFACTION OF THE DEPARTMENT AT THE CONTRACTOR'S EXPENSE, INCLUDING TEMPORARY REPAIRS WHICH MAY BE REQUIRED TO KEEP THE FACILITY OPERATIONAL WHILE MATERIALS IS BEING OBTAINED TO MAKE PERMANENT REPAIRS.
- ANY REFERENCE TO A STANDARD IN THESE PLANS SHALL BE INTERPRETED TO MEAN THE EDITION AS INDICATED BY THE SUBNUMBER LISTED ON THE INDEX OF SHEETS OR THE COPY OF THE STANDARD INCLUDED IN THESE PLANS.

COMMITMENTS

THERE ARE NO COMMITMENTS ON THIS PROJECT.

DISTRICT SIX		
EXAMINED	<u>May 5</u>	20 <u>07</u>
<i>[Signature]</i>		
OPERATIONS ENGINEER		
EXAMINED	<u>May 17</u>	20 <u>07</u>
<i>[Signature]</i>		
PROGRAM IMPLEMENTATION ENGINEER		
EXAMINED	<u>May 17</u>	20 <u>07</u>
<i>[Signature]</i>		
PROGRAM DEVELOPMENT ENGINEER		

REVISIONS	
NAME	DATE

ILLINOIS DEPARTMENT OF TRANSPORTATION  
 GENERAL NOTES  
 FAP 322 (US 51)  
 D-6 BUILDING DEMOLITION 2008  
 CHRISTIAN COUNTY  
 SCALE: VERT. \_\_\_\_\_  
 DATE: \_\_\_\_\_ HORIZ. \_\_\_\_\_  
 DRAWN BY \_\_\_\_\_  
 CHECKED BY \_\_\_\_\_

PLOT DATE = 5/17/2007  
 FILE NAME = c:\projects\d65307\atgennote.dgn  
 USER NAME = agrup

F.A.P. RTE.	SECTION	COUNTY	TOTAL SHEETS	SHEET NO.
322	.	CHRISTIAN	7	3
STA.		TO STA.		
FED. ROAD DIST. NO.	ILLINOIS	FED. AID PROJECT		
D-6 BUILDING DEMOLITION 2008				

# ILLINOIS DEPARTMENT OF TRANSPORTATION SUMMARY OF QUANTITIES

LOCATION OF WORK

100% STATE

SUMMARY OF QUANTITIES				CONSTRUCTION TYPE CODE
CODE NO.	ITEM	UNIT	TOTAL QUANTITY	<i>Y004</i>
25000200	SEEDING, CLASS 2	ACRE	0.5	0.5
25000400	NITROGEN FERTILIZER NUTRIENT	POUND	45	45
25000500	PHOSPHORUS FERTILIZER NUTRIENT	POUND	45	45
25000600	POTASSIUM FERTILIZER NUTRIENT	POUND	45	45
25100115	MULCH, METHOD 2	ACRE	0.5	0.5
67100100	MOBILIZATION	L SUM	1	1
67201000	SEALING ABANDONED WATER WELLS	EACH	1	1
70103700	TRAFFIC CONTROL COMPLETE	L SUM	1	1
Z0007601	BUILDING REMOVAL NO. 1	L SUM	1	1
Z0023800	FILLING EXISTING SEPTIC TANK	EACH	1	1
* Z0049901	REMOVAL AND DISPOSAL OF NON-FRIABLE ASBESTOS, BUILDING NO. 1	L SUM	1	1

*\* SPECIALTY ITEMS*

PLOT DATE = 5/17/2007  
 FILE NAME = s:\projects\6853397\shs\shs.dgn  
 PLOT SCALE = 1/8"=1'-0"  
 USER NAME = feughlin1

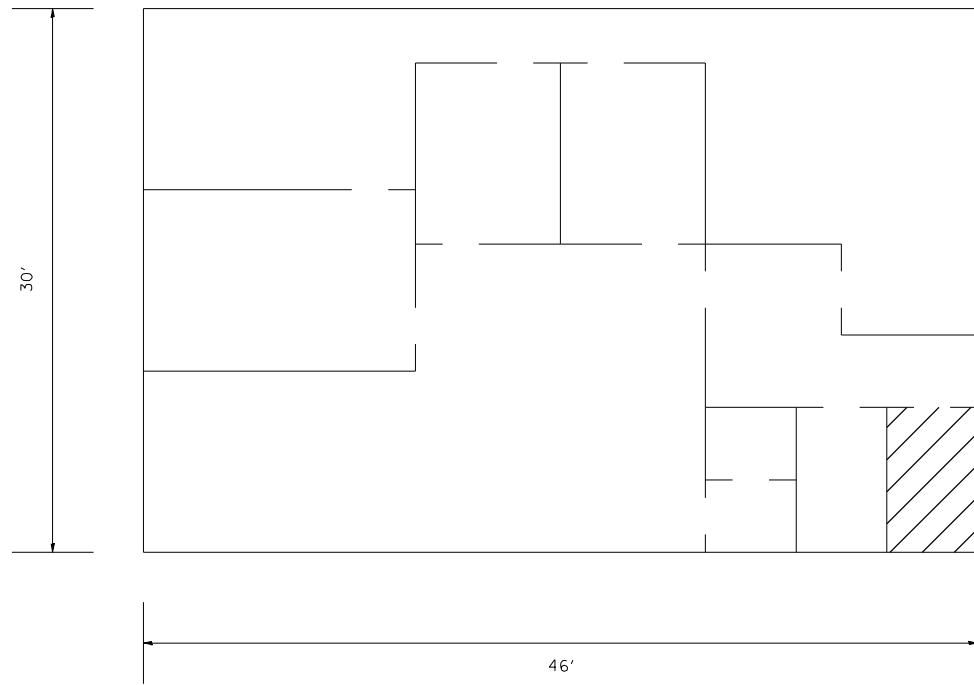
REVISIONS	
NAME	DATE

ILLINOIS DEPARTMENT OF TRANSPORTATION  
SUMMARY OF QUANTITIES  
FAP 322 (US-51)  
SECTION D6 BUILDING DEMOLITION 2008  
CHRISTIAN COUNTY

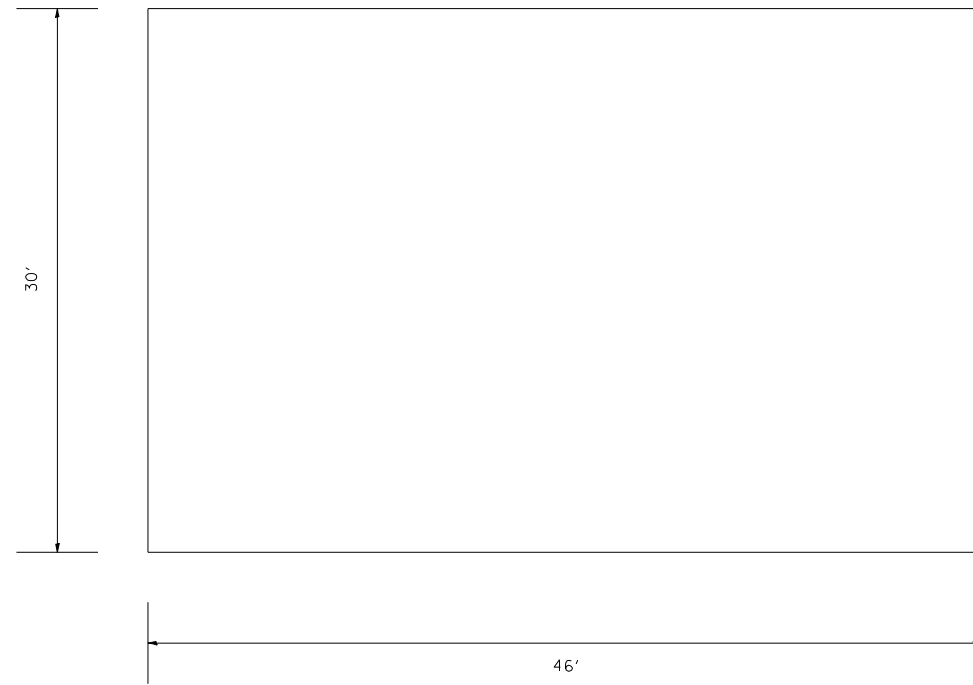
SCALE: VERT. \_\_\_\_\_  
 HORIZ. \_\_\_\_\_  
 DATE \_\_\_\_\_ DRAWN BY \_\_\_\_\_  
 CHECKED BY \_\_\_\_\_

F.A.P. RTE.	SECTION	COUNTY	TOTAL SHEETS	SHEET NO.
322	*	CHRISTIAN	7	4
STA.		TO STA.		
FED. ROAD DIST. NO.	ILLINOIS	FED. AID PROJECT		

\* D6 BUILDING DEMOLITION 2008



FLOOR PLAN



ROOF PLAN



CEILING PANELS

ASBESTOS - CONTAINING MATERIAL TO BE REMOVED

MATERIAL DESCRIPTION	LOCATION	FRIABLE	ASBESTOS TYPE	ASBESTOS %	QUANTITY
TRANSITE CEILING PANELS	UTILITY ROOM	NO	AMOSITE CHRYSOTILE	15% 45%	50 SQ FT

NOTE: DIMENSIONS ARE APPROXIMATE

REVISIONS	
NAME	DATE

ILLINOIS DEPARTMENT OF TRANSPORTATION

FLOOR PLAN / MATERIAL TABLE  
 FAP 322 (US 51)  
 SECTION D6 BUILDING DEMOLITION 2008  
 CHRISTIAN COUNTY

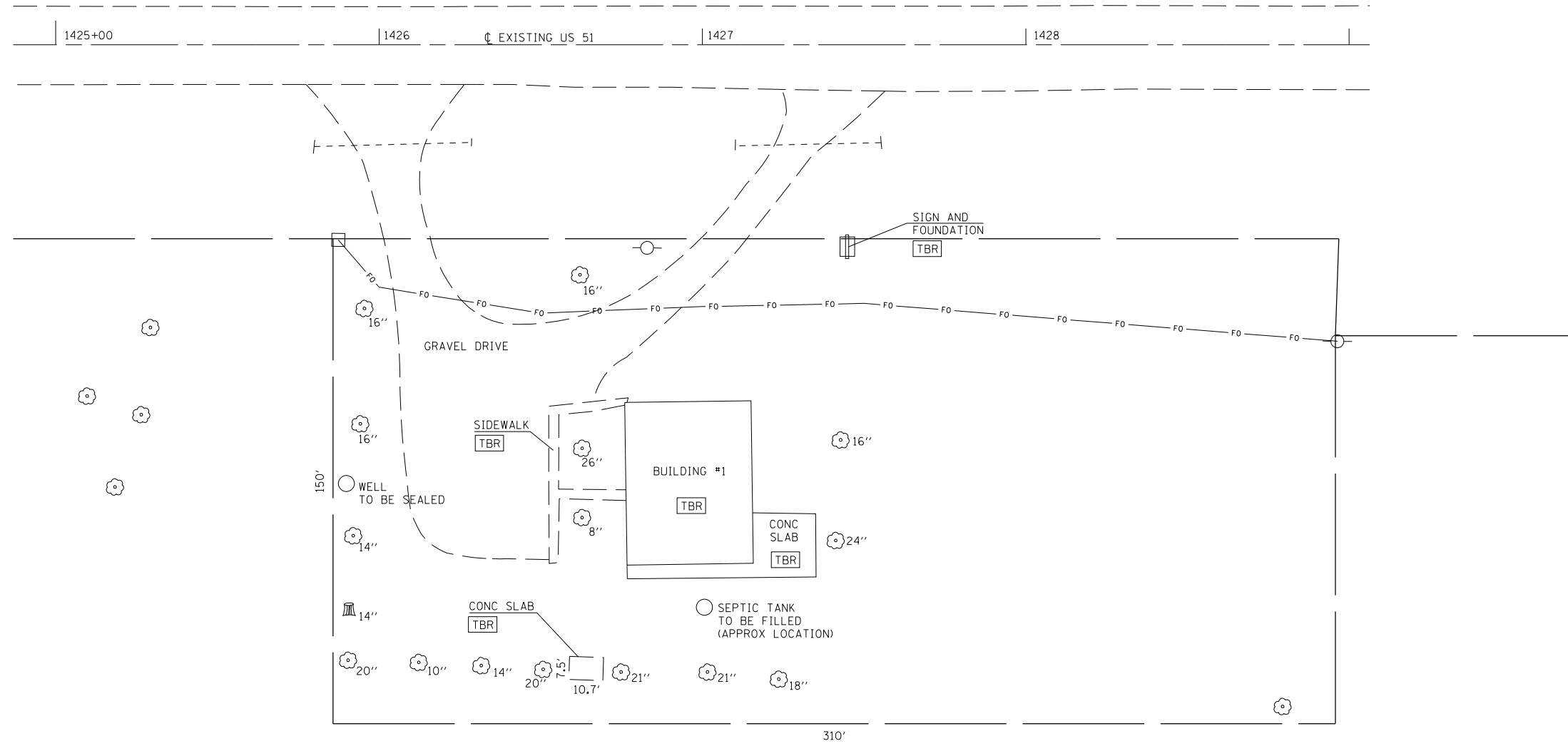
SCALE: VERT.  
 HORIZ.  
 DATE

DRAWN BY  
 CHECKED BY

F.A.P. RTE.	SECTION	COUNTY	TOTAL SHEETS	SHEET NO.
322	*	CHRISTIAN	7	5

STA.	TO STA.
FED. ROAD DIST. NO.	ILLINOIS FED. AID PROJECT

• D6 BUILDING DEMOLITION 2008



PLOT DATE = 5/18/2007  
 FILE NAME = c:\projects\653307\shplan.dgn  
 PLOT SCALE = 42,352% / IN.  
 USER NAME = laughlin-1

REVISIONS	
NAME	DATE

ILLINOIS DEPARTMENT OF TRANSPORTATION  
 PLAN SHEET  
 FAP 322 (US 51)  
 SECTION D6 BUILDING DEMOLITION 2008  
 CHRISTIAN COUNTY

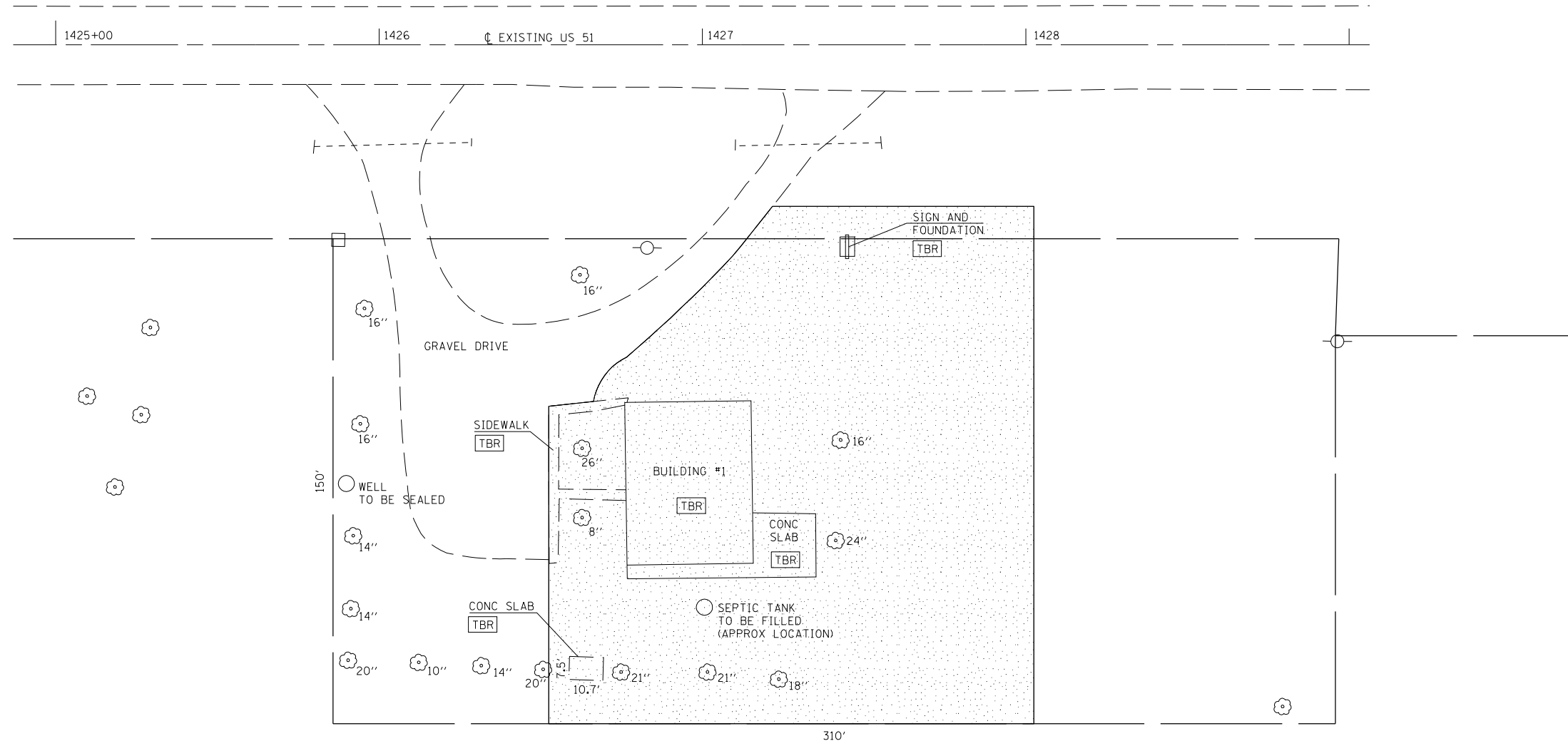
SCALE: VERT. \_\_\_\_\_  
 HORIZ. \_\_\_\_\_  
 DATE \_\_\_\_\_

DRAWN BY \_\_\_\_\_  
 CHECKED BY \_\_\_\_\_

F.A.P. RTE.	SECTION	COUNTY	TOTAL SHEETS	SHEET NO.
322	*	CHRISTIAN	7	6

STA.	TO STA.
FED. ROAD DIST. NO.	ILLINOIS FED. AID PROJECT

• D6 BUILDING DEMOLITION 2008



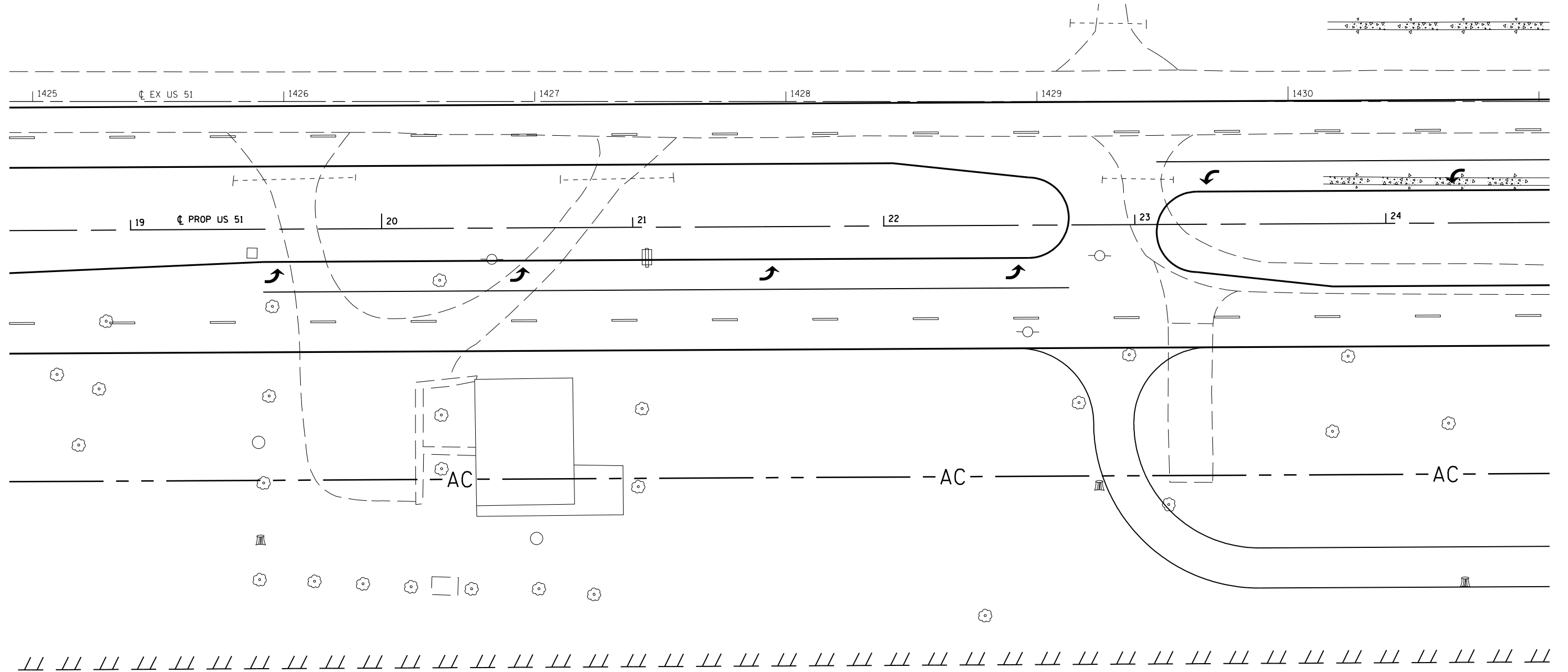
 SEEDING, CLASS 2

REVISIONS	
NAME	DATE

ILLINOIS DEPARTMENT OF TRANSPORTATION  
 SEEDING PLAN SHEET  
 FAP 322 (US 51)  
 SECTION D6 BUILDING DEMOLITION 2008  
 CHRISTIAN COUNTY  
 SCALE: VERT. \_\_\_\_\_  
 HORIZ. \_\_\_\_\_  
 DATE \_\_\_\_\_ DRAWN BY \_\_\_\_\_  
 CHECKED BY \_\_\_\_\_

PLOT DATE = 5/17/2007  
 FILE NAME = c:\p\projects\4653387\shplan.dgn  
 PLOT SCALE = 42,3525' / IN.  
 USER NAME = laughlin-1

F.A.P. RTE.	SECTION	COUNTY	TOTAL SHEETS	SHEET NO.
322	.	CHRISTIAN	7	7
STA.		TO STA.		
FED. ROAD DIST. NO.	ILLINOIS	FED. AID PROJECT		
• D6 BUILDING DEMOLITION 2008				



FOR INFORMATION ONLY

REVISIONS	
NAME	DATE

ILLINOIS DEPARTMENT OF TRANSPORTATION  
 FUTURE FOUR LANE PLAN SHEET  
 FAP 322 (US 51)  
 D-6 BUILDING DEMOLITION 2008  
 CHRISTIAN COUNTY  
 SCALE: VERT. \_\_\_\_\_  
 HORIZ. \_\_\_\_\_  
 DATE \_\_\_\_\_ DRAWN BY \_\_\_\_\_  
 CHECKED BY \_\_\_\_\_

PLOT DATE = 5/17/2007  
 FILE NAME = c:\p\projects\653387\shplan\41enne.dgn  
 PLOT SCALE = 42,352% / IN.  
 USER NAME = laughlin-1