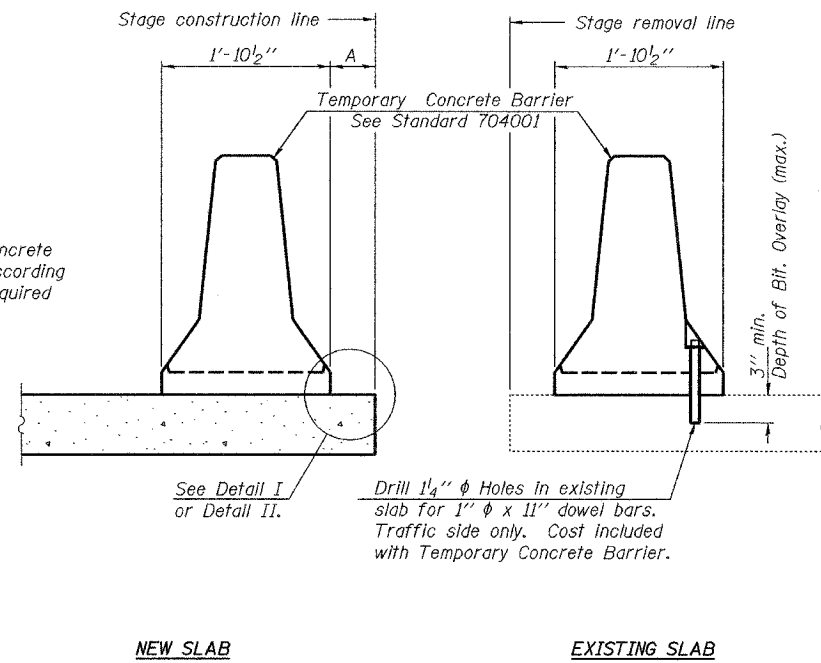


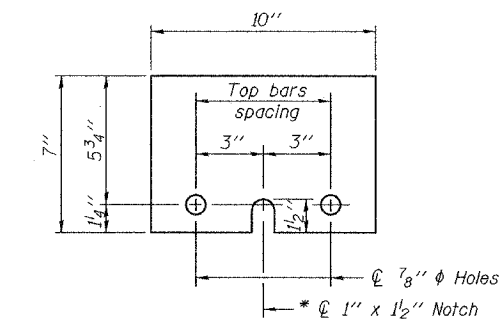
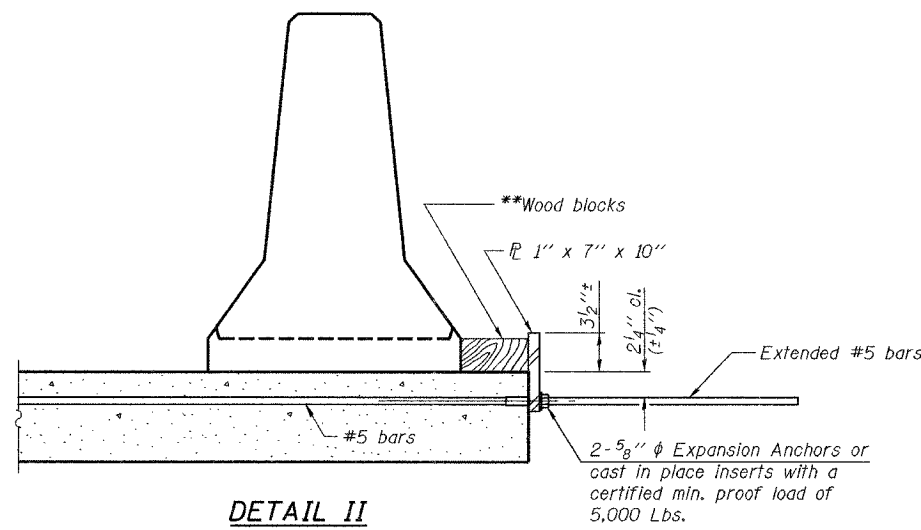
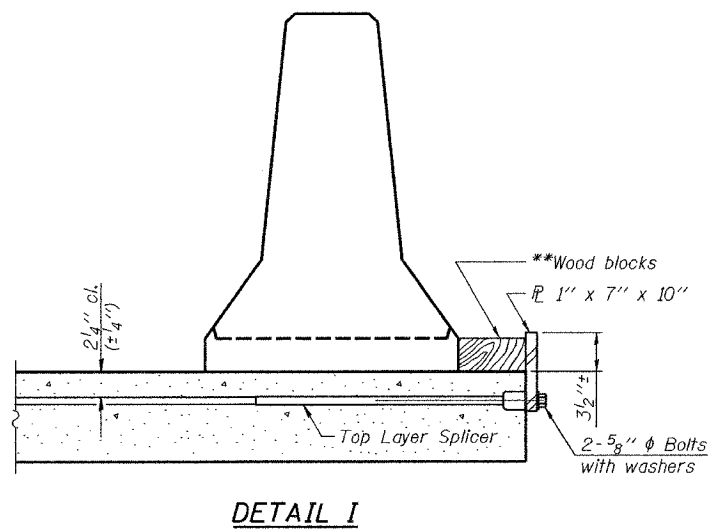
ROUTE NO.	SECTION	COUNTY	TOTAL SHEETS	SHEET NO.	SHEET NO. 3 11 SHEETS
FAP 332	101B-1	WABASH	34	20	
FED. ROAD DIST. NO. 7		ILLINOIS	FED. AID PROJECT		

Contract # 74003



When "A" is 3'-6" or less, the temporary concrete barrier shall be anchored to the new slab according to Detail I or Detail II. No anchorage is required when "A" is greater than 3'-6".

**SECTIONS THRU SLAB**



**STEEL RETAINER PL 1" x 7" x 10"**

\* Required only with Detail II

**NOTES**

Detail I - With Bar Splicer or Couplers:  
Connect one (1) 1"x7"x10" steel PL to the top layer of couplers with 2-5/8" φ bolts screwed to coupler at approximate C of each barrier panel.

Detail II - With Extended Reinforcement Bars:  
Connect one (1) 1"x7"x10" steel PL to the concrete slab with 2-5/8" φ Expansion Anchors or cast in place inserts spaced between the top layer of reinforcement at approximate C of each barrier panel.

Cost of anchorage is included with Temporary Concrete Barrier. The 1" x 7" x 10" plate shall not be removed until stage II construction forms and all reinforcement bars are in place and the concrete is ready to be placed.

\*\* Wood blocks may be omitted when required to provide minimum stage traffic lane width. When the wood blocks are omitted, the concrete barrier shall be in direct contact with the steel retainer plate.

PLOT DATE = 03/15/2007  
FILE NAME = R-27-TEMP-CONC-BARRIER.dgn  
PLOT SCALE = 0.10000 1' / IN.  
USER NAME = TFG

R-27 11-1-06

ILLINOIS DEPARTMENT OF TRANSPORTATION	
SHEET TITLE TEMPORARY CONCRETE BARRIER FOR STAGE CONSTRUCTION	
PROJECT FAP 332 OVER BONPAS CREEK FAP ROUTE 332 (IL 1) SECTION 101B-1 WABASH COUNTY STATION 149+30 SN 093-0005	PROJECT NO. 06026 SCALE DATE 03/15/07 DRAWN BY TFG CHECKED BY GBJ/CME/MCB DRAWING NO.
COOMBE-BLOXDORF P.C. Engineers / Land Surveyors Springfield, Illinois Design Firm License No. 184-002703	3 OF 11 SHTS