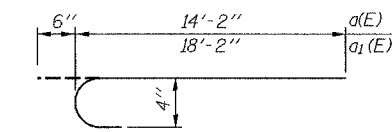


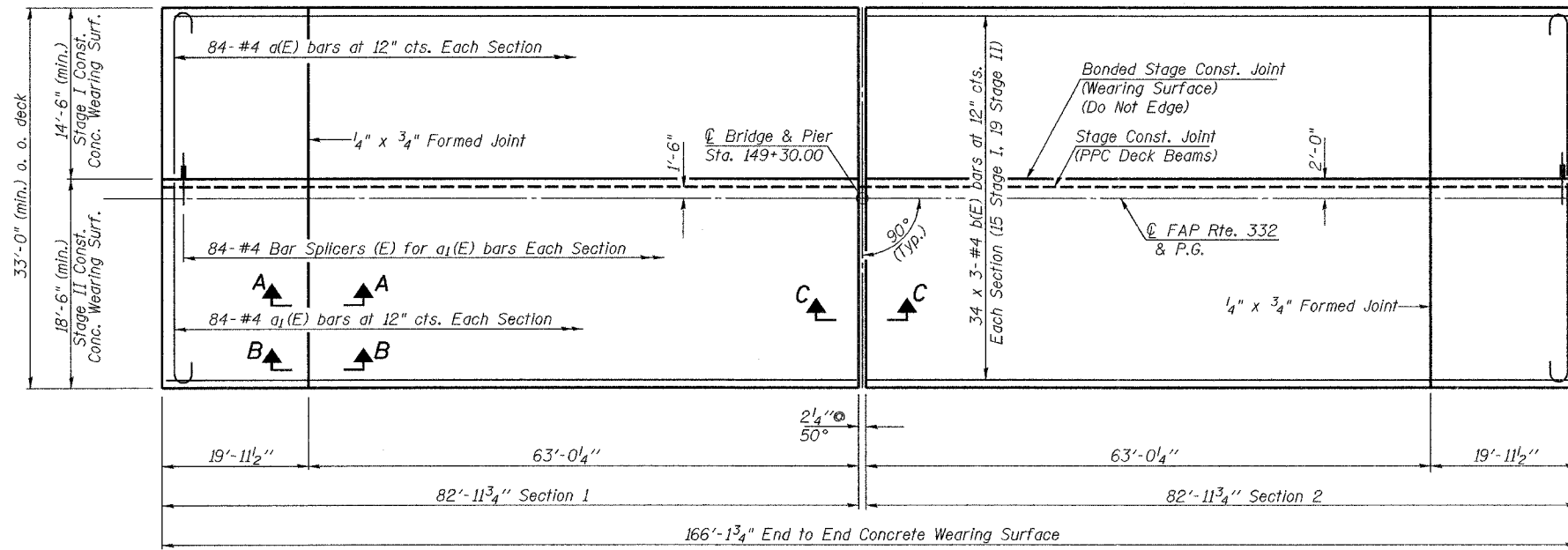
Contract # 74003



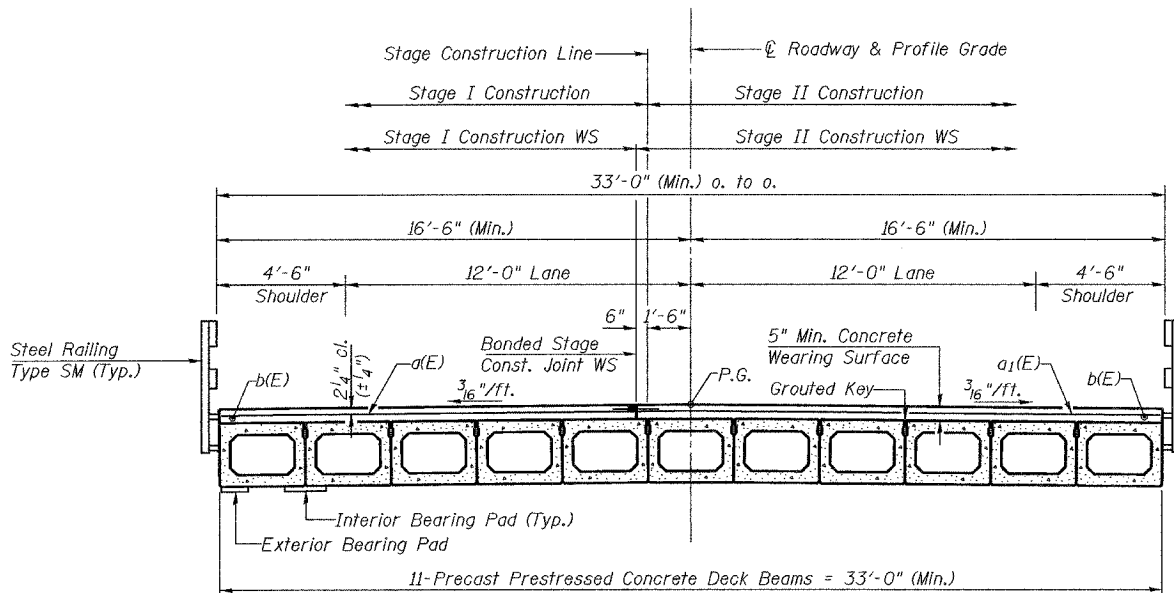
BARS a(E) and a₁(E)

**SUPERSTRUCTURE
BILL OF MATERIAL**

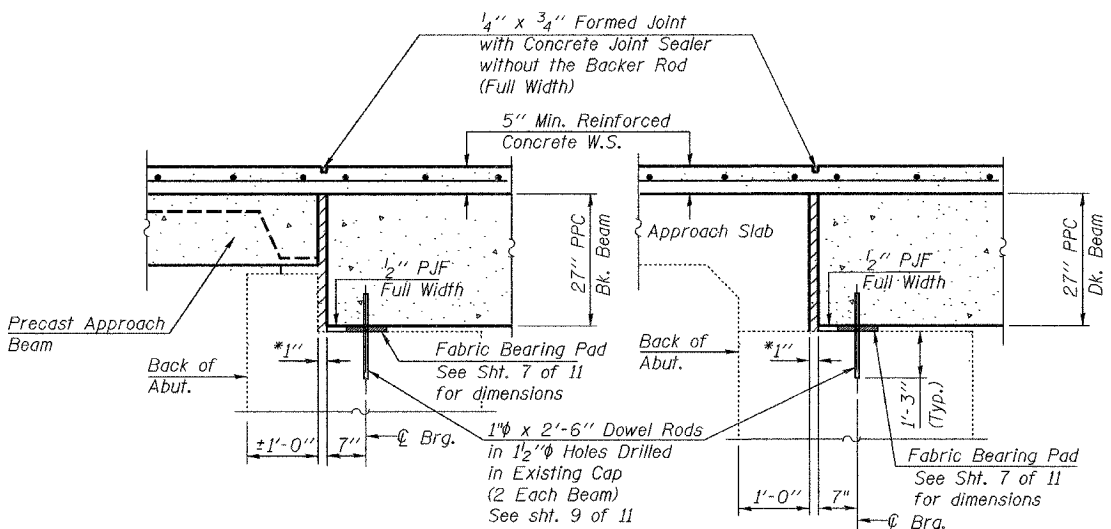
Bar	No.	Size	Length	Shape
a(E)	168	#4	14'-8"	
a ₁ (E)	168	#4	18'-8"	
b(E)	204	#4	28'-3"	
Conc. Wearing Surface, 5"	Sq. Yd.		613	
Reinforcement Bars (Epoxy Coated)	Pound		7590	
Bar Splicers	Each		168	



PLAN
Concrete Wearing Surface

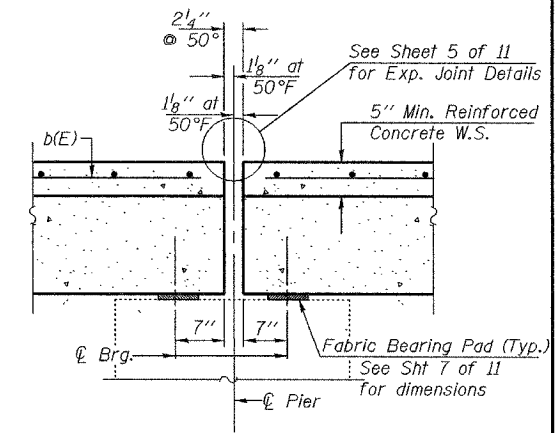


CROSS SECTION
(Looking Northeast)



SECTION B-B

SECTION A-A

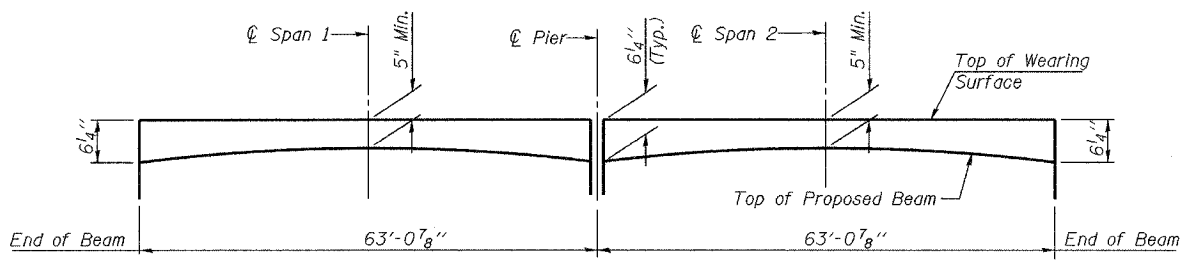


SECTION C-C

*1" Joint shall be filled with non-shrink grout.
1" dimension may vary to accommodate tolerance in beam lengths.

NOTES

Bars indicated thus 34 x 3-#4 etc, indicates 34 lines of bars with 3 lengths per line. See sheet 2 & 8 of 11 for Rail details. See sheet 11 of 11 for Bar Splicer Details. After beams have been erected, holes shall be drilled into substructure and anchor dowels placed. Dowel holes shall be filled with non-shrink grout to top of beam and allowed to cure minimum 24 hours prior to grouting the shear keys. The 5" wearing surface will be poured after the beams have been erected and the joints are grouted.



REINFORCED CONCRETE WEARING SURFACE CAMBER DIAGRAM

PLOT DATE = 04/17/07
 FILE NAME = 6033-0005-011-4-superstructure.dgn
 PLOT SCALE = 0.10000 1" / 11"
 USER NAME = TFC

ILLINOIS DEPARTMENT OF TRANSPORTATION	
SHEET TITLE	
SUPERSTRUCTURE	
PROJECT	PROJECT NO.
FAP 332 OVER BONPAS CREEK	06026
FAP ROUTE 332 (IL 1) SECTION 101B-1	DATE
WABASH COUNTY	04/17/07
STATION 149+30	DRAWN BY
SN 093-0005	TFG
	CHECKED BY
	GB/CME/MCB
	DRAWING NO.
COOMBE-BLOXDORF P.C.	
Engineers / Land Surveyors	
Springfield, Illinois	
Design Firm License No. 184-002703	
4	OF 11 SHTS