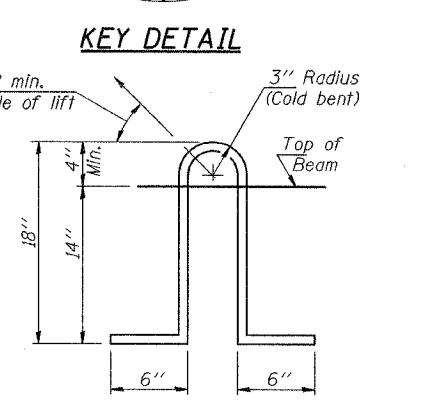
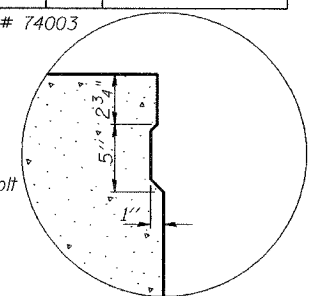


ROUTE NO.	SECTION	COUNTY	TOTAL SHEETS	SHEET	SHEET NO.
FAP 332	101B-1	WABASH	34	23	11
FED. ROAD DIST. NO. 7					ILLINOIS
FED. AID PROJECT					Contract # 74003

Contract # 74003



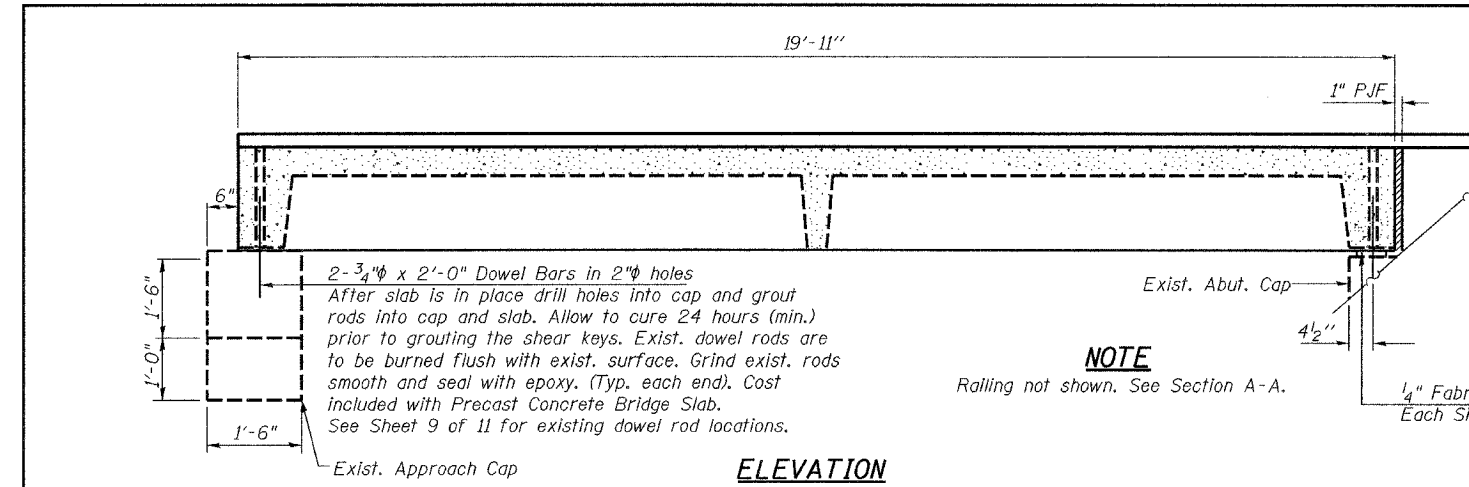
**LIFTING LOOP DETAIL**  
Lifting loops shall be 2-2"φ 270 ksi prestressing strands, as shown.

**BILL OF MATERIAL**

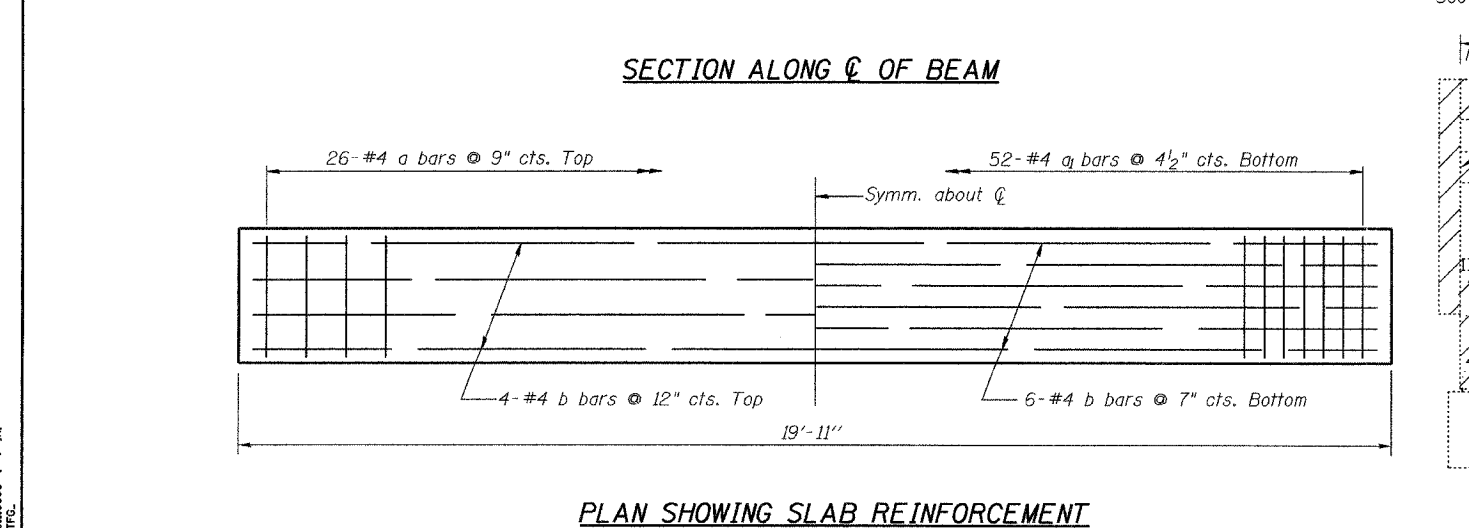
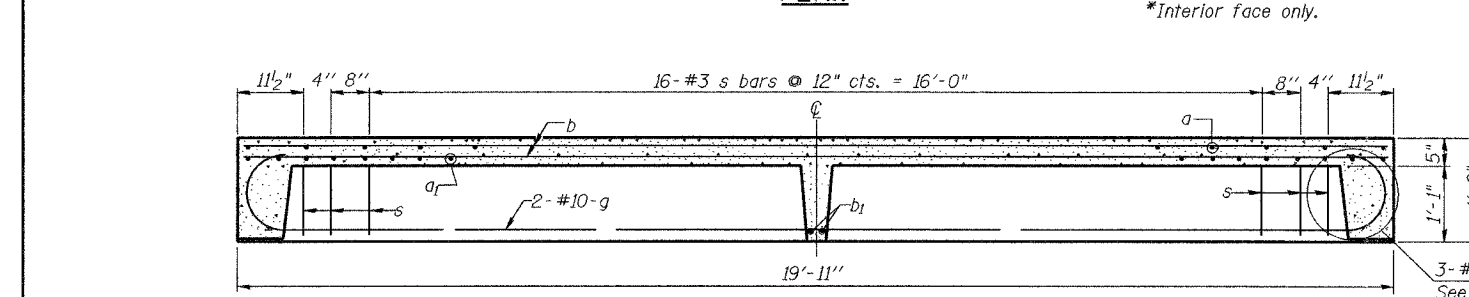
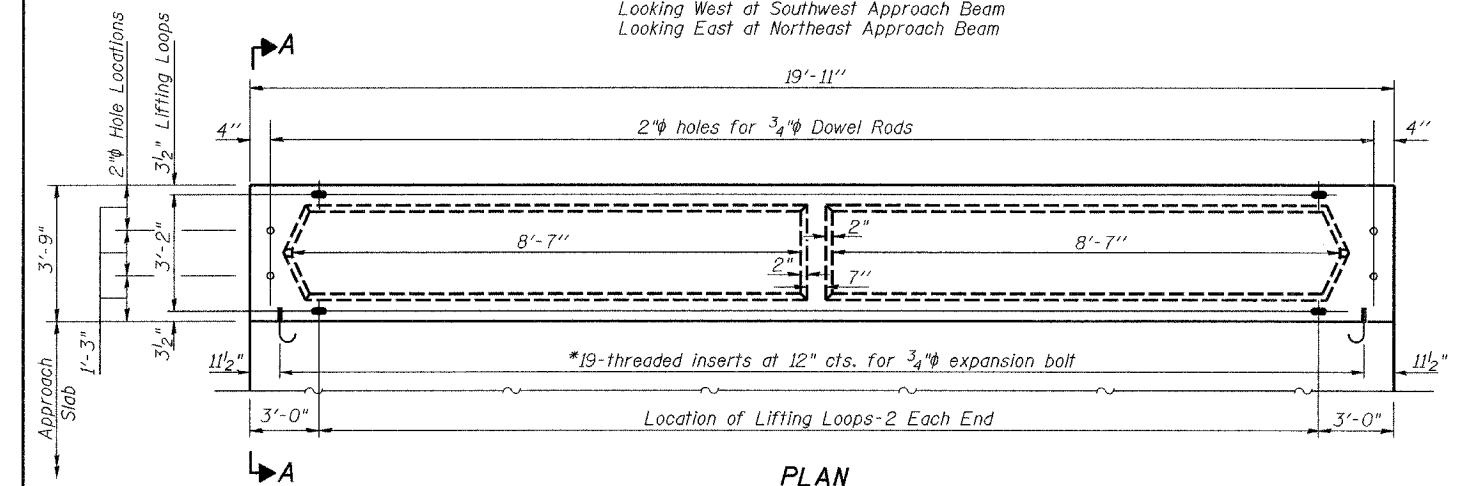
ITEM	UNIT	QUAN.
Precast Concrete Bridge Slab	Sq. Ft.	299
Removal of Existing Precast Concrete Unit	Sq. Ft.	299

**NOTES**  
 Cost of reinforcement and accessories cast into slab unit, bearing pads, furnishing, drilling for, placing and grouting anchor dowels is included in Unit bid price for "Precast Concrete Bridge Slab".  
 See Roadway Plans for Approach Slab Details.  
 Bridge rail inserts shall be cast in precast beams. See Sheet 2 of 11 for rail post spacing and Sheet 8 of 11 for rail details. Cost included with Precast Concrete Bridge Slab.  
 Tack welding of stirrups to bottom longitudinal reinforcement bars will not be permitted except as otherwise authorized in writing by the Engineer.  
 The surface of the member shall not deviate more than 1/1200 of the full length of the member from a straight line connecting the two end points on the member's surface. In addition to State inspection and prior to erection, the beam shall be tested and approved by the resident Engineer at the jobsite.  
 The units shall remain on the bottom supporting forms until the concrete has attained a compressive strength of not less than 3,500 pounds per square inch.

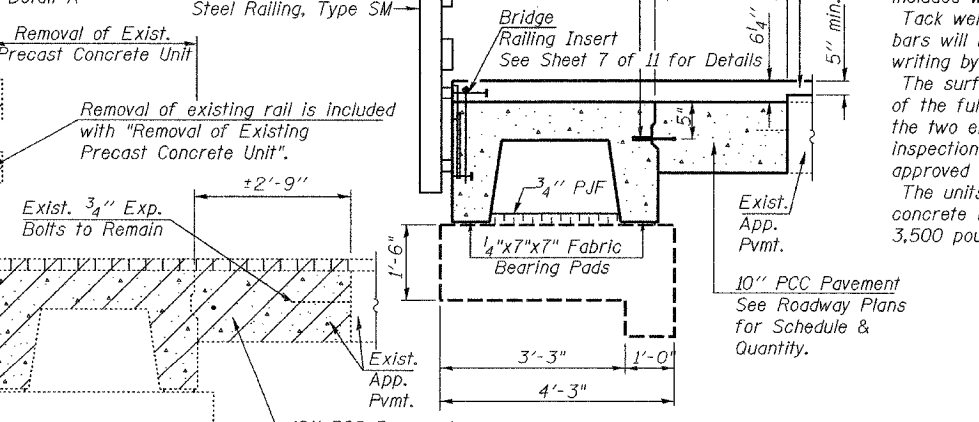
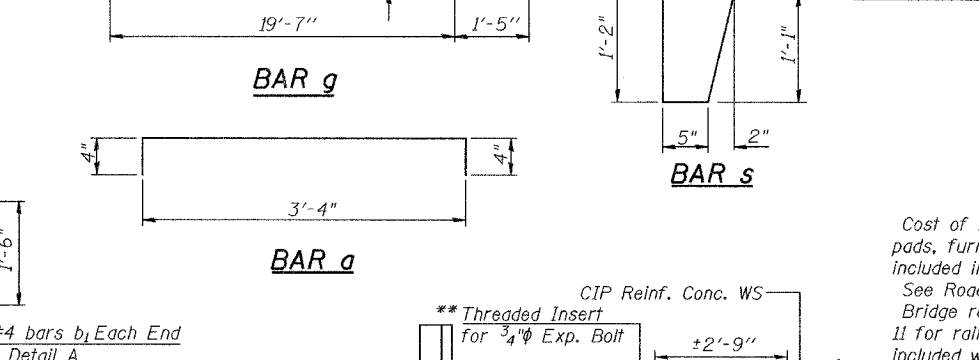
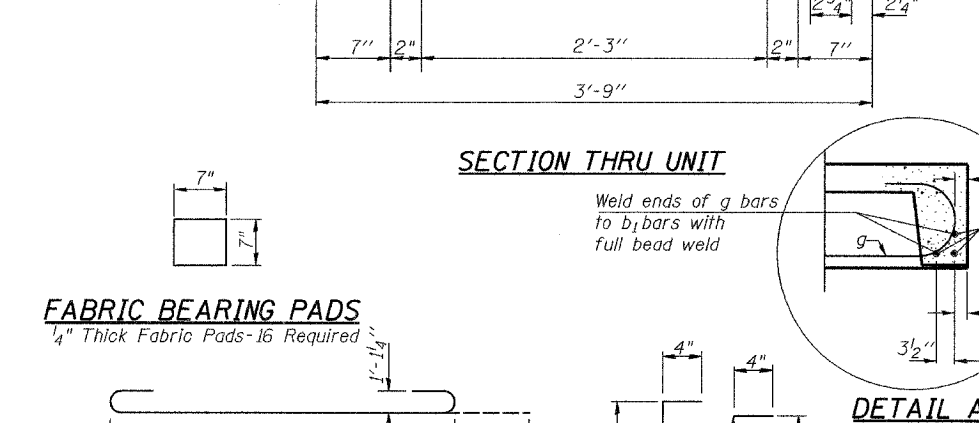
ILLINOIS DEPARTMENT OF TRANSPORTATION		
SHEET TITLE		
APPROACH BEAM DETAILS		
PROJECT	FAP 332 OVER BONPAS CREEK	PROJECT NO. 06026
SCALE	FAP ROUTE 332 (IL 1) SECTION 101B-1	DATE 03/15/07
DRAWN BY	WABASH COUNTY	CHECKED BY TFG
DRAWING NO.	STATION 149+30	DRAWING NO.
	SN 093-0005	
<b>COOMBE-BLOXDORF P.C.</b>		6
Engineers / Land Surveyors Springfield, Illinois		OF 11 SHTS
Design Firm License No. 184-002703		



**NOTE**  
Railing not shown. See Section A-A.



PLOT DATE = 03/15/2007  
 FILE NAME = \\B093-0005-sh1-e-approach-beam-deta.dgn  
 PLOT SCALE = 60.0000 3" / 1"  
 USER NAME = TFG



**SECTION A-A**  
 CIP Reinf. Conc. WS  
 Threaded Insert for 3/4" Exp. Bolt  
 Bridge Railing Insert See Sheet 7 of 11 for Details  
 ±2'-9"  
 6 1/4"  
 5" min.  
 3/4" P.J.F.  
 1/4"x7"x7" Fabric Bearing Pads  
 10" PCC Pavement To Be Removed See Roadway Plans for Schedule & Quantity.  
 Exist. App. Pvmnt.  
 Exist. App. Pvmnt.  
 Exist. 3/4" Exp. Bolts to Remain  
 Removal of Exist. Precast Concrete Unit  
 Removal of existing rail is included with "Removal of Existing Precast Concrete Unit".  
 ±2'-9"  
 3'-3"  
 4'-3"  
 1'-0"

\*\*Expansion bolts will be included in the cost of "Precast Concrete Bridge Slab".