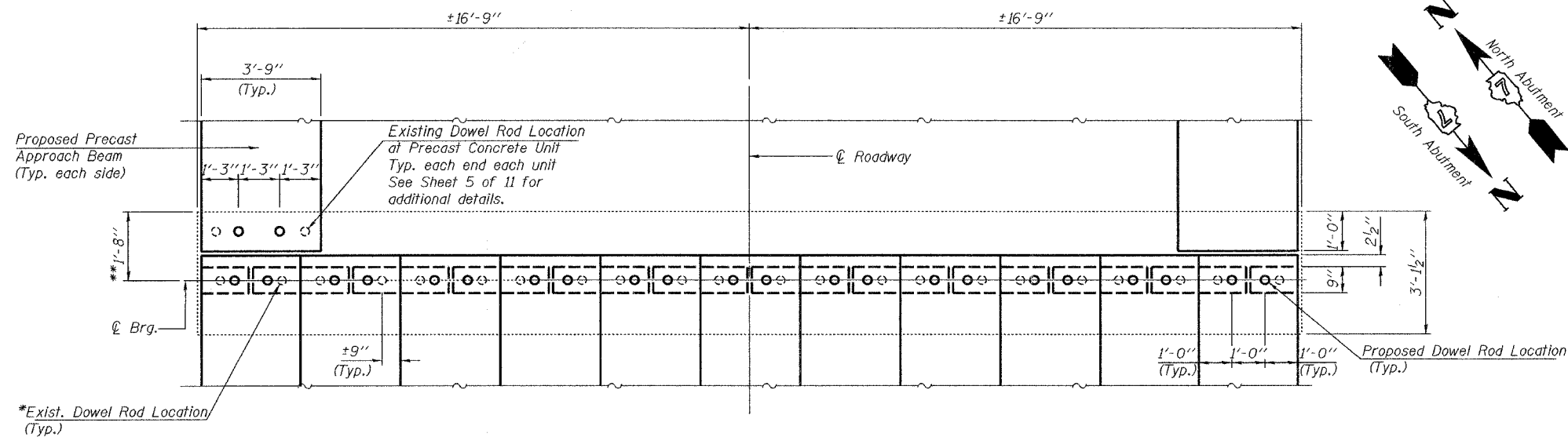


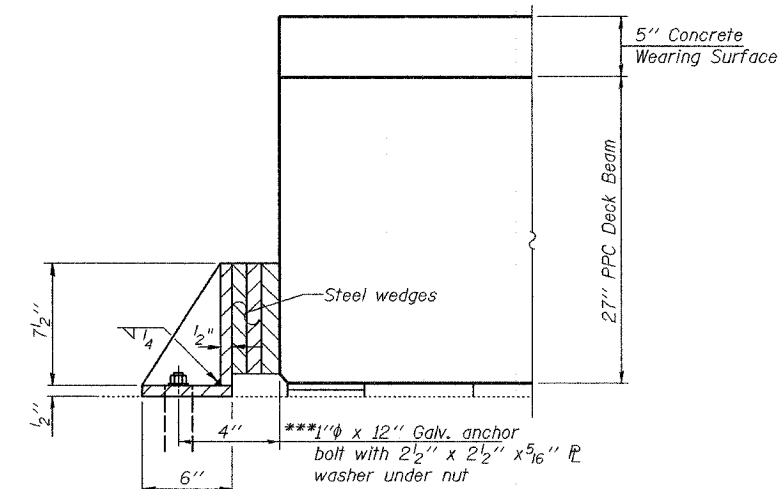
Contract # 74003



ABUTMENT PLAN
(showing dowel rod and beam locations)

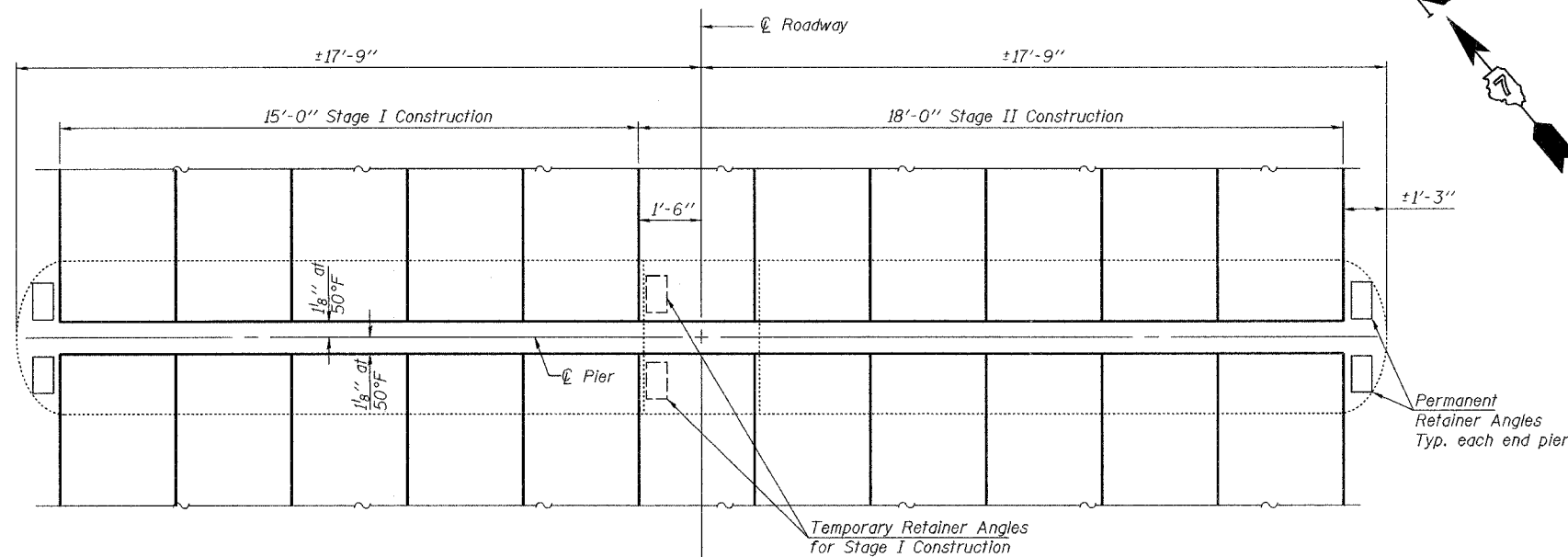
*Burn existing dowel rods flush with top of existing abutment cap. Grind existing dowel rods smooth and seal with epoxy. Cost is included with Removal of Existing Superstructures.

**Dimension may vary to accommodate tolerance in beam lengths.

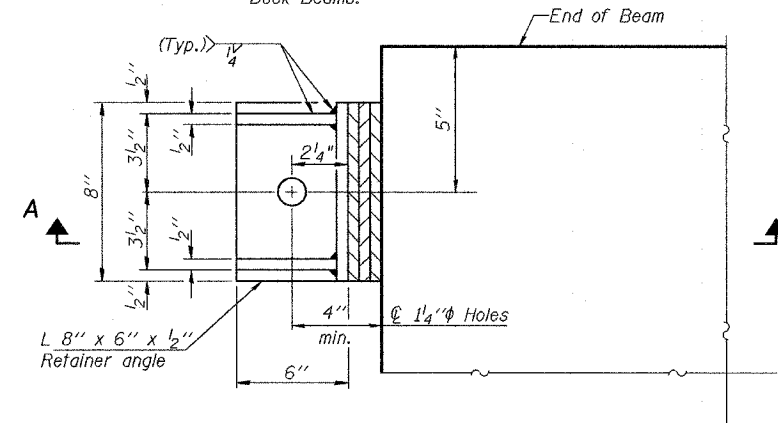


SECTION A-A

***Anchor bolts may be cast into the masonry or approved threaded rod may be placed in drilled holes and grouted in place. Cost included with Precast Prestressed Concrete Deck Beams.



PIER PLAN



PLAN RETAINER ANGLE
(Temporary and Permanent)

NOTES

Install permanent retainers at pier at west end of cap and temporary retainer at Stage Line prior to grouting Stage I shear keys. After Stage I concrete and concrete wearing surface is poured and cured the temporary retainer shall be removed. Burn existing anchor bolts flush with existing pier surface. Grind anchor bolts smooth and seal with epoxy. Install permanent retainer at east end of pier cap prior to grouting Stage II shear keys. The steel wedges shall be removed after the strip seal has been installed. Cost of retainers, accessories and removal of temporary retainer is included with Precast Prestressed Concrete Deck Beams.
The side retainers shall be galvanized after shop fabrication according to AASHTO M111 and ASTM 385.

ILLINOIS DEPARTMENT OF TRANSPORTATION	
SHEET TITLE	
ABUTMENT & PIER DETAILS	
PROJECT	PROJECT NO.
FAP 332 OVER BONPAS CREEK	06026
FAP ROUTE 332 (IL 1) SECTION 101B-1	SCALE
WABASH COUNTY	DATE
STATION 149+30	03/15/07
SN 093-0005	DRAWN BY
	TFG
	CHECKED BY
	CME/MCB
DRAWING NO.	
COOMBE-BLOXDORF P.C.	
Engineers / Land Surveyors	
Springfield, Illinois	
Design Firm License No. 184-002703	
9	OF 11 SHTS