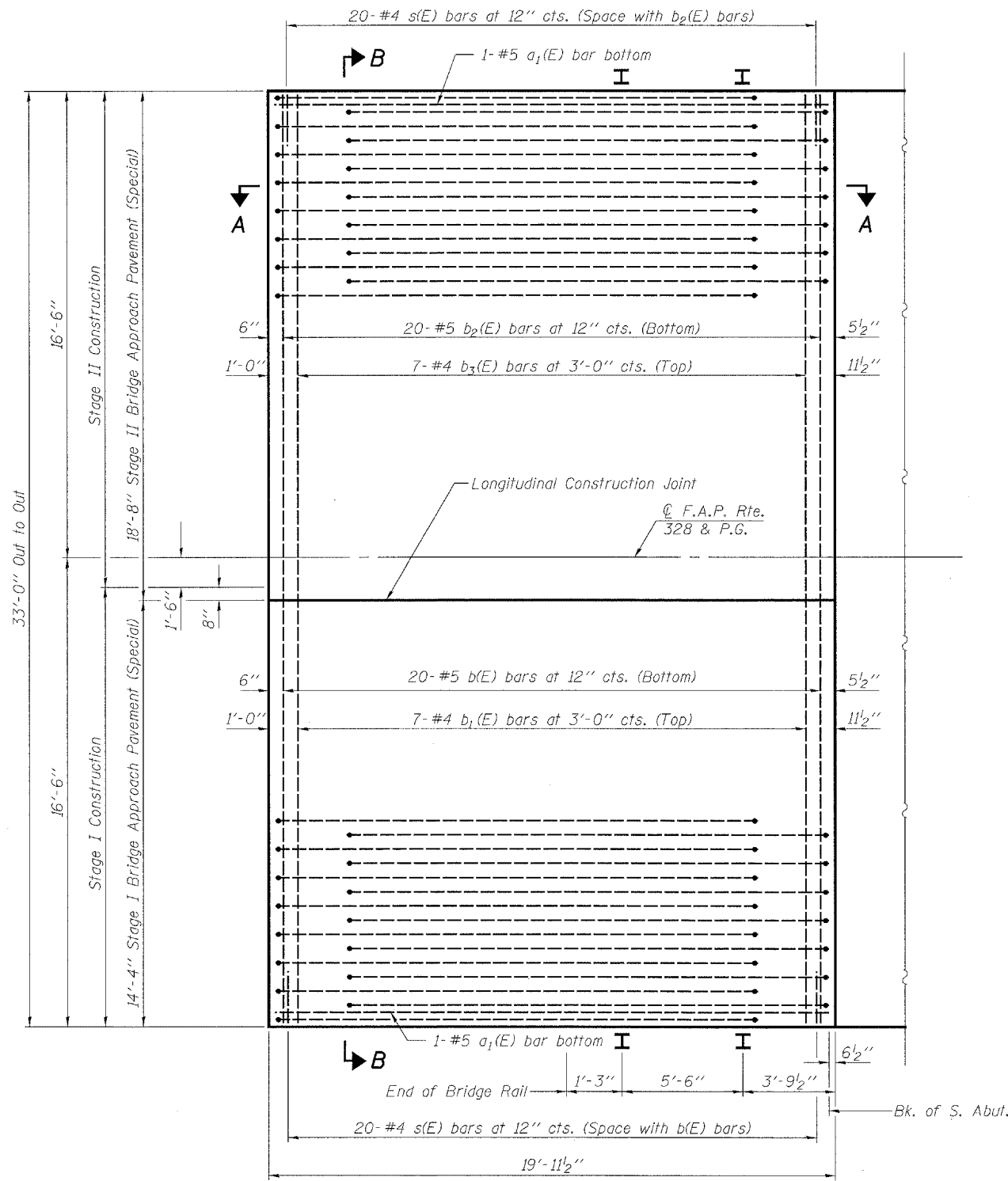


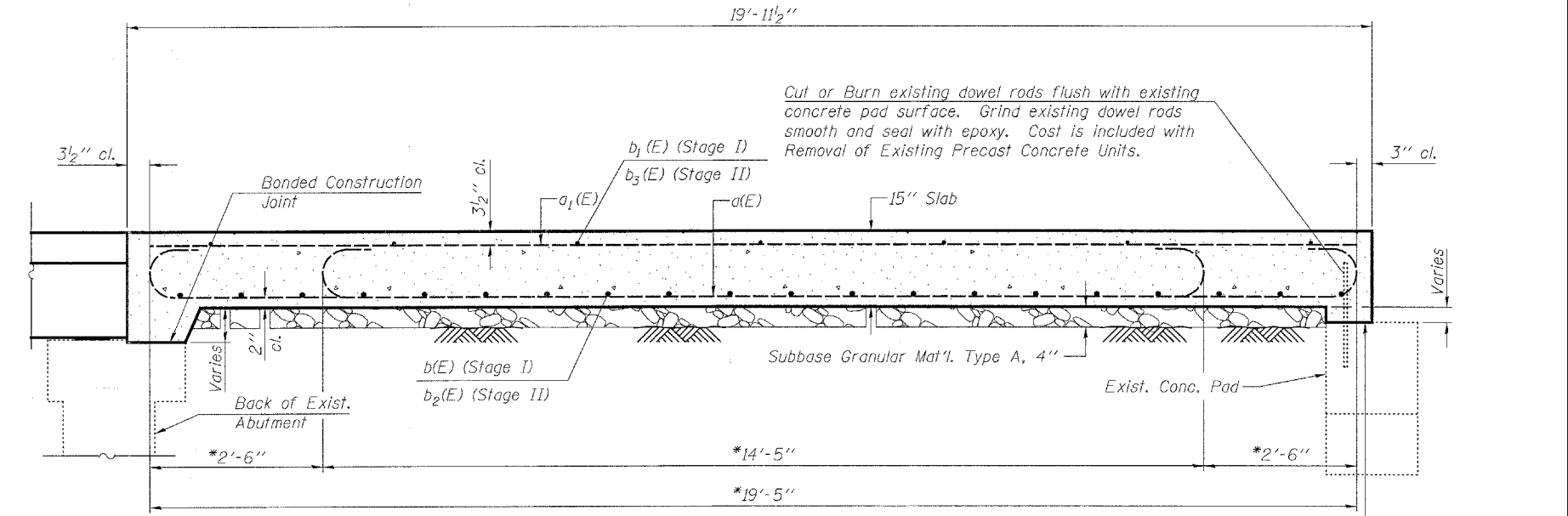
Contract #74041



**PLAN**  
(Approach Beam at N. Abut. is mirror image of S. Abut.)

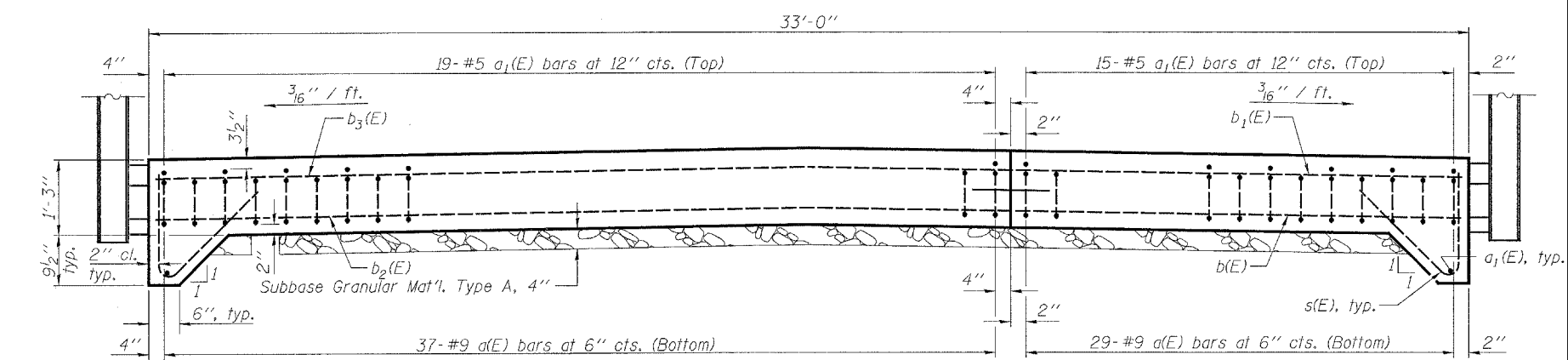
|          |     |
|----------|-----|
| DESIGNED | JJD |
| CHECKED  | EML |
| DRAWN    | JJD |
| CHECKED  | EML |

Notes:  
Removal of existing approach beams are included in Removal of Existing Precast Concrete Units.  
See roadway plans for Approach Slab Removal quantity.  
Removal of Existing Precast Concrete Units and Existing Bridge Approach Pavement shall occur during its respective stage construction and prior to placement of the new deck beams.  
See Special Provisions for Bridge Approach Pavement (Special).  
See sheet 4 of 13 for rail anchor device to be cast in approach pavement.

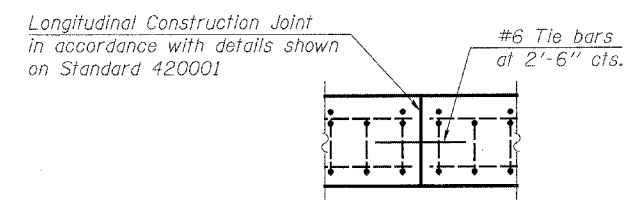


**SECTION A-A**

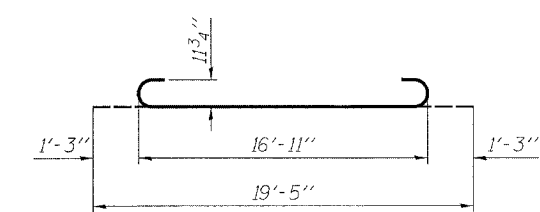
\* Stagger No. 9 a(E) bars as shown on plan.



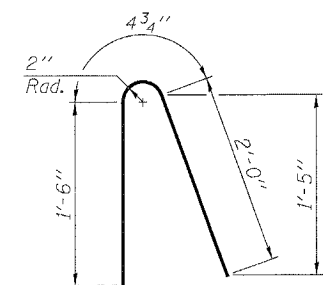
**SECTION B-B**



**LONGITUDINAL CONSTRUCTION JOINT**



**BAR d(E)**



**BAR s(E)**

**BAR LIST**

| Bar   | No. | Size | Length | Shape |
|-------|-----|------|--------|-------|
| a(E)  | 132 | #9   | 19'-5" | U     |
| a1(E) | 72  | #5   | 19'-5" | —     |
| b(E)  | 40  | #5   | 14'-0" | —     |
| b1(E) | 14  | #4   | 14'-0" | —     |
| b2(E) | 40  | #5   | 18'-4" | —     |
| b3(E) | 14  | #4   | 18'-4" | —     |
| s(E)  | 80  | #4   | 3'-11" | N     |

**BILL OF MATERIAL**

| Item                                       | Unit    | Total |
|--|---------|-------|
| Bridge Approach Pavement (Special)         | Sq. Yd. | 146   |
| Removal of Existing Precast Concrete Units | Sq. Ft. | 299   |

**BRIDGE APPROACH PAVEMENT (SPECIAL)**  
**F.A.P. ROUTE 328 - SECTION (8BR-1)B-1**  
**WAYNE COUNTY**  
**STATION 719+63.09**  
**STRUCTURE NO. 096-0020**

