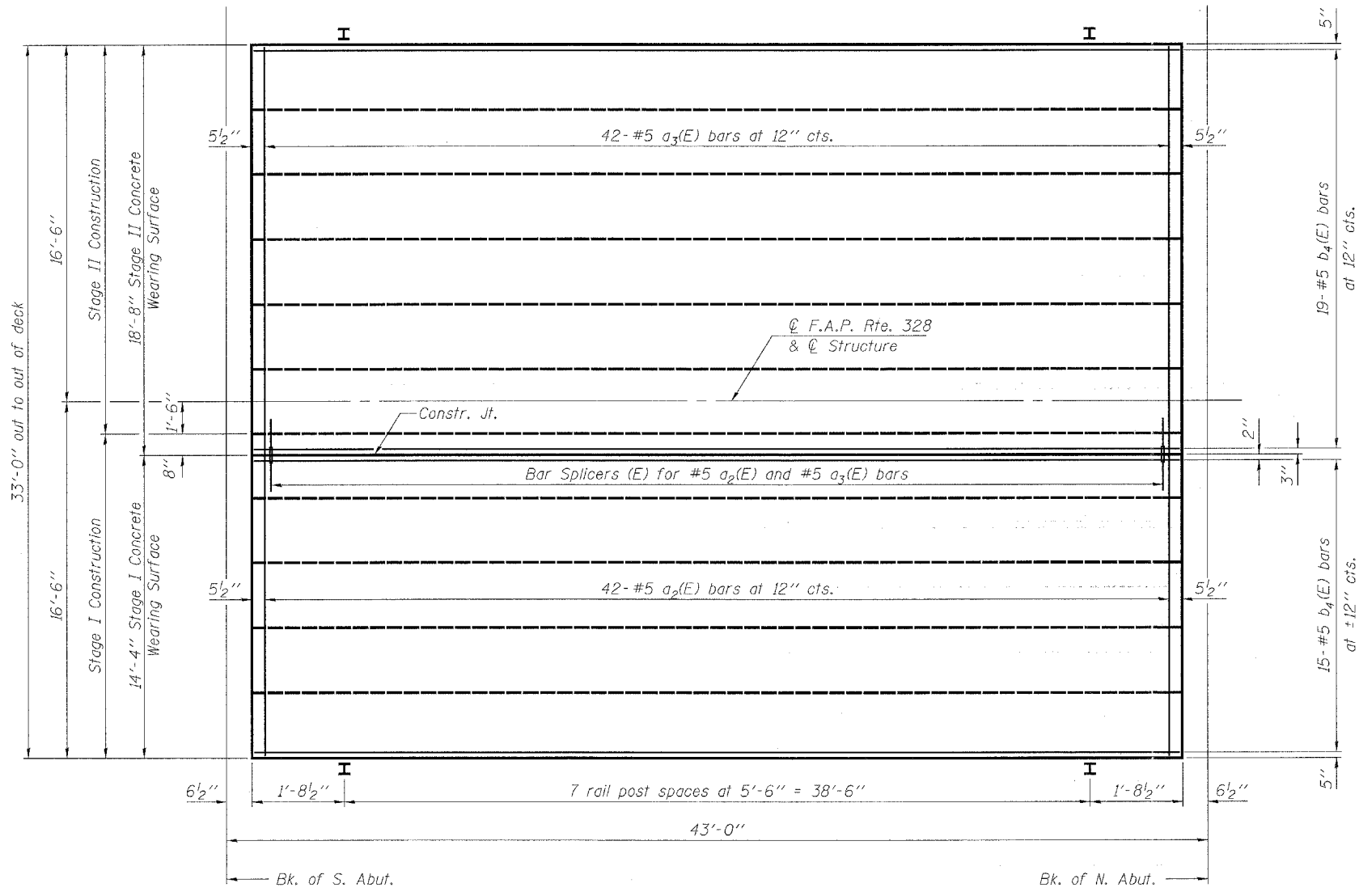


STATE OF ILLINOIS
DEPARTMENT OF TRANSPORTATION

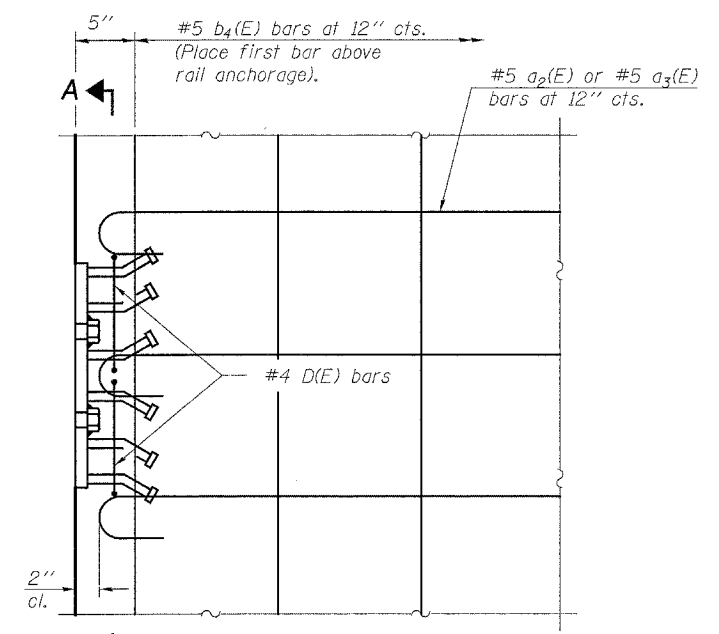
ROUTE NO.	SECTION	COUNTY	DIST. SHEETS	SHEET NO.	SHEET NO. 6 13 SHEETS
F.A.P. 328	(8BR-1) B-1	WAYNE	39	22	
FED. ROAD DIST. NO. 7	ILLINOIS	FED. AID PROJECT-			

Contract #74041



PLAN

Notes:
Rail spacing the same on both sides of the bridge.
See sheet 5 of 13 for end of bridge rail location.

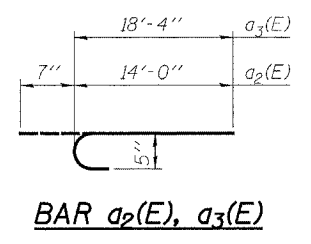


PLAN

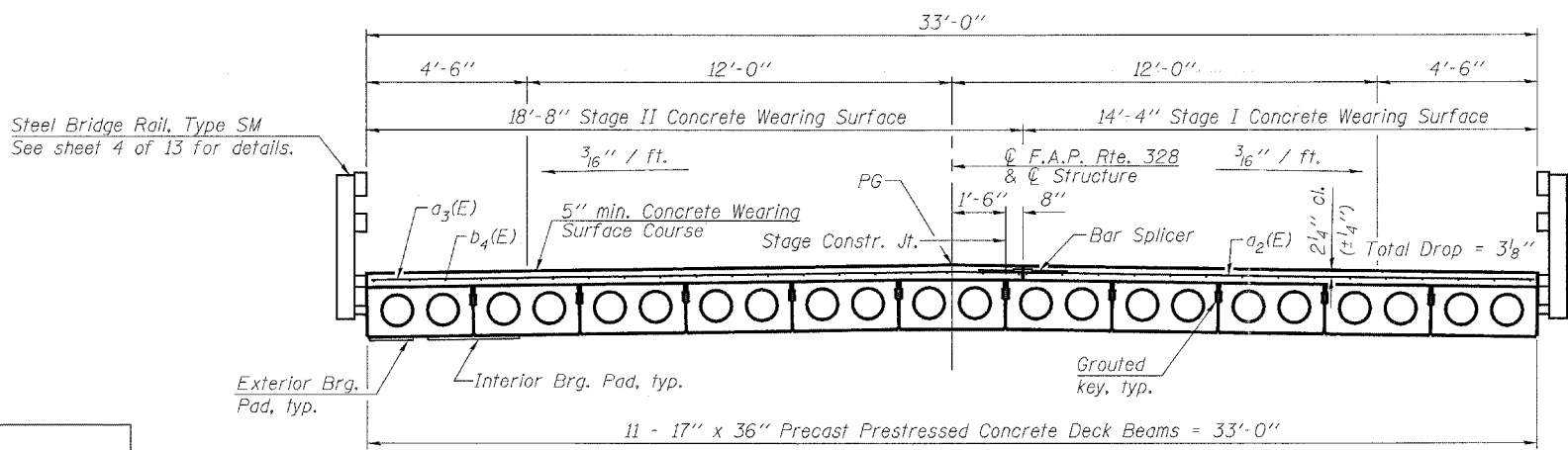
Notes:
The rail anchorage shall be cast with the beam and the wearing surface shall be cast in the field. Formwork necessary for the wearing surface may be secured utilizing the bottom rail anchorage inserts and/or additional inserts cast into the beam. Drilling into the beam will not be permitted.

SUPERSTRUCTURE
BILL OF MATERIALS

Bar	No.	Size	Length	Shape	
a ₂ (E)	42	#5	14'-7"	U	
a ₃ (E)	42	#5	18'-11"	U	
b ₄ (E)	34	#5	41'-7"	—	
Reinforcement Bars, Epoxy Coated				Pound	2,940
Concrete Wearing Surface				Sq. Yd.	154



BAR a₂(E), a₃(E)



CROSS SECTION

DESIGNED	JJD
CHECKED	EML
DRAWN	JJD
CHECKED	EML

HORNER & SHIFRIN, INC.
ENGINEERS

SUPERSTRUCTURE DETAILS
F.A.P. ROUTE 328 - SECTION (8BR-1)B-1
WAYNE COUNTY
STATION 719+63.09
STRUCTURE NO. 096-0020