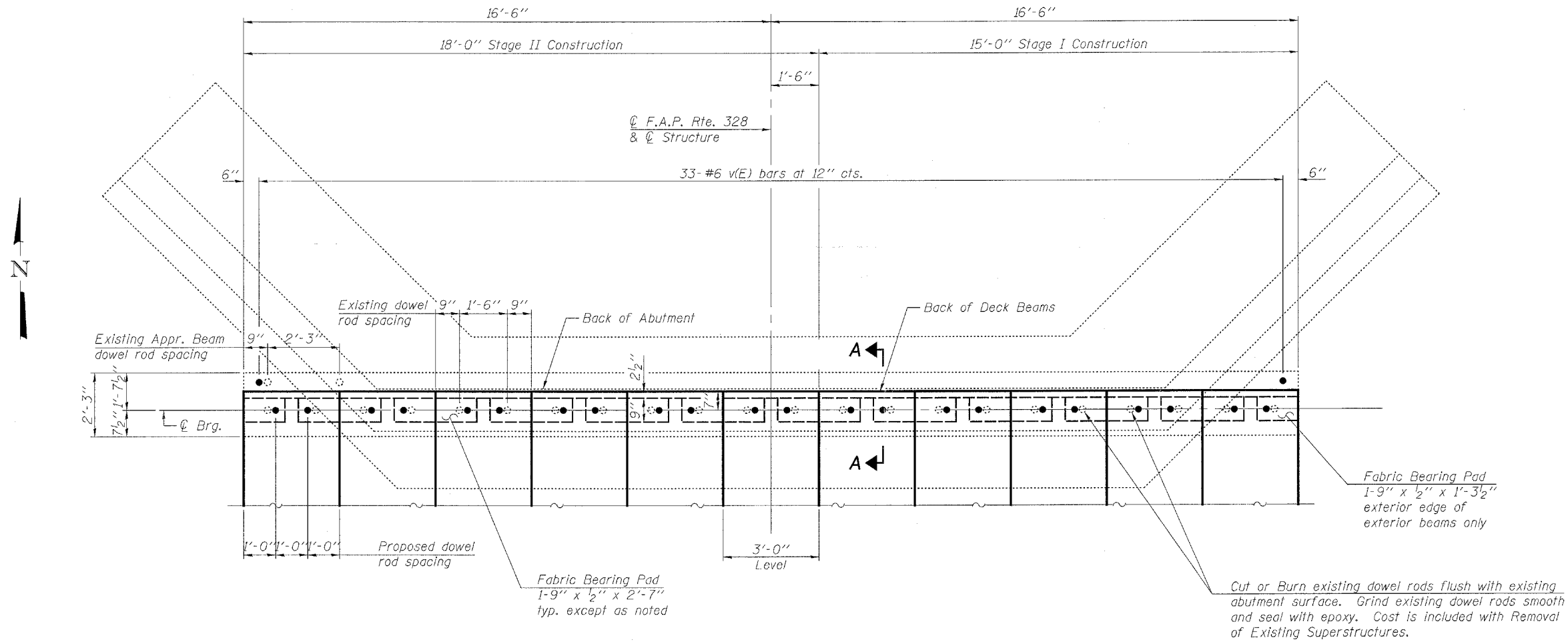


STATE OF ILLINOIS
DEPARTMENT OF TRANSPORTATION

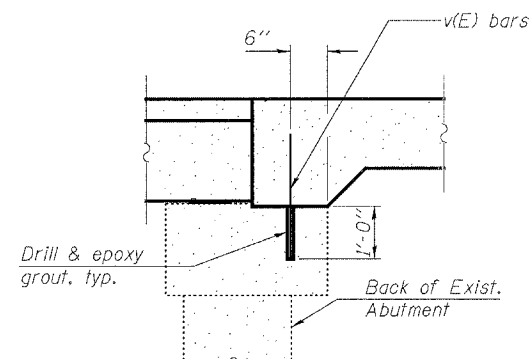
| | | | | | |
|-----------------------|-------------|-------------------|--------------|-----------|--------------------------|
| ROUTE NO. | SECTION | COUNTY | TOTAL SHEETS | SHEET NO. | SHEET NO. 9 13 SHEETS |
| F.A.P. 328 | (8BR-1) B-1 | WAYNE | 39 | 25 | |
| FED. ROAD DIST. NO. 7 | ILLINOIS | FED. AID PROJECT- | | | |

Contract #74041



PLAN

(N. Abutment Shown, S. Abutment is a mirror image)
(Concrete wearing surface not shown)



SECTION A-A

BAR LIST

| Bar | No. | Size | Length | Shape |
|-------------------------------------|-----|------|--------|-------|
| v(E) | 66 | #6 | 2'-6" | — |
| Reinforcement Bars, Epoxy Coated | | | Pound | 250 |

| | |
|----------|-----|
| DESIGNED | JJD |
| CHECKED | EML |
| DRAWN | JJD |
| CHECKED | EML |

HORNER & SHIFRIN, INC.
ENGINEERS

ABUTMENT DETAILS
F.A.P. ROUTE 328 - SECTION (8BR-1)B-1
WAYNE COUNTY
STATION 719+63.09
STRUCTURE NO. 096-0020