

F.A. RTE.	SECTION	COUNTY	TOTAL SHEETS	SHEET NO.
2	27RS-2, 28, 29RS-2	ST. CLAIR	7	1

FAU 9251/FAS 1848/FAU 9288
SECTION 27RS-2, 28, 29RS-2

STATE OF ILLINOIS
DEPARTMENT OF TRANSPORTATION
DIVISION OF HIGHWAYS

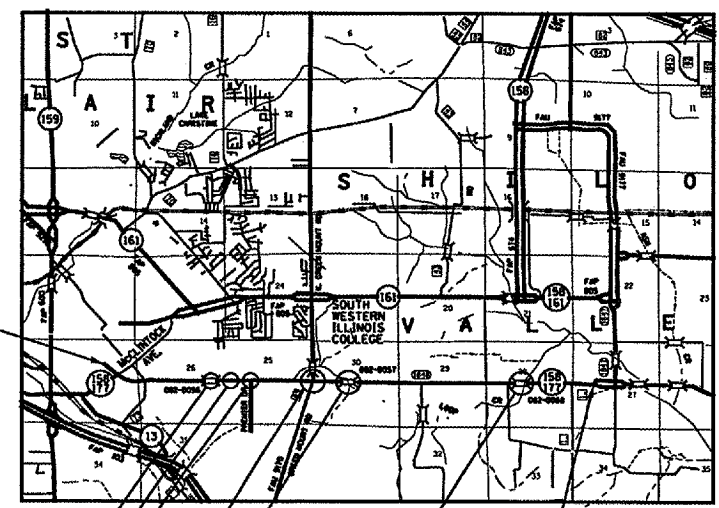
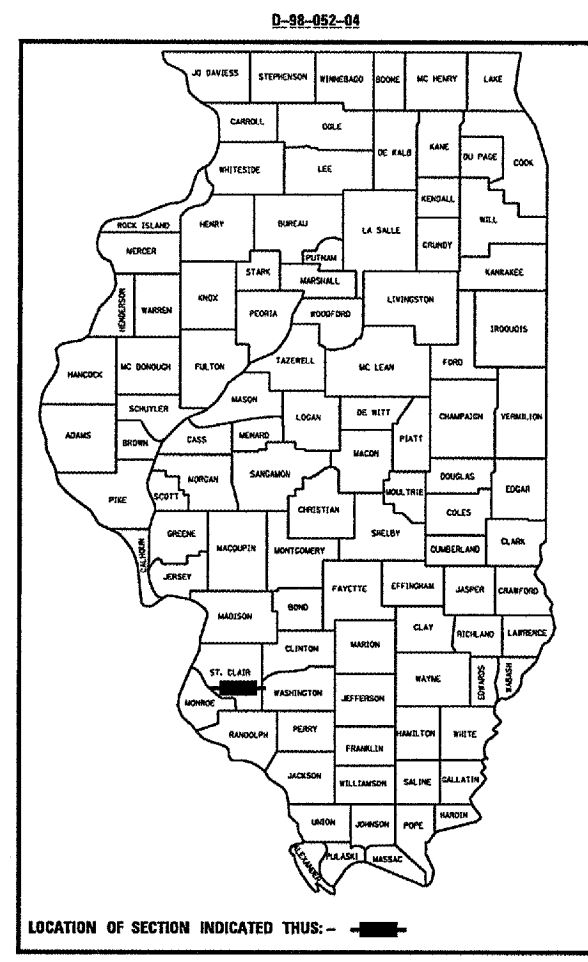
**PROPOSED
HIGHWAY PLANS**

FAU 9251/FAS 1848/FAU 9288
SECTION 27RS-2, 28, 29RS-2

ST. CLAIR COUNTY

C-98-062-04

FOR INDEX OF SHEETS, SEE SHEET NO. 2



BEGIN SECTION
27RS-2, 28, 29RS-2
STA. 100+70

END SECTION
27RS-2, 28, 29RS-2
MILE 394+40

OMISSION
BEGIN STA. 148+54
END STA. 148+95

OMISSION
BEGIN STA. 224+80
END STA. 228+22

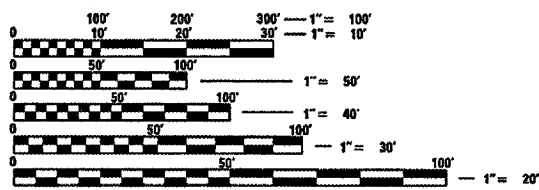
OMISSION
BEGIN STA. 355+83
END STA. 356+54

OMISSION
BEGIN STA. 157+80
END STA. 173+65

OMISSION
BEGIN STA. 175+00
END STA. 185+00

OMISSION
BEGIN STA. 243+46
END STA. 253+41

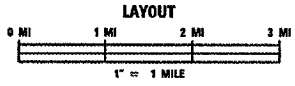
MICROFILMED _____
REEL NUMBER _____
AWARDED _____
RESIDENT ENGINEER _____
AS BUILT CHANGES WERE MADE
ON THE FOLLOWING SHEETS



FULL SIZE PLANS HAVE BEEN PREPARED USING STANDARD ENGINEERING SCALES. REDUCED SIZED PLANS WILL NOT CONFORM TO STANDARD SCALES. IN MAKING MEASUREMENTS ON REDUCED PLANS, THE ABOVE SCALES MAY BE USED.

J.U.L.I.E.
JOINT UTILITY LOCATION INFORMATION FOR EXCAVATION
1-800-892-0123

2007 ADT - 9200
2027 ADT - 13400
SU = 4.5%, MU = 2.8%



GROSS LENGTH - 29370, 5.563 MILES
NET LENGTH - 25336, 4.798 MILES

STATE OF ILLINOIS
DEPARTMENT OF TRANSPORTATION
DIVISION OF HIGHWAYS

SUBMITTED May 17 20 07
May C. Ramis
DEPUTY DIRECTOR OF HIGHWAYS
REGION FIVE ENGINEER

June 29 20 07
Eric E. Hamill
ENGINEER OF DESIGN AND ENVIRONMENT

June 29 20 07
Melton R. Sees P.E.
DIRECTOR, DIVISION OF HIGHWAYS

**PRINTED BY THE AUTHORITY
OF THE STATE OF ILLINOIS**

PROJECT ENGINEER: PATTI LEBEAU (618)346-3179
SQUAD LEADER: CHERYL KEPLAR (618)346-3186

CONTRACT NO. 76791

F.A. RTE.	SECTION	COUNTY	TOTAL SHEETS	SHEET NO.
:	:	MADISON	7	2
STA. _____ TO STA. _____				
FED. ROAD DIST. NO. ILLINOIS FED. AID PROJECT				
: EAU 9251 / FAS 1848 / FAU 9288				
: 27RS-2, 28, 29RS-2				

GENERAL NOTES

1 ILLINOIS STATE LAW REQUIRES A 48-HOUR NOTICE BE GIVEN TO ALL UTILITIES BEFORE DIGGING. FIELD MARKING OF FACILITIES MAY ALSO BE OBTAINED BY CALLING J.U.L.I.E. AND FOR NON-J.U.L.I.E. MEMBERS, THE UTILITY COMPANY DIRECTLY. AGENCIES KNOWN TO HAVE FACILITIES WITHIN THE PROJECT AREA ARE AS FOLLOWS:

ALL UTILITIES LISTED ARE MEMBERS OF J.U.L.I.E. (800) 892-0123

- AMEREN IP - ELECTRIC, AERIAL AND BURIED
- AMEREN IP - GAS, BURIED
- CITY OF BELLVILLE - SANITARYSEWER, BURIED
- CHARTER COMMUNICATIONS, INC - CABLE TV, AERIAL AND BURIED
- ILLINOIS AMERICAN WATER COMPANY - WATER, BURIED
- LEVEL 3 COMMUNICATIONS, LLC - COMMUNICATIONS, BURIED
- MCI NETWORK SERVICES, INC - COMMUNICATIONS, BURIED
- 36ONETWORKS (USA) INC - COMMUNICATIONS - BURIED
- AT&T ILLINOIS - COMMUNICATIONS, AERIAL AND BURIED

2 THE THICKNESS OF BITUMINOUS MIXTURE SHOWN ON THE PLANS IS THE NOMINAL THICKNESS. DEVIATIONS MAY OCCUR DUE TO IRREGULARITIES IN THE EXISTING SURFACE OR BASE ON WHICH THE BITUMINOUS MIXTURE IS PLACED.

3 THE VARIOUS THICKNESS OF BITUMINOUS SURFACE REMOVAL SHOWN ON THE PLANS ARE THE AVERAGE THICKNESS BASED UPON CONTROLLING THICKNESS AS INDICATED. DEVIATIONS FROM THE NOMINAL THICKNESS WILL BE PERMITTED WHEN SUCH DEVIATIONS OCCUR DUE TO IRREGULARITIES IN THE EXISTING SURFACE. BITUMINOUS SURFACE REMOVAL HAS BEEN INCLUDED IN THE PLANS FOR THE PURPOSE OF REMOVING HIGH IRREGULARITIES AND TO ESTABLISH CROSS SLOPE.

11 THE FOLLOWING MIXTURE REQUIREMENTS ARE APPLICABLE TO THE PROJECT.

MIXTURE REQUIREMENTS - SUPERPAVE PROJECT

FAU 9251/FAS 1848
27RS-2, 28, 29RS-2
ST. CLAIR COUNTY
CONTRACT # 76791

MILLING AND RESURFACING, PATCHING AND GUARDRAIL IMPROVEMENTS ON IL 158/177 FROM MCCLINTOCK AVE. IN BELLEVILLE TO IL 158 JCT.

ADT (Construction Yr):	8900
MUZ:	2.8
SLZ:	4.5
20 YR. ESAL'S:	1.91

MIXTURE USE	SURFACE	LEVEL BINDER	INCIDENTAL SURF	Partial Depth Patch	SHOULDERS
AC/PG	PG 64-22	PG 64-22	PG 64-22	PG 64-22	PG 58-22
RAP % (MAX)	10%	10%	10%	10%	30%
DESIGN AIR VOIDS	4.0% @ Ndes= 70	4.0% @ Ndes= 70	4.0% @ Ndes= 70	4.0% @ Ndes= 70	2.0% @ Ndes=30
MIX COMPOSITION (GRADATION MIXTURE)					
FRICTION AGG	MIXTURE "D"	MIXTURE "C"	MIXTURE "C"	MIXTURE "C"	BAM

** Top Lift Shoulders - Design this mix at 2.0% voids and add asphalt to reduce voids to 1.5%.

Plan quantities for Bituminous Concrete Surface Course Items are calculated using a unit weight of 112 lb/sq yd (59.8 kg/sq m/25 mm thickness).

4 THE WIDTHS OF BITUMINOUS SURFACE REMOVAL SHOWN ON THE PLANS ARE THE NOMINAL WIDTHS. IRREGULARITIES IN THE SURFACE WIDTH MAY OCCUR THROUGHOUT THE LENGTH OF THE SECTION. BITUMINOUS SURFACE REMOVAL WILL BE PAID FOR IN SQUARE FEET BASED UPON THE NOMINAL WIDTHS INDICATED.

5 FLAGMEN SHALL BE REQUIRED AT ALL TIMES DURING PATCHING OPERATIONS.

6 ROAD CONSTRUCTION AHEAD SIGNS SHALL BE REQUIRED AT INTERSECTING SIDE ROADS THROUGHOUT THE PROJECT. COST TO BE INCLUDED IN BID PRICES FOR TRAFFIC CONTROL AND PROTECTION.

7 FURNISHED EXCAVATION HAS BEEN INCLUDED IN THE PLANS FOR EARTHWORK NECESSARY TO INSTALL "TRAFFIC BARRIER TERMINAL, TYPE 1, SPECIAL (TANGENT)" IN THE NW QUADRANT OF SN 082-0056 ACCORDING TO STANDARD 630301. ALL SEEDING, MULCH, & NUTRIENTS NEEDED FOR THIS AREA SHALL BE INCLUDED IN THE COST OF "FURNISHED EXCAVATION".

8 THE CONTRACTOR AND THE ENGINEER SHALL BE AWARE THAT NO SURVEY WAS PERFORMED FOR THIS PROJECT. THE STATIONING AND TOPO SHOWN IN THE PLANS WAS CREATED USING MICROFILM AND FIELD MEASUREMENTS MADE BY DESIGN PERSONNEL. BOTH SHALL BE ASSUMED TO BE APPROXIMATE

9 ROAD CONSTRUCTION AHEAD SIGNS SHALL BE PLACED AT THE BEGINNING AND END OF THE PROJECT PLUS THE INTERSECTING SIDE ROADS, AND WILL BE INCLUDED IN THE TRAFFIC CONTROL PAY ITEMS. ALL CONSTRUCTION SIGNS SHALL BE FLUORESCENT ORANGE.

10 ALL TEMPORARY PAVEMENT MARKINGS WILL BE PLACED IN SUCH A MANNER SO AS NOT TO INTERFERE WITH THE PLACEMENT OF PERMANENT PAVEMENT MARKINGS

INDEX OF SHEETS

- 1 COVER SHEET
- 2 INDEX OF SHEETS, GENERAL NOTES & HIGHWAY STANDARDS
- 3 SUMMARY OF QUANTITIES
- 4 EXISTING TYPICAL SECTIONS
- 5 PROPOSED TYPICAL SECTIONS
- 6 SCHEDULE OF QUANTITIES AND DETAILS
- 7 DETECTOR LOOP REPLACEMENT

HIGHWAY STANDARDS

442101-06	701336-04
482011-02	701501-03
630301-04	701502-01
635006-02	702001-06
635011-01	780001-01
701001-01	781001-02
701006-02	886001
701011-01	886006
701201-02	000001-04
701301-02	001001-01
701306-01	001006
	701311-02

COMMITMENTS

NONE

REVISIONS		ILLINOIS DEPARTMENT OF TRANSPORTATION INDEX OF SHEETS, GENERAL NOTES, STANDARDS AND COMMITMENTS FAU 9251 / FAS 1848 / FAU 9288 SECTION 27RS-2, 28, 29RS-2 ST. CLAIR COUNTY
NAME	DATE	
		SCALE: VERT. _____ HORIZ. _____ DATE _____ DRAWN BY _____ CHECKED BY _____

F.A. RTE.	SECTION	COUNTY	TOTAL SHEETS	SHEET NO.
:	:	WABSON	7	3
STA.		TO STA.		
FED. ROAD DIST. NO.		ILLINOIS FED. AID PROJECT		
:		EAU 9251-2-EAS-1848-2-EAU-9288		
:		2185-2-28-2985-2		

ILLINOIS DEPARTMENT OF TRANSPORTATION

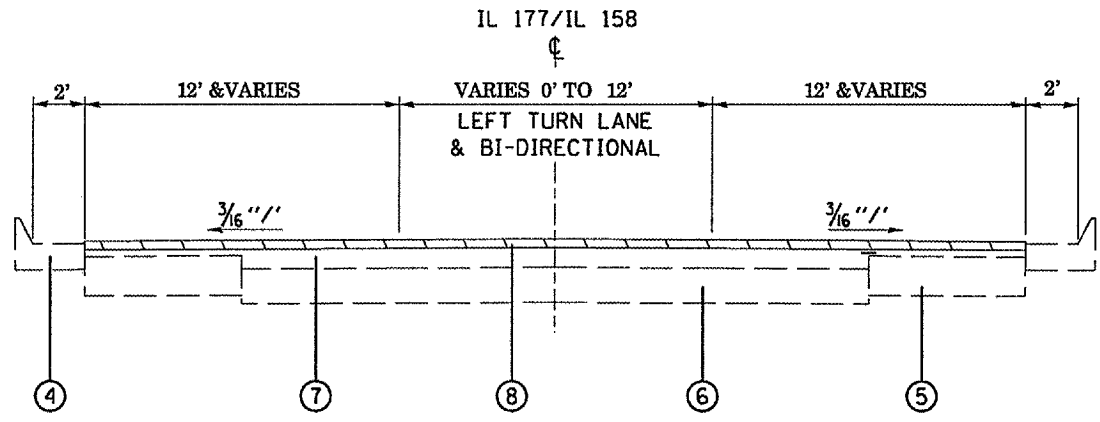
SUMMARY OF QUANTITIES

SUMMARY OF QUANTITIES			TOTAL QUANTITIES	CONSTRUCTION TYPE CODE		
CODE NO	ITEM	UNIT		1000-2A 100% STATE		
20400800	FURNISHED EXCAVATION	CU YD	7	7		
40300200	BITUMINOUS MATERIALS (PRIME COAT)	TON	46.4	46.4		
40600300	AGGREGATE (PRIME COAT)	TON	223	223		
40600635	LEVELING BINDER (MACHINE METHOD), N70	TON	3116	3116		
40600990	TEMPORARY RAMP	SQ YD	675	675		
40603340	HOT-MIX ASPHALT SURFACE COURSE, MIX "D", N70	TON	6232	6232		
40800020	BITUMINOUS MATERIALS (PRIME COAT)	TON	0.3	0.3		
40800030	AGGREGATE (PRIME COAT)	TON	1.5	1.5		
40800050	INCIDENTAL HOT-MIX ASPHALT SURFACING	TON	68.3	68.3		
44000153	HOT-MIX ASPHALT SURFACE REMOVAL, 1"	SQ YD	88353	88353		
44200994	CLASS B PATCHES, TYPE II, 12 INCH	SQ YD	341	341		
44213200	SAW CUTS	FOOT	2023	2023		
44300200	STRIP REFLECTIVE CRACK CONTROL TREATMENT	FOOT	60466	60466		
48101200	AGGREGATE SHOULDERS, TYPE B	TON	5460	5460		
48203100	HOT-MIX ASPHALT SHOULDERS	TON	1699	1699		
*63100167	TRAFFIC BARRIER TERMINAL TYPE 1, SPECIAL (TANGENT)	EACH	3	3		
63200310	GUARDRAIL REMOVAL	FOOT	75	75		
67000400	ENGINEER'S FIELD OFFICE, TYPE A	CAL MO	10	10		
67100100	MOBILIZATION	L SUM	1	1		
70100450	TRAFFIC CONTROL AND PROTECTION, STANDARD 701201	L SUM	1	1		
70100460	TRAFFIC CONTROL AND PROTECTION, STANDARD 701306	L SUM	1	1		

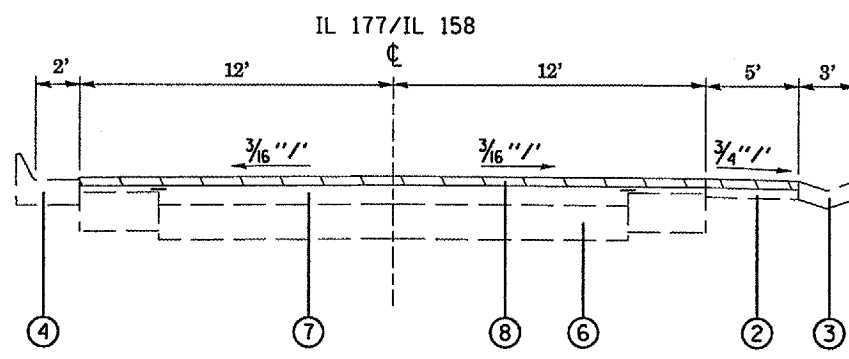
SUMMARY OF QUANTITIES			TOTAL QUANTITIES	CONSTRUCTION TYPE CODE		
CODE NO	ITEM	UNIT		1000-2A 100% STATE		
70100600	TRAFFIC CONTROL AND PROTECTION, STANDARD 701336	L SUM	1	1		
70300100	SHORT-TERM PAVEMENT MARKING	FOOT	19404	19404		
70300210	TEMPORARY PAVEMENT MARKING - LETTERS AND SYMBOLS	SQ FT	296	296		
70300220	TEMPORARY PAVEMENT MARKING - LINE 4"	FOOT	71148	71148		
70300260	TEMPORARY PAVEMENT MARKING - LINE 12"	FOOT	856	856		
70300280	TEMPORARY PAVEMENT MARKING - LINE 24"	FOOT	92	92		
70301000	WORK ZONE PAVEMENT MARKING REMOVAL	SQ FT	6468	6468		
*78000100	THERMOPLASTIC PAVEMENT MARKING - LETTERS AND SYMBOLS	SQ FT	296	296		
*78000200	THERMOPLASTIC PAVEMENT MARKING - LINE 4"	FOOT	71148	71148		
*78000600	THERMOPLASTIC PAVEMENT MARKING - LINE 12"	FOOT	856	856		
*78000650	THERMOPLASTIC PAVEMENT MARKING - LINE 24"	FOOT	92	92		
*78100100	RAISED REFLECTIVE PAVEMENT MARKER	EACH	510	510		
*78200410	GUARDRAIL MARKERS, TYPE A	EACH	12	12		
*78201000	TERMINAL MARKER - DIRECT APPLIED	EACH	3	3		
78300200	RAISED REFLECTIVE PAVEMENT MARKER REMOVAL	EACH	510	510		
*80300100	LOCATING UNDERGROUND CABLE	FOOT	50	50		
*88600600	DETECTOR LOOP REPLACEMENT	FOOT	144	144		
Z0017202	DOWEL BARS 1 1/2"	EACH	816	816		

*SPECIALTY ITEMS

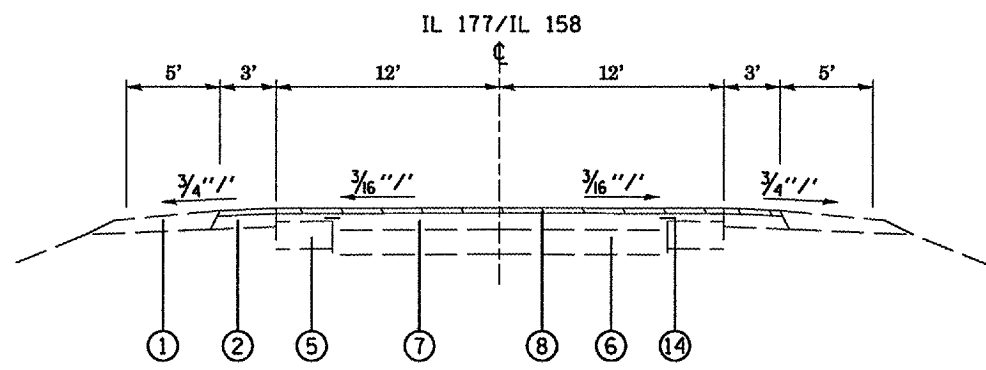
F.A. RTE.	SECTION	COUNTY	TOTAL SHEETS	SHEET NO.
:	:	MADISON	7	4
STA. TO STA.				
FED. ROAD DIST. NO. ILLINOIS FED. AID PROJECT				
: EAU. 9251 / FAS. 1848 / FAU. 9288				
: 2TR5-2, 28, 29RS-2				



EXISTING TYPICAL SECTION
STA. 100+70 TO STA. 120+50

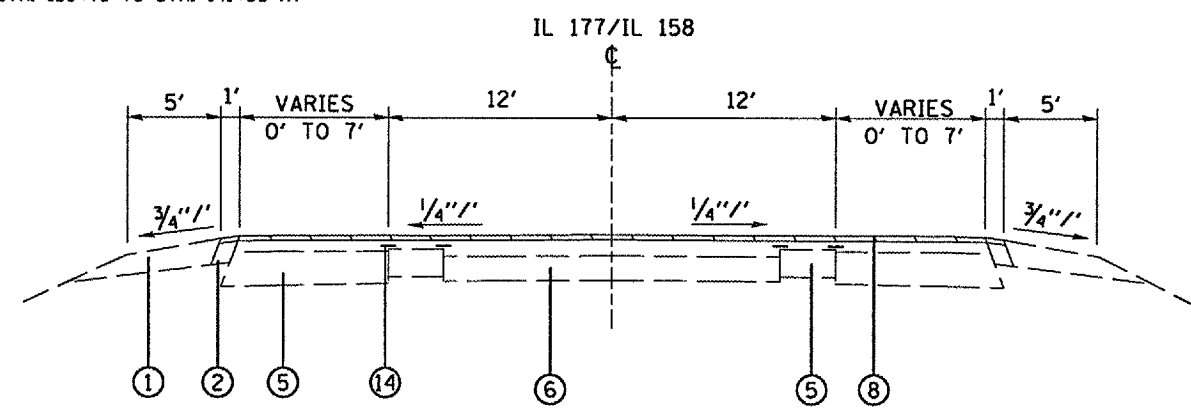


EXISTING TYPICAL SECTION
STA. 130+79 TO STA. 141+00 RT



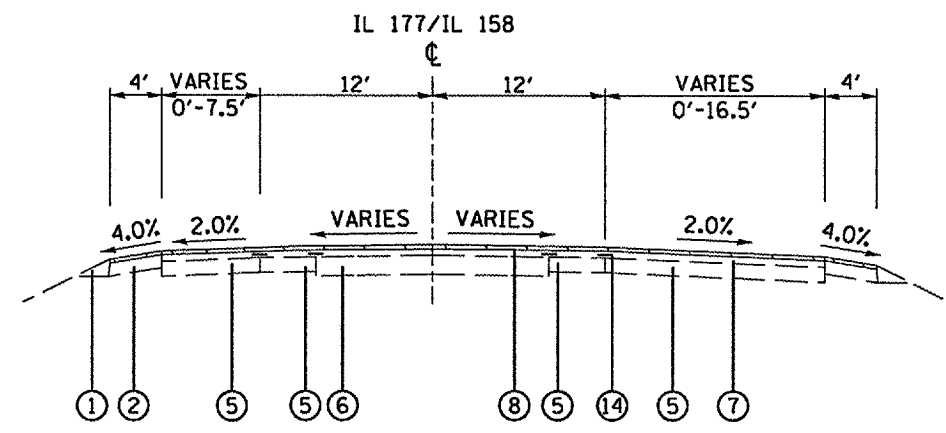
EXISTING TYPICAL SECTION

STA. 125+80 TO STA. 130+79
STA. 143+00 TO STA. 148+54
STA. 148+95 TO STA. 157+80
STA. 173+65 TO STA. 175+00
STA. 185+00 TO STA. 213+35
STA. 253+41 TO STA. 265+75
STA. 277+82 TO STA. 355+83
STA. 356+54 TO STA. 394+40



EXISTING TYPICAL SECTION

STA. 213+35 TO STA. 224+80
STA. 228+22 TO STA. 243+46



EXISTING TYPICAL SECTION

STA. 265+75 TO STA. 277+82

LEGEND

- ① EXISTING AGGREGATE SHOULDER
- ② EXISTING HMA SHOULDER
- ③ EXISTING TYPE "A" GUTTER
- ④ EXISTING CURB & GUTTER TYPE B-6.24
- ⑤ EXISTING BASE COURSE WIDENING, 9"
- ⑥ EXISTING PORTLAND CEMENT CONCRETE PAVEMENT 7" TO 9" THICK
- ⑦ EXISTING HMA RESURFACING
- ⑧ PROPOSED HMA SURFACE REMOVAL, 1"
- ⑨ PROPOSED HMA LEVEL BINDER, 3/4 "
- ⑩ PROPOSED HMA SURFACE COURSE, 1 1/2 "
- ⑪ PROPOSED AGGREGATE & BITUMINOUS MATERIALS (PRIME COAT)
- ⑫ PROPOSED HMA SHOULDERS 2 1/4"
- ⑬ PROPOSED AGGREGATE SHOULDER, TYPE B
- ⑭ PROPOSED STRIP REFLECTIVE CRACK CONTROL

REVISIONS	
NAME	DATE

ILLINOIS DEPARTMENT OF TRANSPORTATION
EXISTING TYPICAL SECTIONS

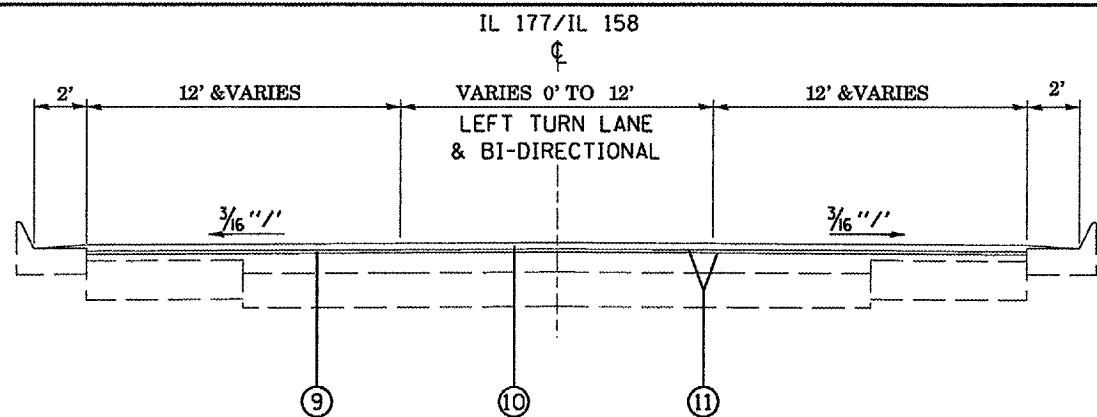
FAU 9251 / FAS 1848 / FAU 9288
SECTION 2TR5-2, 28, 29RS-2
ST. CLAIR COUNTY

SCALE: VERT. _____
HORIZ. _____

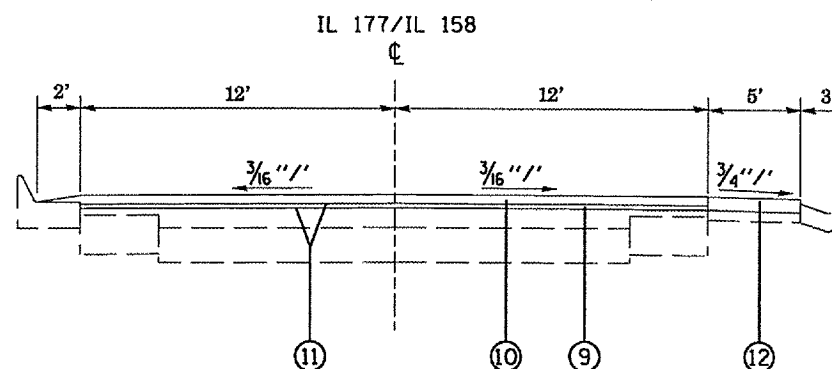
DATE _____ DRAWN BY _____
CHECKED BY _____

PLOT DATE: _____
SCALE: _____
REFERENCE: _____

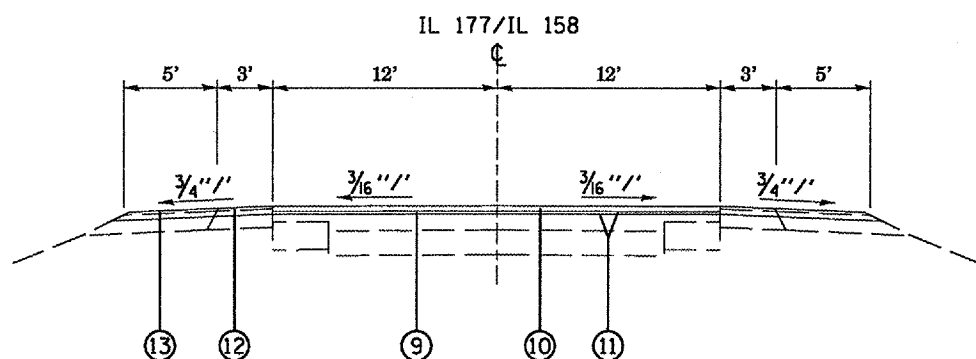
F.A. RTE.	SECTION	COUNTY	TOTAL SHEETS	SHEET NO.
2	2	MADISON	7	5
STA. TO STA.				
FED. ROAD DIST. NO. ILLINOIS FED. AID PROJECT				
E&U 9251 / FAS 1848 / FAU 9288				
27RS-2, 28, 29RS-2				



EXISTING TYPICAL SECTION
STA. 100+70 TO STA. 120+50

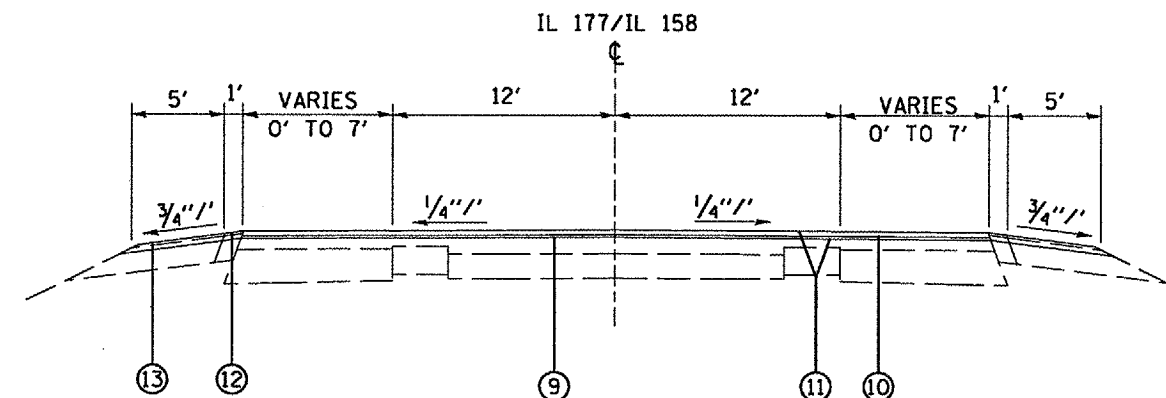


EXISTING TYPICAL SECTION
STA. 130+79 TO STA. 141+00 RT



EXISTING TYPICAL SECTION

- STA. 125+80 TO STA. 130+79
- STA. 143+00 TO STA. 148+54
- STA. 148+95 TO STA. 157+80
- STA. 173+65 TO STA. 175+00
- STA. 185+00 TO STA. 213+35
- STA. 253+41 TO STA. 265+75
- STA. 277+82 TO STA. 355+83
- STA. 356+54 TO STA. 394+40

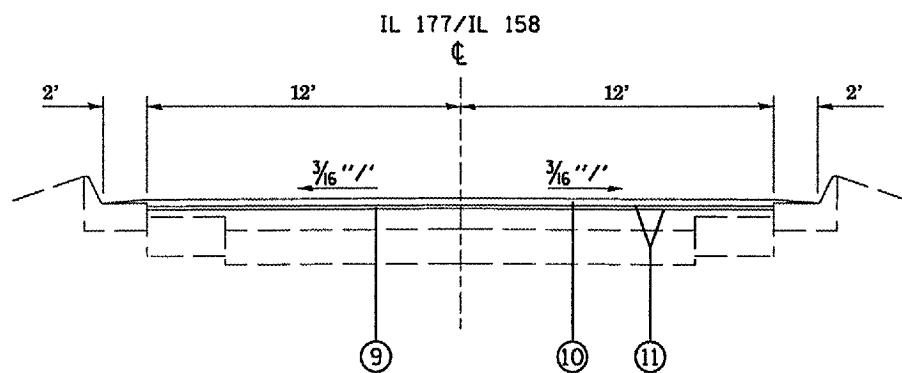


EXISTING TYPICAL SECTION

STA. 213+35 TO STA. 224+80
STA. 228+22 TO STA. 243+46

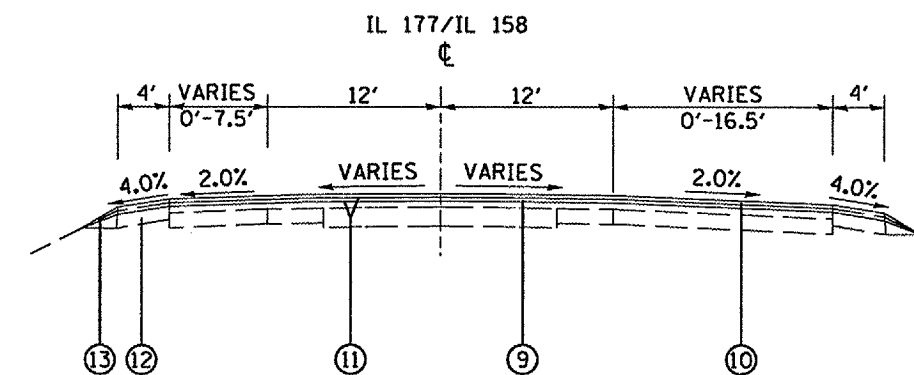
LEGEND

- ① EXISTING AGGREGATE SHOULDER
- ② EXISTING HMA SHOULDER
- ③ EXISTING TYPE "A" GUTTER
- ④ EXISTING CURB & GUTTER TYPE B-6.24
- ⑤ EXISTING BASE COURSE WIDENING, 9"
- ⑥ EXISTING PORTLAND CEMENT CONCRETE PAVEMENT 7" TO 9" THICK
- ⑦ EXISTING HMA RESURFACING
- ⑧ PROPOSED HMA SURFACE REMOVAL, 1"
- ⑨ PROPOSED HMA LEVEL BINDER, 3/4"
- ⑩ PROPOSED HMA SURFACE COURSE, 1 1/2"
- ⑪ PROPOSED AGGREGATE & BITUMINOUS MATERIALS (PRIME COAT)
- ⑫ PROPOSED HMA SHOULDERS 2 1/4"
- ⑬ PROPOSED AGGREGATE SHOULDER, TYPE B
- ⑭ PROPOSED STRIP REFLECTIVE CRACK CONTROL



EXISTING TYPICAL SECTION

STA. 120+50 TO STA. 125+80
STA. 130+79 TO STA. 141+00LT
STA. 141+00 TO STA. 143+00



EXISTING TYPICAL SECTION

STA. 265+75 TO STA. 277+82

REVISIONS	
NAME	DATE

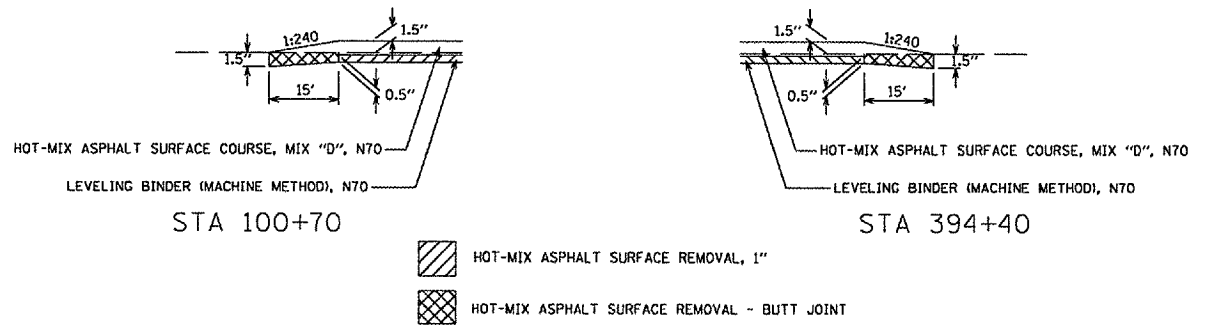
ILLINOIS DEPARTMENT OF TRANSPORTATION
PROPOSED TYPICAL SECTIONS

FAU 9251 / FAS 1848 / FAU 9288
SECTION 27RS-2, 28, 29RS-2
ST. CLAIR COUNTY

SCALE: VERT. _____
HORIZ. _____
DATE _____ DRAWN BY _____
CHECKED BY _____

F.A. RTE.	SECTION	COUNTY	TOTAL SHEETS	SHEET NO.
=	=	MADISON	7	6
STA. _____ TO STA. _____				
FED. ROAD DIST. NO. _____ (ILLINOIS) FED. AID PROJECT				
= E&U 9251 / F&S 1848 / FAU 9288				
= 27RS-2, 28, 29RS-2				

LOCATION		THERMOPLASTIC PAVEMENT MARKING				RAISED REFLECTIVE PAVEMENT MARKERS	RAISED REFLECTIVE PAVEMENT MARKER REMOVAL	SHORT - TERM PAVEMENT MARKING	WORK ZONE PAVEMENT MARKING REMOVAL
STATION	TO STATION	4" LINE	12" LINE	24" LINE	LETTERS & SYMBOLS	EACH	EACH	FOOT	SO FT
100+70	TO 103+20					3	3	136	45
103+20	TO 106+20					15	15	327	109
106+20	TO 107+20			22	31	3	3	82	27
108+33	TO 109+33					3	3	82	27
109+33	TO 110+33					3	3	136	45
110+33	TO 111+50		97			6	6	134	45
112+24	TO 117+30					26	26	348	116
117+30	TO 119+11		80		94	9	9	197	66
119+11	TO 124+90					15	15	316	105
124+90	TO 125+80					1	1	6	2
125+80	TO 130+79					6	6	306	102
130+79	TO 143+00					16	16	416	139
143+00	TO 148+54					7	7	340	113
OMISSION - SN 082-0056									
148+95	TO 154+52					7	7	342	114
154+52	TO 157+80			48					
154+52	TO 157+80					5	5	201	67
OMISSION @ FOX VALLEY ESTATES									
173+65	TO 175+00					2	2	83	28
OMISSION @ PREMIER DR.									
185+00	TO 215+47					39	39	1870	623
215+47	TO 216+52					3	3	115	38
216+52	TO 222+50		171			30	30	979	326
222+50	TO 224+80				31	18	18	299	100
OMISSION @ GREENMOUNT RD.									
228+22	TO 230+44					17	17	290	97
230+44	TO 236+78		162			32	32	1037	346
236+78	TO 237+50					2	2	79	26
237+50	TO 243+16					7	7	617	206
OMISSION - SN 082-0057									
253+41	TO 258+60					7	7	460	153
258+60	TO 265+76					9	9	439	146
265+76	TO 267+98					6	6	242	81
267+98	TO 271+45			111		26	26	643	214
271+45	TO 273+02				47	12	12	203	68
273+02	TO 277+82		125		31	24	24	785	262
277+82	TO 281+45					5	5	223	74
281+45	TO 287+90					8	8	572	191
287+90	TO 316+00					35	35	1724	575
316+00	TO 333+00					22	22	1507	502
333+00	TO 355+83					29	29	1401	467
OMISSION - SN 082-0058									
356+53	TO 391+45					44	44	2143	714
391+45	TO 394+40					8	8	322	107
TOTALS		71148	856	92	296	510	510	19404	6468



PATCHING SCHEDULE				
LOCATION	SAWCUTS	TIE BARS	CLASS B PATCHES, TYPE 11, 12 INCH	
STA	OFFSET	FT	EACH	SO YD
138+98	LT	48	20	8
147+62	RT	48	20	8
147+84	LT	48	20	8
150+27	LT	48	20	8
212+51	LT	48	20	8
212+76	LT	48	20	8
221+45	LT	57	20	10
233+99	LT	66	20	12
236+20	LT	44	20	5.3
254+79	LT	48	20	8
267+32	LT	48	20	8
277+76	LT	52	20	10.7
120+16	LT	48	20	8
310+91	LT	48	20	8
325+39	LT	48	20	8
391+05	LT	48	20	8
394+10	LT	48	20	8
394+83	LT	48	20	8
SUBTOTAL		1686	680	284
20% ANTICIPATED		337	136	57
TOTAL		2023	816	341

GUARDRAIL SCHEDULE					
LOCATION	FURNISHED EXCAVATION	TRAFFIC BARRIER TERMINAL TYPE 1, SPECIAL (TANGENT)	GUARDRAIL REMOVAL	GUARDRAIL MARKERS, TYPE A	TERMINAL MARKER - DIRECT APPLIED
	CU YD	EACH	FEET	EACH	EACH
SN 082-0056					
NE QUADRANT		1	12.5	4	1
NW QUADRANT	7	1	50	4	1
SW QUADRANT		1	12.5	4	1
TOTALS		7	75	12	3

PAVING SCHEDULE									
LOCATION	BITUMINOUS MATERIALS (PRIME COAT)	AGGREGATE (PRIME COAT)	LEVELING BINDER (MACHINE METHOD), N70	HOT-MIX ASPHALT SURFACE COURSE, MIX "D", N70	HOT-MIX ASPHALT SURFACE REMOVAL, 1"	STRIP REFLECTIVE CRACK CONTROL TREATMENT	AGGREGATE SHOULDERS, TYPE B	HOT-MIX ASPHALT SHOULDERS	
	TON	TON	TON	TON	SO YD	FOOT	TON	TON	
100+70 TO 120+50	5.9	28.5	399.0	798.0	9499.7	3960.0			
120+50 TO 125+80	0.9	4.2	59.3	118.7	1412.7	1060.0			
125+80 TO 130+79	0.8	4.0	55.9	111.8	1663.3	998.0	123.2	41.9	
130+79 TO 141+00	0.8	4.0	56.5	113.1	1346.0	2042.0			
141+00 TO 143+00	0.9	4.1	57.2	114.4	2042.4	2042.0	126.0		
143+00 TO 148+54	0.3	1.6	22.4	44.8	533.3	400.0			
148+54 TO 148+95 OMISSION	0.9	4.4	62.1	124.2	1847.7	1108.0	136.8	46.5	
148+95 TO 157+80	1.5	7.0	97.6	195.1	2912.7	1770.0	218.5	74.3	
157+80 TO 173+65 OMISSION									
173+65 TO 175+00	0.2	1.1	15.1	30.2	450.0	270.0	33.3	11.3	
175+00 TO 185+00 OMISSION									
185+00 TO 213+35	4.7	22.6	316.9	633.9	9436.2	5670.0	700.0	238.1	
213+35 TO 224+80	2.6	12.6	176.1	352.1	4446.6	4580.0	282.7	32.1	
224+80 TO 228+22 OMISSION									
228+22 TO 243+46	3.2	15.4	215.9	431.8	5479.6	6096.0	376.3	42.7	
243+46 TO 253+41 OMISSION									
253+41 TO 265+75	2.2	10.7	149.4	298.8	4380.0	2468.0	304.7	103.7	
265+75 TO 277+82	2.0	9.7	135.2	270.3	4291.3	4828.0	298.0	135.2	
277+82 TO 355+83	13.0	62.4	873.5	1747.0	25998.6	15602.0	1926.2	655.3	
355+83 TO 356+54 OMISSION									
356+54 TO 394+40	6.3	30.3	423.7	847.4	12612.6	7572.0	934.8	318.0	
TOTALS		46.4	222.6	3115.8	6231.7	88352.6	60466.0	5460.6	1699.2

FEATHEREDGE AND BUTT JOINT SCHEDULE						
LOCATION	TEMPORARY RAMP	BITUMINOUS MATERIALS (PRIME COAT)	AGGREGATE (PRIME COAT)	INCIDENTAL HOT-MIX ASPHALT SURFACING	HOT-MIX ASPHALT SURFACE REMOVAL - BUTT JOINT	
	SO YD	TON	TON	TON	SO YD	
100+70	BEGIN	13.3			60	
102+86	RT 158 WB	46.3	0.02	0.10		
107+82	RT 177 EB	48.1	0.02	0.11	5.1	
107+82	LT MCCLINTOCK	25.9	0.01	0.06	2.7	
109+70	LT ALLEY	11.1	0.01	0.03	1.2	
110+44	RT MONUMENT DR	25.9	0.01	0.06	2.7	
111+68	LT PATTERSON CT	18.5	0.01	0.04	1.9	
113+03	RT CEMETARY ENT	24.1	0.01	0.06	2.5	
114+33	RT PARK RD	14.8	0.01	0.03	1.6	
120+31	LT FOREST BLVD	29.6	0.01	0.07	3.1	
125+15	RT WABASH AVE	33.3	0.02	0.08	3.5	
125+15	LT WABASH AVE	33.3	0.02	0.08	3.5	
129+89	LT PORTLAND AVE	33.3	0.02	0.08	3.5	
134+48	RT SIDE RD	24.1	0.01	0.05	2.5	
138+24	LT PENN AVE	24.1	0.01	0.05	2.5	
142+83	LT GARDEN AVE	24.1	0.01	0.05	2.5	
152+19	RT GREEN MOUNT LANE	25.9	0.01	0.06	2.7	
154+50	RT SCHOOL ENT	22.2	0.01	0.05	2.3	
226+47	LT GREENMOUNT RD	101.9	0.05	0.23	10.7	
226+47	RT GREENMOUNT RD	83.5	0.04	0.19	8.8	
394+40	END	11.1			50	
TOTALS		674.4	0.3	1.6	68.3	110.0

*FEATHEREDGE - 10' MAXIMUM OR AS DIRECTED BY THE ENGINEER

REVISIONS	
NAME	DATE

ILLINOIS DEPARTMENT OF TRANSPORTATION
SCHEDULES

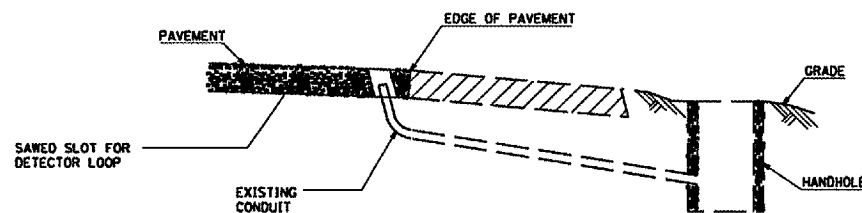
FAU 9251 / FAS 1848 / FAU 9288
SECTION 27RS-2, 28, 29RS-2
ST. CLAIR COUNTY

SCALE: VERT. _____
HORIZ. _____

DATE _____ DRAWN BY _____
CHECKED BY _____

DATE: _____
FILE NAME: _____
REFERENCE: _____

F.A. RTE.	SECTION	COUNTY	TOTAL SHEETS	SHEET NO.
2	2	MADISON	7	7
STA. _____		TO STA. _____		
FED. ROAD DIST. NO. ILLINOIS FED. AID PROJECT				
EAU 9251 / FAS 1848 / FAU 9288				
27RS-2, 28, 29RS-2				



DETAIL

(NO SCALE)
RE-USE EXISTING DETECTOR LOOP LEAD-IN CONDUIT

- 1 DRILL OUT PAVEMENT SEALANT AND CLEAN EXISTING CONDUIT.
- 2 REMOVE EXISTING CABLE TO HANDHOLE.
- 3 INSTALL LOOP LEAD-IN CONDUCTORS IN CONDUIT.
- 4 SPLICE NEW DETECTOR LOOP LEAD-IN CONDUCTORS TO EXISTING LEAD-IN CABLE IN HANDHOLE.
- 5 FILL HOLE WITH APPROVED SEALER, PREVENT SEALER FROM ENTERING INTO CONDUIT.
- 6 LOCATING UNDERGROUND CABLE WILL BE PAID FOR SEPARATELY.

NOT A PAY ITEM. THE COST OF THIS WORK SHALL BE INCLUDED IN THE PAY ITEM "DETECTOR LOOP REPLACEMENT"

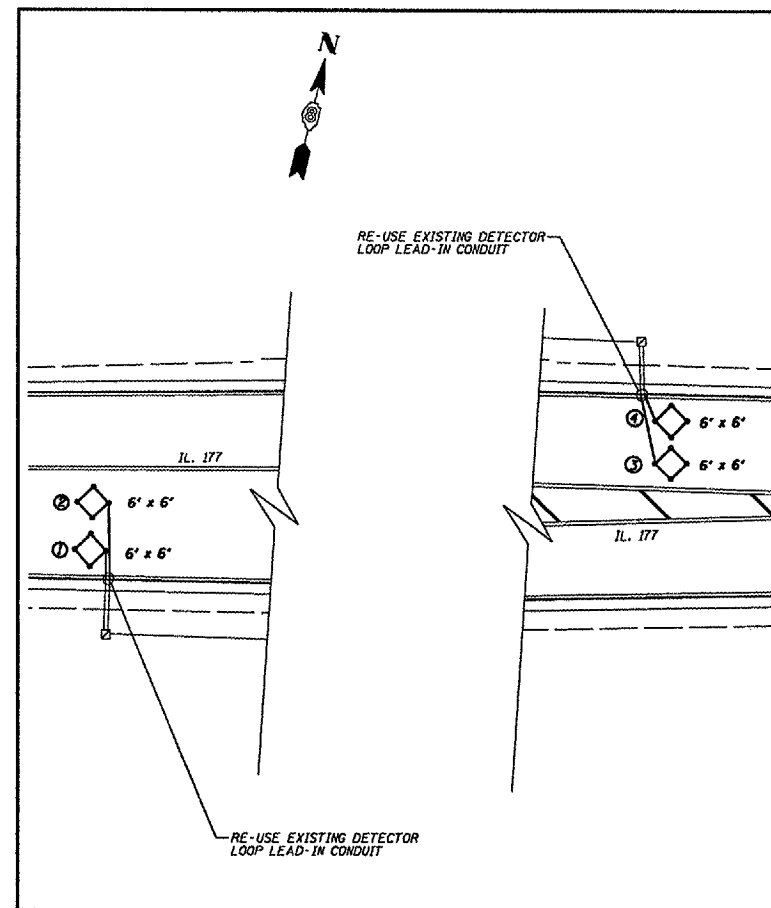
DETECTOR LOOP REQUIREMENTS AND CALCULATIONS FOR IL 177 AND GREEN MOUNT RD.

LOOP	PHASE (Ø)	LOOP SIZE (FT)	REQUIRED # OF TURNS	CALCULATED INDUCTANCE MICROHENRIES (µH)	CALCULATED RESISTANCE OHMS (R)
1. EB CCO	5	6' x 6'	7	536	4.3
2. EB CCO	2	6' x 6'	7	536	4.3
3. WB CCO	1	6' x 6'	6	380	3.2
4. WB CCO	6	6' x 6'	6	380	3.2

THE ABOVE VALUES ARE CALCULATED OF COMBINED LOOP AND LEAD-IN INDUCTANCE AND RESISTANCE. ACTUAL MEASURED VALUES SHOULD BE WITHIN +/- 20% OF THESE VALUES.

SCHEDULE OF QUANTITIES

CODE NO.	DESCRIPTION	QUANTITY
80300100	LOCATING UNDERGROUND CABLE	50
80600600	DETECTOR LOOP REPLACEMENT	144



NOTES:

1. THE EXISTING HANDHOLES AND CONDUITS SHALL BE REUSED. THE CONTRACTOR WILL BE RESPONSIBLE FOR PROTECTING EXISTING CONDUITS STUB-UP DURING CONSTRUCTION. IF THEY HAVE BEEN DAMAGED, SHALL BE REPLACED AT THE COST OF THE CONTRACTOR WITH NO ADDITIONAL COMPENSATION AND TO THE SATISFACTION OF THE ENGINEER.
2. THE TOTAL QUANTITY OF DETECTOR LOOP REPLACEMENT AT THIS INTERSECTION IS 144 FEET. ONLY THE DETECTOR LOOPS WHICH ARE DAMAGED SHALL BE REPLACED; THEREFORE, THE ACTUAL QUANTITY MAY VARY.

REVISIONS		ILLINOIS DEPARTMENT OF TRANSPORTATION DETECTOR LOOP REPLACEMENT FAU 9251 / FAS 1848 / FAU 9288 SECTION 27RS-2, 28, 29RS-2 ST. CLAIR COUNTY
NAME	DATE	
SCALE: VERT.	DATE	DRAWN BY
SCALE: HORIZ.		CHECKED BY

PLOT DATE : STATES
PLOT SCALE : METERS
PLOT SCALE : METERS
REFERENCE : SHEETS