

F.A. RTE.	SECTION	COUNTY	TOTAL SHEETS	SHEET NO.
FAI 64	95-(5,6)I	WASHINGTON	11	1

+1
12

D-98-011-07

FOR INDEX OF SHEETS, SEE SHEET NO. 2

STATE OF ILLINOIS
DEPARTMENT OF TRANSPORTATION
DIVISION OF HIGHWAYS

**PROPOSED
HIGHWAY PLANS**

FAI ROUTE 64
SECTION 95-(5,6)I

WASHINGTON COUNTY

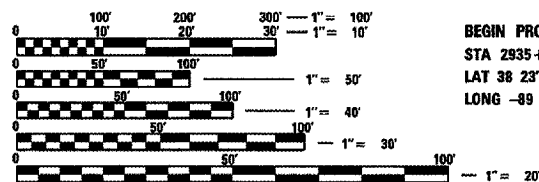
C-98-010-07

PAVEMENT PATCHING

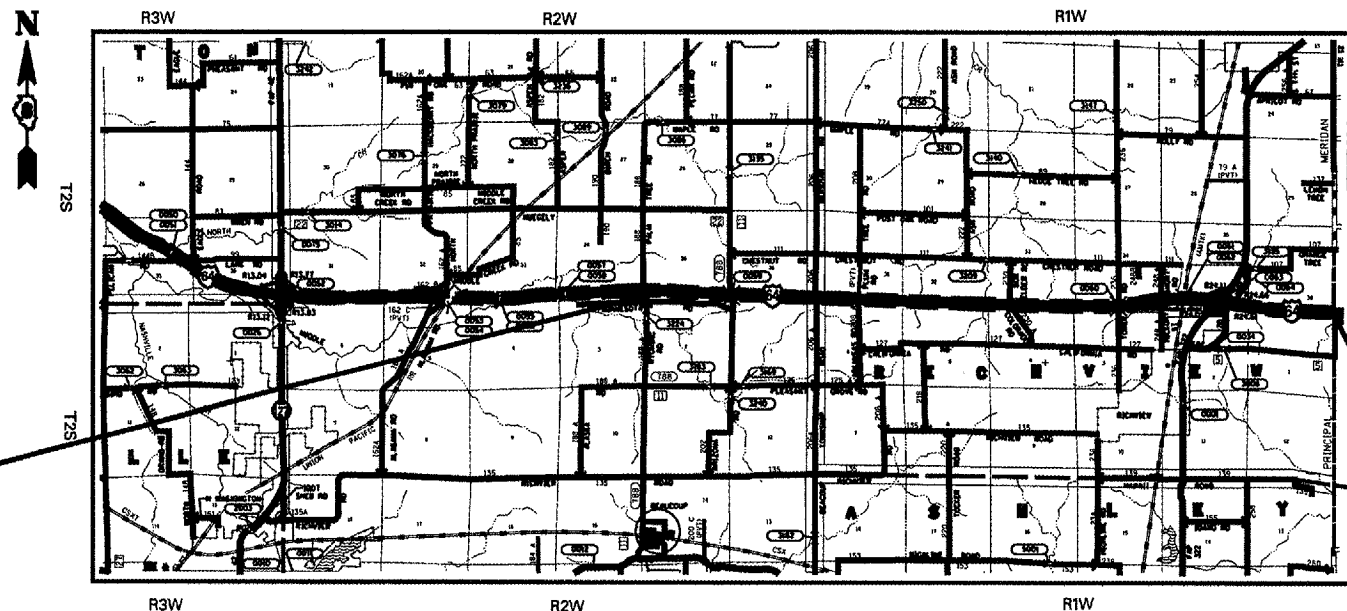


LOCATION OF SECTION INDICATED THIS: --

MICROFILMED _____
REEL NUMBER _____
AWARDED _____
RESIDENT ENGINEER _____
AS BUILT CHANGES WERE MADE
ON THE FOLLOWING SHEETS



BEGIN PROJECT
STA 2935+25.00
LAT 38 23'29"N
LONG -89 17'37"W



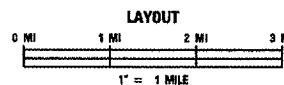
END PROJECT
STA 3355+51.88
LAT 38 23'14"N
LONG -89 08'44"W

FULL SIZE PLANS HAVE BEEN PREPARED USING STANDARD
ENGINEERING SCALES. REDUCED SIZED PLANS WILL NOT
CONFORM TO STANDARD SCALES. IN MAKING MEASUREMENTS
ON REDUCED PLANS, THE ABOVE SCALES MAY BE USED.

J.U.L.I.E.
JOINT UTILITY LOCATION INFORMATION FOR EXCAVATION
1-800-892-0123

CONTRACT NO. 76A38

DESIGN DESIGNATION
2005 ADT = 19300 (ACTUAL)
2007 ADT = 19700 (ESTIMATED)
2027 ADT = 24000 (ESTIMATED)
S.U. = 5.0% M.U. = 32.6%



PROJECT LENGTH
GROSS LENGTH 42026.88 7.960 MILES
NET LENGTH 42026.88 7.960 MILES

STATE OF ILLINOIS
DEPARTMENT OF TRANSPORTATION
DIVISION OF HIGHWAYS
SUBMITTED *May 16, 2007*
May C. Romie
DEPUTY DIRECTOR OF HIGHWAYS
REGION FIVE ENGINEER
June 29, 2007
Eric E. Harms
ENGINEER OF DESIGN AND ENVIRONMENT
June 29, 2007
Melton R. Sees, P.E.
DIRECTOR, DIVISION OF HIGHWAYS

**PRINTED BY THE AUTHORITY
OF THE STATE OF ILLINOIS**

PROJECT ENGINEER: PATTI LeBEAU Phone: (618) 346-3179
SQUAD LEADER: CHERYL KEPLAR Phone: (618) 346-3186