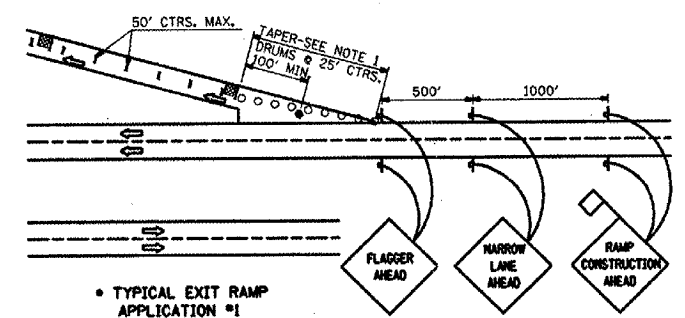
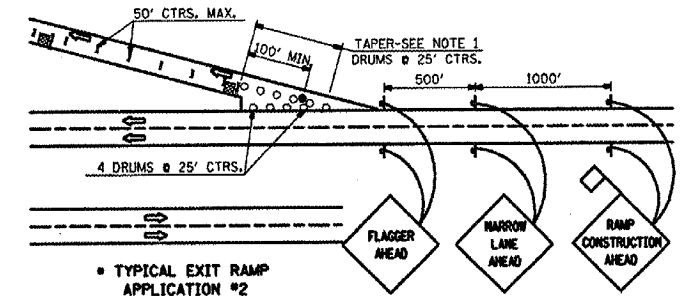


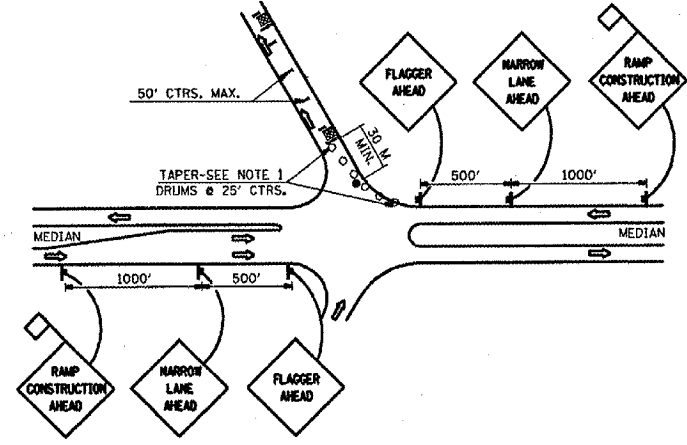
| | | | | |
|---------------------|---------|---------------------------|--------------|-----------|
| F.A.I. RTE. | SECTION | COUNTY | TOTAL SHEETS | SHEET NO. |
| 64 | 95-61 | WASHINGTON | 11 | 11A |
| STA. | | TO STA. | | |
| FED. ROAD DIST. NO. | | ILLINOIS FED. AID PROJECT | | |



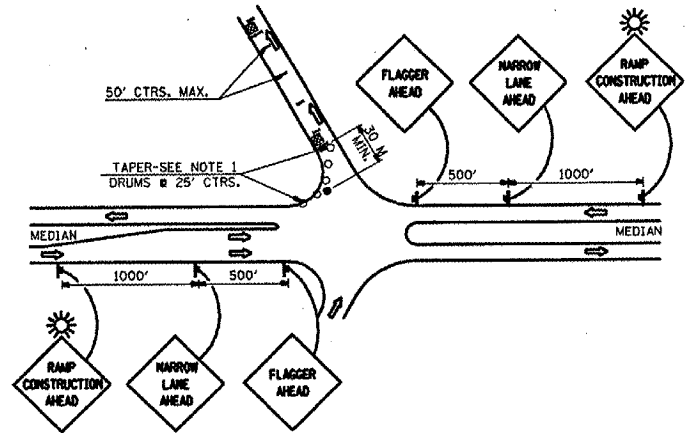
TYPICAL EXIT RAMP APPLICATION #1



TYPICAL EXIT RAMP APPLICATION #2



TYPICAL ENTRANCE RAMP APPLICATION #3



TYPICAL ENTRANCE RAMP APPLICATION #4

GENERAL NOTES FOR RAMP SPECIAL

- FOR EXIT RAMP THE TAPER SHALL BEGIN AS SHOWN AND EXTEND TO THE LOCATION OF THE FIRST PATCH. FOR ENTRANCE RAMP, THE TAPER SHALL BEGIN AT THE EDGE OF PAVEMENT AND EXTEND TO THE LOCATION OF THE FIRST PATCH FOR ENTRANCE RAMP.
- AN OPERATION SHALL CONSIST OF ONE INDIVIDUAL RAMP, 1/2 AT A TIME.
- A FLAGGER SHALL BE REQUIRED AT ALL TIMES WHEN MEN OR EQUIPMENT ARE PRESENT AT EACH OPERATION.
- WHEN NO WORK IS BEING PERFORMED, THE FLAGGERS WILL NOT BE REQUIRED. IF THE FLAGGERS ARE NOT PRESENT, THE FLAGGER SIGNS SHALL BE REMOVED OR COVERED.
- BARRICADES OR DRUMS SHALL BE PLACED ALONG THE CENTER LINE OF THE RAMP. THE CHANNELIZING DEVICES SHALL BE PLACED AT EACH OPEN HOLE ON THE APPROACH SIDE OF THE OPEN HOLE.
- TWO ADDITIONAL CHANNELIZING DEVICES SHALL BE PLACED AT EACH OPEN HOLE ON THE APPROACH SIDE OF THE OPEN HOLE.
- LIGHTS WILL NOT BE REQUIRED FOR DAY OPERATIONS.
- ALL SIGNS SHALL BE POST MOUNTED IF THE CLOSURE TIME EXCEEDS FOUR DAYS.
- LATERAL PLACEMENT OF THE FLAGGER MAY BE VARIED FROM THAT SHOWN.
- LIGHTS SHALL BE INSTALLED PER ARTICLE 701.16 OR AS DIRECTED BY ENGINEER. NO ADDITIONAL COMPENSATION ALLOWED.

- PATCH
- FLAGGER WITH TRAFFIC CONTROL SIGN
- BARRICADE OR DRUM
- PERMANENT SUPPORT

| REVISIONS | |
|-----------|------|
| NAME | DATE |
| | |
| | |
| | |
| | |
| | |
| | |
| | |
| | |
| | |
| | |

ILLINOIS DEPARTMENT OF TRANSPORTATION
TRAFFIC CONTROL AND PROTECTION (SPECIAL)
 FAI ROUTE 64
 SECTION 95-(5,6)X
 WASHINGTON COUNTY
 SCALE: VERT. _____
 DATE _____ DRAWN BY _____
 CHECKED BY _____

PLOT DATE: 5/27/2007
 FILE NAME: I:\PROJECTS\75A38\TRAFFIC\TRAFFIC CONTROL\TRAFFIC CONTROL (SPECIAL).DWG
 PLOT SCALE: 1/8" = 1'-0"
 PLOT REFERENCE: 75A38