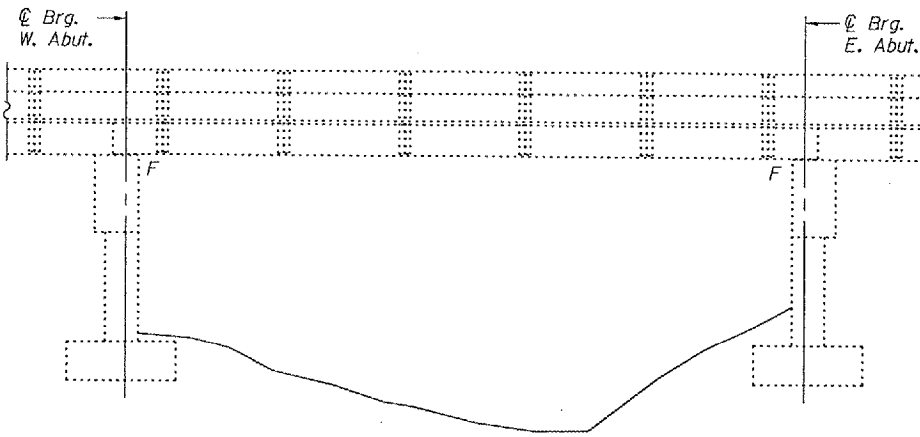


STATE OF ILLINOIS
DEPARTMENT OF TRANSPORTATION

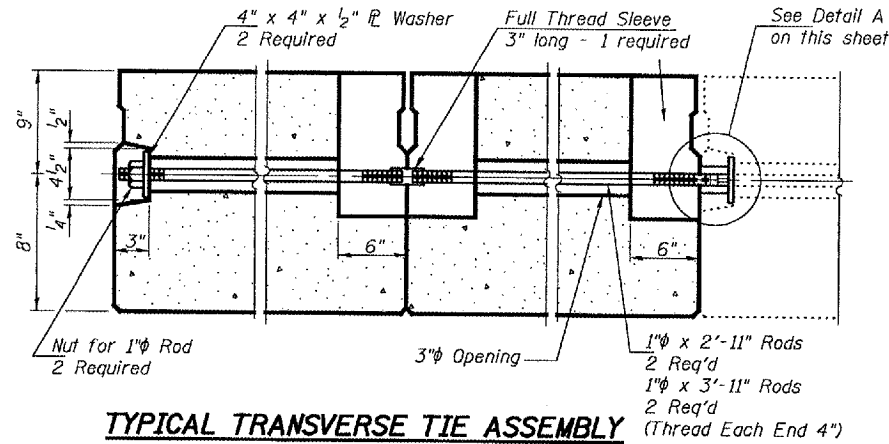
ROUTE NO.	SECTION	COUNTY	TOTAL SHEETS	SHEET NO.
		Hardin	H	5
ILLINOIS FED. AID PROJECT				
Contract Number: 18011				

SHEET NO. 1
3 SHEETS



ELEVATION

6" x 6" x 11 1/2" Blackout to be filled with Class BS Concrete after Beams have been installed. Cost shall be included in the cost of "PPC Deck Beams". Omit on outside face of fascia beams.



TYPICAL TRANSVERSE TIE ASSEMBLY

GENERAL NOTES

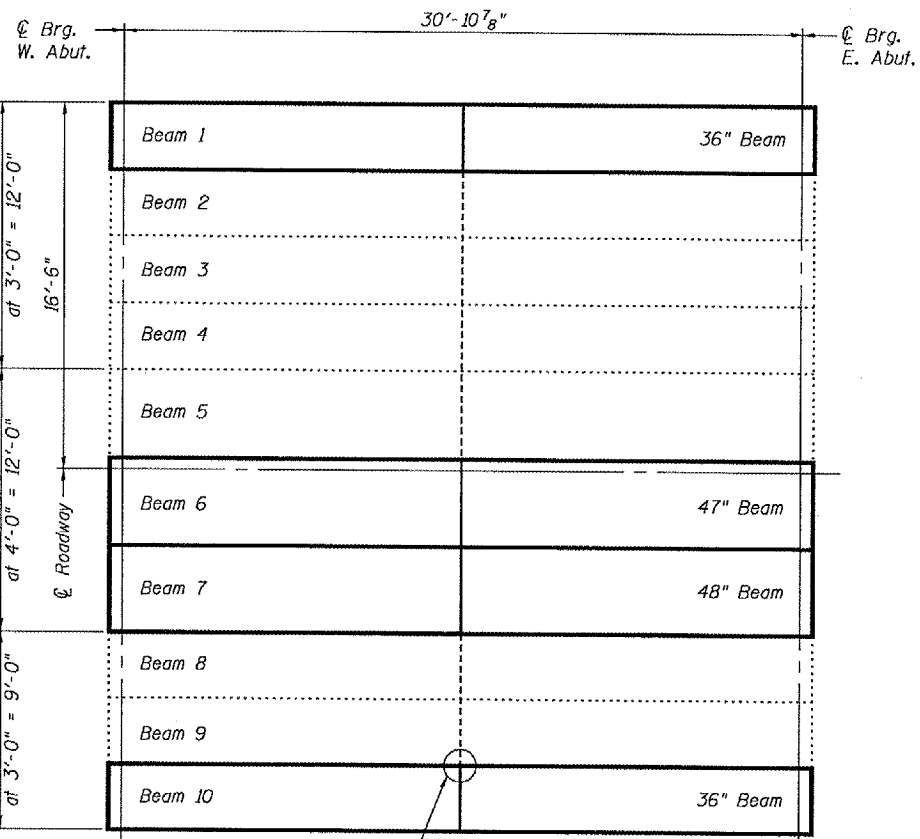
The cut strands at each beam end shall be given two coats of zinc dust spray or paint meeting the requirements of ASTM A780. The zinc dust spray or paint shall be applied before corrosion appears and allowed to dry according to manufacturer's specifications prior to another coat of zinc. A concrete sealer meeting the requirements of Section 587 of the Standard Specifications shall be applied to the exterior face and 9" in on the underside of each fascia beam. The sealer shall be applied after visible crack growth has subsided. This work shall be performed by the producer and included with the cost of the beam.

The top surface of the beams shall be finished according to the IDOT Manual for Fabrication of Precast Prestressed Concrete Products.

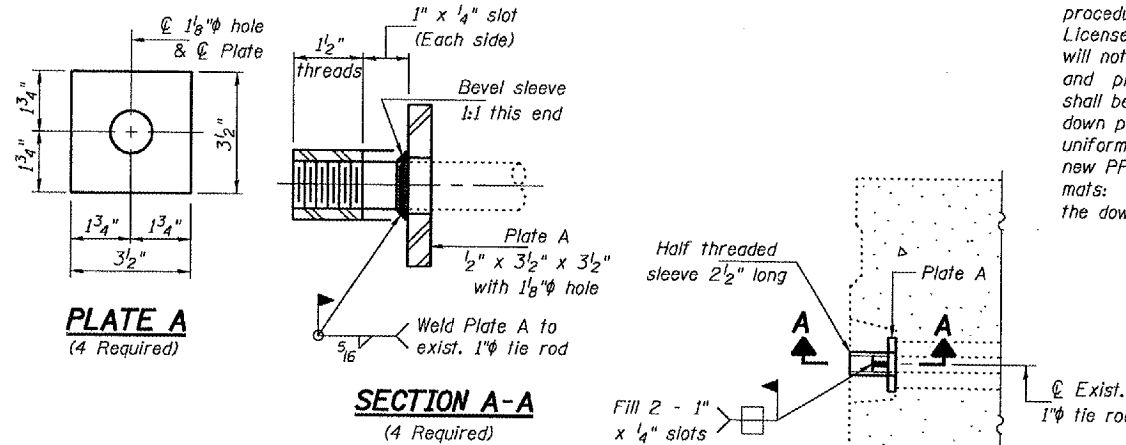
Any damage done to the bridge during beam removal shall be repaired by the Contractor. Cost to be included in the cost of Removal of Existing PPC Deck Beams.

The contractor is advised that the existing PPC Deck Beams are in a deteriorated condition with reduced load carrying capacity. It is the contractor's responsibility to account for the condition of the beams when developing construction procedures.

If the contractor's procedure for existing beam removal or placement of new beams involves placement of cranes or other heavy equipment on the bridge, a detailed procedure shall be submitted to the Engineer for approval. The procedure shall include calculations, prepared and sealed by an Illinois Licensed Structural Engineer, verifying that the equipment and procedure used will not overstress the new or existing beams. To distribute load to multiple beams and protect the existing surface, in all cases a double layer mat of heavy timbers shall be used at all times under crane tracks or wheels and any outriggers in the down position. If necessary, shims shall be used under the crane mat to ensure uniform contact with the underlying beams. If heavy equipment will be placed on new PPC deck beams, the following shall be done prior to placement of the timber mats: placement and tightening of transverse tie assemblies, grouting and curing the dowel rods 24 hours minimum and grouting and curing the shear keys.

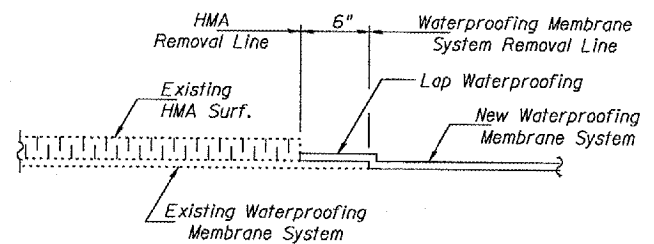


PLAN

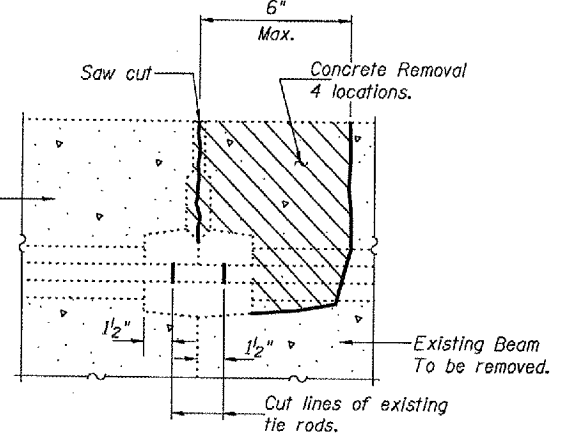


SECTION A-A (4 Required)

DETAIL A



WATERPROOFING TREATMENT



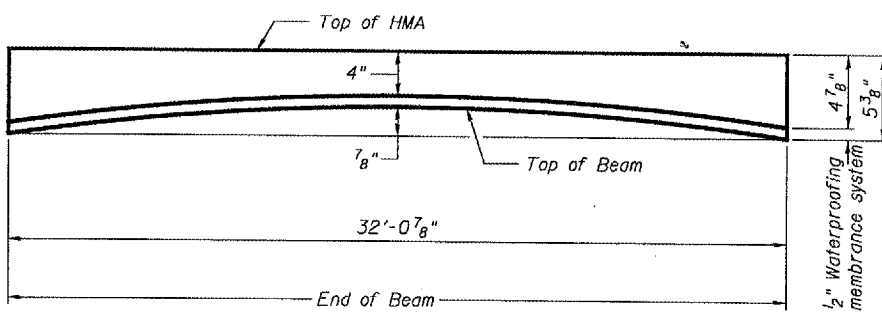
BEAM REMOVAL DETAIL AT TRANSVERSE TIES

**DESIGN STRESSES
PRECAST UNITS**

f'c = 5,000 psi
f'ci = 4,000 psi
f's = 270,000 psi (1/2" φ low lax strands)
f'si = 201,960 psi (1/2" φ low lax strands)

TOTAL BILL OF MATERIAL

ITEM	UNIT	QUANTITY
Removal of Existing PPC Deck Beams	Sq. Ft.	449
PPC Deck Beams (17" Depth)	Sq. Ft.	446
HMA Surface Removal	Sq. Yd.	8.9
HMA Surface Course, Mix "C", N90	Tons	14.7
Waterproofing Membrane System	Sq. Yd.	59
PC Mortar Fairing Course	Foot	160
Removing and Re-erecting Existing Railing	Foot	128



ANTICIPATED INITIAL CAMBER DIAGRAM

**PLAN AND ELEVATION
F.A. RT. 885 IL RT 34
HARDIN COUNTY
SN 035-0009**

DESIGNED: *Adrian T. Holloway*
CHECKED: *Victor H. Veliz*
DRAWN: *[Signature]*
CHECKED: *A.T.H.*

June 15, 2007
EXAMINED: *[Signature]*
PASSED: *Ralph E. Anderson*
REPAIR PLANS UNIT CHIEF
ENGINEER OF BRIDGES AND STRUCTURES



Expires: November 30, 2008