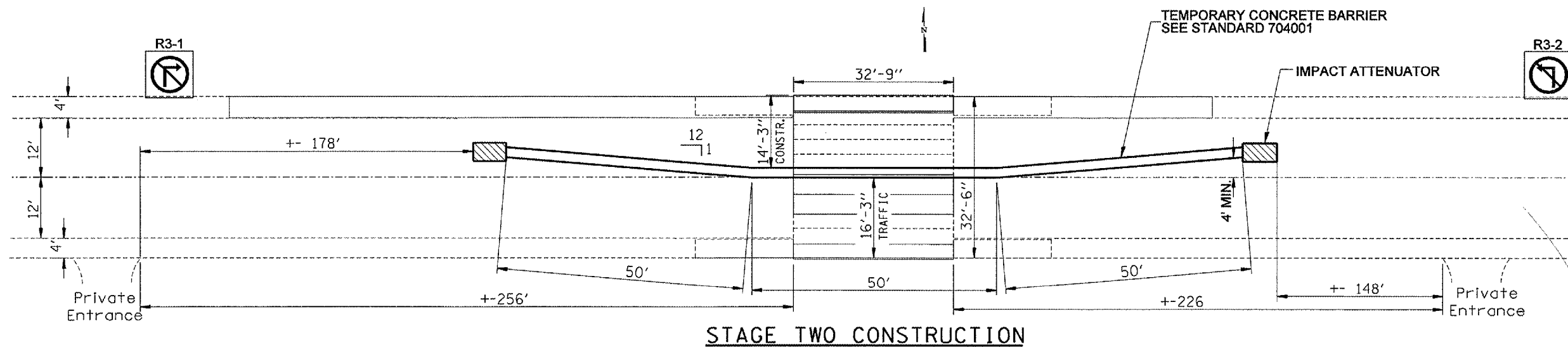
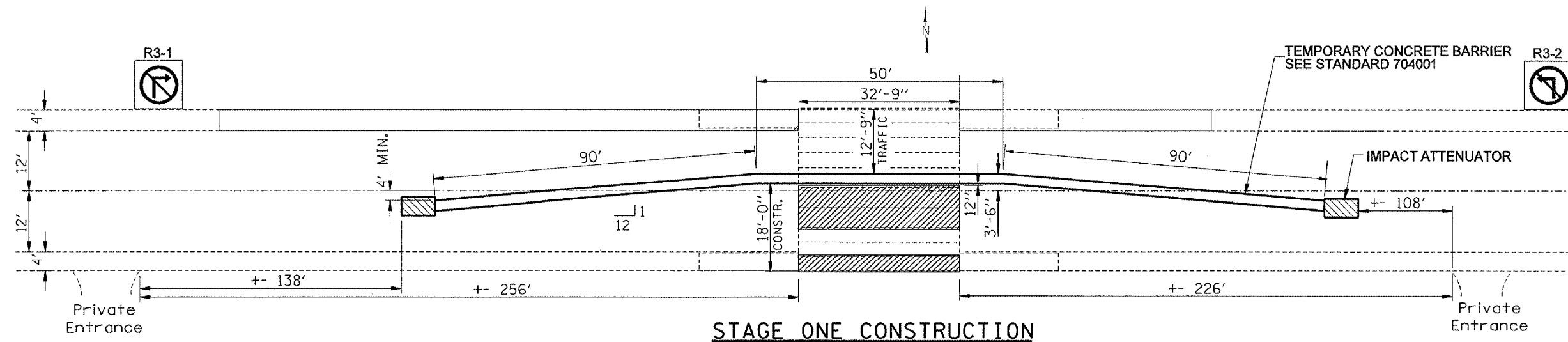
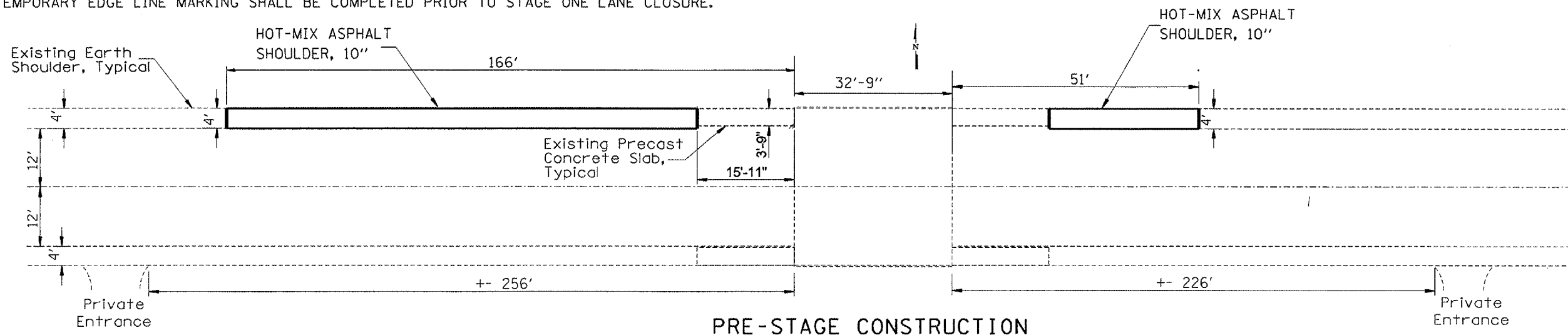


SEE TRAFFIC CONTROL AND PROTECTION STANDARD 701321 FOR DETAILS NOT SHOWN.

STATE OF ILLINOIS
DEPARTMENT OF TRANSPORTATION

CONSTRUCTION OF HOT-MIX ASPHALT SHOULDERS, PAVEMENT MARKING REMOVAL AND
TEMPORARY EDGE LINE MARKING SHALL BE COMPLETED PRIOR TO STAGE ONE LANE CLOSURE.

CONTRACT NO. 78011				
ROUTE NO.	SECTION	COUNTY	TOTAL SHEETS	SHEET NO.
FA 885	51-1	HARDIN	11	8
FED. ROAD DIST. NO. 7		ILLINOIS	FED. AID PROJECT	



WEIGHT LIMIT
10 TONS AXLE
40 TONS GROSS
LOAD LIMIT SIGN
R12-4