

F.A. RTE.	SECTION	COUNTY	TOTAL SHEETS	SHEET NO.
361	06-00214-06-BR	KANE	55	6
STA.		TO STA.		
FED. ROAD DIST. NO.		ILLINOIS FED. AID PROJECT		
CONTRACT NO. 83923				

NO.	DESCRIPTION	ELEV.	APPROX. STA./OS
BM 11	"BENCH TIE" (YELLOW) SET IN SOUTH FACE OF 12" TREE, 33' +/- NORTH OF THE NORTHWEST CHAINLINK FENCE CORNER THAT SURROUNDS COMMUNICATION TOWER	737.44	550+90.63/141.8' LT.
BM 13	"BENCH TIE" (YELLOW) SET IN EAST FACE OF POWER POLE 110' +/- SOUTH OF CL OF RAILROAD BRIDGE, 10' +/- WEST OF CL OF TROLLEY TRACKS, 5' +/- NORTHWEST OF TROLLEY POWER POLE #50	700.78	
BM 14	"ALUMINUM DISK" SET IN CONCRETE AT SIDE OF ROUTE 31 ACROSS FROM THE PROPERTY LINE EXTENDED BETWEEN RESIDENCE #7N398 AND #7N416	750.20	116+51.27/33.6' LT.
OSBM 125	SOUTHWEST BOLT TRANSMISSION TOWER SOUTHEAST OF 4 BOLTS ON EAST SIDE OF ROUTE 31 SOUTH OF RAILROAD TRACKS	755.42	110+36.70/76.9' LT.

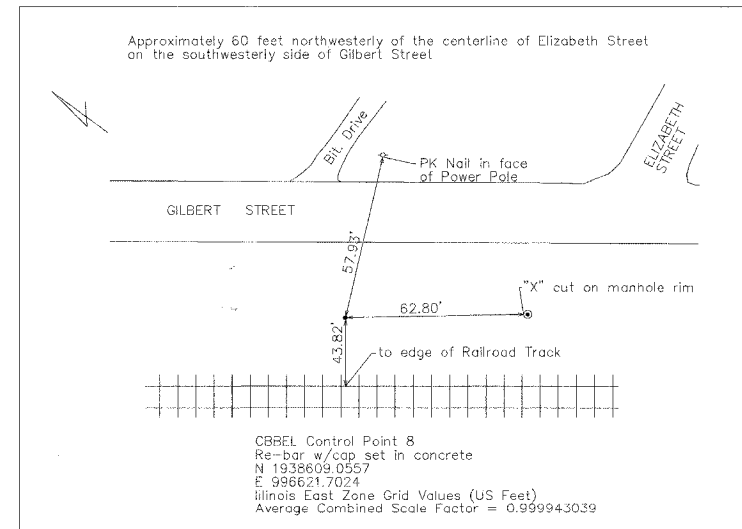
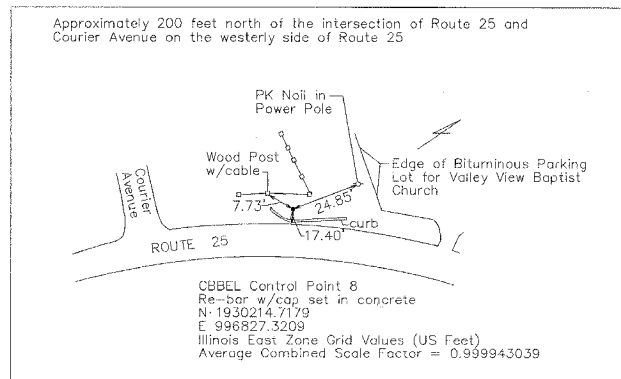
HORIZONTAL CONTROL DATA

STATION	NORTHING	EASTING
ILLINOIS ROUTE 31		
P.O.T. 107+68.31	1935122.4469	994061.3740
P.C. 112+11.80	1934682.2344	994007.5269
P.I. 114+87.40	1934408.6760	993974.0650
P.T. 117+58.16	1934160.0317	993855.1956
P.O.T. 119+44.46	1933991.9569	993774.8440
PROPOSED STERNS ROAD		
P.C. 552+45.94	1934613.6801	993138.6315
P.I. 555+90.82	1934562.1525	993479.6459
P.T. 559+35.18	1934543.5899	993824.0314
P.O.T. 565+00	1934513.1888	994388.0352

Coordinates are "Illinois East Zone" Grid Values (U.S. Feet)  
To obtain ground coordinates, divide by the Average Combined Scale Factor of 0.999943039

PROP. CURVE WEST5  
 PI STA. = 555+90.82  
 I = 5° 30' 25" (LT)  
 D = 0° 47' 56"  
 R = 7,171.00'  
 T = 344.89'  
 L = 689.24'  
 E = 8.29'  
 e = \_\_\_\_\_  
 T.R. = \_\_\_\_\_  
 S.E. RUN = \_\_\_\_\_  
 P.C. STA. = 552+45.94  
 P.T. STA. = 559+35.18

PROP. CURVE IL31\_1  
 PI STA. = 114+87.40  
 I = 18° 34' 38" (RT)  
 D = 3° 24' 01"  
 R = 1,685.07'  
 T = 275.60'  
 L = 546.36'  
 E = 22.39'  
 e = \_\_\_\_\_  
 T.R. = \_\_\_\_\_  
 S.E. RUN = \_\_\_\_\_  
 P.C. STA. = 112+11.80  
 P.T. STA. = 117+58.16



REVISIONS	
NAME	DATE
Road names changed	2/27/07

**URS** 100 SOUTH WACKER DR. STE 500 TEL (312) 939-1000  
 CHICAGO, IL 60606 FAX (312) 939-4198

IL ROUTE 31 BRIDGE OVER NEW STEARNS ROAD

SCALE: DRAWN BY: AMK  
 DATE 4/23/2007 CHECKED BY: DDL