

STATE OF ILLINOIS
DEPARTMENT OF TRANSPORTATION

| ROUTE NO. | SECTION | COUNTY | TOTAL SHEETS | SHEET NO. |
|-----------------------|----------------|-------------------|--------------|-----------|
| F.A.U. 3887 | 06-00214-06-BR | KANE | 55 | 22 |
| FED. ROAD DIST. NO. 7 | ILLINOIS | FED. AID PROJECT- | | |

SHEET NO. 7
25 SHEETS

CONTRACT NO. 83923

**SUPERSTRUCTURE
BILL OF MATERIAL**

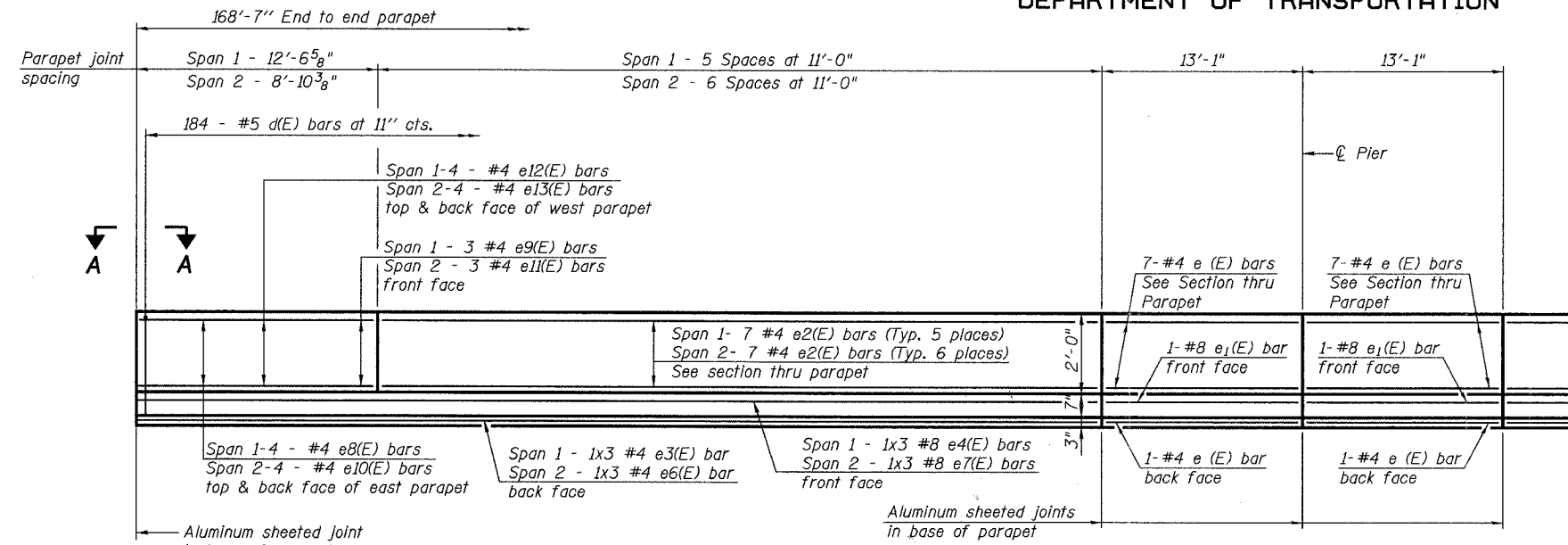
| Bar | No. | Size | Length | Shape |
|----------------------------------|-----|------|----------|--------|
| d(E) | 253 | #5 | 45'-9" | |
| d1(E) | 203 | #5 | 45'-4" | |
| d2(E) | 252 | #6 | 6'-6" | |
| d3(E) | 4 | #5 | 44'-7" | |
| b(E) | 294 | #5 | 29'-9" | |
| b1(E) | 45 | #8 | 33'-10" | |
| b2(E) | 252 | #5 | 25'-6" | |
| d(E) | 368 | #5 | 5'-7" | |
| d1(E) | 368 | #5 | 8'-4" | |
| e(E) | 32 | #4 | 12'-10" | |
| e1(E) | 4 | #8 | 12'-10" | |
| e2(E) | 154 | #4 | 10'-9" | |
| e3(E) | 6 | #4 | 23'-11" | |
| e4(E) | 6 | #8 | 25'-9" | |
| e6(E) | 6 | #4 | 27'-0" | |
| e7(E) | 6 | #8 | 28'-2" | |
| e8(E) | 4 | #4 | 12'-6" | |
| e9(E) | 6 | #4 | 12'-3" | |
| e10(E) | 4 | #4 | 8'-3" | |
| e11(E) | 6 | #4 | 9'-6" | |
| e12(E) | 4 | #4 | 12'-0" | |
| e13(E) | 4 | #4 | 10'-9" | |
| m1(E) | 6 | #6 | 44'-11" | |
| m2(E) | 24 | #6 | 9'-10" | |
| m3(E) | 20 | #6 | 5'-8" | |
| m4(E) | 4 | #6 | 2'-8" | |
| m5(E) | 30 | #4 | 7'-0" | |
| m6(E) | 6 | #8 | 5'-10" | |
| m7(E) | 4 | #6 | 44'-4" | |
| s9(E) | 90 | #5 | 5'-9" | |
| s10(E) | 68 | #4 | 13'-2" | |
| s11(E) | 30 | #4 | 12'-4" | |
| v3(E) | 82 | #5 | 3'-4" | |
| Reinforcement Bars, Epoxy Coated | | | Lbs. | 55,560 |
| Concrete Superstructure | | | Cu. Yds. | 302.8 |
| Bridge Deck Grooving | | | Sq. Yds. | 765 |
| Protective Coat | | | Sq. Yds. | 980 |
| Bar Splicers | | | Each | 86 |

Bars indicated thus: 3x7 #5 etc. indicates 3 lines of #5 bars with 7 lengths per line.

Reinforcement bars designated (E) shall be epoxy coated.

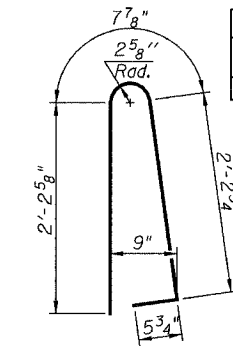
See Sheet 18 of 25 for Architectural Form Liner and Staining Concrete Structures Details and Quantities for parapets and deck overhangs.

Protective coat shall be applied to top and inside faces of parapets and top surface of deck. Protective coat shall be applied to bridge deck after bridge deck grooving operations have been completed.

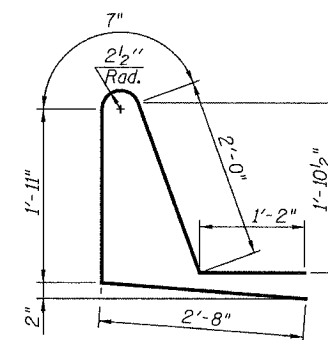


INSIDE ELEVATION OF PARAPET

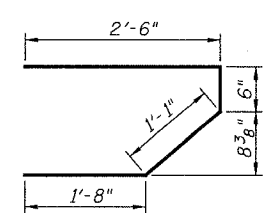
MINIMUM BAR LAP
(Parapet)
#4 bar = 1'-8"
#8 bar = 4'-6"



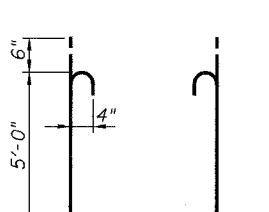
BAR d(E)



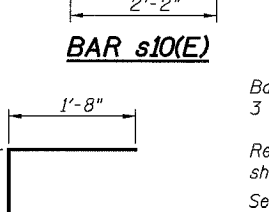
BAR d1(E)



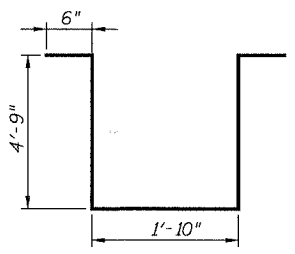
BAR s9(E)



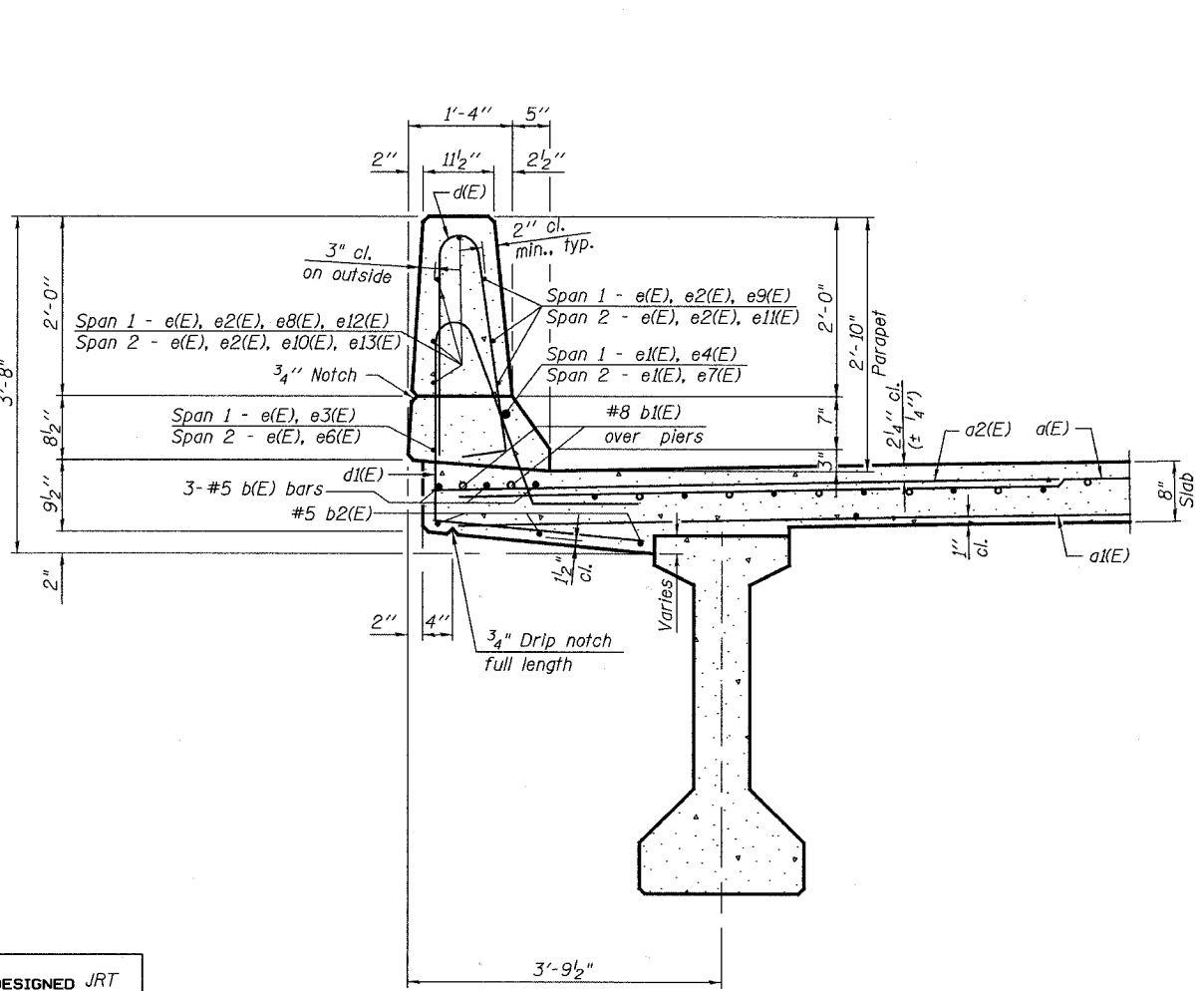
BAR s10(E)



BAR v3(E)

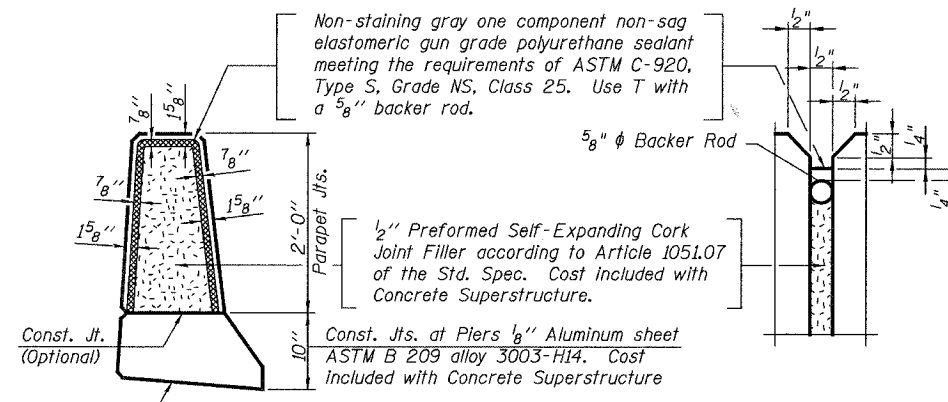


BAR s11(E)

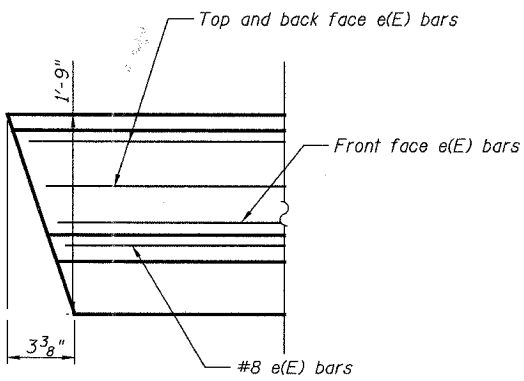


SECTION THRU PARAPET

(Parapet reveals not shown for clarity. See sheet 18 for reveal and finish details.)



PARAPET JOINT DETAILS



SECTION A-A

| | |
|----------|-----|
| DESIGNED | JRT |
| CHECKED | NPP |
| DRAWN | SOI |
| CHECKED | NPP |

PI-I-D 11-1-06

URS
100 South Wacker Drive,
Suite 500
Chicago, IL 60606
(312) 939-1000

| REVISIONS | |
|-----------|------|
| NAME | DATE |
| | |
| | |
| | |
| | |
| | |
| | |
| | |
| | |
| | |
| | |

ILLINOIS DEPARTMENT OF TRANSPORTATION
ILLINOIS ROUTE 31 OVER NEW STEARNS ROAD
KANE COUNTY

SUPERSTRUCTURE DETAILS

F.A.U. 3887
STATION 113+61.11
SCALE:

SECTION 06-00214-06-BR
STRUCTURE NO. 045-2031
DATE: 00/00/2007